

LEA Name : Northern Tioga SD
Address : 110 Ellison Road
Elkland, PA 16920

County : Tioga
AUN Number : 117596003
LEA Type : SD

Annual Financial Report Accuracy Certification Statement

For Fiscal Year Ending
6/30/2019

Pennsylvania Department of Education
&

Office of Comptroller Operations
PDE-2056: Intermediate Unit
PDE-2057: School District, AVTS/CTC, Charter School,
and Special Program Jointure

CERTIFICATION: By signing this page I agree that the electronic data submitted is a complete and accurate statement of the financial operations and status of the local education agency for the fiscal year. It has been prepared in accordance with generally accepted accounting principles and established Commonwealth of PA reporting guidelines.

Kathy S. VanSchaick
Chief School Administrator Signature

11/30/19
Date

Kathy S. VanSchaick
Board Secretary Signature

11/30/19
Date

Kathy S VanSchaick

(814)258-5644 Ext : 1020

Contact Person

Contact Person Telephone Number

kathy.vanschaick@ntiogasd.org

(814)258-7083

Contact Person E-mail Address

Contact Person Fax Number

Audit Certification
Annual Financial Report:
For Fiscal Year Ending 6/30/2019
(Pursuant to PA School Code Section 218(b))

LEA Name : Northern Tioga SD
AUN Number : 117596003
County : Tioga

Audit Certification Due: 12/31/2019
--

This certification is applicable to the Annual Financial Report data submitted through the Consolidated Financial Reporting System on: 11/26/19
Date

Auditing Firm:

CERTIFICATION: By signing this page I agree that the financial statements of the school have been properly audited as noted above pursuant to Article XXIV, and in the auditor's professional opinion, the Annual Financial Report (PDE-2057) submitted on the date referenced is materially consistent with the audited financial statements.

Chief School Administrator

Signature *Kathy S. Vanschaick* Date 11/26/19

Board Secretary

Signature *Kathy Vanschaick* Date 11/26/19

Kathy S Vanschaick

(814)258-5644

Ext : 1020

Contact Person

Contact Person Telephone Number

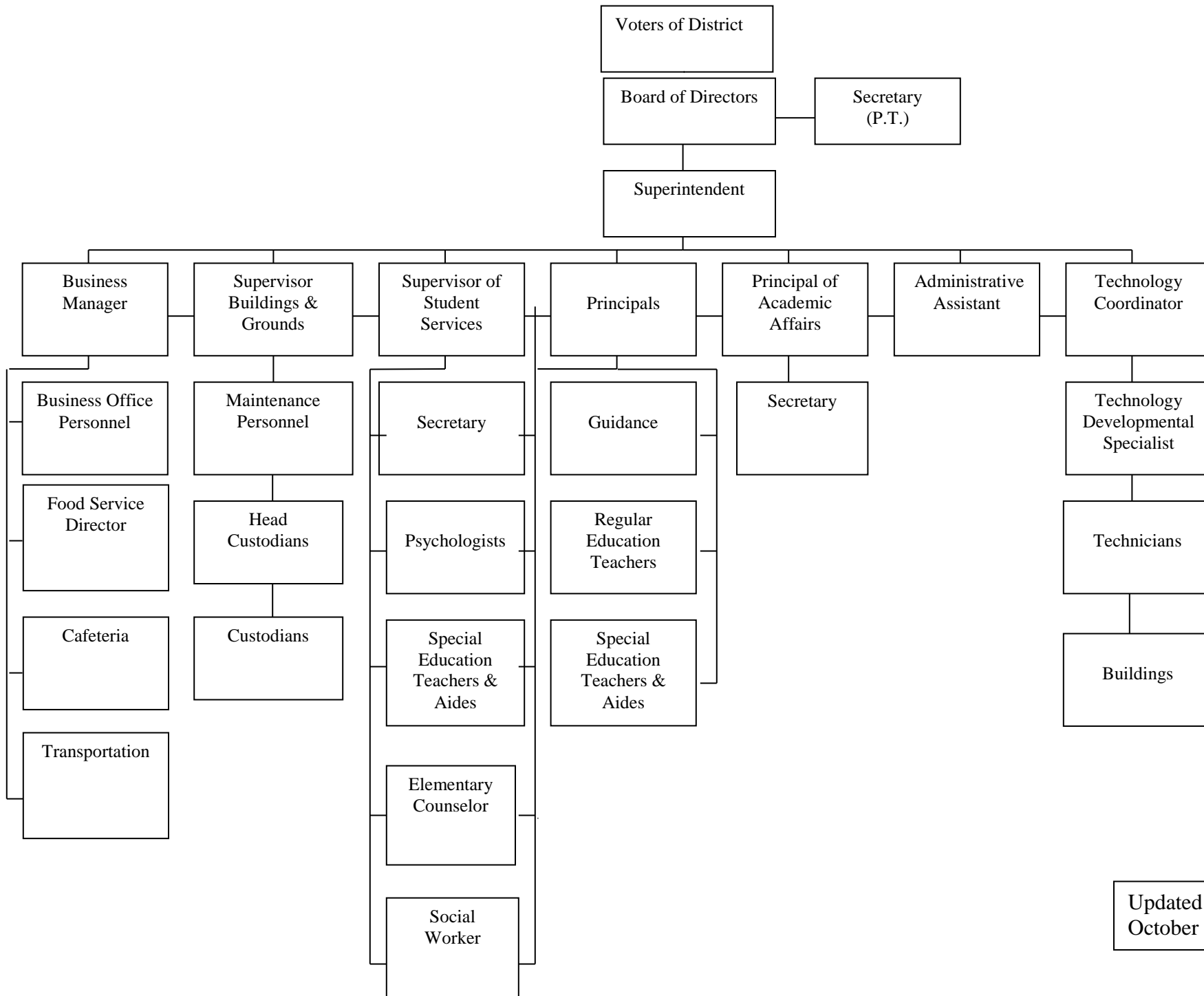
kathy.vanschaick@ntiogasd.org

(814)258-7083

Contact Person E-mail Address

Contact Person Fax Number

NORTHERN TIOGA SCHOOL DISTRICT



Updated
October 2018

<u>Val Number</u>	<u>Description</u>	<u>Justification</u>
10150	<p>NAG: Balance Sheet Govt Funds:Data has been entered for Fund 32, Line 0400 - Due to Other Funds. Since transfers out of Fund 32 are not allowed, this line should only be utilized when recording transactions related to interfund reimbursements. Please make corrections or provide brief details of the interfund reimbursement.</p> <p>NAG Fund 32, Line 0400: \$390,453.00</p>	<p>This is an interfund reimbursement. Capital Reserve expenditures are paid with General Fund check and then funds are transferred to reimburse general fund.</p>
13092	<p>REG: A large amount has been reported as local revenue in Fund 32, account 6000 which should only include interest earnings of this fund. Correct or provide a brief explanation of the revenue reported.</p> <p>REG, Fund 32, Local Revenue Line 6000: \$190,506.00</p>	<p>This this interest earnings</p>
41162	<p>Expenditure Detail, Salaries (Object 100) and Benefits (Object 200 series): Amounts must be entered for both Salaries and Benefits.</p> <p>Please verify following fund and function codes: Fund 10 Function 2310;</p>	<p>This is a retirement contribution for health insurance for retired board secretary</p>
50450	<p>SESS - 2350 Legal and Accounting Services: SESS Schedule amounts for Special Education vary from prior year by 40% or more. Correct the data or enter a justification.</p> <p>SESS Schedule 2350: \$7,728.54 Prior Year SESS Schedule 2350: \$4,215.65</p>	<p>Amounts from both years are correct. Legal costs were higher</p>

Amounts Expressed in Whole Dollars	<u>General Fund</u> <u>(10)</u>	<u>Public Purpose Trust</u> <u>(27)</u>	<u>Other Compt Approved</u> <u>(28)</u>	<u>Athletic / Activity</u> <u>(29)</u>	<u>Capital Reserve (690.</u> <u>1850)</u> <u>(31)</u>
Assets And Deferred Outflows Of Resources					
Assets					
0100 Cash and Cash Equivalents	10,918,892				
0110 Investments	1,542,401				
0120 Taxes Receivable	1,127,368				
0130 Due From Other Funds	523,381				
0141 Due From Other Governments					
0142 State Revenue Receivable	1,448,351				
0143 Federal Revenue Receivable	464,075				
0145 Other Intergovernmental Revenue Receivable					
0146 Due from Primary Government					
0147 Due from Component Unit					
0150 Other Receivables	38,960				
0170 Inventories					
0180 Prepaid Expenses (Expenditures)					
0190 Other Current Assets					
Total Assets	\$16,063,428				
0910 Deferred Outflows of Resources					
Total Assets And Deferred Outflows Of Resources	\$16,063,428				

Amounts Expressed in Whole Dollars

	<u>Capital Reserve (1431)</u> <u>(32)</u>	<u>Other Capital Projects</u> <u>Fund</u> <u>(39)</u>	<u>Debt Service</u> <u>(40)</u>	<u>Permanent</u> <u>(90)</u>	<u>Total Governmental</u> <u>Funds</u>
Assets And Deferred Outflows Of Resources					
Assets					
0100 Cash and Cash Equivalents	1,429,049	861,968			13,209,909
0110 Investments	5,211,456	7,934,737			14,688,594
0120 Taxes Receivable					1,127,368
0130 Due From Other Funds					523,381
0141 Due From Other Governments					
0142 State Revenue Receivable					1,448,351
0143 Federal Revenue Receivable					464,075
0145 Other Intergovernmental Revenue Receivable					
0146 Due from Primary Government					
0147 Due from Component Unit					
0150 Other Receivables					38,960
0170 Inventories					
0180 Prepaid Expenses (Expenditures)					
0190 Other Current Assets					
Total Assets	\$6,640,505	\$8,796,705			\$31,500,638
0910 Deferred Outflows of Resources					
Total Assets And Deferred Outflows Of Resources	\$6,640,505	\$8,796,705			\$31,500,638

Amounts Expressed in Whole Dollars

	<u>General Fund</u> <u>(10)</u>	<u>Public Purpose Trust</u> <u>(27)</u>	<u>Other Compt Approved</u> <u>(28)</u>	<u>Athletic / Activity</u> <u>(29)</u>	<u>Capital Reserve (690.</u> <u>1850)</u> <u>(31)</u>
Liabilities And Deferred Inflows Of Resources And Fund Balances					
Liabilities					
0400 Due to Other Funds					
0411 Due to Other Governments					
0412 Due to Primary Government					
0413 Due to Component Unit					
0420 Accounts Payable	293,644				
0430 Contracts Payable					
0440 Current Portion of Long-Term Debt	275,594				
0450 Short-Term Payables					
0461 Accrued Salaries and Benefits	3,136,523				
0462 Payroll Deductions and Withholding	1,388,670				
0480 Unearned Revenues					
0490 Other Current Liabilities					
Total Liabilities	\$5,094,431				
0950 Deferred Inflows of Resources	1,017,221				
Fund Balances					
0810 Nonspendable Fund Balance					
0820 Restricted Fund Balance					
0830 Committed Fund Balance					
0840 Assigned Fund Balance	6,632,505				
0850 Unassigned Fund Balance	3,319,271				
Total Fund Balances	\$9,951,776				
Total Liabilities, Deferred Inflows Of Resources And Fund Balances	\$16,063,428				

Amounts Expressed in Whole Dollars

	<u>Capital Reserve (1431)</u> <u>(32)</u>	<u>Other Capital Projects</u> <u>Fund</u> <u>(39)</u>	<u>Debt Service</u> <u>(40)</u>	<u>Permanent</u> <u>(90)</u>	<u>Total Governmental</u> <u>Funds</u>
Liabilities And Deferred Inflows Of Resources And Fund Balances					
Liabilities					
0400 Due to Other Funds	390,453				390,453
0411 Due to Other Governments					
0412 Due to Primary Government					
0413 Due to Component Unit					
0420 Accounts Payable		1,571,699			1,865,343
0430 Contracts Payable					
0440 Current Portion of Long-Term Debt					275,594
0450 Short-Term Payables					
0461 Accrued Salaries and Benefits					3,136,523
0462 Payroll Deductions and Withholding					1,388,670
0480 Unearned Revenues					
0490 Other Current Liabilities					
Total Liabilities	\$390,453	\$1,571,699			\$7,056,583
0950 Deferred Inflows of Resources					1,017,221
Fund Balances					
0810 Nonspendable Fund Balance					
0820 Restricted Fund Balance		7,225,006			7,225,006
0830 Committed Fund Balance					
0840 Assigned Fund Balance	6,250,052				12,882,557
0850 Unassigned Fund Balance					3,319,271
Total Fund Balances	\$6,250,052	\$7,225,006			\$23,426,834
Total Liabilities, Deferred Inflows Of Resources And Fund Balances	\$6,640,505	\$8,796,705			\$31,500,638

Amounts Expressed in Whole Dollars	<u>General Fund</u> <u>(10)</u>	<u>Public Purpose Trust</u> <u>(27)</u>	<u>Other Compt Approved</u> <u>(28)</u>	<u>Athletic / Activity</u> <u>(29)</u>	<u>Capital Reserve (690.</u> <u>1850)</u> <u>(31)</u>
Revenues					
6000 Revenue from Local Sources	12,422,404				
7000 Revenue from State Sources	20,718,021				
8000 Revenue from Federal Sources	934,435				
Total Revenues	\$34,074,860				
Expenditures					
1000 Instruction	20,911,742				
2000 Support Services	9,510,492				
3000 Operation of Non-Instructional Services	688,598				
4000 Facilities Acquisition, Construction and Improvement Services	42,113				
5110 Debt Service	1,563,790				
5130 Refund of Prior Year Revenues / Receipts	23,606				
Total Expenditures	\$32,740,341				
Excess (Deficiency) Of Revenues Over Expenditures	\$1,334,519				
Other Financing Sources (Uses)					
9110 Face Value of Bonds Issued					
9120 Proceeds from Refunding of Bonds					
9130 Bond Premiums					
9200 Proceeds from Extended-Term Financing					
9300 Interfund Transfers - IN	24,000				
9400 Sale of or Compensation for Loss of Fixed Assets					
9710 Transfers from Component Units					
9720 Transfers from Primary Governments					
9910 Other Financing Sources Not Listed in the 9000 Series					
9990 Insurance Recoveries					
5120 Debt Service – Refunded Bonds					
5150 Bond Discounts					
5200 Interfund Transfers – Out	528,079				
5300 Transfers Out to Component Units/Primary Governments					
Total Other Financing Sources (Uses)	(\$504,079)				

Amounts Expressed in Whole Dollars	<u>Capital Reserve (1431)</u> <u>(32)</u>	<u>Other Capital Projects</u> <u>Fund</u> <u>(39)</u>	<u>Debt Service</u> <u>(40)</u>	<u>Permanent</u> <u>(90)</u>	<u>Total Governmental</u> <u>Funds</u>
Revenues					
6000 Revenue from Local Sources	190,506	387,208			13,000,118
7000 Revenue from State Sources					20,718,021
8000 Revenue from Federal Sources					934,435
Total Revenues	\$190,506	\$387,208			\$34,652,574
Expenditures					
1000 Instruction					20,911,742
2000 Support Services	5,998	12,391			9,528,881
3000 Operation of Non-Instructional Services					688,598
4000 Facilities Acquisition, Construction and Improvement Services	11,967	11,804,102			11,858,182
5110 Debt Service	186,000				1,749,790
5130 Refund of Prior Year Revenues / Receipts					23,606
Total Expenditures	\$203,965	\$11,816,493			\$44,760,799
Excess (Deficiency) Of Revenues Over Expenditures	(\$13,459)	(\$11,429,285)			(\$10,108,225)
Other Financing Sources (Uses)					
9110 Face Value of Bonds Issued					
9120 Proceeds from Refunding of Bonds					
9130 Bond Premiums					
9200 Proceeds from Extended-Term Financing					
9300 Interfund Transfers - IN	500,000				524,000
9400 Sale of or Compensation for Loss of Fixed Assets					
9710 Transfers from Component Units					
9720 Transfers from Primary Governments					
9910 Other Financing Sources Not Listed in the 9000 Series					
9990 Insurance Recoveries					
5120 Debt Service – Refunded Bonds					
5150 Bond Discounts					
5200 Interfund Transfers – Out					528,079
5300 Transfers Out to Component Units/Primary Governments					
Total Other Financing Sources (Uses)	\$500,000				(\$4,079)

Amounts Expressed in Whole Dollars	<u>General Fund</u> <u>(10)</u>	<u>Public Purpose Trust</u> <u>(27)</u>	<u>Other Compt Approved</u> <u>(28)</u>	<u>Athletic / Activity</u> <u>(29)</u>	<u>Capital Reserve</u> <u>(690.</u> <u>1850)</u> <u>(31)</u>
Special And Extraordinary Items					
9920 Special Items – Gains					
9930 Extraordinary Items – Gains					
5520 Special Items – Losses					
5530 Extraordinary Items – Losses					
Net Change In Fund Balances	\$830,440				
Fund Balance					
0001 Fund Balance - Beginning of Fiscal Year	9,121,336				
Fund Balance - End Of Year	\$9,951,776				

Amounts Expressed in Whole Dollars	<u>Capital Reserve (1431)</u> <u>(32)</u>	<u>Other Capital Projects</u> <u>Fund</u> <u>(39)</u>	<u>Debt Service</u> <u>(40)</u>	<u>Permanent</u> <u>(90)</u>	<u>Total Governmental</u> <u>Funds</u>
Special And Extraordinary Items					
9920 Special Items – Gains					
9930 Extraordinary Items – Gains					
5520 Special Items – Losses					
5530 Extraordinary Items – Losses					
Net Change In Fund Balances	\$486,541	(\$11,429,285)			(\$10,112,304)
Fund Balance					
0001 Fund Balance - Beginning of Fiscal Year	5,763,511	18,654,291			33,539,138
Fund Balance - End Of Year	\$6,250,052	\$7,225,006			\$23,426,834

Amounts Expressed in Whole Dollars	<u>Food Service</u> <u>(51)</u>	<u>Child Care</u> <u>Operations</u> <u>(52)</u>	<u>Other Enterprise</u> <u>(58)</u>	<u>TOTAL</u>	<u>Internal Service</u> <u>(60)</u>
Assets And Deferred Outflows Of Resources					
Current Assets					
0100 Cash and Cash Equivalents	188,801			188,801	
0110 Investments					
0130 Due From Other Funds					
0141 Due From Other Governments					
0142 State Revenue Receivable	6,681			6,681	
0143 Federal Revenue Receivable	122,819			122,819	
0146 Due from Primary Government					
0147 Due from Component Unit					
0150 Other Receivables	376			376	
0170 Inventories	33,159			33,159	
0180 Prepaid Expenses (Expenditures)					
0190 Other Current Assets					
Total Current Assets	\$351,836			\$351,836	
Noncurrent Assets					
0211 Land					
0212 Site Improvements (Net)					
0220 Buildings and Building Improvements (Net)					
0230 Machinery, Equipment and Furniture (Net)	241,707			241,707	
0250 Construction in Progress					
0260 Long Term Prepayments					
0290 Other Noncurrent Assets					
Total Noncurrent Assets	\$241,707			\$241,707	
0910 Deferred Outflows of Resources					
Total Assets And Deferred Outflows Of Resources	\$593,543			\$593,543	

Amounts Expressed in Whole Dollars	<u>Food Service</u> <u>(51)</u>	<u>Child Care</u> <u>Operations</u> <u>(52)</u>	<u>Other Enterprise</u> <u>(58)</u>	<u>TOTAL</u>	<u>Internal Service</u> <u>(60)</u>
Liabilities And Deferred Inflows Of Resources And Net Position					
Current Liabilities					
0400 Due to Other Funds	132,928			132,928	
0411 Due to Other Governments					
0413 Due to Component Unit					
0420 Accounts Payable	253			253	
0430 Contracts Payable					
0440 Current Portion of Long-Term Debt	6,512			6,512	
0450 Short-Term Payables					
0461 Accrued Salaries and Benefits	11,297			11,297	
0462 Payroll Deductions and Withholding					
0480 Unearned Revenues	12,989			12,989	
0490 Other Current Liabilities					
Total Current Liabilities	\$163,979			\$163,979	
Noncurrent Liabilities					
0510 Bonds Payable					
0520 Extended-Term Financing Agreements Payable					
0530 Lease-Purchase Obligations					
0540 Accumulated Compensated Absences					
0550 Authority Lease Obligations					
0560 Other Post-Employment Benefits (OPEB)					
0570 Net Pension Liability					
0599 Other Noncurrent Liabilities					
Total Noncurrent Liabilities					
Total Liabilities	\$163,979			\$163,979	
0950 Deferred Inflows of Resources					
Net Position					
0791 Net Investment in Capital Assets	241,707			241,707	
0008 Restricted Net Position (0792 – 0798)					
0799 Unrestricted Net Position	187,857			187,857	
Total Net Position	\$429,564			\$429,564	
Total Liabilities And Deferred Inflows Of Resources And Net Position	\$593,543			\$593,543	

Amounts Expressed in Whole Dollars	<u>Food Service</u> <u>(51)</u>	<u>Child Care Operations</u> <u>(52)</u>	<u>Other Enterprise</u> <u>(58)</u>	<u>TOTAL</u>	<u>Internal Service</u> <u>(60)</u>
Operating Revenues					
6600 Food Service Revenue	406,231			406,231	
0071 Charges for Services					
0072 Other Operating Revenue					
Total Operating Revenues	\$406,231			\$406,231	
Operating Expenses					
100 Personnel Services – Salaries	496,192			496,192	
200 Personnel Services – Employee Benefits	419,809			419,809	
300 Purchased Professional and Technical Services	2,832			2,832	
400 Purchased Property Services	9,829			9,829	
500 Other Purchased Services	5,345			5,345	
600 Supplies	630,276			630,276	
740 Depreciation	17,764			17,764	
810 Dues and Fees					
890 Miscellaneous Expenditures					
Total Operating Expenses	\$1,582,047			\$1,582,047	
Operating Income (Loss)	(\$1,175,816)			(\$1,175,816)	
Non Operating Revenues (Expenses)					
6500 Earnings on Investments	2,401			2,401	
6920 Contributions and Donations from Private Sources	930			930	
6930 Gains or Losses on Sale of Fixed Assets					
6991 Refunds of a Prior Year Expenditure					
7000 Revenue from State Sources	184,243			184,243	
8000 Revenue from Federal Sources	993,132			993,132	
9990 Insurance Recoveries					
820 Claims and Judgments Against the LEA					
830 Interest					
TOTAL Non Operating Revenues (Expenses)	\$1,180,706			\$1,180,706	
Income (Loss) Before Contributions And Transfers	\$4,890			\$4,890	

Amounts Expressed in Whole Dollars	<u>Food Service</u> <u>(51)</u>	<u>Child Care Operations</u> <u>(52)</u>	<u>Other Enterprise</u> <u>(58)</u>	<u>TOTAL</u>	<u>Internal Service</u> <u>(60)</u>
Contributions, Transfers, and Special and Extraordinary Items					
5200 Interfund Transfers – Out					
5300 Transfers Out to Component Units/Primary Governments					
5520 Special Items – Losses					
5530 Extraordinary Items – Losses					
9300 Interfund Transfers - IN	4,079			4,079	
9500 Capital Contributions					
9700 Transfers IN From Component Units/Primary Governments					
9920 Special Items – Gains					
9930 Extraordinary Items – Gains					
Change In Net Position	\$8,969			\$8,969	
0002 Net Position - Beginning of Fiscal Year	420,595			420,595	
0003 Accounting Changes / Residual Equity Transfers					
Net Position - End Of Year	\$429,564			\$429,564	

Amounts Expressed in Whole Dollars	<u>Food Service</u> <u>(51)</u>	<u>Child Care Operations</u> <u>(52)</u>	<u>Other Enterprise</u> <u>(58)</u>	<u>TOTAL</u>	<u>Internal Service(60)</u>
Cash Flows From Operating Activities					
0011 Cash Receipts From Users	406,594			406,594	
0012 Cash Receipts From Assessments Made to Other Funds					
0013 Cash Receipts From Earnings on Investments					
0014 Cash Receipts From Other Operating Revenue					
0015 Cash Payments To Employees For Services	901,843			901,843	
0016 Cash Payments For Insurance Claims					
0017 Cash Payments To Suppliers For Goods and Services	545,687			545,687	
0018 Cash Payments For Other Operating Expenses					
Net Cash Provided By (Used For) Operating Activities	(\$1,040,936)			(\$1,040,936)	
Cash Flows From Non-Capital Financing Activities					
0021 Receipts From Local Sources - 6000	930			930	
0022 Receipts From State Sources - 7000	183,491			183,491	
0023 Receipts From Federal Sources -8000	879,079			879,079	
0024 Notes and Loans Received (Repaid)					
0025 Interest Paid on Notes/Loans - 5100-830					
0026 Operating Transfers In (Out)/Residual Equity Trans					
0027 Operating Transfers In (Out) Primary Government / Comp Unit	4,079			4,079	
0028 Receipts From Refund of Prior Year Expenditures - 6991					
0029 Special and Extraordinary Gains (losses)					
0030 Receipts from Insurance Recoveries -9990					
Net Cash Prov By (Used for) Non-Capital Financing Activities	\$1,067,579			\$1,067,579	
Cash Flows From Capital and Related Financing Activities					
0031 Payments For Fac Acq, Const, and Imp - 4000	(4,500)			(4,500)	
0032 Gain / (Loss) on Sale of Fixed Assets - 6930					
0033 Proceeds From Extended Term Financing - 9200					
0034 Principal Paid on Financing Agreements					
0035 Interest Paid on Financing Agreements - 5100-830					
0036 (Inc) Dec in Contributed Capital					
Net Cash Prov By (Used for) Capital and Related Financing Activities	(\$4,500)			(\$4,500)	
Cash Flows From Investing Activities					
0041 Earnings on Investments - 6500	2,401			2,401	
0042 Purchase of Inv Securities / Deposits to Inv Pools					
0043 Receipts From Investment Pool Withdrawals					
0044 Proceeds from Sale and Maturity of Inv Securities					

LEA : 117596003 Northern Tioga SD

Printed 2/3/2020 3:04:19 PM

0045 Loans Received (Paid)

Net Cash Prov By (Used for) Investing Activities	\$2,401	\$2,401
---	----------------	----------------

LEA : 117596003 Northern Tioga SD

Printed 2/3/2020 3:04:19 PM

	<u>Food Service</u> <u>(51)</u>	<u>Child Care Operations</u> <u>(52)</u>	<u>Other Enterprise</u> <u>(58)</u>	<u>TOTAL</u>	<u>Internal Service</u> <u>(60)</u>
Net Increase (Decrease) in Cash Flows	24,544			24,544	
0004 Cash and Cash Equivalents Beginning of Year	164,257			164,257	
Cash and Cash Equivalents at Year End	\$188,801			\$188,801	

Reconciliation of Operating Income (Loss) To Net Cash Provided by (Used For) Operating Activities

0005 Operating Income (Loss) per REP	(1,175,816)			(1,175,816)	
Adjustments					
0051 Depreciation and Net Amortization	17,764			17,764	
0052 Provision for Uncollectible Accounts					
0053 Other Adjustments	98,377			98,377	
Effect of Changes in Assets, Liabilities, Deferred Outflows and Deferred Inflows					
0054 (Inc) Dec In Accounts Receivable (0120-0150)	(376)			(376)	
0055 Advances to Other Funds (0160)	6,796			6,796	
0056 (Inc) Dec in Inventories (0170)	3,965			3,965	
0057 (Inc) Dec in Prepaid Expenses (0180)					
0058 (Inc) Dec in Other Current or Noncurrent Assets					
0064 Deferred Outflows (0910)					
0059 Inc (Dec) in Accounts Payable (0400-0450)	6,765			6,765	
0060 Inc (Dec) in Accrued Salaries/Benefits (0461)	850			850	
0065 Inc (Dec) in Net Pension Liabilities (0570)					
0066 Inc (Dec) in Other Postemp Benefit Oblig (0560)					
0061 Inc (Dec) in Payroll Deductions/Withholding (0462)					
0062 Inc (Dec) in Unearned Revenue (0480)	739			739	
0063 Inc (Dec) in Other Current or Noncurrent Liabilities					
0067 Deferred Inflows (0950)					
Total Adjustments	\$134,880			\$134,880	
Cash Provided By (Used for) Total	(\$1,040,936)			(\$1,040,936)	

COMBINED STATEMENT OF CASH FLOWS
SCHEDULE OF NONCASH INVESTING, CAPITAL, AND FINANCING ACTIVITIES

Explanation of Transaction and Balance Sheet Effect	Amount
Total	

LEA : 117596003 Northern Tioga SD

Printed 2/3/2020 3:04:23 PM

Amounts Expressed in Whole Dollars

	<u>Private Purpose Trust</u> (71)	<u>Investment Trust</u> (72)	<u>Pension Trust</u> (73)	<u>Activity</u> (81)
Assets And Deferred Outflows Of Resources				
Assets				
0100 Cash and Cash Equivalents	52,823			222,937
0110 Investments	130,715			
0130 Due From Other Funds				
0147 Due from Component Unit				
0150 Other Receivables				
0170 Inventories				
0180 Prepaid Expenses (Expenditures)				
0190 Other Current Assets				
0220 Buildings and Building Improvements (Net)				
0230 Machinery, Equipment and Furniture (Net)				
Total Assets	\$183,538			\$222,937
0910 Deferred Outflows of Resources				
Total Assets And Deferred Outflows Of Resources	\$183,538			\$222,937

LEA : 117596003 Northern Tioga SD

Printed 2/3/2020 3:04:23 PM

Amounts Expressed in Whole Dollars	<u>Other Agency</u> <u>(89)</u>	<u>Discrete Component Units</u> <u>(98)</u>	<u>Discrete Component Units</u> <u>(99)</u>	<u>Total Fiduciary Funds</u>
Assets And Deferred Outflows Of Resources				
Assets				
0100 Cash and Cash Equivalents	517,934			793,694
0110 Investments	679,759			810,474
0130 Due From Other Funds				
0147 Due from Component Unit				
0150 Other Receivables				
0170 Inventories				
0180 Prepaid Expenses (Expenditures)				
0190 Other Current Assets				
0220 Buildings and Building Improvements (Net)				
0230 Machinery, Equipment and Furniture (Net)				
Total Assets	\$1,197,693			\$1,604,168
0910 Deferred Outflows of Resources				
Total Assets And Deferred Outflows Of Resources	\$1,197,693			\$1,604,168

LEA : 117596003 Northern Tioga SD

Printed 2/3/2020 3:04:23 PM

Amounts Expressed in Whole Dollars	<u>Private Purpose Trust</u> (71)	<u>Investment Trust</u> (72)	<u>Pension Trust</u> (73)	<u>Activity</u> (81)
Liabilities, Deferred Inflows Of Resources And Net Position				
Liabilities				
0400 Due to Other Funds				
0411 Due to Other Governments				
0412 Due to Primary Government				
0413 Due to Component Unit				
0420 Accounts Payable				
0430 Contracts Payable				
0450 Short-Term Payables				
0461 Accrued Salaries and Benefits				
0462 Payroll Deductions and Withholding				
0480 Unearned Revenues				
0490 Other Current Liabilities				222,937
Total Liabilities				\$222,937
0950 Deferred Inflows of Resources				
Net Position				
0791 Net Investment in Capital Assets				
0009 Restricted Net Position (0792 – 0798)	183,538			
0799 Unrestricted Net Position				
Total Net Position	\$183,538			
Total Liabilities, Deferred Inflows Of Resources And Net Position	\$183,538			\$222,937

LEA : 117596003 Northern Tioga SD

Printed 2/3/2020 3:04:23 PM

Amounts Expressed in Whole Dollars	<u>Other Agency</u> <u>(89)</u>	<u>Discrete Component Units</u> <u>(98)</u>	<u>Discrete Component Units</u> <u>(99)</u>	<u>Total Fiduciary Funds</u>
Liabilities, Deferred Inflows Of Resources And Net Position				
Liabilities				
0400 Due to Other Funds				
0411 Due to Other Governments				
0412 Due to Primary Government				
0413 Due to Component Unit				
0420 Accounts Payable		16,267		16,267
0430 Contracts Payable				
0450 Short-Term Payables				
0461 Accrued Salaries and Benefits				
0462 Payroll Deductions and Withholding				
0480 Unearned Revenues				
0490 Other Current Liabilities		1,181,426		1,404,363
Total Liabilities		\$1,197,693		\$1,420,630
0950 Deferred Inflows of Resources				
Net Position				
0791 Net Investment in Capital Assets				
0009 Restricted Net Position (0792 – 0798)				183,538
0799 Unrestricted Net Position				
Total Net Position				\$183,538
Total Liabilities, Deferred Inflows Of Resources And Net Position		\$1,197,693		\$1,604,168

Amounts Expressed in Whole Dollars	<u>Private Purpose Trust</u> <u>(71)</u>	<u>Investment Trust</u> <u>(72)</u>	<u>Pension Trust</u> <u>(73)</u>	<u>Discrete Component</u> <u>Units</u> <u>(98)</u>	<u>Discrete Component</u> <u>Units</u> <u>(99)</u>	<u>Total Fiduciary</u> <u>Funds</u>
Additions						
0091 Gifts and Contributions	14,647					14,647
0092 Other Additions	1,155					1,155
Deductions						
0093 Scholarships Awarded	12,605					12,605
0094 Other Deductions	96					96
Change In Net Position	\$3,101					\$3,101
0006 Net Position – Beginning of Fiscal Year	180,437					180,437
0007 Net Position Held in Trust for Pension Benefits						
Net Position - End of Fiscal Year	\$183,538					\$183,538

	<u>Revenue Reported In Current Year</u>	<u>Current Year Tax Accrual</u>	<u>Prior Year Tax Accrual</u>	<u>Taxes Collected In Current Year</u>
<u>Revenue from Local Sources</u>				
6111 Current Real Estate Taxes	8,011,288.54			8,011,288.54
6112 Interim Real Estate Taxes	37,317.64			37,317.64
6113 Public Utility Realty Taxes	11,094.83			11,094.83
6114 Payments in Lieu of Current Taxes - State / Local	36,956.95			36,956.95
6143 Current Act 511 Local Services Taxes	21,685.19			21,685.19
6151 Current Act 511 Earned Income Taxes	2,375,242.33			2,375,242.33
6153 Current Act 511 Real Estate Transfer Taxes	147,865.46			147,865.46
6411 Delinquent Real Estate Taxes	1,014,122.35			1,014,122.35
6500 Earnings on Investments	230,907.04			
6832 Federal IDEA Revenue Received as Pass Through	412,875.00			
6910 Rentals	22,139.98			
6920 Contributions and Donations from Private Sources	62,199.40			
6942 Summer School Tuition	360.00			
6949 Other Tuition from Patrons	3,850.00			
6991 Refunds of a Prior Year Expenditure	141.19			
6999 Other Revenues Not Specified Above	34,358.41			
TOTAL Revenue from Local Sources	\$12,422,404.31			\$11,655,573.29

**Revenue Reported
In Current Year**

Revenue from State Sources

7110 Basic Education Funding	12,567,744.10			
7160 Tuition for Orphans Subsidy	9,714.21			
7220 Vocational Education	70,949.88			
7240 Driver Education - Student	3,185.00			
7271 Special Education funds for School-Aged Pupils	1,683,500.54			
7311 Pupil Transportation Subsidy	1,530,783.95			
7312 Nonpublic and Charter School Pupil Transportation Subsidy	13,475.00			
7330 Health Services (Medical, Dental, Nurse, Act 25)	39,188.31			
7340 State Property Tax Reduction Allocation	477,970.61			
7361 School Safety and Security Grants	25,000.00			
7505 Ready to Learn Block Grant	446,252.00			
7509 Supplemental Equipment Grants	5,887.52			
7810 State Share of Social Security and Medicare Taxes	685,241.12			
7820 State Share of Retirement Contributions	3,159,128.30			
TOTAL Revenue from State Sources	\$20,718,020.54			

**Revenue Reported
In Current Year**

Revenue from Federal Sources

8514 NCLB, Title I - Improving the Academic Achievement of the Disadvantaged	609,130.10			
8515 NCLB, Title II - Preparing, Training and Recruiting High Quality Teachers and Principals	78,496.60			
8517 NCLB, Title IV - 21st Century Schools	39,934.60			
8519 NCLB, Title VI - Flexibility and Accountability	0.44			
8521 Vocational Education - Operating Expenditures	23,556.50			
8810 School-Based Access Medicaid Reimbursement Program (SBAP) Reimbursements (Access)	170,337.66			
8820 Medical Assistance Reimbursement for Administrative Claiming (Quarterly) Program	12,979.43			
TOTAL Revenue from Federal Sources	\$934,435.33			

Revenue Reported
In Current Year

Other Financing Sources

9380 Activity Fund Transfers	24,000.00		
TOTAL Other Financing Sources	\$24,000.00		
TOTAL FROM ALL SOURCES	\$34,098,860.18		\$11,655,573.29

Revenue from Local Sources	12,422,404.31
Revenue from State Sources	20,718,020.54
Revenue from Federal Sources	934,435.33
Other Financing Sources	24,000.00
TOTAL FROM ALL SOURCES	\$34,098,860.18

General Fund (10)

	<u>Total</u>
1000 Instruction	
100 Personnel Services – Salaries	
100 Personnel Services – Salaries	11,215,593.21
Total Personnel Services – Salaries	\$11,215,593.21
200 Personnel Services – Employee Benefits	
210 Group Insurance – Contracted Provider	3,352,875.80
220 Social Security Contributions	819,942.70
230 PSERS Retirement Contributions	3,749,667.06
250 Unemployment Compensation	4,086.48
260 Workers’ Compensation	58,409.51
291 Other Retirement Plans	13,837.00
299 All Other Employee Benefits	22,704.00
Total Personnel Services – Employee Benefits	\$8,021,522.55
300 Purchased Professional and Technical Services	
322 Professional Educational Services – Ius	164,736.03
329 Professional Educational Services – Other	53,651.81
330 Other Professional Services	69,545.94
Total Purchased Professional and Technical Services	\$287,933.78
400 Purchased Property Services	
430 Repairs and Maintenance Services	7,732.45
440 Rentals	73,535.62
Total Purchased Property Services	\$81,268.07
500 Other Purchased Services	
510 Student Transportation Services	13,751.65
530 Communications	27,555.51
550 Printing and Binding	3,978.01
561 Tuition To Other School Districts Within the State	42,883.62
562 Tuition To Pennsylvania Charter Schools	513,868.33
567 Tuition To Approved Private Schools (APS) and PA Chartered Schools for the Deaf and Blind	14,316.47
568 Tuition To Private Residential Rehabilitative Institutions (PRRI) [In-State] and Detention Centers	12,125.07
569 Tuition – Other	215,250.14
580 Travel	5,420.58
Total Other Purchased Services	\$849,149.38
600 Supplies	
610 General Supplies	199,133.61
630 Food	1,425.95
640 Books and Periodicals	94,881.19
650 Supplies & Fees – Technology Related	73,115.91
Total Supplies	\$368,556.66
700 Property	
752 Capital Equipment – Original and Additional	8,225.26
756 Capitalized Technology Equipment – Original	25,692.87
758 Capitalized Technology Software - Original	4,750.00
762 Capitalized Equipment - Replacement	3,300.00

General Fund (10)

1000 Instruction	<u>Total</u>
700 <u>Property</u>	
766 Capitalized Technology Equipment – Replacement	43,816.39
Total Property	\$85,784.52
800 <u>Other Objects</u>	
810 Dues and Fees	1,934.25
Total Other Objects	\$1,934.25
Total 1000 Instruction	\$20,911,742.42

General Fund (10)

1100 Regular Programs – Elementary / Secondary	<u>Elementary</u>	<u>Secondary</u>	<u>Federal</u>	<u>Total</u>
100 Personnel Services – Salaries				
100 Personnel Services – Salaries	4,034,066.05	3,932,661.76	429,278.61	8,396,006.42
Total Personnel Services – Salaries	\$4,034,066.05	\$3,932,661.76	\$429,278.61	\$8,396,006.42
200 Personnel Services – Employee Benefits				
210 Group Insurance – Contracted Provider	1,113,905.61	972,626.04	72,900.83	2,159,432.48
220 Social Security Contributions	284,760.62	291,593.30	35,581.16	611,935.08
230 PSERS Retirement Contributions	1,347,654.87	1,309,910.04	156,550.08	2,814,114.99
250 Unemployment Compensation	1,148.22	(86.47)	1,397.69	2,459.44
260 Workers' Compensation	20,780.22	20,230.27	2,649.34	43,659.83
291 Other Retirement Plans	8,035.00	3,171.00	372.00	11,578.00
299 All Other Employee Benefits	13,932.00	6,192.00		20,124.00
Total Personnel Services – Employee Benefits	\$2,790,216.54	\$2,603,636.18	\$269,451.10	\$5,663,303.82
300 Purchased Professional and Technical Services				
329 Professional Educational Services – Other		53,651.81		53,651.81
Total Purchased Professional and Technical Services		\$53,651.81		\$53,651.81
400 Purchased Property Services				
430 Repairs and Maintenance Services	4,095.93	1,411.52		5,507.45
440 Rentals	35,167.99	26,687.63		61,855.62
Total Purchased Property Services	\$39,263.92	\$28,099.15		\$67,363.07
500 Other Purchased Services				
510 Student Transportation Services	2,312.50	5,341.18		7,653.68
530 Communications	14,444.56	13,110.95		27,555.51
550 Printing and Binding		3,978.01		3,978.01
561 Tuition To Other School Districts Within the State	664.48	17,097.64		17,762.12
562 Tuition To Pennsylvania Charter Schools	118,189.71	118,189.72		236,379.43
568 Tuition To Private Residential Rehabilitative Institutions (PRRI) [In-State] and Detention Centers	6,062.54	6,062.53		12,125.07
569 Tuition – Other	42,028.00	109,758.14		151,786.14
580 Travel		256.82		256.82
Total Other Purchased Services	\$183,701.79	\$273,794.99		\$457,496.78
600 Supplies				
610 General Supplies	85,024.05	84,280.81	7,005.40	176,310.26
630 Food		355.46		355.46
640 Books and Periodicals	37,328.64	53,787.25	3,765.30	94,881.19
650 Supplies & Fees – Technology Related	32,516.25	40,300.66		72,816.91
Total Supplies	\$154,868.94	\$178,724.18	\$10,770.70	\$344,363.82
700 Property				
756 Capitalized Technology Equipment – Original	14,576.00	11,116.87		25,692.87
758 Capitalized Technology Software - Original		4,750.00		4,750.00
762 Capitalized Equipment - Replacement		3,300.00		3,300.00
766 Capitalized Technology Equipment – Replacement	19,970.61	23,845.78		43,816.39
Total Property	\$34,546.61	\$43,012.65		\$77,559.26
800 Other Objects				

LEA : 117596003 Northern Tioga SD

Printed 2/3/2020 3:04:35 PM

General Fund (10)

	<u>Elementary</u>	<u>Secondary</u>	<u>Federal</u>	<u>Total</u>
1100 Regular Programs – Elementary / Secondary				
800 <u>Other Objects</u>				
810 Dues and Fees	138.00			138.00
Total Other Objects	\$138.00			\$138.00
Total 1100 Regular Programs – Elementary / Secondary	\$7,236,801.85	\$7,113,580.72	\$709,500.41	\$15,059,882.98

General Fund (10)

1110 Regular Programs

100 Personnel Services – Salaries

	<u>Elementary</u>	<u>Secondary</u>	<u>Federal</u>	<u>Total</u>
100 Personnel Services – Salaries	4,034,066.05	3,932,661.76	795.00	7,967,522.81
Total Personnel Services – Salaries	\$4,034,066.05	\$3,932,661.76	\$795.00	\$7,967,522.81

200 Personnel Services – Employee Benefits

210 Group Insurance – Contracted Provider	1,113,905.61	972,626.04		2,086,531.65
220 Social Security Contributions	284,760.62	291,593.30	60.82	576,414.74
230 PSERS Retirement Contributions	1,347,654.87	1,309,910.04	265.77	2,657,830.68
250 Unemployment Compensation	1,148.22	(86.47)	7.00	1,068.75
260 Workers' Compensation	20,780.22	20,230.27	4.37	41,014.86
291 Other Retirement Plans	8,035.00	3,171.00		11,206.00
299 All Other Employee Benefits	13,932.00	6,192.00		20,124.00
Total Personnel Services – Employee Benefits	\$2,790,216.54	\$2,603,636.18	\$337.96	\$5,394,190.68

300 Purchased Professional and Technical Services

329 Professional Educational Services – Other		53,651.81		53,651.81
Total Purchased Professional and Technical Services		\$53,651.81		\$53,651.81

400 Purchased Property Services

430 Repairs and Maintenance Services	4,095.93	1,411.52		5,507.45
440 Rentals	35,167.99	26,687.63		61,855.62
Total Purchased Property Services	\$39,263.92	\$28,099.15		\$67,363.07

500 Other Purchased Services

510 Student Transportation Services	2,312.50	5,341.18		7,653.68
530 Communications	14,444.56	13,110.95		27,555.51
550 Printing and Binding		3,978.01		3,978.01
561 Tuition To Other School Districts Within the State	664.48	17,097.64		17,762.12
562 Tuition To Pennsylvania Charter Schools	118,189.71	118,189.72		236,379.43
568 Tuition To Private Residential Rehabilitative Institutions (PRRI) [In-State] and Detention Centers	6,062.54	6,062.53		12,125.07
569 Tuition – Other	42,028.00	109,758.14		151,786.14
580 Travel		256.82		256.82
Total Other Purchased Services	\$183,701.79	\$273,794.99		\$457,496.78

600 Supplies

610 General Supplies	85,024.05	84,280.81		169,304.86
630 Food		355.46		355.46
640 Books and Periodicals	37,328.64	53,787.25	3,765.30	94,881.19
650 Supplies & Fees – Technology Related	32,516.25	40,300.66		72,816.91
Total Supplies	\$154,868.94	\$178,724.18	\$3,765.30	\$337,358.42

700 Property

756 Capitalized Technology Equipment – Original	14,576.00	11,116.87		25,692.87
758 Capitalized Technology Software - Original		4,750.00		4,750.00
762 Capitalized Equipment - Replacement		3,300.00		3,300.00
766 Capitalized Technology Equipment – Replacement	19,970.61	23,845.78		43,816.39
Total Property	\$34,546.61	\$43,012.65		\$77,559.26

800 Other Objects

LEA : 117596003 Northern Tioga SD

Printed 2/3/2020 3:04:35 PM

General Fund (10)

1110 Regular Programs

800 Other Objects

810 Dues and Fees

Total Other Objects

Total 1110 Regular Programs

<u>Elementary</u>	<u>Secondary</u>	<u>Federal</u>	<u>Total</u>
138.00			138.00
\$138.00			\$138.00
\$7,236,801.85	\$7,113,580.72	\$4,898.26	\$14,355,280.83

General Fund (10)

1190 Federally-Funded Regular Programs

100 Personnel Services – Salaries

100 Personnel Services – Salaries

Total Personnel Services – Salaries

200 Personnel Services – Employee Benefits

210 Group Insurance – Contracted Provider

220 Social Security Contributions

230 PSERS Retirement Contributions

250 Unemployment Compensation

260 Workers' Compensation

291 Other Retirement Plans

Total Personnel Services – Employee Benefits

600 Supplies

610 General Supplies

Total Supplies

Total 1190 Federally-Funded Regular Programs

	<u>Elementary</u>	<u>Secondary</u>	<u>Federal</u>	<u>Total</u>
			428,483.61	428,483.61
Total Personnel Services – Salaries			\$428,483.61	\$428,483.61
			72,900.83	72,900.83
			35,520.34	35,520.34
			156,284.31	156,284.31
			1,390.69	1,390.69
			2,644.97	2,644.97
			372.00	372.00
Total Personnel Services – Employee Benefits			\$269,113.14	\$269,113.14
			7,005.40	7,005.40
Total Supplies			\$7,005.40	\$7,005.40
Total 1190 Federally-Funded Regular Programs			\$704,602.15	\$704,602.15

General Fund (10)

1200 Special Programs – Elementary / Secondary

	<u>Elementary</u>	<u>Secondary</u>	<u>Federal</u>	<u>Total</u>
100 Personnel Services – Salaries				
100 Personnel Services – Salaries	1,137,665.72	1,125,042.93	150,716.81	2,413,425.46
Total Personnel Services – Salaries	\$1,137,665.72	\$1,125,042.93	\$150,716.81	\$2,413,425.46
200 Personnel Services – Employee Benefits				
210 Group Insurance – Contracted Provider	523,940.47	541,256.36	26,728.60	1,091,925.43
220 Social Security Contributions	83,163.26	83,269.49	11,170.77	177,603.52
230 PSERS Retirement Contributions	373,961.98	375,996.68	50,384.48	800,343.14
250 Unemployment Compensation	219.13	346.59	379.27	944.99
260 Workers' Compensation	5,889.86	5,833.48	829.13	12,552.47
291 Other Retirement Plans	890.00	856.00		1,746.00
299 All Other Employee Benefits	645.00	1,935.00		2,580.00
Total Personnel Services – Employee Benefits	\$988,709.70	\$1,009,493.60	\$89,492.25	\$2,087,695.55
300 Purchased Professional and Technical Services				
322 Professional Educational Services – Ius	72,983.87	71,697.45		144,681.32
330 Other Professional Services	27,442.54	27,442.53		54,885.07
Total Purchased Professional and Technical Services	\$100,426.41	\$99,139.98		\$199,566.39
400 Purchased Property Services				
430 Repairs and Maintenance Services	1,016.50	1,016.48		2,032.98
Total Purchased Property Services	\$1,016.50	\$1,016.48		\$2,032.98
500 Other Purchased Services				
510 Student Transportation Services	2,000.06	1,545.76		3,545.82
561 Tuition To Other School Districts Within the State	20,142.46	3,683.05		23,825.51
562 Tuition To Pennsylvania Charter Schools	138,744.45	138,744.45		277,488.90
567 Tuition To Approved Private Schools (APS) and PA Chartered Schools for the Deaf and Blind	7,158.24	7,158.23		14,316.47
569 Tuition – Other	31,582.00	31,582.00		63,164.00
580 Travel	101.78	101.77		203.55
Total Other Purchased Services	\$199,728.99	\$182,815.26		\$382,544.25
600 Supplies				
610 General Supplies	6,670.58	7,250.09		13,920.67
630 Food	1,047.54	22.95		1,070.49
650 Supplies & Fees – Technology Related	299.00			299.00
Total Supplies	\$8,017.12	\$7,273.04		\$15,290.16
Total 1200 Special Programs – Elementary / Secondary	\$2,435,564.44	\$2,424,781.29	\$240,209.06	\$5,100,554.79

General Fund (10)

1210 Life Skills Support

	<u>Elementary</u>	<u>Secondary</u>	<u>Federal</u>	<u>Total</u>
100 Personnel Services – Salaries				
100 Personnel Services – Salaries	180,355.71	189,851.59		370,207.30
Total Personnel Services – Salaries	\$180,355.71	\$189,851.59		\$370,207.30
200 Personnel Services – Employee Benefits				
210 Group Insurance – Contracted Provider	89,432.52	110,119.22		199,551.74
220 Social Security Contributions	13,247.17	13,724.51		26,971.68
230 PSERS Retirement Contributions	59,724.44	62,979.23		122,703.67
250 Unemployment Compensation	55.40	67.13		122.53
260 Workers' Compensation	935.55	985.23		1,920.78
291 Other Retirement Plans	100.00	200.00		300.00
299 All Other Employee Benefits		387.00		387.00
Total Personnel Services – Employee Benefits	\$163,495.08	\$188,462.32		\$351,957.40
500 Other Purchased Services				
510 Student Transportation Services	1,017.02	1,088.97		2,105.99
561 Tuition To Other School Districts Within the State	1,111.75	1,111.75		2,223.50
569 Tuition – Other	31,582.00	31,582.00		63,164.00
Total Other Purchased Services	\$33,710.77	\$33,782.72		\$67,493.49
600 Supplies				
610 General Supplies	1,665.87	2,544.41		4,210.28
630 Food	1,047.54	22.95		1,070.49
Total Supplies	\$2,713.41	\$2,567.36		\$5,280.77
Total 1210 Life Skills Support	\$380,274.97	\$414,663.99		\$794,938.96

General Fund (10)

1220 Sensory Support

	<u>Elementary</u>	<u>Secondary</u>	<u>Federal</u>	<u>Total</u>
100 Personnel Services – Salaries				
100 Personnel Services – Salaries			116,063.00	116,063.00
Total Personnel Services – Salaries			\$116,063.00	\$116,063.00
200 Personnel Services – Employee Benefits				
210 Group Insurance – Contracted Provider	4,098.49	4,098.48	18,318.68	26,515.65
220 Social Security Contributions	0.23	0.22	8,547.32	8,547.77
230 PSERS Retirement Contributions			38,799.75	38,799.75
250 Unemployment Compensation	(77.46)	(77.46)	175.99	21.07
260 Workers' Compensation	(18.36)	(18.35)	638.52	601.81
Total Personnel Services – Employee Benefits	\$4,002.90	\$4,002.89	\$66,480.26	\$74,486.05
300 Purchased Professional and Technical Services				
322 Professional Educational Services – lus	41,056.62	41,056.60		82,113.22
Total Purchased Professional and Technical Services	\$41,056.62	\$41,056.60		\$82,113.22
400 Purchased Property Services				
430 Repairs and Maintenance Services	1,016.50	1,016.48		2,032.98
Total Purchased Property Services	\$1,016.50	\$1,016.48		\$2,032.98
500 Other Purchased Services				
580 Travel	101.78	101.77		203.55
Total Other Purchased Services	\$101.78	\$101.77		\$203.55
600 Supplies				
610 General Supplies	279.97	279.97		559.94
Total Supplies	\$279.97	\$279.97		\$559.94
Total 1220 Sensory Support	\$46,457.77	\$46,457.71	\$182,543.26	\$275,458.74

General Fund (10)

1230 Emotional Support

	<u>Elementary</u>	<u>Secondary</u>	<u>Federal</u>	<u>Total</u>
100 Personnel Services – Salaries				
100 Personnel Services – Salaries	229,597.28	121,025.83		350,623.11
Total Personnel Services – Salaries	\$229,597.28	\$121,025.83		\$350,623.11
200 Personnel Services – Employee Benefits				
210 Group Insurance – Contracted Provider	73,681.53	64,776.90		138,458.43
220 Social Security Contributions	16,739.87	8,938.60		25,678.47
230 PSERS Retirement Contributions	75,640.86	40,358.66		115,999.52
250 Unemployment Compensation	92.79	62.35		155.14
260 Workers' Compensation	1,190.80	629.15		1,819.95
291 Other Retirement Plans	100.00	356.00		456.00
Total Personnel Services – Employee Benefits	\$167,445.85	\$115,121.66		\$282,567.51
300 Purchased Professional and Technical Services				
322 Professional Educational Services – Ius	26,368.22	26,368.22		52,736.44
Total Purchased Professional and Technical Services	\$26,368.22	\$26,368.22		\$52,736.44
500 Other Purchased Services				
510 Student Transportation Services	945.54	103.29		1,048.83
561 Tuition To Other School Districts Within the State	18,980.71	2,521.30		21,502.01
Total Other Purchased Services	\$19,926.25	\$2,624.59		\$22,550.84
600 Supplies				
610 General Supplies	2,404.42	1,765.58		4,170.00
650 Supplies & Fees – Technology Related	299.00			299.00
Total Supplies	\$2,703.42	\$1,765.58		\$4,469.00
Total 1230 Emotional Support	\$446,041.02	\$266,905.88		\$712,946.90

General Fund (10)

1240 Academic Support

	<u>Elementary</u>	<u>Secondary</u>	<u>Federal</u>	<u>Total</u>
100 Personnel Services – Salaries				
100 Personnel Services – Salaries	714,507.68	737,742.06	34,653.81	1,486,903.55
Total Personnel Services – Salaries	\$714,507.68	\$737,742.06	\$34,653.81	\$1,486,903.55
200 Personnel Services – Employee Benefits				
210 Group Insurance – Contracted Provider	356,727.93	334,519.06	8,409.92	699,656.91
220 Social Security Contributions	52,239.02	54,973.26	2,623.45	109,835.73
230 PSERS Retirement Contributions	234,263.77	247,191.94	11,584.73	493,040.44
250 Unemployment Compensation	107.81	232.54	203.28	543.63
260 Workers' Compensation	3,713.38	3,841.22	190.61	7,745.21
291 Other Retirement Plans	690.00	300.00		990.00
299 All Other Employee Benefits	645.00			645.00
Total Personnel Services – Employee Benefits	\$648,386.91	\$641,058.02	\$23,011.99	\$1,312,456.92
300 Purchased Professional and Technical Services				
322 Professional Educational Services – Ius	5,559.03	4,272.63		9,831.66
Total Purchased Professional and Technical Services	\$5,559.03	\$4,272.63		\$9,831.66
500 Other Purchased Services				
510 Student Transportation Services		215.00		215.00
561 Tuition To Other School Districts Within the State	50.00	50.00		100.00
Total Other Purchased Services	\$50.00	\$265.00		\$315.00
600 Supplies				
610 General Supplies	2,251.07	1,207.54		3,458.61
Total Supplies	\$2,251.07	\$1,207.54		\$3,458.61
Total 1240 Academic Support	\$1,370,754.69	\$1,384,545.25	\$57,665.80	\$2,812,965.74

General Fund (10)

	<u>Elementary</u>	<u>Secondary</u>	<u>Federal</u>	<u>Total</u>
1241 Learning Support – Public				
100 Personnel Services – Salaries				
100 Personnel Services – Salaries	662,169.42	724,657.32	34,653.81	1,421,480.55
Total Personnel Services – Salaries	\$662,169.42	\$724,657.32	\$34,653.81	\$1,421,480.55
200 Personnel Services – Employee Benefits				
210 Group Insurance – Contracted Provider	336,977.29	327,330.35	8,409.92	672,717.56
220 Social Security Contributions	48,380.99	54,007.60	2,623.45	105,012.04
230 PSERS Retirement Contributions	216,766.87	242,817.71	11,584.73	471,169.31
250 Unemployment Compensation	37.43	214.96	203.28	455.67
260 Workers' Compensation	3,425.55	3,769.42	190.61	7,385.58
291 Other Retirement Plans	690.00	300.00		990.00
299 All Other Employee Benefits	645.00			645.00
Total Personnel Services – Employee Benefits	\$606,923.13	\$628,440.04	\$23,011.99	\$1,258,375.16
300 Purchased Professional and Technical Services				
322 Professional Educational Services – lus	5,559.03	4,272.63		9,831.66
Total Purchased Professional and Technical Services	\$5,559.03	\$4,272.63		\$9,831.66
500 Other Purchased Services				
510 Student Transportation Services		215.00		215.00
561 Tuition To Other School Districts Within the State	50.00	50.00		100.00
Total Other Purchased Services	\$50.00	\$265.00		\$315.00
600 Supplies				
610 General Supplies	2,251.07	1,207.54		3,458.61
Total Supplies	\$2,251.07	\$1,207.54		\$3,458.61
Total 1241 Learning Support – Public	\$1,276,952.65	\$1,358,842.53	\$57,665.80	\$2,693,460.98

General Fund (10)

1243 Gifted Support

	<u>Elementary</u>	<u>Secondary</u>	<u>Federal</u>	<u>Total</u>
100 Personnel Services – Salaries				
100 Personnel Services – Salaries	52,338.26	13,084.74		65,423.00
Total Personnel Services – Salaries	\$52,338.26	\$13,084.74		\$65,423.00
200 Personnel Services – Employee Benefits				
210 Group Insurance – Contracted Provider	19,750.64	7,188.71		26,939.35
220 Social Security Contributions	3,858.03	965.66		4,823.69
230 PSERS Retirement Contributions	17,496.90	4,374.23		21,871.13
250 Unemployment Compensation	70.38	17.58		87.96
260 Workers' Compensation	287.83	71.80		359.63
Total Personnel Services – Employee Benefits	\$41,463.78	\$12,617.98		\$54,081.76
Total 1243 Gifted Support	\$93,802.04	\$25,702.72		\$119,504.76

General Fund (10)

1260 Physical Support

300 Purchased Professional and Technical Services

330 Other Professional Services

Total Purchased Professional and Technical Services

Total 1260 Physical Support

	<u>Elementary</u>	<u>Secondary</u>	<u>Federal</u>	<u>Total</u>
330 Other Professional Services	27,442.54	27,442.53		54,885.07
Total Purchased Professional and Technical Services	\$27,442.54	\$27,442.53		\$54,885.07
Total 1260 Physical Support	\$27,442.54	\$27,442.53		\$54,885.07

General Fund (10)

1270 Multi-Handicapped Support

	<u>Elementary</u>	<u>Secondary</u>	<u>Federal</u>	<u>Total</u>
100 Personnel Services – Salaries				
100 Personnel Services – Salaries		63,218.41		63,218.41
Total Personnel Services – Salaries		\$63,218.41		\$63,218.41
200 Personnel Services – Employee Benefits				
210 Group Insurance – Contracted Provider		27,742.70		27,742.70
220 Social Security Contributions		4,695.94		4,695.94
230 PSERS Retirement Contributions		21,133.94		21,133.94
250 Unemployment Compensation		21.45		21.45
260 Workers' Compensation		327.74		327.74
299 All Other Employee Benefits		1,548.00		1,548.00
Total Personnel Services – Employee Benefits		\$55,469.77		\$55,469.77
500 Other Purchased Services				
510 Student Transportation Services		101.00		101.00
Total Other Purchased Services		\$101.00		\$101.00
600 Supplies				
610 General Supplies		1,383.35		1,383.35
Total Supplies		\$1,383.35		\$1,383.35
Total 1270 Multi-Handicapped Support		\$120,172.53		\$120,172.53

General Fund (10)

	<u>Elementary</u>	<u>Secondary</u>	<u>Federal</u>	<u>Total</u>
1290 Special Programs - Other Support				
100 Personnel Services – Salaries				
100 Personnel Services – Salaries	13,205.05	13,205.04		26,410.09
Total Personnel Services – Salaries	\$13,205.05	\$13,205.04		\$26,410.09
200 Personnel Services – Employee Benefits				
220 Social Security Contributions	936.97	936.96		1,873.93
230 PSERS Retirement Contributions	4,332.91	4,332.91		8,665.82
250 Unemployment Compensation	40.59	40.58		81.17
260 Workers' Compensation	68.49	68.49		136.98
Total Personnel Services – Employee Benefits	\$5,378.96	\$5,378.94		\$10,757.90
500 Other Purchased Services				
510 Student Transportation Services	37.50	37.50		75.00
562 Tuition To Pennsylvania Charter Schools	138,744.45	138,744.45		277,488.90
567 Tuition To Approved Private Schools (APS) and PA Chartered Schools for the Deaf and Blind	7,158.24	7,158.23		14,316.47
Total Other Purchased Services	\$145,940.19	\$145,940.18		\$291,880.37
600 Supplies				
610 General Supplies	69.25	69.24		138.49
Total Supplies	\$69.25	\$69.24		\$138.49
Total 1290 Special Programs - Other Support	\$164,593.45	\$164,593.40		\$329,186.85

General Fund (10)

1300 Vocational Education

	<u>Elementary</u>	<u>Secondary</u>	<u>Federal</u>	<u>Total</u>
100 Personnel Services – Salaries				
100 Personnel Services – Salaries		125,649.64		125,649.64
Total Personnel Services – Salaries		\$125,649.64		\$125,649.64
200 Personnel Services – Employee Benefits				
210 Group Insurance – Contracted Provider		33,118.30		33,118.30
220 Social Security Contributions		9,317.06		9,317.06
230 PSERS Retirement Contributions		41,982.39		41,982.39
250 Unemployment Compensation		19.53		19.53
260 Workers' Compensation		653.27		653.27
291 Other Retirement Plans		363.00		363.00
Total Personnel Services – Employee Benefits		\$85,453.55		\$85,453.55
400 Purchased Property Services				
430 Repairs and Maintenance Services		192.02		192.02
Total Purchased Property Services		\$192.02		\$192.02
500 Other Purchased Services				
510 Student Transportation Services		461.70	2,090.45	2,552.15
580 Travel		1,432.37		1,432.37
Total Other Purchased Services		\$1,894.07	\$2,090.45	\$3,984.52
600 Supplies				
610 General Supplies		2,983.50	4,585.25	7,568.75
Total Supplies		\$2,983.50	\$4,585.25	\$7,568.75
700 Property				
752 Capital Equipment – Original and Additional		8,225.26		8,225.26
Total Property		\$8,225.26		\$8,225.26
800 Other Objects				
810 Dues and Fees		1,796.25		1,796.25
Total Other Objects		\$1,796.25		\$1,796.25
Total 1300 Vocational Education		\$226,194.29	\$6,675.70	\$232,869.99

General Fund (10)

	<u>Elementary</u>	<u>Secondary</u>	<u>Federal</u>	<u>Total</u>
1400 Other Instructional Programs – Elementary / Secondary				
100 Personnel Services – Salaries				
100 Personnel Services – Salaries	3,090.00	47,613.08		50,703.08
Total Personnel Services – Salaries	\$3,090.00	\$47,613.08		\$50,703.08
200 Personnel Services – Employee Benefits				
210 Group Insurance – Contracted Provider		10,349.95		10,349.95
220 Social Security Contributions	236.40	3,582.43		3,818.83
230 PSERS Retirement Contributions	1,033.00	15,855.73		16,888.73
250 Unemployment Compensation	1.32	115.36		116.68
260 Workers' Compensation	17.01	261.89		278.90
Total Personnel Services – Employee Benefits	\$1,287.73	\$30,165.36		\$31,453.09
300 Purchased Professional and Technical Services				
322 Professional Educational Services – lus	9,227.80	10,826.91		20,054.71
330 Other Professional Services		14,660.87		14,660.87
Total Purchased Professional and Technical Services	\$9,227.80	\$25,487.78		\$34,715.58
400 Purchased Property Services				
440 Rentals		11,680.00		11,680.00
Total Purchased Property Services		\$11,680.00		\$11,680.00
500 Other Purchased Services				
561 Tuition To Other School Districts Within the State		1,295.99		1,295.99
569 Tuition – Other		300.00		300.00
580 Travel		3,527.84		3,527.84
Total Other Purchased Services		\$5,123.83		\$5,123.83
600 Supplies				
610 General Supplies		1,333.93		1,333.93
Total Supplies		\$1,333.93		\$1,333.93
Total 1400 Other Instructional Programs – Elementary / Secondary	\$13,605.53	\$121,403.98		\$135,009.51

General Fund (10)

1410 Drivers' Education

	<u>Elementary</u>	<u>Secondary</u>	<u>Federal</u>	<u>Total</u>
100 Personnel Services – Salaries				
100 Personnel Services – Salaries		37,823.08		37,823.08
Total Personnel Services – Salaries		\$37,823.08		\$37,823.08
200 Personnel Services – Employee Benefits				
210 Group Insurance – Contracted Provider		10,349.95		10,349.95
220 Social Security Contributions		2,833.49		2,833.49
230 PSERS Retirement Contributions		12,646.53		12,646.53
250 Unemployment Compensation		57.98		57.98
260 Workers' Compensation		208.05		208.05
Total Personnel Services – Employee Benefits		\$26,096.00		\$26,096.00
400 Purchased Property Services				
440 Rentals		11,680.00		11,680.00
Total Purchased Property Services		\$11,680.00		\$11,680.00
600 Supplies				
610 General Supplies		1,333.93		1,333.93
Total Supplies		\$1,333.93		\$1,333.93
Total 1410 Drivers' Education		\$76,933.01		\$76,933.01

General Fund (10)

1420 Summer School

100 Personnel Services – Salaries

100 Personnel Services – Salaries

Total Personnel Services – Salaries

200 Personnel Services – Employee Benefits

220 Social Security Contributions

230 PSERS Retirement Contributions

260 Workers' Compensation

Total Personnel Services – Employee Benefits

Total 1420 Summer School

	<u>Elementary</u>	<u>Secondary</u>	<u>Federal</u>	<u>Total</u>
		2,355.00		2,355.00
		\$2,355.00		\$2,355.00
		180.16		180.16
		790.54		790.54
		12.95		12.95
		\$983.65		\$983.65
		\$3,338.65		\$3,338.65

General Fund (10)

	<u>Elementary</u>	<u>Secondary</u>	<u>Federal</u>	<u>Total</u>
1430 Homebound Instruction				
100 Personnel Services – Salaries				
100 Personnel Services – Salaries	300.00	7,435.00		7,735.00
Total Personnel Services – Salaries	\$300.00	\$7,435.00		\$7,735.00
200 Personnel Services – Employee Benefits				
220 Social Security Contributions	22.96	568.78		591.74
230 PSERS Retirement Contributions	100.30	2,418.66		2,518.96
250 Unemployment Compensation	1.32	57.38		58.70
260 Workers' Compensation	1.66	40.89		42.55
Total Personnel Services – Employee Benefits	\$126.24	\$3,085.71		\$3,211.95
500 Other Purchased Services				
569 Tuition – Other		300.00		300.00
580 Travel		3,527.84		3,527.84
Total Other Purchased Services		\$3,827.84		\$3,827.84
Total 1430 Homebound Instruction	\$426.24	\$14,348.55		\$14,774.79

LEA : 117596003 Northern Tioga SD

Printed 2/3/2020 3:04:35 PM

General Fund (10)

1442 Alternative Education Programs

300 Purchased Professional and Technical Services

322 Professional Educational Services – lus

330 Other Professional Services

Total Purchased Professional and Technical Services

Elementary

Secondary

Federal

Total

9,227.80

10,826.91

20,054.71

14,660.87

14,660.87

\$9,227.80

\$25,487.78

\$34,715.58

500 Other Purchased Services

561 Tuition To Other School Districts Within the State

Total Other Purchased Services

1,295.99

1,295.99

\$1,295.99

\$1,295.99

Total 1442 Alternative Education Programs

\$9,227.80

\$26,783.77

\$36,011.57

General Fund (10)

	<u>Elementary</u>	<u>Secondary</u>	<u>Federal</u>	<u>Total</u>
1450 Instructional Programs Outside the Established School Day				
100 Personnel Services – Salaries				
100 Personnel Services – Salaries	2,790.00			2,790.00
Total Personnel Services – Salaries	\$2,790.00			\$2,790.00
200 Personnel Services – Employee Benefits				
220 Social Security Contributions	213.44			213.44
230 PSERS Retirement Contributions	932.70			932.70
260 Workers' Compensation	15.35			15.35
Total Personnel Services – Employee Benefits	\$1,161.49			\$1,161.49
Total 1450 Instructional Programs Outside the Established School Day	\$3,951.49			\$3,951.49

LEA : 117596003 Northern Tioga SD

Printed 2/3/2020 3:04:35 PM

General Fund (10)

1800 Pre-Kindergarten

Elementary

Secondary

Federal

Total

100 Personnel Services – Salaries

100 Personnel Services – Salaries

229,808.61

Total Personnel Services – Salaries

\$229,808.61

200 Personnel Services – Employee Benefits

210 Group Insurance – Contracted Provider

58,049.64

220 Social Security Contributions

17,268.21

230 PSERS Retirement Contributions

76,337.81

250 Unemployment Compensation

545.84

260 Workers' Compensation

1,265.04

291 Other Retirement Plans

150.00

Total Personnel Services – Employee Benefits

\$153,616.54

Total 1800 Pre-Kindergarten

\$383,425.15

General Fund (10)

1801 Pre-K Instruction

Elementary

Secondary

Federal

Total

100 Personnel Services – Salaries

100 Personnel Services – Salaries

229,808.61

Total Personnel Services – Salaries

\$229,808.61

200 Personnel Services – Employee Benefits

210 Group Insurance – Contracted Provider

58,049.64

220 Social Security Contributions

17,268.21

230 PSERS Retirement Contributions

76,337.81

250 Unemployment Compensation

545.84

260 Workers' Compensation

1,265.04

291 Other Retirement Plans

150.00

Total Personnel Services – Employee Benefits

\$153,616.54

Total 1801 Pre-K Instruction

\$383,425.15

General Fund (10)

2000 Support Services

Total

100 Personnel Services – Salaries

100 Personnel Services – Salaries 3,235,955.11

Total Personnel Services – Salaries \$3,235,955.11

200 Personnel Services – Employee Benefits

210 Group Insurance – Contracted Provider 920,916.36

220 Social Security Contributions 241,736.51

230 PSERS Retirement Contributions 1,075,154.38

240 Tuition Reimbursement 90,326.00

250 Unemployment Compensation 961.24

260 Workers' Compensation 16,977.67

291 Other Retirement Plans 200.00

299 All Other Employee Benefits 2,172.68

Total Personnel Services – Employee Benefits \$2,348,444.84

300 Purchased Professional and Technical Services

310 Official / Administrative Services 35,055.07

330 Other Professional Services 104,710.66

340 Technical Services 86,283.96

350 Security / Safety Services 3,000.00

360 Employee Training and Development Services 33,248.72

390 Other Purchased Professional and Technical Services 544.00

Total Purchased Professional and Technical Services \$262,842.41

400 Purchased Property Services

410 Cleaning Services 41,400.19

420 Utility Services 100,225.72

430 Repairs and Maintenance Services 188,914.75

440 Rentals 27,880.55

Total Purchased Property Services \$358,421.21

500 Other Purchased Services

510 Student Transportation Services 1,895.80

513 Contracted Carriers 2,021,604.50

516 Student Transportation Services From the IU 17,314.26

520 Insurance – General 16,395.49

523 General Property and Liability Insurance 146,566.00

530 Communications 74,354.03

549 Other Advertising/Public Relations 6,119.12

550 Printing and Binding 28,585.00

580 Travel 48,807.46

Total Other Purchased Services \$2,361,641.66

600 Supplies

610 General Supplies 157,331.05

620 Energy 425,178.46

630 Food 4,750.15

640 Books and Periodicals 28,885.86

650 Supplies & Fees – Technology Related 216,594.35

General Fund (10)

2000 Support Services

Total Supplies	<u>Total</u>
	\$832,739.87

700 Property

752 Capital Equipment – Original and Additional	1,648.00
756 Capitalized Technology Equipment – Original	21,496.92
762 Capitalized Equipment - Replacement	51,832.51
766 Capitalized Technology Equipment – Replacement	16,456.40

Total Property	\$91,433.83
-----------------------	--------------------

800 Other Objects

810 Dues and Fees	19,012.77
-------------------	-----------

Total Other Objects	\$19,012.77
----------------------------	--------------------

Total 2000 Support Services	\$9,510,491.70
------------------------------------	-----------------------

General Fund (10)

2100 Support Services – Students

100 Personnel Services – Salaries

	<u>Elementary</u>	<u>Secondary</u>	<u>Federal</u>	<u>Total</u>
100 Personnel Services – Salaries	54,752.39	297,434.13	188,030.52	597,859.54
Total Personnel Services – Salaries	\$54,752.39	\$297,434.13	\$188,030.52	\$597,859.54

200 Personnel Services – Employee Benefits

210 Group Insurance – Contracted Provider	13,184.43	101,576.39	57,877.40	176,842.50
220 Social Security Contributions	4,141.53	21,385.19	13,924.83	43,818.77
230 PSERS Retirement Contributions	18,704.87	97,448.68	62,858.54	198,281.97
250 Unemployment Compensation	(66.91)	63.23	263.25	270.10
260 Workers' Compensation	268.39	1,511.20	1,034.44	3,131.15
Total Personnel Services – Employee Benefits	\$36,232.31	\$221,984.69	\$135,958.46	\$422,344.49

400 Purchased Property Services

440 Rentals		1,008.54		1,008.54
Total Purchased Property Services		\$1,008.54		\$1,008.54

500 Other Purchased Services

510 Student Transportation Services		1,895.80		1,895.80
530 Communications		3,538.32		3,538.32
580 Travel	1,135.78	871.18		3,281.96
Total Other Purchased Services	\$1,135.78	\$6,305.30		\$8,716.08

600 Supplies

610 General Supplies	1,750.01	2,485.03		4,775.40
630 Food		373.89		373.89
Total Supplies	\$1,750.01	\$2,858.92		\$5,149.29

800 Other Objects

810 Dues and Fees	247.50	247.50		720.00
Total Other Objects	\$247.50	\$247.50		\$720.00

Total 2100 Support Services – Students

	\$94,117.99	\$529,839.08	\$323,988.98	\$1,035,797.94
--	--------------------	---------------------	---------------------	-----------------------

General Fund (10)

2120 Guidance Services

100 Personnel Services – Salaries

	<u>Elementary</u>	<u>Secondary</u>	<u>Federal</u>	<u>Total</u>
100 Personnel Services – Salaries		242,681.74	68,678.65	311,360.39
Total Personnel Services – Salaries		\$242,681.74	\$68,678.65	\$311,360.39

200 Personnel Services – Employee Benefits

210 Group Insurance – Contracted Provider	629.00	89,020.98	19,010.61	108,660.59
220 Social Security Contributions		17,243.66	5,099.09	22,342.75
230 PSERS Retirement Contributions		78,743.82	22,959.23	101,703.05
250 Unemployment Compensation	(77.46)	52.69	87.99	63.22
260 Workers' Compensation	(21.73)	1,221.09	377.83	1,577.19
Total Personnel Services – Employee Benefits	\$529.81	\$186,282.24	\$47,534.75	\$234,346.80

400 Purchased Property Services

440 Rentals		1,008.54		1,008.54
Total Purchased Property Services		\$1,008.54		\$1,008.54

500 Other Purchased Services

510 Student Transportation Services		1,895.80		1,895.80
530 Communications		3,538.32		3,538.32
580 Travel	617.84	353.25		971.09
Total Other Purchased Services	\$617.84	\$5,787.37		\$6,405.21

600 Supplies

610 General Supplies	661.02	1,396.04		2,057.06
630 Food		373.89		373.89
Total Supplies	\$661.02	\$1,769.93		\$2,430.95

Total 2120 Guidance Services

	\$1,808.67	\$437,529.82	\$116,213.40	\$555,551.89
--	-------------------	---------------------	---------------------	---------------------

General Fund (10)

2140 Psychological Services

	<u>Elementary</u>	<u>Secondary</u>	<u>Federal</u>	<u>Total</u>
100 Personnel Services – Salaries				
100 Personnel Services – Salaries	54,752.39	54,752.39		109,504.78
Total Personnel Services – Salaries	\$54,752.39	\$54,752.39		\$109,504.78
200 Personnel Services – Employee Benefits				
210 Group Insurance – Contracted Provider	12,555.43	12,555.41		25,110.84
220 Social Security Contributions	4,141.53	4,141.53		8,283.06
230 PSERS Retirement Contributions	18,704.87	18,704.86		37,409.73
250 Unemployment Compensation	10.55	10.54		21.09
260 Workers' Compensation	290.12	290.11		580.23
Total Personnel Services – Employee Benefits	\$35,702.50	\$35,702.45		\$71,404.95
500 Other Purchased Services				
580 Travel	517.94	517.93		1,035.87
Total Other Purchased Services	\$517.94	\$517.93		\$1,035.87
600 Supplies				
610 General Supplies	1,088.99	1,088.99		2,177.98
Total Supplies	\$1,088.99	\$1,088.99		\$2,177.98
800 Other Objects				
810 Dues and Fees	247.50	247.50		495.00
Total Other Objects	\$247.50	\$247.50		\$495.00
Total 2140 Psychological Services	\$92,309.32	\$92,309.26		\$184,618.58

General Fund (10)

2160 Social Work Services

100 Personnel Services – Salaries

100 Personnel Services – Salaries

Total Personnel Services – Salaries

200 Personnel Services – Employee Benefits

210 Group Insurance – Contracted Provider

220 Social Security Contributions

230 PSERS Retirement Contributions

250 Unemployment Compensation

260 Workers' Compensation

Total Personnel Services – Employee Benefits

500 Other Purchased Services

580 Travel

Total Other Purchased Services

600 Supplies

610 General Supplies

Total Supplies

800 Other Objects

810 Dues and Fees

Total Other Objects

Total 2160 Social Work Services

Elementary

Secondary

Federal

Total

119,351.87

176,994.37

\$119,351.87

\$176,994.37

38,866.79

43,071.07

8,825.74

13,192.96

39,899.31

59,169.19

175.26

185.79

656.61

973.73

\$88,423.71

\$116,592.74

1,275.00

\$1,275.00

540.36

\$540.36

225.00

\$225.00

\$207,775.58

\$295,627.47

General Fund (10)

2200 Support Services – Instructional Staff

	<u>Elementary</u>	<u>Secondary</u>	<u>Federal</u>	<u>Total</u>
100 Personnel Services – Salaries				
100 Personnel Services – Salaries	265,096.27	226,348.80	104,203.65	595,648.72
Total Personnel Services – Salaries	\$265,096.27	\$226,348.80	\$104,203.65	\$595,648.72
200 Personnel Services – Employee Benefits				
210 Group Insurance – Contracted Provider	86,436.09	48,075.66	3,120.90	137,632.65
220 Social Security Contributions	19,864.18	17,064.65	8,197.36	45,126.19
230 PSERS Retirement Contributions	87,568.81	74,698.34	35,624.53	197,891.68
240 Tuition Reimbursement	50,451.00	35,327.00		85,778.00
250 Unemployment Compensation	56.83	52.96	87.99	197.78
260 Workers' Compensation	1,403.76	1,202.89	586.25	3,192.90
Total Personnel Services – Employee Benefits	\$245,780.67	\$176,421.50	\$47,617.03	\$469,819.20
300 Purchased Professional and Technical Services				
340 Technical Services	11,790.88	1,118.63		12,909.51
360 Employee Training and Development Services	6,223.32	9,077.94	9,881.46	25,182.72
390 Other Purchased Professional and Technical Services	285.17	258.83		544.00
Total Purchased Professional and Technical Services	\$18,299.37	\$10,455.40	\$9,881.46	\$38,636.23
400 Purchased Property Services				
430 Repairs and Maintenance Services	13,629.74	12,378.90		26,008.64
440 Rentals	1,878.55	1,778.47		3,657.02
Total Purchased Property Services	\$15,508.29	\$14,157.37		\$29,665.66
500 Other Purchased Services				
530 Communications	5,005.88	5,005.84		10,011.72
580 Travel	7,368.09	8,553.98	4,502.03	20,424.10
Total Other Purchased Services	\$12,373.97	\$13,559.82	\$4,502.03	\$30,435.82
600 Supplies				
610 General Supplies	5,052.14	6,054.00		11,106.14
630 Food	532.30	562.16		1,094.46
640 Books and Periodicals	17,100.31	11,483.46		28,583.77
650 Supplies & Fees – Technology Related	79,584.53	78,214.58		157,799.11
Total Supplies	\$102,269.28	\$96,314.20		\$198,583.48
700 Property				
756 Capitalized Technology Equipment – Original	13,124.87	8,372.05		21,496.92
766 Capitalized Technology Equipment – Replacement	7,759.20	8,697.20		16,456.40
Total Property	\$20,884.07	\$17,069.25		\$37,953.32
800 Other Objects				
810 Dues and Fees	518.85	374.15		893.00
Total Other Objects	\$518.85	\$374.15		\$893.00
Total 2200 Support Services – Instructional Staff	\$680,730.77	\$554,700.49	\$166,204.17	\$1,401,635.43

General Fund (10)

2220 Technology Support Services

	<u>Elementary</u>	<u>Secondary</u>	<u>Federal</u>	<u>Total</u>
100 Personnel Services – Salaries				
100 Personnel Services – Salaries	78,062.15	74,053.53		152,115.68
Total Personnel Services – Salaries	\$78,062.15	\$74,053.53		\$152,115.68
200 Personnel Services – Employee Benefits				
210 Group Insurance – Contracted Provider	24,452.09	22,193.67		46,645.76
220 Social Security Contributions	5,785.88	5,496.34		11,282.22
230 PSERS Retirement Contributions	26,096.20	24,755.86		50,852.06
250 Unemployment Compensation	16.56	15.03		31.59
260 Workers' Compensation	404.27	383.70		787.97
Total Personnel Services – Employee Benefits	\$56,755.00	\$52,844.60		\$109,599.60
300 Purchased Professional and Technical Services				
340 Technical Services	1,232.41	1,118.63		2,351.04
390 Other Purchased Professional and Technical Services	285.17	258.83		544.00
Total Purchased Professional and Technical Services	\$1,517.58	\$1,377.46		\$2,895.04
400 Purchased Property Services				
430 Repairs and Maintenance Services	13,548.08	12,297.24		25,845.32
Total Purchased Property Services	\$13,548.08	\$12,297.24		\$25,845.32
500 Other Purchased Services				
530 Communications	1,244.53	1,244.51		2,489.04
580 Travel	1,656.91	1,503.93		3,160.84
Total Other Purchased Services	\$2,901.44	\$2,748.44		\$5,649.88
600 Supplies				
640 Books and Periodicals	4,350.00			4,350.00
650 Supplies & Fees – Technology Related	52,536.72	64,035.31		116,572.03
Total Supplies	\$56,886.72	\$64,035.31		\$120,922.03
700 Property				
756 Capitalized Technology Equipment – Original	13,124.87	8,372.05		21,496.92
766 Capitalized Technology Equipment – Replacement	7,759.20	8,697.20		16,456.40
Total Property	\$20,884.07	\$17,069.25		\$37,953.32
Total 2220 Technology Support Services	\$230,555.04	\$224,425.83		\$454,980.87

General Fund (10)

2250 School Library Services

	<u>Elementary</u>	<u>Secondary</u>	<u>Federal</u>	<u>Total</u>
100 Personnel Services – Salaries				
100 Personnel Services – Salaries	89,975.16	56,856.57		146,831.73
Total Personnel Services – Salaries	\$89,975.16	\$56,856.57		\$146,831.73
200 Personnel Services – Employee Benefits				
210 Group Insurance – Contracted Provider	41,160.51	6,864.21		48,024.72
220 Social Security Contributions	6,743.84	4,340.54		11,084.38
230 PSERS Retirement Contributions	29,558.56	18,332.43		47,890.99
250 Unemployment Compensation	34.06	26.97		61.03
260 Workers' Compensation	466.22	294.63		760.85
Total Personnel Services – Employee Benefits	\$77,963.19	\$29,858.78		\$107,821.97
500 Other Purchased Services				
580 Travel	58.58	56.96		115.54
Total Other Purchased Services	\$58.58	\$56.96		\$115.54
600 Supplies				
610 General Supplies	2,920.21	4,301.88		7,222.09
640 Books and Periodicals	12,527.60	10,981.85		23,509.45
650 Supplies & Fees – Technology Related	19,552.65	5,486.82		25,039.47
Total Supplies	\$35,000.46	\$20,770.55		\$55,771.01
800 Other Objects				
810 Dues and Fees	30.00	30.00		60.00
Total Other Objects	\$30.00	\$30.00		\$60.00
Total 2250 School Library Services	\$203,027.39	\$107,572.86		\$310,600.25

General Fund (10)

2260 Instruction and Curriculum Development Services

	<u>Elementary</u>	<u>Secondary</u>	<u>Federal</u>	<u>Total</u>
100 Personnel Services – Salaries				
100 Personnel Services – Salaries	93,961.52	91,582.27	104,203.65	289,747.44
Total Personnel Services – Salaries	\$93,961.52	\$91,582.27	\$104,203.65	\$289,747.44
200 Personnel Services – Employee Benefits				
210 Group Insurance – Contracted Provider	20,823.49	19,017.78	3,120.90	42,962.17
220 Social Security Contributions	7,097.51	6,932.77	8,197.36	22,227.64
230 PSERS Retirement Contributions	31,346.58	30,588.29	35,624.53	97,559.40
250 Unemployment Compensation	(21.05)	(22.09)	87.99	44.85
260 Workers' Compensation	516.22	503.36	586.25	1,605.83
Total Personnel Services – Employee Benefits	\$59,762.75	\$57,020.11	\$47,617.03	\$164,399.89
300 Purchased Professional and Technical Services				
340 Technical Services	10,558.47			10,558.47
Total Purchased Professional and Technical Services	\$10,558.47			\$10,558.47
400 Purchased Property Services				
430 Repairs and Maintenance Services	81.66	81.66		163.32
440 Rentals	1,878.55	1,778.47		3,657.02
Total Purchased Property Services	\$1,960.21	\$1,860.13		\$3,820.34
500 Other Purchased Services				
530 Communications	3,761.35	3,761.33		7,522.68
580 Travel	1,410.72	1,406.52		2,817.24
Total Other Purchased Services	\$5,172.07	\$5,167.85		\$10,339.92
600 Supplies				
610 General Supplies	1,598.28	1,267.77		2,866.05
630 Food	39.42	35.92		75.34
640 Books and Periodicals	222.71	501.61		724.32
650 Supplies & Fees – Technology Related	7,495.16	8,692.45		16,187.61
Total Supplies	\$9,355.57	\$10,497.75		\$19,853.32
800 Other Objects				
810 Dues and Fees	488.85	344.15		833.00
Total Other Objects	\$488.85	\$344.15		\$833.00
Total 2260 Instruction and Curriculum Development Services	\$181,259.44	\$166,472.26	\$151,820.68	\$499,552.38

General Fund (10)

	<u>Elementary</u>	<u>Secondary</u>	<u>Federal</u>	<u>Total</u>
2270 Instructional Staff Professional Development Services				
100 Personnel Services – Salaries				
100 Personnel Services – Salaries	3,097.44	3,856.43		6,953.87
Total Personnel Services – Salaries	\$3,097.44	\$3,856.43		\$6,953.87
200 Personnel Services – Employee Benefits				
220 Social Security Contributions	236.95	295.00		531.95
230 PSERS Retirement Contributions	567.47	1,021.76		1,589.23
240 Tuition Reimbursement	50,451.00	35,327.00		85,778.00
250 Unemployment Compensation	27.26	33.05		60.31
260 Workers' Compensation	17.05	21.20		38.25
Total Personnel Services – Employee Benefits	\$51,299.73	\$36,698.01		\$87,997.74
300 Purchased Professional and Technical Services				
360 Employee Training and Development Services	6,223.32	9,077.94	9,881.46	25,182.72
Total Purchased Professional and Technical Services	\$6,223.32	\$9,077.94	\$9,881.46	\$25,182.72
500 Other Purchased Services				
580 Travel	4,241.88	5,586.57	4,502.03	14,330.48
Total Other Purchased Services	\$4,241.88	\$5,586.57	\$4,502.03	\$14,330.48
600 Supplies				
610 General Supplies	533.65	484.35		1,018.00
630 Food	492.88	526.24		1,019.12
Total Supplies	\$1,026.53	\$1,010.59		\$2,037.12
Total 2270 Instructional Staff Professional Development Services	\$65,888.90	\$56,229.54	\$14,383.49	\$136,501.93

General Fund (10)

	<u>Elementary</u>	<u>Secondary</u>	<u>Federal</u>	<u>Total</u>
2300 Support Services – Administration				
100 Personnel Services – Salaries				
100 Personnel Services – Salaries	341,019.93	373,634.30		892,612.29
Total Personnel Services – Salaries	\$341,019.93	\$373,634.30		\$892,612.29
200 Personnel Services – Employee Benefits				
210 Group Insurance – Contracted Provider	100,766.93	59,767.56		200,498.11
220 Social Security Contributions	25,654.83	28,121.14		67,379.77
230 PSERS Retirement Contributions	113,970.51	124,880.57		299,377.55
250 Unemployment Compensation	64.69	57.20		147.49
260 Workers' Compensation	1,767.66	1,936.80		4,643.38
299 All Other Employee Benefits				2,172.68
Total Personnel Services – Employee Benefits	\$242,224.62	\$214,763.27		\$574,218.98
300 Purchased Professional and Technical Services				
310 Official / Administrative Services				35,055.07
330 Other Professional Services				62,907.37
340 Technical Services				56,579.65
Total Purchased Professional and Technical Services				\$154,542.09
400 Purchased Property Services				
430 Repairs and Maintenance Services	868.29	24.62		892.91
440 Rentals	12,170.60	4,902.74		21,146.50
Total Purchased Property Services	\$13,038.89	\$4,927.36		\$22,039.41
500 Other Purchased Services				
520 Insurance – General				16,045.49
530 Communications	23,297.42	21,502.97		49,246.32
549 Other Advertising/Public Relations				6,119.12
550 Printing and Binding				28,585.00
580 Travel	2,601.18	3,972.72		10,789.79
Total Other Purchased Services	\$25,898.60	\$25,475.69		\$110,785.72
600 Supplies				
610 General Supplies	2,699.27	529.94		6,586.42
630 Food	50.00	578.90		3,239.80
640 Books and Periodicals				302.09
650 Supplies & Fees – Technology Related		1,353.74		1,353.74
Total Supplies	\$2,749.27	\$2,462.58		\$11,482.05
800 Other Objects				
810 Dues and Fees	1,279.00	893.00		16,426.77
Total Other Objects	\$1,279.00	\$893.00		\$16,426.77
Total 2300 Support Services – Administration	\$626,210.31	\$622,156.20		\$1,782,107.31

General Fund (10)

2330 Tax Assessment and Collection Services

Elementary

Secondary

Federal

Total

300 Purchased Professional and Technical Services

310 Official / Administrative Services

19,778.22

340 Technical Services

56,579.65

Total Purchased Professional and Technical Services

\$76,357.87

500 Other Purchased Services

520 Insurance – General

967.49

530 Communications

1,432.31

Total Other Purchased Services

\$2,399.80

600 Supplies

610 General Supplies

104.36

Total Supplies

\$104.36

Total 2330 Tax Assessment and Collection Services

\$78,862.03

General Fund (10)

2340 Staff Relations and Negotiations Services

Elementary

Secondary

Federal

Total

300 Purchased Professional and Technical Services

330 Other Professional Services

500.00

Total Purchased Professional and Technical Services

\$500.00

Total 2340 Staff Relations and Negotiations Services

\$500.00

General Fund (10)

2350 Legal and Accounting Services

Elementary

Secondary

Federal

Total

300 Purchased Professional and Technical Services

330 Other Professional Services

46,033.37

Total Purchased Professional and Technical Services

\$46,033.37

Total 2350 Legal and Accounting Services

\$46,033.37

General Fund (10)

2360 Office of the Superintendent / Executive Director Services

	<u>Elementary</u>	<u>Secondary</u>	<u>Federal</u>	<u>Total</u>
100 Personnel Services – Salaries				
100 Personnel Services – Salaries				177,958.06
Total Personnel Services – Salaries				\$177,958.06
200 Personnel Services – Employee Benefits				
210 Group Insurance – Contracted Provider				39,929.62
220 Social Security Contributions				13,603.80
230 PSERS Retirement Contributions				60,526.47
250 Unemployment Compensation				25.60
260 Workers' Compensation				938.92
Total Personnel Services – Employee Benefits				\$115,024.41
400 Purchased Property Services				
440 Rentals				2,036.58
Total Purchased Property Services				\$2,036.58
500 Other Purchased Services				
530 Communications	2,291.64	2,291.62		4,583.26
580 Travel				4,215.89
Total Other Purchased Services	\$2,291.64	\$2,291.62		\$8,799.15
600 Supplies				
610 General Supplies				2,423.48
630 Food				1,729.23
640 Books and Periodicals				302.09
Total Supplies				\$4,454.80
800 Other Objects				
810 Dues and Fees				3,303.00
Total Other Objects				\$3,303.00
Total 2360 Office of the Superintendent / Executive Director Services	\$2,291.64	\$2,291.62		\$311,576.00

General Fund (10)

2380 Office of the Principal Services

100 Personnel Services – Salaries

	<u>Elementary</u>	<u>Secondary</u>	<u>Federal</u>	<u>Total</u>
100 Personnel Services – Salaries	341,019.93	373,634.30		714,654.23
Total Personnel Services – Salaries	\$341,019.93	\$373,634.30		\$714,654.23

200 Personnel Services – Employee Benefits

210 Group Insurance – Contracted Provider	100,766.93	59,767.56		160,534.49
220 Social Security Contributions	25,654.83	28,121.14		53,775.97
230 PSERS Retirement Contributions	113,970.51	124,880.57		238,851.08
250 Unemployment Compensation	64.69	57.20		121.89
260 Workers' Compensation	1,767.66	1,936.80		3,704.46
Total Personnel Services – Employee Benefits	\$242,224.62	\$214,763.27		\$456,987.89

400 Purchased Property Services

430 Repairs and Maintenance Services	868.29	24.62		892.91
440 Rentals	12,170.60	4,902.74		17,073.34
Total Purchased Property Services	\$13,038.89	\$4,927.36		\$17,966.25

500 Other Purchased Services

530 Communications	21,005.78	19,211.35		40,217.13
580 Travel	2,601.18	3,972.72		6,573.90
Total Other Purchased Services	\$23,606.96	\$23,184.07		\$46,791.03

600 Supplies

610 General Supplies	2,699.27	529.94		3,229.21
630 Food	50.00	578.90		628.90
650 Supplies & Fees – Technology Related		1,353.74		1,353.74
Total Supplies	\$2,749.27	\$2,462.58		\$5,211.85

800 Other Objects

810 Dues and Fees	1,279.00	893.00		2,172.00
Total Other Objects	\$1,279.00	\$893.00		\$2,172.00

Total 2380 Office of the Principal Services

	\$623,918.67	\$619,864.58		\$1,243,783.25
--	---------------------	---------------------	--	-----------------------

LEA : 117596003 Northern Tioga SD

Printed 2/3/2020 3:04:43 PM

General Fund (10)

2390 Other Administration Services

Elementary

Secondary

Federal

Total

300 Purchased Professional and Technical Services

310 Official / Administrative Services

15,276.85

Total Purchased Professional and Technical Services

\$15,276.85

Total 2390 Other Administration Services

\$15,276.85

General Fund (10)

2400 Support Services – Pupil Health

Elementary Secondary Federal Total

100 Personnel Services – Salaries

100 Personnel Services – Salaries 162,876.70

Total Personnel Services – Salaries \$162,876.70

200 Personnel Services – Employee Benefits

210 Group Insurance – Contracted Provider 64,484.49

220 Social Security Contributions 11,964.20

230 PSERS Retirement Contributions 51,771.50

250 Unemployment Compensation 50.93

260 Workers' Compensation 897.07

291 Other Retirement Plans 200.00

Total Personnel Services – Employee Benefits \$129,368.19

300 Purchased Professional and Technical Services

330 Other Professional Services 700.00

Total Purchased Professional and Technical Services \$700.00

400 Purchased Property Services

430 Repairs and Maintenance Services 250.00

Total Purchased Property Services \$250.00

500 Other Purchased Services

580 Travel 54.16

Total Other Purchased Services \$54.16

600 Supplies

610 General Supplies 10,288.30

Total Supplies \$10,288.30

700 Property

762 Capitalized Equipment - Replacement 839.00

Total Property \$839.00

Total 2400 Support Services – Pupil Health \$304,376.35

General Fund (10)

2440 Nursing Services

	<u>Elementary</u>	<u>Secondary</u>	<u>Federal</u>	<u>Total</u>
100 Personnel Services – Salaries				
100 Personnel Services – Salaries				162,876.70
Total Personnel Services – Salaries				\$162,876.70
200 Personnel Services – Employee Benefits				
210 Group Insurance – Contracted Provider				64,484.49
220 Social Security Contributions				11,964.20
230 PSERS Retirement Contributions				51,771.50
250 Unemployment Compensation				50.93
260 Workers' Compensation				897.07
291 Other Retirement Plans				200.00
Total Personnel Services – Employee Benefits				\$129,368.19
300 Purchased Professional and Technical Services				
330 Other Professional Services				700.00
Total Purchased Professional and Technical Services				\$700.00
400 Purchased Property Services				
430 Repairs and Maintenance Services				250.00
Total Purchased Property Services				\$250.00
500 Other Purchased Services				
580 Travel				54.16
Total Other Purchased Services				\$54.16
600 Supplies				
610 General Supplies				10,288.30
Total Supplies				\$10,288.30
700 Property				
762 Capitalized Equipment - Replacement				839.00
Total Property				\$839.00
Total 2440 Nursing Services				\$304,376.35

General Fund (10)

2500 Support Services – Business

Elementary

Secondary

Federal

Total

100 Personnel Services – Salaries

100 Personnel Services – Salaries 190,814.96

Total Personnel Services – Salaries \$190,814.96

200 Personnel Services – Employee Benefits

210 Group Insurance – Contracted Provider 56,468.63

220 Social Security Contributions 14,376.67

230 PSERS Retirement Contributions 63,247.84

250 Unemployment Compensation 45.29

260 Workers' Compensation 989.26

Total Personnel Services – Employee Benefits \$135,127.69

300 Purchased Professional and Technical Services

340 Technical Services 6,175.00

Total Purchased Professional and Technical Services \$6,175.00

400 Purchased Property Services

430 Repairs and Maintenance Services 4.44

440 Rentals 2,068.49

Total Purchased Property Services \$2,072.93

500 Other Purchased Services

520 Insurance – General 350.00

530 Communications 6,677.55

580 Travel 1,897.93

Total Other Purchased Services \$8,925.48

600 Supplies

610 General Supplies 6,236.12

Total Supplies \$6,236.12

800 Other Objects

810 Dues and Fees 500.00

Total Other Objects \$500.00

Total 2500 Support Services – Business \$349,852.18

General Fund (10)

2510 Fiscal Services

Elementary

Secondary

Federal

Total

100 Personnel Services – Salaries

100 Personnel Services – Salaries

111,876.19

Total Personnel Services – Salaries

\$111,876.19

200 Personnel Services – Employee Benefits

210 Group Insurance – Contracted Provider

36,751.75

220 Social Security Contributions

8,473.93

230 PSERS Retirement Contributions

37,376.69

250 Unemployment Compensation

21.31

260 Workers' Compensation

579.99

Total Personnel Services – Employee Benefits

\$83,203.67

500 Other Purchased Services

520 Insurance – General

350.00

530 Communications

684.47

580 Travel

1,897.93

Total Other Purchased Services

\$2,932.40

600 Supplies

610 General Supplies

2,512.75

Total Supplies

\$2,512.75

800 Other Objects

810 Dues and Fees

500.00

Total Other Objects

\$500.00

Total 2510 Fiscal Services

\$201,025.01

General Fund (10)

2511 Supervision of Fiscal Services - Head of Component

Elementary Secondary Federal Total

100 Personnel Services – Salaries

100 Personnel Services – Salaries 76,410.64

Total Personnel Services – Salaries \$76,410.64

200 Personnel Services – Employee Benefits

210 Group Insurance – Contracted Provider 14,151.20

220 Social Security Contributions 5,797.75

230 PSERS Retirement Contributions 25,520.52

250 Unemployment Compensation 10.76

260 Workers' Compensation 396.14

Total Personnel Services – Employee Benefits \$45,876.37

500 Other Purchased Services

520 Insurance – General 350.00

530 Communications 684.47

580 Travel 1,897.93

Total Other Purchased Services \$2,932.40

600 Supplies

610 General Supplies 353.01

Total Supplies \$353.01

800 Other Objects

810 Dues and Fees 500.00

Total Other Objects \$500.00

Total 2511 Supervision of Fiscal Services - Head of Component \$126,072.42

General Fund (10)

2514 Payroll Services

Elementary

Secondary

Federal

Total

100 Personnel Services – Salaries

100 Personnel Services – Salaries

35,465.55

Total Personnel Services – Salaries

\$35,465.55

200 Personnel Services – Employee Benefits

210 Group Insurance – Contracted Provider

22,600.55

220 Social Security Contributions

2,676.18

230 PSERS Retirement Contributions

11,856.17

250 Unemployment Compensation

10.55

260 Workers' Compensation

183.85

Total Personnel Services – Employee Benefits

\$37,327.30

600 Supplies

610 General Supplies

2,159.74

Total Supplies

\$2,159.74

Total 2514 Payroll Services

\$74,952.59

General Fund (10)

2590 Other Support Services – Business

Elementary

Secondary

Federal

Total

100 Personnel Services – Salaries

100 Personnel Services – Salaries

78,938.77

Total Personnel Services – Salaries

\$78,938.77

200 Personnel Services – Employee Benefits

210 Group Insurance – Contracted Provider

19,716.88

220 Social Security Contributions

5,902.74

230 PSERS Retirement Contributions

25,871.15

250 Unemployment Compensation

23.98

260 Workers' Compensation

409.27

Total Personnel Services – Employee Benefits

\$51,924.02

300 Purchased Professional and Technical Services

340 Technical Services

6,175.00

Total Purchased Professional and Technical Services

\$6,175.00

400 Purchased Property Services

430 Repairs and Maintenance Services

4.44

440 Rentals

2,068.49

Total Purchased Property Services

\$2,072.93

500 Other Purchased Services

530 Communications

5,993.08

Total Other Purchased Services

\$5,993.08

600 Supplies

610 General Supplies

3,723.37

Total Supplies

\$3,723.37

Total 2590 Other Support Services – Business

\$148,827.17

LEA : 117596003 Northern Tioga SD

Printed 2/3/2020 3:04:43 PM

General Fund (10)

	<u>Elementary</u>	<u>Secondary</u>	<u>Federal</u>	<u>Total</u>
2600 Operation and Maintenance of Plant Services				
100 Personnel Services – Salaries				
100 Personnel Services – Salaries				796,142.90
Total Personnel Services – Salaries				\$796,142.90
200 Personnel Services – Employee Benefits				
210 Group Insurance – Contracted Provider				284,989.98
220 Social Security Contributions				59,070.91
230 PSERS Retirement Contributions				264,583.84
250 Unemployment Compensation				249.65
260 Workers' Compensation				4,123.91
Total Personnel Services – Employee Benefits				\$613,018.29
300 Purchased Professional and Technical Services				
330 Other Professional Services				41,103.29
340 Technical Services				7,875.00
350 Security / Safety Services				3,000.00
Total Purchased Professional and Technical Services				\$51,978.29
400 Purchased Property Services				
410 Cleaning Services				41,400.19
420 Utility Services				100,225.72
430 Repairs and Maintenance Services				158,524.56
Total Purchased Property Services				\$300,150.47
500 Other Purchased Services				
523 General Property and Liability Insurance				146,566.00
530 Communications				947.96
580 Travel				320.47
Total Other Purchased Services				\$147,834.43
600 Supplies				
610 General Supplies	60,438.84	53,941.99		114,380.83
620 Energy				425,178.46
650 Supplies & Fees – Technology Related				8,825.00
Total Supplies	\$60,438.84	\$53,941.99		\$548,384.29
700 Property				
762 Capitalized Equipment - Replacement				50,993.51
Total Property				\$50,993.51
800 Other Objects				
810 Dues and Fees				473.00
Total Other Objects				\$473.00
Total 2600 Operation and Maintenance of Plant Services	\$60,438.84	\$53,941.99		\$2,508,975.18

General Fund (10)

2620 Operation of Buildings Services

100 Personnel Services – Salaries

	<u>Elementary</u>	<u>Secondary</u>	<u>Federal</u>	<u>Total</u>
100 Personnel Services – Salaries				604,400.62
Total Personnel Services – Salaries				\$604,400.62

200 Personnel Services – Employee Benefits

210 Group Insurance – Contracted Provider				242,796.91
220 Social Security Contributions				44,776.73
230 PSERS Retirement Contributions				200,640.81
250 Unemployment Compensation				218.05
260 Workers' Compensation				3,132.14
Total Personnel Services – Employee Benefits				\$491,564.64

400 Purchased Property Services

410 Cleaning Services				32,905.86
430 Repairs and Maintenance Services				19,888.40
Total Purchased Property Services				\$52,794.26

500 Other Purchased Services

523 General Property and Liability Insurance				146,566.00
580 Travel				60.50
Total Other Purchased Services				\$146,626.50

600 Supplies

610 General Supplies	33,327.27	22,674.51		56,001.78
650 Supplies & Fees – Technology Related				8,825.00
Total Supplies	\$33,327.27	\$22,674.51		\$64,826.78

700 Property

762 Capitalized Equipment - Replacement				47,343.51
Total Property				\$47,343.51

Total 2620 Operation of Buildings Services	\$33,327.27	\$22,674.51		\$1,407,556.31
---	--------------------	--------------------	--	-----------------------

General Fund (10)

2660 Safety and Security Services

Elementary

Secondary

Federal

Total

300 Purchased Professional and Technical Services

350 Security / Safety Services

3,000.00

Total Purchased Professional and Technical Services

\$3,000.00

Total 2660 Safety and Security Services

\$3,000.00

General Fund (10)

	<u>Elementary</u>	<u>Secondary</u>	<u>Federal</u>	<u>Total</u>
2690 Other Operation and Maintenance of Plant Services				
100 Personnel Services – Salaries				
100 Personnel Services – Salaries				191,742.28
Total Personnel Services – Salaries				\$191,742.28
200 Personnel Services – Employee Benefits				
210 Group Insurance – Contracted Provider				42,193.07
220 Social Security Contributions				14,294.18
230 PSERS Retirement Contributions				63,943.03
250 Unemployment Compensation				31.60
260 Workers' Compensation				991.77
Total Personnel Services – Employee Benefits				\$121,453.65
300 Purchased Professional and Technical Services				
330 Other Professional Services				41,103.29
340 Technical Services				7,875.00
Total Purchased Professional and Technical Services				\$48,978.29
400 Purchased Property Services				
410 Cleaning Services				8,494.33
420 Utility Services				100,225.72
430 Repairs and Maintenance Services				138,636.16
Total Purchased Property Services				\$247,356.21
500 Other Purchased Services				
530 Communications				947.96
580 Travel				259.97
Total Other Purchased Services				\$1,207.93
600 Supplies				
610 General Supplies	27,111.57	31,267.48		58,379.05
620 Energy				425,178.46
Total Supplies	\$27,111.57	\$31,267.48		\$483,557.51
700 Property				
762 Capitalized Equipment - Replacement				3,650.00
Total Property				\$3,650.00
800 Other Objects				
810 Dues and Fees				473.00
Total Other Objects				\$473.00
Total 2690 Other Operation and Maintenance of Plant Services	\$27,111.57	\$31,267.48		\$1,098,418.87

General Fund (10)

	<u>Elementary</u>	<u>Secondary</u>	<u>Federal</u>	<u>Total</u>
2700 Student Transportation Services				
300 <u>Purchased Professional and Technical Services</u>				
340 Technical Services				2,429.54
Total Purchased Professional and Technical Services				\$2,429.54
400 <u>Purchased Property Services</u>				
430 Repairs and Maintenance Services				3,234.20
Total Purchased Property Services				\$3,234.20
500 <u>Other Purchased Services</u>				
513 Contracted Carriers				2,021,604.50
516 Student Transportation Services From the IU				17,314.26
530 Communications				3,932.16
Total Other Purchased Services				\$2,042,850.92
600 <u>Supplies</u>				
610 General Supplies				2,446.29
630 Food				42.00
650 Supplies & Fees – Technology Related				2,194.50
Total Supplies				\$4,682.79
700 <u>Property</u>				
752 Capital Equipment – Original and Additional				1,648.00
Total Property				\$1,648.00
Total 2700 Student Transportation Services				\$2,054,845.45

General Fund (10)

	<u>Elementary</u>	<u>Secondary</u>	<u>Federal</u>	<u>Total</u>
2750 Nonpublic Transportation				
500 <u>Other Purchased Services</u>				
513 Contracted Carriers				109,818.35
Total Other Purchased Services				\$109,818.35
Total 2750 Nonpublic Transportation				\$109,818.35

General Fund (10)

2790 Other Student Transportation Services

Elementary

Secondary

Federal

Total

300 Purchased Professional and Technical Services

340 Technical Services

2,429.54

Total Purchased Professional and Technical Services

\$2,429.54

400 Purchased Property Services

430 Repairs and Maintenance Services

3,234.20

Total Purchased Property Services

\$3,234.20

500 Other Purchased Services

513 Contracted Carriers

1,911,786.15

516 Student Transportation Services From the IU

17,314.26

530 Communications

3,932.16

Total Other Purchased Services

\$1,933,032.57

600 Supplies

610 General Supplies

2,446.29

630 Food

42.00

650 Supplies & Fees – Technology Related

2,194.50

Total Supplies

\$4,682.79

700 Property

752 Capital Equipment – Original and Additional

1,648.00

Total Property

\$1,648.00

Total 2790 Other Student Transportation Services

\$1,945,027.10

General Fund (10)

	<u>Elementary</u>	<u>Secondary</u>	<u>Federal</u>	<u>Total</u>
2800 Support Services – Central				
200 <u>Personnel Services – Employee Benefits</u>				
240 Tuition Reimbursement				4,548.00
Total Personnel Services – Employee Benefits				\$4,548.00
300 <u>Purchased Professional and Technical Services</u>				
340 Technical Services				315.26
360 Employee Training and Development Services				8,066.00
Total Purchased Professional and Technical Services				\$8,381.26
500 <u>Other Purchased Services</u>				
580 Travel			1,092.37	12,039.05
Total Other Purchased Services			\$1,092.37	\$12,039.05
600 <u>Supplies</u>				
610 General Supplies			1,511.55	1,511.55
650 Supplies & Fees – Technology Related				46,422.00
Total Supplies			\$1,511.55	\$47,933.55
Total 2800 Support Services – Central			\$2,603.92	\$72,901.86

General Fund (10)

2830 Staff Services

Elementary

Secondary

Federal

Total

200 Personnel Services – Employee Benefits

240 Tuition Reimbursement

4,548.00

Total Personnel Services – Employee Benefits

\$4,548.00

300 Purchased Professional and Technical Services

360 Employee Training and Development Services

8,066.00

Total Purchased Professional and Technical Services

\$8,066.00

500 Other Purchased Services

580 Travel

10,946.68

Total Other Purchased Services

\$10,946.68

Total 2830 Staff Services

\$23,560.68

General Fund (10)

	<u>Elementary</u>	<u>Secondary</u>	<u>Federal</u>	<u>Total</u>
2834 Staff Development Services – Non-Instructional, Certified Staff Only				
200 Personnel Services – Employee Benefits				
240 Tuition Reimbursement				4,548.00
Total Personnel Services – Employee Benefits				\$4,548.00
300 Purchased Professional and Technical Services				
360 Employee Training and Development Services				5,697.00
Total Purchased Professional and Technical Services				\$5,697.00
500 Other Purchased Services				
580 Travel				4,339.31
Total Other Purchased Services				\$4,339.31
Total 2834 Staff Development Services – Non-Instructional, Certified Staff Only				\$14,584.31

General Fund (10)

	<u>Elementary</u>	<u>Secondary</u>	<u>Federal</u>	<u>Total</u>
2836 Staff Development Services – Non-Instructional, Non-Certified Staff Only				
300 <u>Purchased Professional and Technical Services</u>				
360 Employee Training and Development Services				2,369.00
Total Purchased Professional and Technical Services				\$2,369.00
500 <u>Other Purchased Services</u>				
580 Travel				6,607.37
Total Other Purchased Services				\$6,607.37
Total 2836 Staff Development Services – Non-Instructional, Non-Certified Staff Only				\$8,976.37

LEA : 117596003 Northern Tioga SD

Printed 2/3/2020 3:04:43 PM

General Fund (10)

	<u>Elementary</u>	<u>Secondary</u>	<u>Federal</u>	<u>Total</u>
2840 Data Processing Services				
300 <u>Purchased Professional and Technical Services</u>				
340 Technical Services				315.26
Total Purchased Professional and Technical Services				\$315.26
600 <u>Supplies</u>				
650 Supplies & Fees – Technology Related				46,422.00
Total Supplies				\$46,422.00
Total 2840 Data Processing Services				\$46,737.26

General Fund (10)

2850 State and Federal Agency Liaison Services

Elementary

Secondary

Federal

Total

500 Other Purchased Services

580 Travel

1,092.37

1,092.37

Total Other Purchased Services

\$1,092.37

\$1,092.37

600 Supplies

610 General Supplies

1,511.55

1,511.55

Total Supplies

\$1,511.55

\$1,511.55

Total 2850 State and Federal Agency Liaison Services

\$2,603.92

\$2,603.92

General Fund (10)

3000 Operation of Non-Instructional Services	<u>Total</u>
100 Personnel Services – Salaries	
100 Personnel Services – Salaries	304,245.96
Total Personnel Services – Salaries	\$304,245.96
200 Personnel Services – Employee Benefits	
220 Social Security Contributions	23,115.23
230 PSERS Retirement Contributions	84,836.24
250 Unemployment Compensation	922.70
260 Workers' Compensation	1,673.49
Total Personnel Services – Employee Benefits	\$110,547.66
300 Purchased Professional and Technical Services	
330 Other Professional Services	25,448.92
390 Other Purchased Professional and Technical Services	45,819.50
Total Purchased Professional and Technical Services	\$71,268.42
400 Purchased Property Services	
430 Repairs and Maintenance Services	1,887.75
Total Purchased Property Services	\$1,887.75
500 Other Purchased Services	
510 Student Transportation Services	100,330.00
530 Communications	580.38
580 Travel	4,818.70
Total Other Purchased Services	\$105,729.08
600 Supplies	
610 General Supplies	78,261.32
Total Supplies	\$78,261.32
700 Property	
752 Capital Equipment – Original and Additional	2,354.86
756 Capitalized Technology Equipment – Original	1,500.00
762 Capitalized Equipment - Replacement	5,487.50
Total Property	\$9,342.36
800 Other Objects	
810 Dues and Fees	7,315.00
Total Other Objects	\$7,315.00
Total 3000 Operation of Non-Instructional Services	\$688,597.55

General Fund (10)

3200 Student Activities

Elementary

Secondary

Federal

Total

100 Personnel Services – Salaries

100 Personnel Services – Salaries

298,703.96

Total Personnel Services – Salaries

\$298,703.96

200 Personnel Services – Employee Benefits

220 Social Security Contributions

22,690.99

230 PSERS Retirement Contributions

82,983.57

250 Unemployment Compensation

910.40

260 Workers' Compensation

1,643.13

Total Personnel Services – Employee Benefits

\$108,228.09

300 Purchased Professional and Technical Services

330 Other Professional Services

25,448.92

390 Other Purchased Professional and Technical Services

45,819.50

Total Purchased Professional and Technical Services

\$71,268.42

400 Purchased Property Services

430 Repairs and Maintenance Services

1,887.75

Total Purchased Property Services

\$1,887.75

500 Other Purchased Services

510 Student Transportation Services

100,330.00

580 Travel

4,818.70

Total Other Purchased Services

\$105,148.70

600 Supplies

610 General Supplies

68,560.32

Total Supplies

\$68,560.32

700 Property

752 Capital Equipment – Original and Additional

2,354.86

756 Capitalized Technology Equipment – Original

1,500.00

762 Capitalized Equipment - Replacement

5,487.50

Total Property

\$9,342.36

800 Other Objects

810 Dues and Fees

7,315.00

Total Other Objects

\$7,315.00

Total 3200 Student Activities

\$670,454.60

General Fund (10)

	<u>Elementary</u>	<u>Secondary</u>	<u>Federal</u>	<u>Total</u>
3300 Community Services				
100 Personnel Services – Salaries				
100 Personnel Services – Salaries				5,542.00
Total Personnel Services – Salaries				\$5,542.00
200 Personnel Services – Employee Benefits				
220 Social Security Contributions				424.24
230 PSERS Retirement Contributions				1,852.67
250 Unemployment Compensation				12.30
260 Workers' Compensation				30.36
Total Personnel Services – Employee Benefits				\$2,319.57
500 Other Purchased Services				
530 Communications				580.38
Total Other Purchased Services				\$580.38
600 Supplies				
610 General Supplies			6,396.31	9,701.00
Total Supplies			\$6,396.31	\$9,701.00
Total 3300 Community Services			\$6,396.31	\$18,142.95

General Fund (10)

4000 Facilities Acquisition, Construction and Improvement Services

Total

400 Purchased Property Services

430 Repairs and Maintenance Services

42,113.00

Total Purchased Property Services

\$42,113.00

Total 4000 Facilities Acquisition, Construction and Improvement Services

\$42,113.00

LEA : 117596003 Northern Tioga SD

Printed 2/3/2020 3:04:54 PM

General Fund (10)

	<u>Elementary</u>	<u>Secondary</u>	<u>Federal</u>	<u>Total</u>
4600 Existing Building Improvement Services				
400 <u>Purchased Property Services</u>				
430 Repairs and Maintenance Services				42,113.00
Total Purchased Property Services				\$42,113.00
Total 4600 Existing Building Improvement Services				\$42,113.00

General Fund (10)

5000 Other Expenditures and Financing Uses

Total

800 Other Objects

830 Interest	869,790.00
880 Refunds of Prior Years' Receipts	23,606.00

Total Other Objects	\$893,396.00
----------------------------	---------------------

900 Other Uses of Funds

910 Redemption of Principal	694,000.00
932 Capital Reserve Fund Transfers Applicable To Fund 32	500,000.00
939 Other Fund Transfers	28,079.05

Total Other Uses of Funds	\$1,222,079.05
----------------------------------	-----------------------

Total 5000 Other Expenditures and Financing Uses	\$2,115,475.05
---	-----------------------

General Fund (10)

	<u>Elementary</u>	<u>Secondary</u>	<u>Federal</u>	<u>Total</u>
5100 Debt Service / Other Expenditures and Financing Uses				
800 Other Objects				
830 Interest				869,790.00
880 Refunds of Prior Years' Receipts			23,606.00	23,606.00
Total Other Objects			\$23,606.00	\$893,396.00
900 Other Uses of Funds				
910 Redemption of Principal				694,000.00
Total Other Uses of Funds				\$694,000.00
Total 5100 Debt Service / Other Expenditures and Financing Uses			\$23,606.00	\$1,587,396.00

LEA : 117596003 Northern Tioga SD

Printed 2/3/2020 3:05:02 PM

General Fund (10)

	<u>Elementary</u>	<u>Secondary</u>	<u>Federal</u>	<u>Total</u>
5110 Debt Service				
800 Other Objects				
830 Interest				869,790.00
Total Other Objects				\$869,790.00
900 Other Uses of Funds				
910 Redemption of Principal				694,000.00
Total Other Uses of Funds				\$694,000.00
Total 5110 Debt Service				\$1,563,790.00

General Fund (10)

5130 Refund of Prior Year Revenues / Receipts

Elementary

Secondary

Federal

Total

800 Other Objects

880 Refunds of Prior Years' Receipts

23,606.00

23,606.00

Total Other Objects

\$23,606.00

\$23,606.00

Total 5130 Refund of Prior Year Revenues / Receipts

\$23,606.00

\$23,606.00

LEA : 117596003 Northern Tioga SD

Printed 2/3/2020 3:05:02 PM

General Fund (10)

5200 Interfund Transfers – Out

Elementary

Secondary

Federal

Total

900 Other Uses of Funds

932 Capital Reserve Fund Transfers Applicable To Fund 32

500,000.00

939 Other Fund Transfers

28,079.05

Total Other Uses of Funds

\$528,079.05

Total 5200 Interfund Transfers – Out

\$528,079.05

LEA : 117596003 Northern Tioga SD

Printed 2/3/2020 3:05:02 PM

General Fund (10)

5230 Capital Projects Fund Transfers

Elementary

Secondary

Federal

Total

900 Other Uses of Funds

932 Capital Reserve Fund Transfers Applicable To Fund 32

500,000.00

Total Other Uses of Funds

\$500,000.00

Total 5230 Capital Projects Fund Transfers

\$500,000.00

LEA : 117596003 Northern Tioga SD

Printed 2/3/2020 3:05:02 PM

General Fund (10)

	<u>Elementary</u>	<u>Secondary</u>	<u>Federal</u>	<u>Total</u>
5250 Enterprise Fund Transfers				
900 Other Uses of Funds				
939 Other Fund Transfers				4,079.05
Total Other Uses of Funds				\$4,079.05
Total 5250 Enterprise Fund Transfers				\$4,079.05

LEA : 117596003 Northern Tioga SD

Printed 2/3/2020 3:05:02 PM

General Fund (10)

5280 Activity Fund Transfers

Elementary

Secondary

Federal

Total

900 Other Uses of Funds

939 Other Fund Transfers

24,000.00

Total Other Uses of Funds

\$24,000.00

Total 5280 Activity Fund Transfers

\$24,000.00

LEA : 117596003 Northern Tioga SD

Printed 2/3/2020 3:04:46 PM

Capital Reserve Fund - § 1431 (32)

2000 Support Services

300 Purchased Professional and Technical Services

310 Official / Administrative Services

Total Purchased Professional and Technical Services

Total 2000 Support Services

Total

5,998.30

\$5,998.30

\$5,998.30

LEA : 117596003 Northern Tioga SD

Printed 2/3/2020 3:04:46 PM

Capital Reserve Fund - § 1431 (32)

2300 Support Services – Administration

Elementary

Secondary

Federal

Total

300 Purchased Professional and Technical Services

310 Official / Administrative Services

5,998.30

Total Purchased Professional and Technical Services

\$5,998.30

Total 2300 Support Services – Administration

\$5,998.30

LEA : 117596003 Northern Tioga SD

Printed 2/3/2020 3:04:46 PM

Capital Reserve Fund - § 1431 (32)

2390 Other Administration Services

Elementary

Secondary

Federal

Total

300 Purchased Professional and Technical Services

310 Official / Administrative Services

5,998.30

Total Purchased Professional and Technical Services

\$5,998.30

Total 2390 Other Administration Services

\$5,998.30

LEA : 117596003 Northern Tioga SD

Printed 2/3/2020 3:04:57 PM

Capital Reserve Fund - § 1431 (32)

4000 Facilities Acquisition, Construction and Improvement Services

Total

400 Purchased Property Services

450 Construction Services

11,967.00

Total Purchased Property Services

\$11,967.00

Total 4000 Facilities Acquisition, Construction and Improvement Services

\$11,967.00

LEA : 117596003 Northern Tioga SD

Printed 2/3/2020 3:04:57 PM

Capital Reserve Fund - § 1431 (32)

4600 Existing Building Improvement Services

Elementary

Secondary

Federal

Total

400 Purchased Property Services

450 Construction Services

11,967.00

Total Purchased Property Services

\$11,967.00

Total 4600 Existing Building Improvement Services

\$11,967.00

LEA : 117596003 Northern Tioga SD

Printed 2/3/2020 3:05:03 PM

Capital Reserve Fund - § 1431 (32)

5000 Other Expenditures and Financing Uses

Total

900 Other Uses of Funds

910 Redemption of Principal

186,000.00

Total Other Uses of Funds

\$186,000.00

Total 5000 Other Expenditures and Financing Uses

\$186,000.00

LEA : 117596003 Northern Tioga SD

Printed 2/3/2020 3:05:03 PM

Capital Reserve Fund - § 1431 (32)

5100 Debt Service / Other Expenditures and Financing Uses

Elementary

Secondary

Federal

Total

900 Other Uses of Funds

910 Redemption of Principal

186,000.00

Total Other Uses of Funds

\$186,000.00

Total 5100 Debt Service / Other Expenditures and Financing Uses

\$186,000.00

LEA : 117596003 Northern Tioga SD

Printed 2/3/2020 3:05:03 PM

Capital Reserve Fund - § 1431 (32)

5110 Debt Service

Elementary

Secondary

Federal

Total

900 Other Uses of Funds

910 Redemption of Principal

186,000.00

Total Other Uses of Funds

\$186,000.00

Total 5110 Debt Service

\$186,000.00

LEA : 117596003 Northern Tioga SD

Printed 2/3/2020 3:04:47 PM

Other Capital Projects Fund (39)

2000 Support Services

300 Purchased Professional and Technical Services

310 Official / Administrative Services

Total

12,390.98

Total Purchased Professional and Technical Services

\$12,390.98

Total 2000 Support Services

\$12,390.98

LEA : 117596003 Northern Tioga SD

Printed 2/3/2020 3:04:47 PM

Other Capital Projects Fund (39)

2300 Support Services – Administration

Elementary

Secondary

Federal

Total

300 Purchased Professional and Technical Services

310 Official / Administrative Services

12,390.98

Total Purchased Professional and Technical Services

\$12,390.98

Total 2300 Support Services – Administration

\$12,390.98

LEA : 117596003 Northern Tioga SD

Printed 2/3/2020 3:04:47 PM

Other Capital Projects Fund (39)

2390 Other Administration Services

Elementary

Secondary

Federal

Total

300 Purchased Professional and Technical Services

310 Official / Administrative Services

12,390.98

Total Purchased Professional and Technical Services

\$12,390.98

Total 2390 Other Administration Services

\$12,390.98

Other Capital Projects Fund (39)

4000 Facilities Acquisition, Construction and Improvement Services

Total

300 Purchased Professional and Technical Services

330 Other Professional Services 11,127,902.80

Total Purchased Professional and Technical Services \$11,127,902.80

400 Purchased Property Services

430 Repairs and Maintenance Services 513,924.00

Total Purchased Property Services \$513,924.00

500 Other Purchased Services

520 Insurance – General 15,159.00

Total Other Purchased Services \$15,159.00

600 Supplies

610 General Supplies 52,764.44

Total Supplies \$52,764.44

700 Property

752 Capital Equipment – Original and Additional 94,351.50

Total Property \$94,351.50

Total 4000 Facilities Acquisition, Construction and Improvement Services \$11,804,101.74

Other Capital Projects Fund (39)

4600 Existing Building Improvement Services

Elementary

Secondary

Federal

Total

300 Purchased Professional and Technical Services

330 Other Professional Services

11,127,902.80

Total Purchased Professional and Technical Services

\$11,127,902.80

400 Purchased Property Services

430 Repairs and Maintenance Services

513,924.00

Total Purchased Property Services

\$513,924.00

500 Other Purchased Services

520 Insurance – General

15,159.00

Total Other Purchased Services

\$15,159.00

600 Supplies

610 General Supplies

52,764.44

Total Supplies

\$52,764.44

700 Property

752 Capital Equipment – Original and Additional

94,351.50

Total Property

\$94,351.50

Total 4600 Existing Building Improvement Services

\$11,804,101.74

	<u>General Fund(10)</u>	<u>Public Purpose Trust(27)</u>	<u>Other Compt Approved (28)</u>	<u>Athletic / Activity(29)</u>	<u>Capital Reserve (690. 1850)(31)</u>
1000 Instruction					
1100 Regular Programs - Elementary / Secondary	15,059,882.98				
1200 Special Programs - Elementary / Secondary	5,100,554.79				
1300 Vocational Education	232,869.99				
1400 Other Instructional Programs - Elementary / Secondary	135,009.51				
1800 Pre-Kindergarten	383,425.15				
Total Instruction	\$20,911,742.42				
2000 Support Services					
2100 Support Services - Students	1,035,797.94				
2200 Support Services - Instructional Staff	1,401,635.43				
2300 Support Services - Administration	1,782,107.31				
2400 Support Services - Pupil Health	304,376.35				
2500 Support Services - Business	349,852.18				
2600 Operation and Maintenance of Plant Services	2,508,975.18				
2700 Student Transportation Services	2,054,845.45				
2800 Support Services - Central	72,901.86				
Total Support Services	\$9,510,491.70				
3000 Operation of Non-Instructional Services					
3200 Student Activities	670,454.60				
3300 Community Services	18,142.95				
Total Operation of Non-Instructional Services	\$688,597.55				
4000 Facilities Acquisition, Construction and Improvement Services					
4600 Existing Building Improvement Services	42,113.00				
Total Facilities Acquisition, Construction and Improvement	\$42,113.00				
5000 Other Expenditures and Financing Uses					
5100 Debt Service / Other Expenditures and Financing Uses	1,587,396.00				
5200 Interfund Transfers - Out	528,079.05				
Total Other Expenditures and Financing Uses	\$2,115,475.05				
TOTAL ACTUAL EXPENDITURES & OTHER FINANCING USES	\$33,268,419.72				

LEA : 117596003 Northern Tioga SD

Printed 2/3/2020 3:05:15 PM

	<u>Capital Reserve (1431)(32)</u>	<u>Other Capital Projects Fund(39)</u>	<u>Debt Service(40)</u>	<u>Permanent(90)</u>	<u>Total</u>
1000 Instruction					
1100 Regular Programs - Elementary / Secondary					15,059,882.98
1200 Special Programs - Elementary / Secondary					5,100,554.79
1300 Vocational Education					232,869.99
1400 Other Instructional Programs - Elementary / Secondary					135,009.51
1800 Pre-Kindergarten					383,425.15
Total Instruction					\$20,911,742.42
2000 Support Services					
2100 Support Services - Students					1,035,797.94
2200 Support Services - Instructional Staff					1,401,635.43
2300 Support Services - Administration	5,998.30	12,390.98			1,800,496.59
2400 Support Services - Pupil Health					304,376.35
2500 Support Services - Business					349,852.18
2600 Operation and Maintenance of Plant Services					2,508,975.18
2700 Student Transportation Services					2,054,845.45
2800 Support Services - Central					72,901.86
Total Support Services	\$5,998.30	\$12,390.98			\$9,528,880.98
3000 Operation of Non-Instructional Services					
3200 Student Activities					670,454.60
3300 Community Services					18,142.95
Total Operation of Non-Instructional Services					\$688,597.55
4000 Facilities Acquisition, Construction and Improvement Services					
4600 Existing Building Improvement Services	11,967.00	11,804,101.74			11,858,181.74
Total Facilities Acquisition, Construction and Improvement	\$11,967.00	\$11,804,101.74			\$11,858,181.74
5000 Other Expenditures and Financing Uses					
5100 Debt Service / Other Expenditures and Financing Uses	186,000.00				1,773,396.00
5200 Interfund Transfers - Out					528,079.05
Total Other Expenditures and Financing Uses	\$186,000.00				\$2,301,475.05
TOTAL ACTUAL EXPENDITURES & OTHER FINANCING USES	\$203,965.30	\$11,816,492.72			\$45,288,877.74

LEA : 117596003 Northern Tioga SD

Printed 2/3/2020 3:05:22 PM

PSERS Salary Data (Salary Data should relate to the General Fund only)

Amount Description	Amount
Total Salary Base for salaries subject to PSERS withholding	14,111,418.23
Total Federally Funded salaries subject to PSERS withholding	764,263.66
	<hr/>

Title I Expenditure Data

Amount Description	Amount
Expenditures Funded with Current Title I Funds	508,672.37
Expenditures Funded with Carry over Title I Funds	100,457.97
	<hr/>
Total Title I Expenditure Data	\$609,130.34
	<hr/>

Benefits for Staff Relative to Collective Bargaining Agreements

	OBJECT	COVERED	NOT COVERED	TOTAL
10 General Fund	No Self Insurance data to report			
	211 Medical Insurance	3,872,804.68	171,908.21	4,044,712.89
	212 Dental Insurance	182,362.39	20,940.16	203,302.55
	215 Eye Care Insurance			
	216 Prescription Insurance			
	271 Self-Insurance Medical Benefits			
	272 Self-Insurance Dental Benefits			
	275 Self-Insurance Eye Care Benefits			
	276 Self-Insurance Prescription Benefits			
	FUND TOTAL		\$4,055,167.07	\$192,848.37
50 Enterprise Fund	No Self Insurance data to report			
	211 Medical Insurance	132,481.58	82,935.63	215,417.21
	212 Dental Insurance	3,853.03	2,412.03	6,265.06
	215 Eye Care Insurance			
	216 Prescription Insurance			
	271 Self-Insurance Medical Benefits			
	272 Self-Insurance Dental Benefits			
	275 Self-Insurance Eye Care Benefits			
	276 Self-Insurance Prescription Benefits			
	FUND TOTAL		\$136,334.61	\$85,347.66
60 Internal Service Fund	No Self Insurance data to report			
	211 Medical Insurance			
	212 Dental Insurance			
	215 Eye Care Insurance			
	216 Prescription Insurance			
	271 Self-Insurance Medical Benefits			
	272 Self-Insurance Dental Benefits			
	275 Self-Insurance Eye Care Benefits			
	276 Self-Insurance Prescription Benefits			
	FUND TOTAL			
Total of All Funds		\$4,191,501.68	\$278,196.03	\$4,469,697.71

LEA : 117596003 Northern Tioga SD

Printed 2/3/2020 3:05:27 PM

Function	Special Education (Prior Year)	Nonspecial Education (Prior Year)	Total (Prior Year)	Special Education (Current Year)	Nonspecial Education (Current Year)	Total (Current Year)
2120 Guidance Services	84,249.91	419,172.15	503,422.06	92,074.00	456,344.89	548,418.89
2140 Psychological Services	165,366.50	13,408.10	178,774.60	170,772.19	13,846.39	184,618.58
2150 Speech Pathology and Audiology Services						
2160 Social Work Services	263,741.10	21,384.41	285,125.51	273,455.41	22,172.06	295,627.47
2260 Instruction and Curriculum Development Services	271,861.45	239,301.36	511,162.81	270,060.98	229,491.40	499,552.38
2350 Legal and Accounting Services	4,215.65	20,974.29	25,189.94	7,728.54	38,304.83	46,033.37
2420 Medical Services						
2440 Nursing Services	51,941.95	258,429.01	310,370.96	51,101.72	253,274.63	304,376.35
2700 Student Transportation Services	356,419.80	1,642,166.25	1,998,586.05	396,011.77	1,658,833.68	2,054,845.45
Total	\$1,197,796.36	\$2,614,835.57	\$3,812,631.93	\$1,261,204.61	\$2,672,267.88	\$3,933,472.49

(PRINCIPAL AMOUNTS ONLY)

GOVERNMENTAL FUNDS/ ACTIVITIES

	Short-Term Borrowing	General Obligation Bonds/Notes	Authority Building Obligations	Other Long-Term Debt	Other Post-Employment Benefits (OPEB)	Compensated Absences	Net Pension Liability	Total
1. Debt at Beginning of Fiscal Year		23,445,000.00			5,028,199.00	242,276.43	53,982,000.00	82,697,475.43
2. Additional Debt Incurred During Year					268,131.00	92,282.55	3,486,089.00	3,846,502.55
3. Retirements and Repayments		880,000.00			253,990.00	3,828.48	4,663,089.00	5,800,907.48
4. Debt at End of Fiscal Year		22,565,000.00			5,042,340.00	330,730.50	52,805,000.00	80,743,070.50
5. Accreted Interest at End Of Fiscal Year								
6. Total Debt and Accreted Interest		22,565,000.00			5,042,340.00	330,730.50	52,805,000.00	80,743,070.50
7. Current Portion P&I - Due within 1 year		1,776,912.00						1,776,912.00
8. Interest Paid during current fiscal year		869,790.00						869,790.00

(PRINCIPAL AMOUNTS ONLY)

PROPRIETARY FUNDS

	Short-Term Borrowing	General Obligation Bonds/Notes	Authority Building Obligations	Other Long-Term Debt	Other Post-Employment Benefits (OPEB)	Compensated Absences	Net Pension Liability	Total
1. Debt at Beginning of Fiscal Year						7,268.28		7,268.28
2. Additional Debt Incurred During Year								
3. Retirements and Repayments						756.70		756.70
4. Debt at End of Fiscal Year						6,511.58		6,511.58
5. Accreted Interest at End Of Fiscal Year								
6. Total Debt and Accreted Interest						6,511.58		6,511.58
7. Current Portion P&I - Due within 1 year								
8. Interest Paid during current fiscal year								

Total Principal and Interest Payments Made by Your School - All Funds

Function	Fund		Principal (910)	Principal (920)	Interest (830)	Total (Principal +Interest)	Misc Other Uses (990)
5110	10	General Fund	694,000.00		869,790.00	1,563,790.00	
5110	20	Special Revenue Funds					
5110	30	Capital Projects Funds	186,000.00			186,000.00	
5110	40	Debt Service Fund					
5110	90	Permanent Fund					
5120	10	General Fund					
5120	20	Special Revenue Funds					
5120	30	Capital Projects Funds					
5120	40	Debt Service Fund					

Total Debt Payments - Governmental Funds			\$880,000.00		\$869,790.00	\$1,749,790.00	
---	--	--	---------------------	--	---------------------	-----------------------	--

Function	Fund		Principal (910)	Principal (920)	Interest (830)	Total (Principal +Interest)
5110	50	Enterprise Fund				
5110	60	Internal Service Fund				
5120	50	Enterprise Fund				
5120	60	Internal Service Fund				

Total Debt Payments - Proprietary Funds						
--	--	--	--	--	--	--

Debt Details
Governmental Funds/ Activities

Debt Category	Debt Issue Date (MM/YYYY)	Principal Amounts Only				Current Portion Due Within One Year (Principal and Interest)	Interest Paid During Fiscal Year
		Debt at Beginning of Fiscal Year	Additions	Reductions / Repayments	Debt at End of Fiscal Year		
General Obligation Bonds/Notes – CIB	7/2017	18,590,000.00		325,000.00	18,265,000.00	1,084,700.00	731,200.00
General Obligation Bonds/Notes – CIB	7/2017	4,855,000.00		555,000.00	4,300,000.00	692,212.00	138,590.00
Compensated Absences		242,276.43	92,282.55	3,828.48	330,730.50		
Other Post-Employment Benefits (OPEB)		5,028,199.00	268,131.00	253,990.00	5,042,340.00		
Net Pension Liability		53,982,000.00	3,486,089.00	4,663,089.00	52,805,000.00		
Totals for Debt Entered:		\$82,697,475.43	\$3,846,502.55	\$5,800,907.48	\$80,743,070.50	\$1,776,912.00	\$869,790.00

Bond Details
Proprietary Funds

Debt Category	Debt Issue Date (MM/YYYY)	Principal Amounts Only				Current Portion Due Within One Year (Principal and Interest)	Interest Paid During Fiscal Year
		Debt at Beginning of Fiscal Year	Additions	Reductions / Repayments	Debt at End of Fiscal Year		
Compensated Absences		7,268.28		756.70	6,511.58		
Totals for Debt Entered:		\$7,268.28		\$756.70	\$6,511.58		

General Fund (10)

Section 1: Tuition/Purchased Services as Reported within Expenditure Detail

	Amount
Tuition Reported in General Fund Expenditures 1000-560	798,443.63
Purchased Services in General Fund Expenditures 1000-594 and 1000-597	

Section 1 Total	\$798,443.63
------------------------	---------------------

Section 2: Tuition Paid to Institution Types During Fiscal Year

	Tuition Paid For Nonspecial Education	Tuition Paid For Special Education	Total
1 1306 Institutions			
2 Institutionalized Children's Programs	18,062.12	2,503.50	20,565.62
3 Juveniles Incarcerated in Adult Facilities			
4 Residential Treatment Facilities	39,388.91		39,388.91
5 Other Local Education Agencies	67,730.14	22,618.00	90,348.14
6 Brick and Mortar Charter Schools			
7 Cyber Charter Schools	236,379.43	277,488.90	513,868.33
8 Career and Technology Centers			
9 Approved Private Schools		14,316.47	14,316.47
10 PA Chartered Schools for the Deaf and Blind			
11 Private Residential Rehabilitative Institutions			
12 Juvenile Detention Centers			
13 Special Program Jointures		63,614.00	63,614.00
14 Other Tuition Not Included Elsewhere In This Section	56,342.16		56,342.16
Section 2 Total	\$417,902.76	\$380,540.87	\$798,443.63

LEA : 117596003 Northern Tioga SD

Printed 2/3/2020 3:05:34 PM

Food Service / Cafeteria Operations Fund (51)

3000 Operation of Non-Instructional Services

Total

100 Personnel Services – Salaries

100 Personnel Services – Salaries 496,192.00

Total Personnel Services – Salaries \$496,192.00

200 Personnel Services – Employee Benefits

210 Group Insurance – Contracted Provider 222,785.00

220 Social Security Contributions 36,042.00

230 PSERS Retirement Contributions 155,445.00

250 Unemployment Compensation 2,843.00

260 Workers' Compensation 2,694.00

Total Personnel Services – Employee Benefits \$419,809.00

300 Purchased Professional and Technical Services

340 Technical Services 2,832.00

Total Purchased Professional and Technical Services \$2,832.00

400 Purchased Property Services

430 Repairs and Maintenance Services 9,829.00

Total Purchased Property Services \$9,829.00

500 Other Purchased Services

580 Travel 5,345.00

Total Other Purchased Services \$5,345.00

600 Supplies

610 General Supplies 36,094.00

630 Food 594,182.00

Total Supplies \$630,276.00

700 Property

740 Depreciation 17,764.00

Total Property \$17,764.00

Total 3000 Operation of Non-Instructional Services \$1,582,047.00

Food Service / Cafeteria Operations Fund (51)

3100 Food Services

Elementary

Secondary

Federal

Total

100 Personnel Services – Salaries

100 Personnel Services – Salaries

496,192.00

Total Personnel Services – Salaries

\$496,192.00

200 Personnel Services – Employee Benefits

210 Group Insurance – Contracted Provider

222,785.00

220 Social Security Contributions

36,042.00

230 PSERS Retirement Contributions

155,445.00

250 Unemployment Compensation

2,843.00

260 Workers' Compensation

2,694.00

Total Personnel Services – Employee Benefits

\$419,809.00

300 Purchased Professional and Technical Services

340 Technical Services

2,832.00

Total Purchased Professional and Technical Services

\$2,832.00

400 Purchased Property Services

430 Repairs and Maintenance Services

9,829.00

Total Purchased Property Services

\$9,829.00

500 Other Purchased Services

580 Travel

5,345.00

Total Other Purchased Services

\$5,345.00

600 Supplies

610 General Supplies

36,094.00

630 Food

594,182.00

Total Supplies

\$630,276.00

700 Property

740 Depreciation

17,764.00

Total Property

\$17,764.00

Total 3100 Food Services

\$1,582,047.00

	<u>Food Service(51)</u>	<u>Child Care Operations(52)</u>	<u>Other Enterprise(58)</u>	<u>Internal Service(60)</u>	<u>Total</u>
3000 <u>Operation of Non-Instructional Services</u>					
3100 Food Services	1,582,047.00				1,582,047.00
Total Operation of Non-Instructional Services	\$1,582,047.00				\$1,582,047.00
TOTAL ACTUAL EXPENDITURES & OTHER FINANCING USES	\$1,582,047.00				\$1,582,047.00

LEA : 117596003 Northern Tioga SD

Printed 2/3/2020 3:05:44 PM

Fund	School	School Number	Local Personnel	Local Nonpersonnel	State Personnel	State Nonpersonnel	Federal Personnel	Federal Nonpersonnel	Total	Explanation
10										
	Clark Wood El Sch	6371	1,494,905.98	322,706.38	2,502,168.82	560,230.44	442,486.88	9,786.98	5,332,285.48	
	Cowanesque Valley JSHS	4058	1,855,041.18	381,265.96	3,104,961.97	658,247.30	31,436.28	10,753.16	6,041,705.85	
	Russell B Walter El Sch	4060	1,600,092.75	304,248.00	2,678,230.11	529,334.88	457,342.87	8,735.99	5,577,984.60	
	Westfield Area El Sch	4057	1,420,423.95	292,256.96	2,377,501.16	509,264.34	453,057.46	4,906.32	5,057,410.19	
	Williamson SHS	6373	2,516,302.07	409,919.01	4,211,777.83	706,206.70	30,364.12	312.18	7,874,881.91	
Total			8,886,765.93	1,710,396.31	14,874,639.89	2,963,283.66	1,414,687.61	34,494.63	29,884,268.03	