

LEA Name : Northern Tioga SD
Address : 110 Ellison Road
Eikland , PA 16920

County : Tioga
AUN Number : 117596003
LEA Type : SD

Annual Financial Report Accuracy Certification Statement

For Fiscal Year Ending
6/30/2017

Pennsylvania Department of Education

&

Office of Comptroller Operations


PDE-2056: Intermediate Unit

PDE-2057: School District, AVTS/CTC, Charter School,
and Special Program Jointure

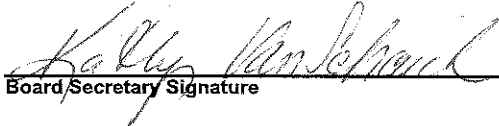
CERTIFICATION: By signing this page I agree that the electronic data submitted is a complete and accurate statement of the financial operations and status of the local education agency for the fiscal year. It has been prepared in accordance with generally accepted accounting principles and established Commonwealth of PA reporting guidelines.



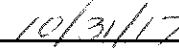
Chief School Administrator Signature



Date



Board/Secretary Signature



Date

Wanda M Erb

Contact Person

wanda.erb@ntiogasd.org

Contact Person E-mail Address

(814)258-5644

Ext :1020

Contact Person Telephone Number

Contact Person Fax Number

Audit Certification
Annual Financial Report:
For Fiscal Year Ending **6/30/2017**
(Pursuant to PA School Code Section 218(b))

LEA Name : Northern Tioga SD
AUN Number : 117596003
County : Tioga

Audit Certification Due: 12/31/2017

This certification is applicable to the Annual Financial Report data submitted through the Consolidated Financial Reporting System on: October 31, 2017

Date

Auditing Firm: Zelenkofske Axelrod LLC
830 Sir Thomas Court, Suite 100
Harrisburg, PA 17109

Auditor Contact Name: Kimberly Stank, CPA, CGMA

Auditor Phone: 717-561-9200 Ext. 5016

Auditor E-mail: kstank@zallc.org

CERTIFICATION: By signing this page I agree that the financial statements of the school have been properly audited as noted above pursuant to Article XXIV, and in the auditor's professional opinion, the Annual Financial Report (PDE-2057) submitted on the date referenced is materially consistent with the audited financial statements.

Chief School Administrator

Wanda M Erb
Signature

12-7-17
Date

Board Secretary

Kathy Van Schaik
Signature

12/7/2017
Date

Wanda M Erb

Contact Person

wanda.erb@ntiogasd.org

Contact Person E-mail Address

(814)258-5644

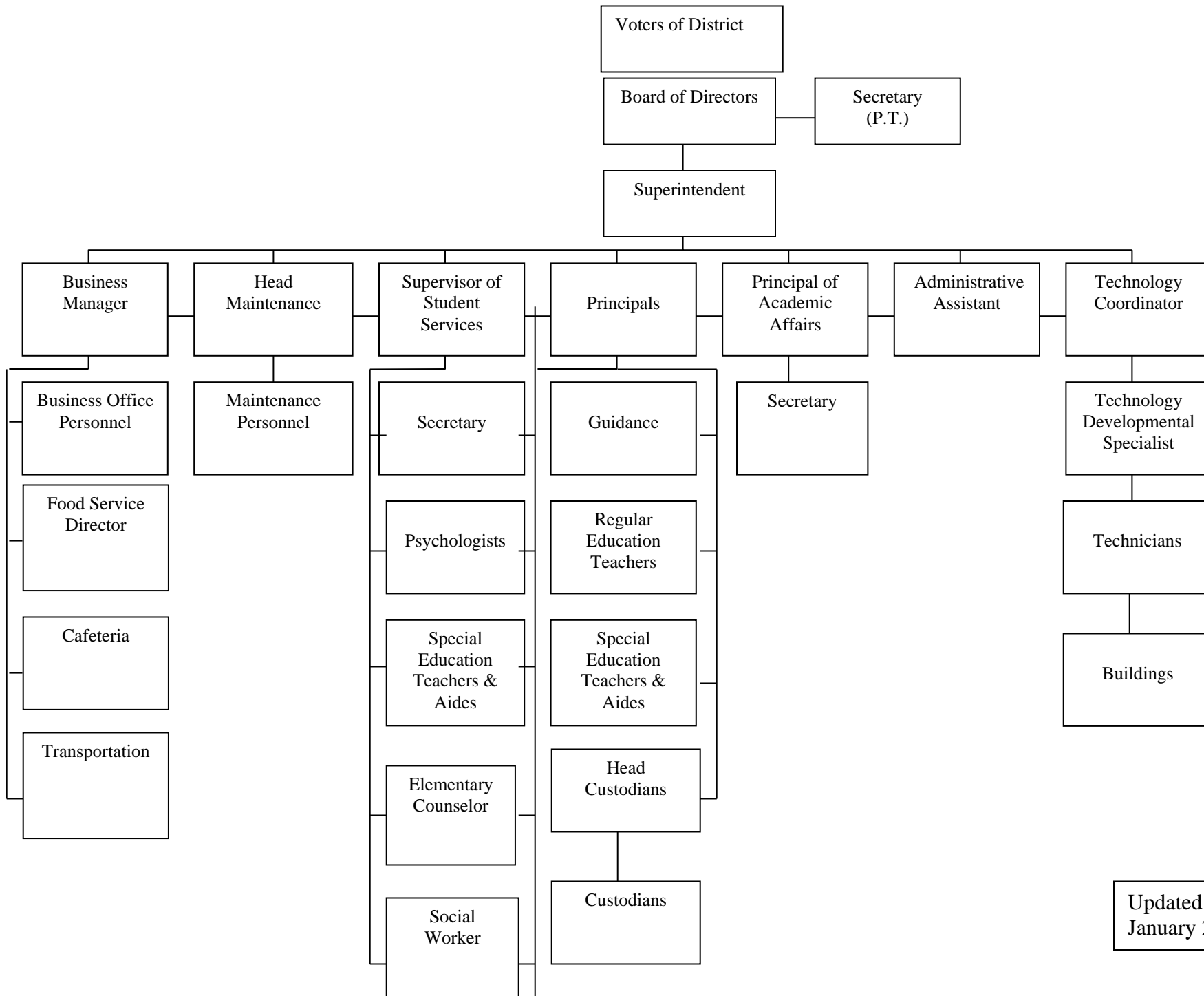
Ext :1020

Contact Person Telephone Number

(814) 258-7876

Contact Person Fax Number

NORTHERN TIOGA SCHOOL DISTRICT



Updated
January 2014

<u>Val Number</u>	<u>Description</u>	<u>Justification</u>
41660	Expenditure Detail, Salaries (Object 100) and Benefits (Object 200 series): Amounts must be entered for both Salaries and Benefits. Function 2800, Object 100: \$0.00 Function 2800, Object 200: \$7,689.00	Tuition reimbursement for administrators and other support professional employees are coded to the 2834 function, 240 object code.
50450	SESS - 2350 Legal and Accounting Services: SESS Schedule amounts for Special Education vary from prior year by 40% or more. Correct the data or enter a justification. SESS Schedule 2350: \$3,594.83 Prior Year SESS Schedule 2350: \$17,803.34	We did not have any issues where we hired special counsel for a special education issue.
60074	ICR - Proprietary Expense Detail: Entries in Fund 51 and Object 400 must be less than or equal to Statement of Revenues, Expenses, and Changes in Net Position (REP) Prop Exp Dtl: Fund 51, Object 400: \$17,441.13 REP: Fund 51, Object 400: \$17,441.00	Rounding Required on REP
60075	ICR - Proprietary Expense Detail: Entries in Fund 51 and Object 500 must be less than or equal to Statement of Revenues, Expenses, and Changes in Net Position (REP) Prop Exp Dtl: Fund 51, Object 500: \$6,979.41 REP: Fund 51, Object 500: \$6,979.00	Rounding Required on REP
60077	ICR - Proprietary Expense Detail: Entries in Fund 51 and Object 700 must be less than or equal to Statement of Revenues, Expenses, and Changes in Net Position (REP) Prop Exp Dtl: Fund 51, Object 700: \$12,381.37 REP: Fund 51, Object 700: \$12,381.00	Rounding Required on REP

Amounts Expressed in Whole Dollars

	<u>General Fund</u> <u>(10)</u>	<u>Public Purpose Trust</u> <u>(27)</u>	<u>Other Compt Approved</u> <u>(28)</u>	<u>Athletic / Activity</u> <u>(29)</u>	<u>Capital Reserve (690.</u> <u>1850)</u> <u>(31)</u>
Assets And Deferred Outflows Of Resources					
Assets					
0100 Cash and Cash Equivalents	6,343,316				
0110 Investments	4,062,579				
0120 Taxes Receivable	1,130,044				
0130 Due From Other Funds	185,215				
0141 Due From Other Governments					
0142 State Revenue Receivable	1,106,637				
0143 Federal Revenue Receivable	788,323				
0145 Other Intergovernmental Revenue Receivable					
0146 Due from Primary Government					
0147 Due from Component Unit					
0150 Other Receivables					
0170 Inventories					
0180 Prepaid Expenses (Expenditures)					
0190 Other Current Assets	27,750				
Total Assets	\$13,643,864				
0910 Deferred Outflows of Resources					
Total Assets And Deferred Outflows Of Resources	\$13,643,864				

Amounts Expressed in Whole Dollars

	<u>Capital Reserve (1431)</u> <u>(32)</u>	<u>Other Capital Projects</u> <u>Fund</u> <u>(39)</u>	<u>Debt Service</u> <u>(40)</u>	<u>Permanent</u> <u>(90)</u>	<u>Total Governmental</u> <u>Funds</u>
Assets And Deferred Outflows Of Resources					
Assets					
0100 Cash and Cash Equivalents		1,353,307			7,696,623
0110 Investments		5,233,121			9,295,700
0120 Taxes Receivable					1,130,044
0130 Due From Other Funds		209,043			394,258
0141 Due From Other Governments					
0142 State Revenue Receivable					1,106,637
0143 Federal Revenue Receivable					788,323
0145 Other Intergovernmental Revenue Receivable					
0146 Due from Primary Government					
0147 Due from Component Unit					
0150 Other Receivables					
0170 Inventories					
0180 Prepaid Expenses (Expenditures)					
0190 Other Current Assets					27,750
Total Assets		\$6,795,471			\$20,439,335
0910 Deferred Outflows of Resources					
Total Assets And Deferred Outflows Of Resources		\$6,795,471			\$20,439,335

Amounts Expressed in Whole Dollars

<u>General Fund</u>	<u>Public Purpose Trust</u>	<u>Other Compt Approved</u>	<u>Athletic / Activity</u>	<u>Capital Reserve (690.</u>
<u>(10)</u>	<u>(27)</u>	<u>(28)</u>	<u>(29)</u>	<u>1850)</u>
				<u>(31)</u>

Liabilities And Deferred Inflows Of Resources And Fund Balances

Liabilities

0400 Due to Other Funds	209,043
0411 Due to Other Governments	
0412 Due to Primary Government	
0413 Due to Component Unit	
0420 Accounts Payable	178,776
0430 Contracts Payable	
0440 Current Portion of Long-Term Debt	213,968
0450 Short-Term Payables	
0461 Accrued Salaries and Benefits	2,452,440
0462 Payroll Deductions and Withholding	1,320,809
0480 Unearned Revenues	
0490 Other Current Liabilities	

Total Liabilities	\$4,375,036
--------------------------	--------------------

0950 Deferred Inflows of Resources	1,004,295
------------------------------------	-----------

Fund Balances

0810 Nonspendable Fund Balance	
0820 Restricted Fund Balance	
0830 Committed Fund Balance	
0840 Assigned Fund Balance	5,950,234
0850 Unassigned Fund Balance	2,314,299

Total Fund Balances	\$8,264,533
----------------------------	--------------------

Total Liabilities, Deferred Inflows Of Resources And Fund Balances	\$13,643,864
---	---------------------

Amounts Expressed in Whole Dollars

	<u>Capital Reserve (1431)</u> <u>(32)</u>	<u>Other Capital Projects</u> <u>Fund</u> <u>(39)</u>	<u>Debt Service</u> <u>(40)</u>	<u>Permanent</u> <u>(90)</u>	<u>Total Governmental</u> <u>Funds</u>
Liabilities And Deferred Inflows Of Resources And Fund Balances					
Liabilities					
0400 Due to Other Funds					209,043
0411 Due to Other Governments					
0412 Due to Primary Government					
0413 Due to Component Unit					
0420 Accounts Payable	674,599				853,375
0430 Contracts Payable					
0440 Current Portion of Long-Term Debt					213,968
0450 Short-Term Payables					
0461 Accrued Salaries and Benefits					2,452,440
0462 Payroll Deductions and Withholding					1,320,809
0480 Unearned Revenues					
0490 Other Current Liabilities					
Total Liabilities	\$674,599				\$5,049,635
0950 Deferred Inflows of Resources					1,004,295
Fund Balances					
0810 Nonspendable Fund Balance					
0820 Restricted Fund Balance					
0830 Committed Fund Balance	6,120,872				6,120,872
0840 Assigned Fund Balance					5,950,234
0850 Unassigned Fund Balance					2,314,299
Total Fund Balances	\$6,120,872				\$14,385,405
Total Liabilities, Deferred Inflows Of Resources And Fund Balances	\$6,795,471				\$20,439,335

Amounts Expressed in Whole Dollars	<u>General Fund</u> <u>(10)</u>	<u>Public Purpose Trust</u> <u>(27)</u>	<u>Other Compt Approved</u> <u>(28)</u>	<u>Athletic / Activity</u> <u>(29)</u>	<u>Capital Reserve (690.</u> <u>1850)</u> <u>(31)</u>
Revenues					
6000 Revenue from Local Sources	11,471,386				
7000 Revenue from State Sources	21,507,898				
8000 Revenue from Federal Sources	1,013,570				
Total Revenues	\$33,992,854				
Expenditures					
1000 Instruction	19,558,601				
2000 Support Services	8,861,526				
3000 Operation of Non-Instructional Services	625,612				
4000 Facilities Acquisition, Construction and Improvement Services	522,956				
5110 Debt Service	2,027,500				
5130 Refund of Prior Year Revenues / Receipts					
Total Expenditures	\$31,596,195				
Excess (Deficiency) Of Revenues Over Expenditures	\$2,396,659				
Other Financing Sources (Uses)					
9110 Face Value of Bonds Issued					
9120 Proceeds from Refunding of Bonds					
9130 Bond Premiums					
9200 Proceeds from Extended-Term Financing					
9300 Interfund Transfers - IN					
9400 Sale of or Compensation for Loss of Fixed Assets					
9710 Transfers from Component Units					
9720 Transfers from Primary Governments					
9910 Other Financing Sources Not Listed in the 9000 Series					
9990 Insurance Recoveries					
5120 Debt Service – Refunded Bonds					
5150 Bond Discounts					
5200 Interfund Transfers – Out	1,325,175				
5300 Transfers Out to Component Units/Primary Governments					
Total Other Financing Sources (Uses)	(\$1,325,175)				

Amounts Expressed in Whole Dollars	<u>Capital Reserve (1431)</u> <u>(32)</u>	<u>Other Capital Projects</u> <u>Fund</u> <u>(39)</u>	<u>Debt Service</u> <u>(40)</u>	<u>Permanent</u> <u>(90)</u>	<u>Total Governmental</u> <u>Funds</u>
Revenues					
6000 Revenue from Local Sources	21,281				11,492,667
7000 Revenue from State Sources					21,507,898
8000 Revenue from Federal Sources					1,013,570
Total Revenues	\$21,281				\$34,014,135
Expenditures					
1000 Instruction					19,558,601
2000 Support Services	1,044				8,862,570
3000 Operation of Non-Instructional Services					625,612
4000 Facilities Acquisition, Construction and Improvement Services	1,950,726				2,473,682
5110 Debt Service	386,000				2,413,500
5130 Refund of Prior Year Revenues / Receipts					
Total Expenditures	\$2,337,770				\$33,933,965
Excess (Deficiency) Of Revenues Over Expenditures	(\$2,316,489)				\$80,170
Other Financing Sources (Uses)					
9110 Face Value of Bonds Issued					
9120 Proceeds from Refunding of Bonds					
9130 Bond Premiums					
9200 Proceeds from Extended-Term Financing					
9300 Interfund Transfers - IN	1,238,000				1,238,000
9400 Sale of or Compensation for Loss of Fixed Assets					
9710 Transfers from Component Units					
9720 Transfers from Primary Governments					
9910 Other Financing Sources Not Listed in the 9000 Series					
9990 Insurance Recoveries					
5120 Debt Service – Refunded Bonds					
5150 Bond Discounts					
5200 Interfund Transfers – Out					1,325,175
5300 Transfers Out to Component Units/Primary Governments					
Total Other Financing Sources (Uses)	\$1,238,000				(\$87,175)

Amounts Expressed in Whole Dollars	<u>General Fund</u> <u>(10)</u>	<u>Public Purpose Trust</u> <u>(27)</u>	<u>Other Compt Approved</u> <u>(28)</u>	<u>Athletic / Activity</u> <u>(29)</u>	<u>Capital Reserve</u> <u>(690.</u> <u>1850)</u> <u>(31)</u>
Special And Extraordinary Items					
9920 Special Items – Gains					
9930 Extraordinary Items – Gains					
5520 Special Items – Losses					
5530 Extraordinary Items – Losses					
Net Change In Fund Balances	\$1,071,484				
Fund Balance					
0001 Fund Balance - Beginning of Fiscal Year	7,193,049				
Fund Balance - End Of Year	\$8,264,533				

Amounts Expressed in Whole Dollars	<u>Capital Reserve (1431)</u> <u>(32)</u>	<u>Other Capital Projects</u> <u>Fund</u> <u>(39)</u>	<u>Debt Service</u> <u>(40)</u>	<u>Permanent</u> <u>(90)</u>	<u>Total Governmental</u> <u>Funds</u>
Special And Extraordinary Items					
9920 Special Items – Gains					
9930 Extraordinary Items – Gains					
5520 Special Items – Losses					
5530 Extraordinary Items – Losses					
Net Change In Fund Balances	(\$1,078,489)				(\$7,005)
Fund Balance					
0001 Fund Balance - Beginning of Fiscal Year	7,199,361				14,392,410
Fund Balance - End Of Year	\$6,120,872				\$14,385,405

Amounts Expressed in Whole Dollars	<u>Food Service</u> <u>(51)</u>	<u>Child Care</u> <u>Operations</u> <u>(52)</u>	<u>Other Enterprise</u> <u>(58)</u>	<u>TOTAL</u>	<u>Internal Service</u> <u>(60)</u>
Assets And Deferred Outflows Of Resources					
Current Assets					
0100 Cash and Cash Equivalents	240,908			240,908	
0110 Investments					
0130 Due From Other Funds	10,518			10,518	
0141 Due From Other Governments					
0142 State Revenue Receivable	6,188			6,188	
0143 Federal Revenue Receivable	114,740			114,740	
0146 Due from Primary Government					
0147 Due from Component Unit					
0150 Other Receivables					
0170 Inventories	43,673			43,673	
0180 Prepaid Expenses (Expenditures)					
0190 Other Current Assets					
Total Current Assets	\$416,027			\$416,027	
Noncurrent Assets					
0211 Land					
0212 Site Improvements (Net)					
0220 Buildings and Building Improvements (Net)					
0230 Machinery, Equipment and Furniture (Net)	212,791			212,791	
0250 Construction in Progress					
0260 Long Term Prepayments					
0290 Other Noncurrent Assets					
Total Noncurrent Assets	\$212,791			\$212,791	
0910 Deferred Outflows of Resources					
Total Assets And Deferred Outflows Of Resources	\$628,818			\$628,818	

Amounts Expressed in Whole Dollars	<u>Food Service</u> <u>(51)</u>	<u>Child Care</u> <u>Operations</u> <u>(52)</u>	<u>Other Enterprise</u> <u>(58)</u>	<u>TOTAL</u>	<u>Internal Service</u> <u>(60)</u>
Liabilities And Deferred Inflows Of Resources And Net Position					
Current Liabilities					
0400 Due to Other Funds	195,733			195,733	
0411 Due to Other Governments					
0413 Due to Component Unit					
0420 Accounts Payable	10,518			10,518	
0430 Contracts Payable					
0440 Current Portion of Long-Term Debt					
0450 Short-Term Payables					
0461 Accrued Salaries and Benefits	13,566			13,566	
0462 Payroll Deductions and Withholding					
0480 Unearned Revenues	12,038			12,038	
0490 Other Current Liabilities					
Total Current Liabilities	\$231,855			\$231,855	
Noncurrent Liabilities					
0510 Bonds Payable					
0520 Extended-Term Financing Agreements Payable					
0530 Lease-Purchase Obligations					
0540 Accumulated Compensated Absences					
0550 Authority Lease Obligations					
0560 Other Post-Employment Benefits (OPEB)					
0570 Net Pension Liability					
0599 Other Noncurrent Liabilities					
Total Noncurrent Liabilities					
Total Liabilities	\$231,855			\$231,855	
0950 Deferred Inflows of Resources					
Net Position					
0791 Net Investment in Capital Assets	212,791			212,791	
0008 Restricted Net Position (0792 – 0798)					
0799 Unrestricted Net Position	184,172			184,172	
Total Net Position	\$396,963			\$396,963	
Total Liabilities And Deferred Inflows Of Resources And Net Position	\$628,818			\$628,818	

Amounts Expressed in Whole Dollars	<u>Food Service</u> <u>(51)</u>	<u>Child Care Operations</u> <u>(52)</u>	<u>Other Enterprise</u> <u>(58)</u>	<u>TOTAL</u>	<u>Internal Service</u> <u>(60)</u>
Operating Revenues					
6600 Food Service Revenue	394,526			394,526	
0071 Charges for Services					
0072 Other Operating Revenue					
Total Operating Revenues	\$394,526			\$394,526	
Operating Expenses					
100 Personnel Services – Salaries	485,140			485,140	
200 Personnel Services – Employee Benefits	374,503			374,503	
300 Purchased Professional and Technical Services	2,705			2,705	
400 Purchased Property Services	17,441			17,441	
500 Other Purchased Services	6,979			6,979	
600 Supplies	663,341			663,341	
740 Depreciation	12,381			12,381	
810 Dues and Fees					
890 Miscellaneous Expenditures					
Total Operating Expenses	\$1,562,490			\$1,562,490	
Operating Income (Loss)	(\$1,167,964)			(\$1,167,964)	
Non Operating Revenues (Expenses)					
6500 Earnings on Investments	654			654	
6920 Contributions and Donations from Private Sources	6,872			6,872	
6930 Gains or Losses on Sale of Fixed Assets					
6991 Refunds of a Prior Year Expenditure					
7000 Revenue from State Sources	174,385			174,385	
8000 Revenue from Federal Sources	1,011,878			1,011,878	
820 Claims and Judgments Against the LEA					
830 Interest					
TOTAL Non Operating Revenues (Expenses)	\$1,193,789			\$1,193,789	
Income (Loss) Before Contributions And Transfers	\$25,825			\$25,825	

Amounts Expressed in Whole Dollars	<u>Food Service</u> <u>(51)</u>	<u>Child Care Operations</u> <u>(52)</u>	<u>Other Enterprise</u> <u>(58)</u>	<u>TOTAL</u>	<u>Internal Service</u> <u>(60)</u>
Contributions, Transfers, and Special and Extraordinary Items					
5200 Interfund Transfers – Out					
5300 Transfers Out to Component Units/Primary Governments					
5520 Special Items – Losses					
5530 Extraordinary Items – Losses					
9300 Interfund Transfers - IN	87,175			87,175	
9500 Capital Contributions					
9700 Transfers IN From Component Units/Primary Governments					
9920 Special Items – Gains					
9930 Extraordinary Items – Gains					
Change In Net Position	\$113,000			\$113,000	
0002 Net Position - Beginning of Fiscal Year	283,960			283,960	
0003 Accounting Changes / Residual Equity Transfers					
Net Position - End Of Year	\$396,960			\$396,960	

LEA : 117596003 Northern Tioga SD

Printed 12/14/2017 9:13:54 AM

Amounts Expressed in Whole Dollars	<u>Food Service</u> <u>(51)</u>	<u>Child Care Operations</u> <u>(52)</u>	<u>Other Enterprise</u> <u>(58)</u>	<u>TOTAL</u>	<u>Internal Service(60)</u>
Cash Flows From Operating Activities					
0011 Cash Receipts From Users	383,196			383,196	
0012 Cash Receipts From Assessments Made to Other Funds					
0013 Cash Receipts From Earnings on Investments					
0014 Cash Receipts From Other Operating Revenue					
0015 Cash Payments To Employees For Services	775,849			775,849	
0016 Cash Payments For Insurance Claims					
0017 Cash Payments To Suppliers For Goods and Services	576,570			576,570	
0018 Cash Payments For Other Operating Expenses					
Net Cash Provided By (Used For) Operating Activities	(\$969,223)			(\$969,223)	
Cash Flows From Non-Capital Financing Activities					
0021 Receipts From Local Sources - 6000	6,872			6,872	
0022 Receipts From State Sources - 7000	173,429			173,429	
0023 Receipts From Federal Sources -8000	871,690			871,690	
0024 Notes and Loans Received (Repaid)					
0025 Interest Paid on Notes/Loans - 5100-830					
0026 Operating Transfers In (Out)/Residual Equity Trans	87,175			87,175	
0027 Operating Transfers In (Out) Primary Government / Comp Unit					
0028 Receipts From Refund of Prior Year Expenditures - 6991					
0029 Special and Extraordinary Gains (losses)					
Net Cash Prov By (Used for) Non-Capital Financing Activities	\$1,139,166			\$1,139,166	
Cash Flows From Capital and Related Financing Activities					
0031 Payments For Fac Acq, Const, and Imp - 4000	(94,045)			(94,045)	
0032 Gain / (Loss) on Sale of Fixed Assets - 6930					
0033 Proceeds From Extended Term Financing - 9200					
0034 Principal Paid on Financing Agreements					
0035 Interest Paid on Financing Agreements - 5100-830					
0036 (Inc) Dec in Contributed Capital					
Net Cash Prov By (Used for) Capital and Related Financing Activities	(\$94,045)			(\$94,045)	
Cash Flows From Investing Activities					
0041 Earnings on Investments - 6500	657			657	
0042 Purchase of Inv Securities / Deposits to Inv Pools					
0043 Receipts From Investment Pool Withdrawals					
0044 Proceeds from Sale and Maturity of Inv Securities					
0045 Loans Received (Paid)					
Net Cash Prov By (Used for) Investing Activities	\$657			\$657	

	<u>Food Service</u> <u>(51)</u>	<u>Child Care Operations</u> <u>(52)</u>	<u>Other Enterprise</u> <u>(58)</u>	<u>TOTAL</u>	<u>Internal Service</u> <u>(60)</u>
Net Increase (Decrease) in Cash Flows	76,555			76,555	
0004 Cash and Cash Equivalents Beginning of Year	164,353			164,353	
Cash and Cash Equivalents at Year End	\$240,908			\$240,908	
<hr/>					
Reconciliation of Operating Income (Loss) To Net Cash Provided by (Used For) Operating Activities					
0005 Operating Income (Loss) per REP	(1,167,964)			(1,167,964)	
Adjustments					
0051 Depreciation and Net Amortization	12,381			12,381	
0052 Provision for Uncollectible Accounts					
0053 Other Adjustments	113,102			113,102	
Effect of Changes in Assets, Liabilities, Deferred Outflows and Deferred Inflows					
0054 (Inc) Dec In Accounts Receivable (0120-0150)	(10,518)			(10,518)	
0055 Advances to Other Funds (0160)					
0056 (Inc) Dec in Inventories (0170)	(9,724)			(9,724)	
0057 (Inc) Dec in Prepaid Expenses (0180)					
0058 (Inc) Dec in Other Current or Noncurrent Assets					
0064 Deferred Outflows (0910)					
0059 Inc (Dec) in Accounts Payable (0400-0450)	10,518			10,518	
0060 Inc (Dec) in Accrued Salaries/Benefits (0461)	5,663			5,663	
0065 Inc (Dec) in Net Pension Liabilities (0570)					
0066 Inc (Dec) in Other Postemp Benefit Oblig (0560)					
0061 Inc (Dec) in Payroll Deductions/Withholding (0462)					
0062 Inc (Dec) in Unearned Revenue (0480)	(812)			(812)	
0063 Inc (Dec) in Other Current or Noncurrent Liabilities	78,131			78,131	
0067 Deferred Inflows (0950)					
Total Adjustments	\$198,741			\$198,741	
Cash Provided By (Used for) Total	(\$969,223)			(\$969,223)	

COMBINED STATEMENT OF CASH FLOWS
SCHEDULE OF NONCASH INVESTING, CAPITAL, AND FINANCING ACTIVITIES

Explanation of Transaction and Balance Sheet Effect	Amount
Total	

LEA : 117596003 Northern Tioga SD

Printed 12/14/2017 9:13:54 AM

Amounts Expressed in Whole Dollars

	<u>Private Purpose Trust</u> (71)	<u>Investment Trust</u> (72)	<u>Pension Trust</u> (73)	<u>Activity</u> (81)
Assets And Deferred Outflows Of Resources				
Assets				
0100 Cash and Cash Equivalents	41,538			197,491
0110 Investments	132,540			
0130 Due From Other Funds				
0147 Due from Component Unit				
0150 Other Receivables				15,849
0170 Inventories				
0180 Prepaid Expenses (Expenditures)				
0190 Other Current Assets				
0220 Buildings and Building Improvements (Net)				
0230 Machinery, Equipment and Furniture (Net)				
Total Assets	\$174,078			\$213,340
0910 Deferred Outflows of Resources				
Total Assets And Deferred Outflows Of Resources	\$174,078			\$213,340

LEA : 117596003 Northern Tioga SD

Printed 12/14/2017 9:13:54 AM

Amounts Expressed in Whole Dollars

	<u>Other Agency</u> <u>(89)</u>	<u>Discrete Component Units</u> <u>(98)</u>	<u>Discrete Component Units</u> <u>(99)</u>	<u>Total Fiduciary Funds</u>
Assets And Deferred Outflows Of Resources				
Assets				
0100 Cash and Cash Equivalents	422,626			661,655
0110 Investments	655,073			787,613
0130 Due From Other Funds				
0147 Due from Component Unit				
0150 Other Receivables				15,849
0170 Inventories				
0180 Prepaid Expenses (Expenditures)				
0190 Other Current Assets				
0220 Buildings and Building Improvements (Net)				
0230 Machinery, Equipment and Furniture (Net)				
Total Assets	\$1,077,699			\$1,465,117
0910 Deferred Outflows of Resources				
Total Assets And Deferred Outflows Of Resources	\$1,077,699			\$1,465,117

LEA : 117596003 Northern Tioga SD

Printed 12/14/2017 9:13:54 AM

Amounts Expressed in Whole Dollars	<u>Private Purpose Trust</u> (71)	<u>Investment Trust</u> (72)	<u>Pension Trust</u> (73)	<u>Activity</u> (81)
Liabilities, Deferred Inflows Of Resources And Net Position				
Liabilities				
0400 Due to Other Funds				
0411 Due to Other Governments				
0412 Due to Primary Government				
0413 Due to Component Unit				
0420 Accounts Payable				3,500
0430 Contracts Payable				
0450 Short-Term Payables				
0461 Accrued Salaries and Benefits				
0462 Payroll Deductions and Withholding				
0480 Unearned Revenues				
0490 Other Current Liabilities				209,840
Total Liabilities				\$213,340
0950 Deferred Inflows of Resources				
Net Position				
0791 Net Investment in Capital Assets				
0009 Restricted Net Position (0792 – 0798)	174,078			
0799 Unrestricted Net Position				
Total Net Position	\$174,078			
Total Liabilities, Deferred Inflows Of Resources And Net Position	\$174,078			\$213,340

LEA : 117596003 Northern Tioga SD

Printed 12/14/2017 9:13:54 AM

Amounts Expressed in Whole Dollars	<u>Other Agency</u> <u>(89)</u>	<u>Discrete Component Units</u> <u>(98)</u>	<u>Discrete Component Units</u> <u>(99)</u>	<u>Total Fiduciary Funds</u>
Liabilities, Deferred Inflows Of Resources And Net Position				
Liabilities				
0400 Due to Other Funds				
0411 Due to Other Governments				
0412 Due to Primary Government				
0413 Due to Component Unit				
0420 Accounts Payable		17,114		20,614
0430 Contracts Payable				
0450 Short-Term Payables				
0461 Accrued Salaries and Benefits				
0462 Payroll Deductions and Withholding				
0480 Unearned Revenues				
0490 Other Current Liabilities		1,060,585		1,270,425
Total Liabilities		\$1,077,699		\$1,291,039
0950 Deferred Inflows of Resources				
Net Position				
0791 Net Investment in Capital Assets				
0009 Restricted Net Position (0792 – 0798)				174,078
0799 Unrestricted Net Position				
Total Net Position				\$174,078
Total Liabilities, Deferred Inflows Of Resources And Net Position		\$1,077,699		\$1,465,117

Amounts Expressed in Whole Dollars	<u>Private Purpose Trust</u> <u>(71)</u>	<u>Investment Trust</u> <u>(72)</u>	<u>Pension Trust</u> <u>(73)</u>	<u>Discrete Component</u> <u>Units</u> <u>(98)</u>	<u>Discrete Component</u> <u>Units</u> <u>(99)</u>	<u>Total Fiduciary</u> <u>Funds</u>
Additions						
0091 Gifts and Contributions	16,121					16,121
0092 Other Additions	612					612
Deductions						
0093 Scholarships Awarded	4,630					4,630
0094 Other Deductions	5					5
Change In Net Position	\$12,098					\$12,098
0006 Net Position – Beginning of Fiscal Year	161,980					161,980
0007 Net Position Held in Trust for Pension Benefits						
Net Position - End of Fiscal Year	\$174,078					\$174,078

	<u>Revenue Reported In Current Year</u>	<u>Current Year Tax Accrual</u>	<u>Prior Year Tax Accrual</u>	<u>Taxes Collected In Current Year</u>
<u>Revenue from Local Sources</u>				
6111 Current Real Estate Taxes	7,522,065.96			7,522,065.96
6112 Interim Real Estate Taxes	32,286.72			32,286.72
6113 Public Utility Realty Taxes	11,665.00			11,665.00
6114 Payments in Lieu of Current Taxes - State / Local	34,372.60			34,372.60
6143 Current Act 511 Local Services Taxes	20,666.48	259.43	263.79	20,670.84
6151 Current Act 511 Earned Income Taxes	2,183,767.41	15,638.83	17,318.13	2,185,446.71
6153 Current Act 511 Real Estate Transfer Taxes	148,286.09			148,286.09
6411 Delinquent Real Estate Taxes	975,695.09	109,850.74	78,298.61	944,142.96
6500 Earnings on Investments	36,584.13			
6832 Federal IDEA Revenue Received as Pass Through	365,789.00			
6910 Rentals	23,545.10			
6920 Contributions and Donations from Private Sources	65,304.15			
6941 Regular Day School Tuition	988.16			
6942 Summer School Tuition	2,537.00			
6949 Other Tuition from Patrons	3,550.00			
6991 Refunds of a Prior Year Expenditure	1,587.71			
6999 Other Revenues Not Specified Above	42,695.03			
TOTAL Revenue from Local Sources	\$11,471,385.63	\$125,749.00	\$95,880.53	\$10,898,936.88

**Revenue Reported
In Current Year**

Revenue from State Sources

7110 Basic Education Funding	12,378,407.48		
7160 Tuition for Orphans Subsidy	35,114.64		
7220 Vocational Education	41,491.08		
7240 Driver Education - Student	3,745.00		
7250 Migratory Children	50.00		
7271 Special Education funds for School-Aged Pupils	1,646,871.56		
7311 Pupil Transportation Subsidy	1,482,020.36		
7312 Nonpublic and Charter School Pupil Transportation Subsidy	23,100.00		
7320 Rental and Sinking Fund Payments / Building Reimbursement Subsidy	1,475,321.55		
7330 Health Services (Medical, Dental, Nurse, Act 25)	37,376.77		
7340 State Property Tax Reduction Allocation	477,555.83		
7360 Safe Schools	24,600.00		
7505 Ready to Learn Block Grant	446,252.00		
7509 Supplemental Equipment Grants	5,186.95		
7810 State Share of Social Security and Medicare Taxes	671,666.54		
7820 State Share of Retirement Contributions	2,759,138.21		
TOTAL Revenue from State Sources	\$21,507,897.97		

**Revenue Reported
In Current Year**

Revenue from Federal Sources

8514 NCLB, Title I - Improving the Academic Achievement of the Disadvantaged	522,979.10			
8515 NCLB, Title II - Preparing, Training and Recruiting High Quality Teachers and Principals	162,933.68			
8519 NCLB, Title VI - Flexibility and Accountability	44,492.00			
8521 Vocational Education - Operating Expenditures	35,368.30			
8810 School-Based Access Medicaid Reimbursement Program (SBAP) Reimbursements (Access)	239,527.60			
8820 Medical Assistance Reimbursement for Administrative Claiming (Quarterly) Program	8,269.05			
TOTAL Revenue from Federal Sources	\$1,013,569.73			
TOTAL FROM ALL SOURCES	\$33,992,853.33	\$125,749.00	\$95,880.53	\$10,898,936.88

Revenue from Local Sources	11,471,385.63
Revenue from State Sources	21,507,897.97
Revenue from Federal Sources	1,013,569.73
Other Financing Sources	
TOTAL FROM ALL SOURCES	\$33,992,853.33

General Fund (10)

	<u>Total</u>
1000 Instruction	
100 Personnel Services – Salaries	
100 Personnel Services – Salaries	10,850,134.24
Total Personnel Services – Salaries	\$10,850,134.24
200 Personnel Services – Employee Benefits	
210 Group Insurance – Contracted Provider	3,040,828.84
220 Social Security Contributions	816,057.59
230 PSERS Retirement Contributions	3,303,646.28
250 Unemployment Compensation	4,579.79
260 Workers’ Compensation	42,745.35
291 Other Retirement Plans	53,273.00
Total Personnel Services – Employee Benefits	\$7,261,130.85
300 Purchased Professional and Technical Services	
322 Professional Educational Services – Ius	110,465.16
330 Other Professional Services	117,424.76
340 Technical Services	130.00
Total Purchased Professional and Technical Services	\$228,019.92
400 Purchased Property Services	
430 Repairs and Maintenance Services	5,330.34
440 Rentals	66,892.10
Total Purchased Property Services	\$72,222.44
500 Other Purchased Services	
510 Student Transportation Services	18,752.65
520 Insurance – General	2,102.00
530 Communications	18,680.79
550 Printing and Binding	1,813.98
561 Tuition To Other School Districts Within the State	121,336.62
562 Tuition To Pennsylvania Charter Schools	423,039.27
563 Tuition To Nonpublic Schools	2,367.00
567 Tuition To Approved Private Schools (APS) and PA Chartered Schools for the Deaf and Blind	12,427.97
568 Tuition To Private Residential Rehabilitative Institutions (PRRI) [In-State] and Detention Centers	7,311.75
569 Tuition – Other	82,339.61
580 Travel	5,300.95
Total Other Purchased Services	\$695,472.59
600 Supplies	
610 General Supplies	170,905.89
630 Food	12,304.05
640 Books and Periodicals	127,629.97
650 Supplies & Fees – Technology Related	39,982.15
Total Supplies	\$350,822.06
700 Property	
752 Capital Equipment – Original and Additional	12,119.17
762 Capitalized Equipment - Replacement	51,147.48
768 Capitalized Technology Software - Replacement	37,398.00

General Fund (10)

		<u>Total</u>
1000 Instruction		
Total Property		\$100,664.65
800 Other Objects		
810 Dues and Fees		134.00
Total Other Objects		\$134.00
Total 1000 Instruction		\$19,558,600.75

General Fund (10)

	<u>Elementary</u>	<u>Secondary</u>	<u>Federal</u>	<u>Total</u>
1100 Regular Programs – Elementary / Secondary				
100 Personnel Services – Salaries				
100 Personnel Services – Salaries	3,980,659.18	3,192,422.00	401,182.94	7,574,264.12
Total Personnel Services – Salaries	\$3,980,659.18	\$3,192,422.00	\$401,182.94	\$7,574,264.12
200 Personnel Services – Employee Benefits				
210 Group Insurance – Contracted Provider	1,004,735.02	828,304.44	89,727.18	1,922,766.64
220 Social Security Contributions	300,225.93	238,994.00	30,412.78	569,632.71
230 PSERS Retirement Contributions	1,216,132.23	991,611.79	118,556.95	2,326,300.97
250 Unemployment Compensation	1,423.44	1,016.27	210.11	2,649.82
260 Workers' Compensation	15,889.85	12,135.90	1,692.86	29,718.61
291 Other Retirement Plans	30,322.00	11,067.00	350.00	41,739.00
Total Personnel Services – Employee Benefits	\$2,568,728.47	\$2,083,129.40	\$240,949.88	\$4,892,807.75
300 Purchased Professional and Technical Services				
330 Other Professional Services		46,597.10		46,597.10
Total Purchased Professional and Technical Services		\$46,597.10		\$46,597.10
400 Purchased Property Services				
430 Repairs and Maintenance Services	3,764.59	1,159.90		4,924.49
440 Rentals	35,022.53	20,189.57		55,212.10
Total Purchased Property Services	\$38,787.12	\$21,349.47		\$60,136.59
500 Other Purchased Services				
510 Student Transportation Services	5,600.10	5,926.01		11,526.11
530 Communications	9,792.47	8,888.32		18,680.79
550 Printing and Binding		1,813.98		1,813.98
561 Tuition To Other School Districts Within the State	753.00	8,585.58		9,338.58
562 Tuition To Pennsylvania Charter Schools	84,004.54	196,010.60		280,015.14
568 Tuition To Private Residential Rehabilitative Institutions (PRRI) [In-State] and Detention Centers	3,655.88	3,655.87		7,311.75
569 Tuition – Other	2,911.84	22,964.84		25,876.68
580 Travel	4.55	83.20		87.75
Total Other Purchased Services	\$106,722.38	\$247,928.40		\$354,650.78
600 Supplies				
610 General Supplies	63,114.41	68,463.71	5,237.06	136,815.18
630 Food	916.70	345.97		1,262.67
640 Books and Periodicals	55,721.97	61,663.56		117,385.53
650 Supplies & Fees – Technology Related	28,536.62	11,445.53		39,982.15
Total Supplies	\$148,289.70	\$141,918.77	\$5,237.06	\$295,445.53
700 Property				
762 Capitalized Equipment - Replacement		4,636.40		4,636.40
768 Capitalized Technology Software - Replacement		37,398.00		37,398.00
Total Property		\$42,034.40		\$42,034.40
800 Other Objects				
810 Dues and Fees	134.00			134.00
Total Other Objects	\$134.00			\$134.00
Total 1100 Regular Programs – Elementary / Secondary	\$6,843,320.85	\$5,775,379.54	\$647,369.88	\$13,266,070.27

General Fund (10)

1110 Regular Programs

	<u>Elementary</u>	<u>Secondary</u>	<u>Federal</u>	<u>Total</u>
100 Personnel Services – Salaries				
100 Personnel Services – Salaries	3,980,659.18	3,192,422.00	2,380.00	7,175,461.18
Total Personnel Services – Salaries	\$3,980,659.18	\$3,192,422.00	\$2,380.00	\$7,175,461.18
200 Personnel Services – Employee Benefits				
210 Group Insurance – Contracted Provider	1,004,735.02	828,304.44		1,833,039.46
220 Social Security Contributions	300,225.93	238,994.00	182.08	539,402.01
230 PSERS Retirement Contributions	1,216,132.23	991,611.79	273.27	2,208,017.29
250 Unemployment Compensation	1,423.44	1,016.27	20.95	2,460.66
260 Workers' Compensation	15,889.85	12,135.90	13.10	28,038.85
291 Other Retirement Plans	30,322.00	11,067.00		41,389.00
Total Personnel Services – Employee Benefits	\$2,568,728.47	\$2,083,129.40	\$489.40	\$4,652,347.27
300 Purchased Professional and Technical Services				
330 Other Professional Services		46,597.10		46,597.10
Total Purchased Professional and Technical Services		\$46,597.10		\$46,597.10
400 Purchased Property Services				
430 Repairs and Maintenance Services	3,764.59	1,159.90		4,924.49
440 Rentals	35,022.53	20,189.57		55,212.10
Total Purchased Property Services	\$38,787.12	\$21,349.47		\$60,136.59
500 Other Purchased Services				
510 Student Transportation Services	5,600.10	5,926.01		11,526.11
530 Communications	9,792.47	8,888.32		18,680.79
550 Printing and Binding		1,813.98		1,813.98
561 Tuition To Other School Districts Within the State	753.00	8,585.58		9,338.58
562 Tuition To Pennsylvania Charter Schools	84,004.54	196,010.60		280,015.14
568 Tuition To Private Residential Rehabilitative Institutions (PRRI) [In-State] and Detention Centers	3,655.88	3,655.87		7,311.75
569 Tuition – Other	2,911.84	22,964.84		25,876.68
580 Travel	4.55	83.20		87.75
Total Other Purchased Services	\$106,722.38	\$247,928.40		\$354,650.78
600 Supplies				
610 General Supplies	63,114.41	68,463.71	2,649.67	134,227.79
630 Food	916.70	345.97		1,262.67
640 Books and Periodicals	55,721.97	61,663.56		117,385.53
650 Supplies & Fees – Technology Related	28,536.62	11,445.53		39,982.15
Total Supplies	\$148,289.70	\$141,918.77	\$2,649.67	\$292,858.14
700 Property				
762 Capitalized Equipment - Replacement		4,636.40		4,636.40
768 Capitalized Technology Software - Replacement		37,398.00		37,398.00
Total Property		\$42,034.40		\$42,034.40
800 Other Objects				
810 Dues and Fees	134.00			134.00
Total Other Objects	\$134.00			\$134.00
Total 1110 Regular Programs	\$6,843,320.85	\$5,775,379.54	\$5,519.07	\$12,624,219.46

General Fund (10)

1190 Federally-Funded Regular Programs

100 Personnel Services – Salaries

100 Personnel Services – Salaries

Total Personnel Services – Salaries

200 Personnel Services – Employee Benefits

210 Group Insurance – Contracted Provider

220 Social Security Contributions

230 PSERS Retirement Contributions

250 Unemployment Compensation

260 Workers' Compensation

291 Other Retirement Plans

Total Personnel Services – Employee Benefits

600 Supplies

610 General Supplies

Total Supplies

Total 1190 Federally-Funded Regular Programs

	<u>Elementary</u>	<u>Secondary</u>	<u>Federal</u>	<u>Total</u>
			398,802.94	398,802.94
Total Personnel Services – Salaries			\$398,802.94	\$398,802.94
			89,727.18	89,727.18
			30,230.70	30,230.70
			118,283.68	118,283.68
			189.16	189.16
			1,679.76	1,679.76
			350.00	350.00
Total Personnel Services – Employee Benefits			\$240,460.48	\$240,460.48
			2,587.39	2,587.39
Total Supplies			\$2,587.39	\$2,587.39
Total 1190 Federally-Funded Regular Programs			\$641,850.81	\$641,850.81

General Fund (10)

1200 Special Programs – Elementary / Secondary

	<u>Elementary</u>	<u>Secondary</u>	<u>Federal</u>	<u>Total</u>
100 Personnel Services – Salaries				
100 Personnel Services – Salaries	1,098,284.18	1,152,758.69	49,313.24	2,300,356.11
Total Personnel Services – Salaries	\$1,098,284.18	\$1,152,758.69	\$49,313.24	\$2,300,356.11
200 Personnel Services – Employee Benefits				
210 Group Insurance – Contracted Provider	417,297.61	439,940.34	18,361.72	875,599.67
220 Social Security Contributions	82,580.28	86,569.02	3,635.96	172,785.26
230 PSERS Retirement Contributions	326,107.24	345,276.09	14,808.82	686,192.15
250 Unemployment Compensation	443.03	471.40	170.64	1,085.07
260 Workers' Compensation	4,227.37	4,379.81	271.19	8,878.37
291 Other Retirement Plans	3,948.00	3,204.00		7,152.00
Total Personnel Services – Employee Benefits	\$834,603.53	\$879,840.66	\$37,248.33	\$1,751,692.52
300 Purchased Professional and Technical Services				
322 Professional Educational Services – Ius	49,620.64	47,185.14		96,805.78
330 Other Professional Services	29,925.34	29,925.32		59,850.66
340 Technical Services			130.00	130.00
Total Purchased Professional and Technical Services	\$79,545.98	\$77,110.46	\$130.00	\$156,786.44
400 Purchased Property Services				
430 Repairs and Maintenance Services	202.87	202.98		405.85
Total Purchased Property Services	\$202.87	\$202.98		\$405.85
500 Other Purchased Services				
510 Student Transportation Services	1,818.96	2,348.78		4,167.74
561 Tuition To Other School Districts Within the State	11,282.39	86,131.40		97,413.79
562 Tuition To Pennsylvania Charter Schools	71,512.07	71,512.06		143,024.13
567 Tuition To Approved Private Schools (APS) and PA Chartered Schools for the Deaf and Blind	6,213.99	6,213.98		12,427.97
569 Tuition – Other	27,961.47	27,961.46		55,922.93
580 Travel	175.33	241.31		416.64
Total Other Purchased Services	\$118,964.21	\$194,408.99		\$313,373.20
600 Supplies				
610 General Supplies	5,453.48	7,316.81		12,770.29
630 Food	701.25	1,330.16		2,031.41
640 Books and Periodicals	4,148.08	2,578.52		6,726.60
Total Supplies	\$10,302.81	\$11,225.49		\$21,528.30
Total 1200 Special Programs – Elementary / Secondary	\$2,141,903.58	\$2,315,547.27	\$86,691.57	\$4,544,142.42

General Fund (10)

1210 Life Skills Support

	<u>Elementary</u>	<u>Secondary</u>	<u>Federal</u>	<u>Total</u>
100 Personnel Services – Salaries				
100 Personnel Services – Salaries	168,855.83	108,503.20		277,359.03
Total Personnel Services – Salaries	\$168,855.83	\$108,503.20		\$277,359.03
200 Personnel Services – Employee Benefits				
210 Group Insurance – Contracted Provider	71,082.43	51,931.91		123,014.34
220 Social Security Contributions	12,738.81	8,103.59		20,842.40
230 PSERS Retirement Contributions	49,983.96	32,592.42		82,576.38
250 Unemployment Compensation	74.16	64.09		138.25
260 Workers' Compensation	641.57	412.53		1,054.10
291 Other Retirement Plans	250.00	1,804.00		2,054.00
Total Personnel Services – Employee Benefits	\$134,770.93	\$94,908.54		\$229,679.47
500 Other Purchased Services				
510 Student Transportation Services	1,063.50	1,434.49		2,497.99
561 Tuition To Other School Districts Within the State		18,317.68		18,317.68
569 Tuition – Other	26,368.00	26,368.00		52,736.00
580 Travel		65.98		65.98
Total Other Purchased Services	\$27,431.50	\$46,186.15		\$73,617.65
600 Supplies				
610 General Supplies	709.23	2,995.46		3,704.69
630 Food	473.96	1,052.37		1,526.33
640 Books and Periodicals	1,719.00	1,719.01		3,438.01
Total Supplies	\$2,902.19	\$5,766.84		\$8,669.03
Total 1210 Life Skills Support	\$333,960.45	\$255,364.73		\$589,325.18

General Fund (10)

1220 Sensory Support

	<u>Elementary</u>	<u>Secondary</u>	<u>Federal</u>	<u>Total</u>
100 Personnel Services – Salaries				
100 Personnel Services – Salaries	36,561.18	36,561.17	36,129.65	109,252.00
Total Personnel Services – Salaries	\$36,561.18	\$36,561.17	\$36,129.65	\$109,252.00
200 Personnel Services – Employee Benefits				
210 Group Insurance – Contracted Provider	6,408.63	6,408.61	13,136.49	25,953.73
220 Social Security Contributions	2,757.36	2,757.36	2,641.44	8,156.16
230 PSERS Retirement Contributions	10,979.37	10,979.36	10,849.78	32,808.51
250 Unemployment Compensation	(29.26)	(29.26)	85.80	27.28
260 Workers' Compensation	107.89	107.88	198.67	414.44
Total Personnel Services – Employee Benefits	\$20,223.99	\$20,223.95	\$26,912.18	\$67,360.12
300 Purchased Professional and Technical Services				
322 Professional Educational Services – lus	9,947.74	9,947.72		19,895.46
Total Purchased Professional and Technical Services	\$9,947.74	\$9,947.72		\$19,895.46
400 Purchased Property Services				
430 Repairs and Maintenance Services	202.50	202.50		405.00
Total Purchased Property Services	\$202.50	\$202.50		\$405.00
500 Other Purchased Services				
580 Travel	128.89	128.89		257.78
Total Other Purchased Services	\$128.89	\$128.89		\$257.78
600 Supplies				
610 General Supplies	874.87	874.86		1,749.73
Total Supplies	\$874.87	\$874.86		\$1,749.73
Total 1220 Sensory Support	\$67,939.17	\$67,939.09	\$63,041.83	\$198,920.09

General Fund (10)

1230 Emotional Support

	<u>Elementary</u>	<u>Secondary</u>	<u>Federal</u>	<u>Total</u>
100 Personnel Services – Salaries				
100 Personnel Services – Salaries	175,081.54	140,989.46		316,071.00
Total Personnel Services – Salaries	\$175,081.54	\$140,989.46		\$316,071.00
200 Personnel Services – Employee Benefits				
210 Group Insurance – Contracted Provider	48,713.65	61,708.46		110,422.11
220 Social Security Contributions	13,333.24	10,395.18		23,728.42
230 PSERS Retirement Contributions	52,519.56	42,399.39		94,918.95
250 Unemployment Compensation	99.36	71.17		170.53
260 Workers' Compensation	675.18	536.07		1,211.25
291 Other Retirement Plans	500.00	300.00		800.00
Total Personnel Services – Employee Benefits	\$115,840.99	\$115,410.27		\$231,251.26
300 Purchased Professional and Technical Services				
322 Professional Educational Services – Ius	37,237.43	37,237.42		74,474.85
Total Purchased Professional and Technical Services	\$37,237.43	\$37,237.42		\$74,474.85
400 Purchased Property Services				
430 Repairs and Maintenance Services	0.37	0.48		0.85
Total Purchased Property Services	\$0.37	\$0.48		\$0.85
500 Other Purchased Services				
510 Student Transportation Services	642.96	438.23		1,081.19
561 Tuition To Other School Districts Within the State	11,162.39	67,693.72		78,856.11
569 Tuition – Other	1,593.47	1,593.46		3,186.93
Total Other Purchased Services	\$13,398.82	\$69,725.41		\$83,124.23
600 Supplies				
610 General Supplies	1,972.43	871.21		2,843.64
630 Food	29.50			29.50
640 Books and Periodicals	2,019.14	859.51		2,878.65
Total Supplies	\$4,021.07	\$1,730.72		\$5,751.79
Total 1230 Emotional Support	\$345,580.22	\$365,093.76		\$710,673.98

General Fund (10)

1240 Academic Support

	<u>Elementary</u>	<u>Secondary</u>	<u>Federal</u>	<u>Total</u>
100 Personnel Services – Salaries				
100 Personnel Services – Salaries	709,506.26	770,108.11	13,183.59	1,492,797.96
Total Personnel Services – Salaries	\$709,506.26	\$770,108.11	\$13,183.59	\$1,492,797.96
200 Personnel Services – Employee Benefits				
210 Group Insurance – Contracted Provider	291,092.90	298,099.99	5,225.23	594,418.12
220 Social Security Contributions	53,004.59	57,864.75	994.52	111,863.86
230 PSERS Retirement Contributions	210,138.04	230,947.91	3,959.04	445,044.99
250 Unemployment Compensation	281.82	317.99	84.84	684.65
260 Workers' Compensation	2,771.31	2,955.30	72.52	5,799.13
291 Other Retirement Plans	3,198.00	700.00		3,898.00
Total Personnel Services – Employee Benefits	\$560,486.66	\$590,885.94	\$10,336.15	\$1,161,708.75
300 Purchased Professional and Technical Services				
322 Professional Educational Services – Ius	2,435.47			2,435.47
Total Purchased Professional and Technical Services	\$2,435.47			\$2,435.47
500 Other Purchased Services				
510 Student Transportation Services		333.40		333.40
561 Tuition To Other School Districts Within the State	120.00	120.00		240.00
Total Other Purchased Services	\$120.00	\$453.40		\$573.40
600 Supplies				
610 General Supplies	1,838.25	1,929.53		3,767.78
630 Food		80.00		80.00
640 Books and Periodicals	409.94			409.94
Total Supplies	\$2,248.19	\$2,009.53		\$4,257.72
Total 1240 Academic Support	\$1,274,796.58	\$1,363,456.98	\$23,519.74	\$2,661,773.30

General Fund (10)

	<u>Elementary</u>	<u>Secondary</u>	<u>Federal</u>	<u>Total</u>
1241 Learning Support – Public				
100 Personnel Services – Salaries				
100 Personnel Services – Salaries	658,562.90	757,372.47	13,183.59	1,429,118.96
Total Personnel Services – Salaries	\$658,562.90	\$757,372.47	\$13,183.59	\$1,429,118.96
200 Personnel Services – Employee Benefits				
210 Group Insurance – Contracted Provider	278,689.16	294,999.01	5,225.23	578,913.40
220 Social Security Contributions	49,265.22	56,929.89	994.52	107,189.63
230 PSERS Retirement Contributions	194,839.66	227,123.37	3,959.04	425,922.07
250 Unemployment Compensation	213.16	300.81	84.84	598.81
260 Workers' Compensation	2,491.27	2,885.12	72.52	5,448.91
291 Other Retirement Plans	3,198.00	700.00		3,898.00
Total Personnel Services – Employee Benefits	\$528,696.47	\$582,938.20	\$10,336.15	\$1,121,970.82
300 Purchased Professional and Technical Services				
322 Professional Educational Services – Ius	2,435.47			2,435.47
Total Purchased Professional and Technical Services	\$2,435.47			\$2,435.47
500 Other Purchased Services				
510 Student Transportation Services		333.40		333.40
561 Tuition To Other School Districts Within the State	120.00	120.00		240.00
Total Other Purchased Services	\$120.00	\$453.40		\$573.40
600 Supplies				
610 General Supplies	1,838.25	1,435.13		3,273.38
630 Food		80.00		80.00
640 Books and Periodicals	409.94			409.94
Total Supplies	\$2,248.19	\$1,515.13		\$3,763.32
Total 1241 Learning Support – Public	\$1,192,063.03	\$1,342,279.20	\$23,519.74	\$2,557,861.97

General Fund (10)

1243 Gifted Support

	<u>Elementary</u>	<u>Secondary</u>	<u>Federal</u>	<u>Total</u>
100 Personnel Services – Salaries				
100 Personnel Services – Salaries	50,943.36	12,735.64		63,679.00
Total Personnel Services – Salaries	\$50,943.36	\$12,735.64		\$63,679.00
200 Personnel Services – Employee Benefits				
210 Group Insurance – Contracted Provider	12,403.74	3,100.98		15,504.72
220 Social Security Contributions	3,739.37	934.86		4,674.23
230 PSERS Retirement Contributions	15,298.38	3,824.54		19,122.92
250 Unemployment Compensation	68.66	17.18		85.84
260 Workers' Compensation	280.04	70.18		350.22
Total Personnel Services – Employee Benefits	\$31,790.19	\$7,947.74		\$39,737.93
600 Supplies				
610 General Supplies		494.40		494.40
Total Supplies		\$494.40		\$494.40
Total 1243 Gifted Support	\$82,733.55	\$21,177.78		\$103,911.33

General Fund (10)

1260 Physical Support

300 Purchased Professional and Technical Services

330 Other Professional Services

Total Purchased Professional and Technical Services

Total 1260 Physical Support

	<u>Elementary</u>	<u>Secondary</u>	<u>Federal</u>	<u>Total</u>
330 Other Professional Services	29,925.34	29,925.32		59,850.66
Total Purchased Professional and Technical Services	\$29,925.34	\$29,925.32		\$59,850.66
Total 1260 Physical Support	\$29,925.34	\$29,925.32		\$59,850.66

General Fund (10)

1270 Multi-Handicapped Support

	<u>Elementary</u>	<u>Secondary</u>	<u>Federal</u>	<u>Total</u>
100 Personnel Services – Salaries				
100 Personnel Services – Salaries		88,317.38		88,317.38
Total Personnel Services – Salaries		\$88,317.38		\$88,317.38
200 Personnel Services – Employee Benefits				
210 Group Insurance – Contracted Provider		21,791.37		21,791.37
220 Social Security Contributions		6,701.87		6,701.87
230 PSERS Retirement Contributions		25,870.71		25,870.71
250 Unemployment Compensation		30.47		30.47
260 Workers' Compensation		336.62		336.62
291 Other Retirement Plans		400.00		400.00
Total Personnel Services – Employee Benefits		\$55,131.04		\$55,131.04
500 Other Purchased Services				
510 Student Transportation Services		30.16		30.16
Total Other Purchased Services		\$30.16		\$30.16
600 Supplies				
610 General Supplies		587.05		587.05
Total Supplies		\$587.05		\$587.05
Total 1270 Multi-Handicapped Support		\$144,065.63		\$144,065.63

General Fund (10)

1290 Special Programs - Other Support

100 Personnel Services – Salaries

	<u>Elementary</u>	<u>Secondary</u>	<u>Federal</u>	<u>Total</u>
100 Personnel Services – Salaries	8,279.37	8,279.37		16,558.74

Total Personnel Services – Salaries	\$8,279.37	\$8,279.37		\$16,558.74
--	-------------------	-------------------	--	--------------------

200 Personnel Services – Employee Benefits

220 Social Security Contributions	746.28	746.27		1,492.55
-----------------------------------	--------	--------	--	----------

230 PSERS Retirement Contributions	2,486.31	2,486.30		4,972.61
------------------------------------	----------	----------	--	----------

250 Unemployment Compensation	16.95	16.94		33.89
-------------------------------	-------	-------	--	-------

260 Workers' Compensation	31.42	31.41		62.83
---------------------------	-------	-------	--	-------

Total Personnel Services – Employee Benefits	\$3,280.96	\$3,280.92		\$6,561.88
---	-------------------	-------------------	--	-------------------

300 Purchased Professional and Technical Services

340 Technical Services			130.00	130.00
------------------------	--	--	--------	--------

Total Purchased Professional and Technical Services			\$130.00	\$130.00
--	--	--	-----------------	-----------------

500 Other Purchased Services

510 Student Transportation Services	112.50	112.50		225.00
-------------------------------------	--------	--------	--	--------

562 Tuition To Pennsylvania Charter Schools	71,512.07	71,512.06		143,024.13
---	-----------	-----------	--	------------

567 Tuition To Approved Private Schools (APS) and PA Chartered Schools for the Deaf and Blind	6,213.99	6,213.98		12,427.97
---	----------	----------	--	-----------

580 Travel	46.44	46.44		92.88
------------	-------	-------	--	-------

Total Other Purchased Services	\$77,885.00	\$77,884.98		\$155,769.98
---------------------------------------	--------------------	--------------------	--	---------------------

600 Supplies

610 General Supplies	58.70	58.70		117.40
----------------------	-------	-------	--	--------

630 Food	197.79	197.79		395.58
----------	--------	--------	--	--------

Total Supplies	\$256.49	\$256.49		\$512.98
-----------------------	-----------------	-----------------	--	-----------------

Total 1290 Special Programs - Other Support	\$89,701.82	\$89,701.76	\$130.00	\$179,533.58
--	--------------------	--------------------	-----------------	---------------------

General Fund (10)

1300 Vocational Education

100 Personnel Services – Salaries

	<u>Elementary</u>	<u>Secondary</u>	<u>Federal</u>	<u>Total</u>
100 Personnel Services – Salaries		716,752.16		716,752.16
Total Personnel Services – Salaries		\$716,752.16		\$716,752.16

200 Personnel Services – Employee Benefits

210 Group Insurance – Contracted Provider		183,068.26		183,068.26
220 Social Security Contributions		53,991.01		53,991.01
230 PSERS Retirement Contributions		213,717.17		213,717.17
250 Unemployment Compensation		185.86		185.86
260 Workers' Compensation		2,722.75		2,722.75
291 Other Retirement Plans		3,946.00		3,946.00
Total Personnel Services – Employee Benefits		\$457,631.05		\$457,631.05

500 Other Purchased Services

510 Student Transportation Services		1,124.80	1,934.00	3,058.80
580 Travel		1,441.80		1,441.80
Total Other Purchased Services		\$2,566.60	\$1,934.00	\$4,500.60

600 Supplies

610 General Supplies		14,750.18	5,309.56	20,059.74
630 Food		9,009.97		9,009.97
640 Books and Periodicals		3,517.84		3,517.84
Total Supplies		\$27,277.99	\$5,309.56	\$32,587.55

700 Property

752 Capital Equipment – Original and Additional		9,959.17	2,160.00	12,119.17
762 Capitalized Equipment - Replacement		25,097.08	21,414.00	46,511.08
Total Property		\$35,056.25	\$23,574.00	\$58,630.25
Total 1300 Vocational Education		\$1,239,284.05	\$30,817.56	\$1,270,101.61

General Fund (10)

1400 Other Instructional Programs – Elementary / Secondary

	<u>Elementary</u>	<u>Secondary</u>	<u>Federal</u>	<u>Total</u>
100 Personnel Services – Salaries				
100 Personnel Services – Salaries		44,314.88		44,314.88
Total Personnel Services – Salaries		\$44,314.88		\$44,314.88
200 Personnel Services – Employee Benefits				
210 Group Insurance – Contracted Provider		6,827.93		6,827.93
220 Social Security Contributions		3,353.28		3,353.28
230 PSERS Retirement Contributions		13,307.77		13,307.77
250 Unemployment Compensation		107.10		107.10
260 Workers' Compensation		243.61		243.61
Total Personnel Services – Employee Benefits		\$23,839.69		\$23,839.69
300 Purchased Professional and Technical Services				
322 Professional Educational Services – lus		13,659.38		13,659.38
330 Other Professional Services		10,977.00		10,977.00
Total Purchased Professional and Technical Services		\$24,636.38		\$24,636.38
400 Purchased Property Services				
440 Rentals		11,680.00		11,680.00
Total Purchased Property Services		\$11,680.00		\$11,680.00
500 Other Purchased Services				
520 Insurance – General		2,102.00		2,102.00
561 Tuition To Other School Districts Within the State	1,820.35	12,763.90		14,584.25
563 Tuition To Nonpublic Schools		2,367.00		2,367.00
569 Tuition – Other	280.00	260.00		540.00
580 Travel		3,354.76		3,354.76
Total Other Purchased Services	\$2,100.35	\$20,847.66		\$22,948.01
600 Supplies				
610 General Supplies		1,260.68		1,260.68
Total Supplies		\$1,260.68		\$1,260.68
Total 1400 Other Instructional Programs – Elementary / Secondary	\$2,100.35	\$126,579.29		\$128,679.64

General Fund (10)

1410 Drivers' Education

	<u>Elementary</u>	<u>Secondary</u>	<u>Federal</u>	<u>Total</u>
100 Personnel Services – Salaries				
100 Personnel Services – Salaries		36,774.88		36,774.88
Total Personnel Services – Salaries		\$36,774.88		\$36,774.88
200 Personnel Services – Employee Benefits				
210 Group Insurance – Contracted Provider		6,827.93		6,827.93
220 Social Security Contributions		2,776.47		2,776.47
230 PSERS Retirement Contributions		11,043.50		11,043.50
250 Unemployment Compensation		42.68		42.68
260 Workers' Compensation		202.14		202.14
Total Personnel Services – Employee Benefits		\$20,892.72		\$20,892.72
400 Purchased Property Services				
440 Rentals		11,680.00		11,680.00
Total Purchased Property Services		\$11,680.00		\$11,680.00
500 Other Purchased Services				
520 Insurance – General		2,102.00		2,102.00
Total Other Purchased Services		\$2,102.00		\$2,102.00
600 Supplies				
610 General Supplies		1,260.68		1,260.68
Total Supplies		\$1,260.68		\$1,260.68
Total 1410 Drivers' Education		\$72,710.28		\$72,710.28

LEA : 117596003 Northern Tioga SD

Printed 12/14/2017 9:13:58 AM

General Fund (10)

1420 Summer School

Elementary

Secondary

Federal

Total

500 Other Purchased Services

563 Tuition To Nonpublic Schools

2,367.00

2,367.00

Total Other Purchased Services

\$2,367.00

\$2,367.00

Total 1420 Summer School

\$2,367.00

\$2,367.00

General Fund (10)

1430 Homebound Instruction

100 Personnel Services – Salaries

100 Personnel Services – Salaries

Total Personnel Services – Salaries

200 Personnel Services – Employee Benefits

220 Social Security Contributions

230 PSERS Retirement Contributions

250 Unemployment Compensation

260 Workers' Compensation

Total Personnel Services – Employee Benefits

500 Other Purchased Services

569 Tuition – Other

580 Travel

Total Other Purchased Services

Total 1430 Homebound Instruction

	<u>Elementary</u>	<u>Secondary</u>	<u>Federal</u>	<u>Total</u>
		7,540.00		7,540.00
		\$7,540.00		\$7,540.00
		576.81		576.81
		2,264.27		2,264.27
		64.42		64.42
		41.47		41.47
		\$2,946.97		\$2,946.97
	280.00	260.00		540.00
		3,354.76		3,354.76
	\$280.00	\$3,614.76		\$3,894.76
	\$280.00	\$14,101.73		\$14,381.73

General Fund (10)

1440 Alternative Regular Education Programs

Elementary Secondary Federal Total

300 Purchased Professional and Technical Services

322 Professional Educational Services – Ius 13,659.38 13,659.38

330 Other Professional Services 10,977.00 10,977.00

Total Purchased Professional and Technical Services \$24,636.38 \$24,636.38

500 Other Purchased Services

561 Tuition To Other School Districts Within the State 1,820.35 12,763.90 14,584.25

Total Other Purchased Services \$1,820.35 \$12,763.90 \$14,584.25

Total 1440 Alternative Regular Education Programs \$1,820.35 \$37,400.28 \$39,220.63

General Fund (10)

1441 Adjudicated / Court-Placed Programs

500 Other Purchased Services

561 Tuition To Other School Districts Within the State

Total Other Purchased Services

Total 1441 Adjudicated / Court-Placed Programs

	<u>Elementary</u>	<u>Secondary</u>	<u>Federal</u>	<u>Total</u>
561 Tuition To Other School Districts Within the State	1,820.35	8,584.38		10,404.73
Total Other Purchased Services	\$1,820.35	\$8,584.38		\$10,404.73
Total 1441 Adjudicated / Court-Placed Programs	\$1,820.35	\$8,584.38		\$10,404.73

General Fund (10)

1442 Alternative Education Programs

300 Purchased Professional and Technical Services

322 Professional Educational Services – lus

330 Other Professional Services

Total Purchased Professional and Technical Services

Elementary

Secondary

Federal

Total

13,659.38

13,659.38

10,977.00

10,977.00

\$24,636.38

\$24,636.38

500 Other Purchased Services

561 Tuition To Other School Districts Within the State

Total Other Purchased Services

4,179.52

4,179.52

\$4,179.52

\$4,179.52

Total 1442 Alternative Education Programs

\$28,815.90

\$28,815.90

General Fund (10)

1800 Pre-Kindergarten

Elementary

Secondary

Federal

Total

100 Personnel Services – Salaries

100 Personnel Services – Salaries

214,446.97

Total Personnel Services – Salaries

\$214,446.97

200 Personnel Services – Employee Benefits

210 Group Insurance – Contracted Provider

52,566.34

220 Social Security Contributions

16,295.33

230 PSERS Retirement Contributions

64,128.22

250 Unemployment Compensation

551.94

260 Workers' Compensation

1,182.01

291 Other Retirement Plans

436.00

Total Personnel Services – Employee Benefits

\$135,159.84

Total 1800 Pre-Kindergarten

\$349,606.81

LEA : 117596003 Northern Tioga SD

Printed 12/14/2017 9:13:58 AM

General Fund (10)

1801 Pre-K Instruction

Elementary

Secondary

Federal

Total

100 Personnel Services – Salaries

100 Personnel Services – Salaries

214,446.97

Total Personnel Services – Salaries

\$214,446.97

200 Personnel Services – Employee Benefits

210 Group Insurance – Contracted Provider

52,566.34

220 Social Security Contributions

16,295.33

230 PSERS Retirement Contributions

64,128.22

250 Unemployment Compensation

551.94

260 Workers' Compensation

1,182.01

291 Other Retirement Plans

436.00

Total Personnel Services – Employee Benefits

\$135,159.84

Total 1801 Pre-K Instruction

\$349,606.81

General Fund (10)

2000 Support Services

Total

100 Personnel Services – Salaries

100 Personnel Services – Salaries 3,075,363.44

Total Personnel Services – Salaries \$3,075,363.44

200 Personnel Services – Employee Benefits

210 Group Insurance – Contracted Provider 835,662.99

220 Social Security Contributions 231,441.37

230 PSERS Retirement Contributions 920,615.85

240 Tuition Reimbursement 78,167.25

250 Unemployment Compensation 1,260.77

260 Workers' Compensation 12,341.89

291 Other Retirement Plans 8,537.00

299 All Other Employee Benefits 1,000.00

Total Personnel Services – Employee Benefits \$2,089,027.12

300 Purchased Professional and Technical Services

310 Official / Administrative Services 27,568.18

330 Other Professional Services 70,246.52

340 Technical Services 130,190.71

390 Other Purchased Professional and Technical Services 824.00

Total Purchased Professional and Technical Services \$228,829.41

400 Purchased Property Services

410 Cleaning Services 39,685.86

420 Utility Services 99,690.80

430 Repairs and Maintenance Services 78,542.17

440 Rentals 87,740.18

Total Purchased Property Services \$305,659.01

500 Other Purchased Services

510 Student Transportation Services 577.00

513 Contracted Carriers 1,882,999.67

516 Student Transportation Services From the IU 23,053.22

520 Insurance – General 16,587.49

523 General Property and Liability Insurance 141,781.00

530 Communications 53,160.07

549 Other Advertising/Public Relations 11,105.11

550 Printing and Binding 24,688.27

580 Travel 102,228.32

591 Services Purchased Locally 1,943.69

599 Other Miscellaneous Purchased Services 2,713.36

Total Other Purchased Services \$2,260,837.20

600 Supplies

610 General Supplies 212,335.54

620 Energy 409,249.61

630 Food 10,169.62

640 Books and Periodicals 105,629.84

650 Supplies & Fees – Technology Related 13,586.54

LEA : 117596003 Northern Tioga SD

Printed 12/14/2017 9:14:00 AM

General Fund (10)

2000 Support Services

Total Supplies Total
\$750,971.15

700 Property

758 Capitalized Technology Software - Original 41,906.85

762 Capitalized Equipment - Replacement 21,729.20

768 Capitalized Technology Software - Replacement 69,290.09

Total Property **\$132,926.14**

800 Other Objects

810 Dues and Fees 17,822.84

890 Miscellaneous Expenditures 90.00

Total Other Objects **\$17,912.84**

Total 2000 Support Services **\$8,861,526.31**

General Fund (10)

2100 Support Services – Students

100 Personnel Services – Salaries

	<u>Elementary</u>	<u>Secondary</u>	<u>Federal</u>	<u>Total</u>
100 Personnel Services – Salaries	49,375.47	251,141.27	158,803.33	519,548.10
Total Personnel Services – Salaries	\$49,375.47	\$251,141.27	\$158,803.33	\$519,548.10

200 Personnel Services – Employee Benefits

210 Group Insurance – Contracted Provider	11,697.41	89,130.76	52,285.91	156,315.44
220 Social Security Contributions	3,627.34	18,738.00	11,923.86	38,840.01
230 PSERS Retirement Contributions	14,827.39	75,497.47	47,688.61	156,063.95
250 Unemployment Compensation	(62.19)	78.16	237.62	269.44
260 Workers' Compensation	106.88	952.78	873.56	2,264.59
291 Other Retirement Plans		258.00		258.00
Total Personnel Services – Employee Benefits	\$30,196.83	\$184,655.17	\$113,009.56	\$354,011.43

400 Purchased Property Services

430 Repairs and Maintenance Services	0.02	3.19		3.21
440 Rentals		1,503.34		1,503.34
Total Purchased Property Services	\$0.02	\$1,506.53		\$1,506.55

500 Other Purchased Services

510 Student Transportation Services		577.00		577.00
530 Communications		2,443.43		2,443.43
580 Travel	898.39	612.23		2,264.19
Total Other Purchased Services	\$898.39	\$3,632.66		\$5,284.62

600 Supplies

610 General Supplies	889.36	1,298.06		2,187.42
630 Food		380.00		380.00
Total Supplies	\$889.36	\$1,678.06		\$2,567.42

800 Other Objects

810 Dues and Fees	326.00	137.00		913.00
Total Other Objects	\$326.00	\$137.00		\$913.00

Total 2100 Support Services – Students

	\$81,686.07	\$442,750.69	\$271,812.89	\$883,831.12
--	--------------------	---------------------	---------------------	---------------------

General Fund (10)

2120 Guidance Services

	<u>Elementary</u>	<u>Secondary</u>	<u>Federal</u>	<u>Total</u>
100 Personnel Services – Salaries				
100 Personnel Services – Salaries	13,746.60	215,512.40	47,145.00	276,404.00
Total Personnel Services – Salaries	\$13,746.60	\$215,512.40	\$47,145.00	\$276,404.00
200 Personnel Services – Employee Benefits				
210 Group Insurance – Contracted Provider	2,273.64	79,707.00	16,282.61	98,263.25
220 Social Security Contributions	1,023.10	16,133.76	3,510.13	20,666.99
230 PSERS Retirement Contributions	4,128.08	64,798.16	14,157.59	83,083.83
250 Unemployment Compensation	(72.19)	68.17	85.82	81.80
260 Workers' Compensation	(28.31)	817.59	259.34	1,048.62
291 Other Retirement Plans		258.00		258.00
Total Personnel Services – Employee Benefits	\$7,324.32	\$161,782.68	\$34,295.49	\$203,402.49
400 Purchased Property Services				
430 Repairs and Maintenance Services	0.02	3.19		3.21
440 Rentals		1,503.34		1,503.34
Total Purchased Property Services	\$0.02	\$1,506.53		\$1,506.55
500 Other Purchased Services				
510 Student Transportation Services		577.00		577.00
530 Communications		2,443.43		2,443.43
580 Travel	354.84	68.69		423.53
Total Other Purchased Services	\$354.84	\$3,089.12		\$3,443.96
600 Supplies				
610 General Supplies	144.85	553.56		698.41
630 Food		380.00		380.00
Total Supplies	\$144.85	\$933.56		\$1,078.41
800 Other Objects				
810 Dues and Fees	189.00			189.00
Total Other Objects	\$189.00			\$189.00
Total 2120 Guidance Services	\$21,759.63	\$382,824.29	\$81,440.49	\$486,024.41

General Fund (10)

2140 Psychological Services

	<u>Elementary</u>	<u>Secondary</u>	<u>Federal</u>	<u>Total</u>
100 Personnel Services – Salaries				
100 Personnel Services – Salaries	35,628.87	35,628.87		71,257.74
Total Personnel Services – Salaries	\$35,628.87	\$35,628.87		\$71,257.74
200 Personnel Services – Employee Benefits				
210 Group Insurance – Contracted Provider	9,423.77	9,423.76		18,847.53
220 Social Security Contributions	2,604.24	2,604.24		5,208.48
230 PSERS Retirement Contributions	10,699.31	10,699.31		21,398.62
250 Unemployment Compensation	10.00	9.99		19.99
260 Workers' Compensation	135.19	135.19		270.38
Total Personnel Services – Employee Benefits	\$22,872.51	\$22,872.49		\$45,745.00
500 Other Purchased Services				
580 Travel	543.55	543.54		1,087.09
Total Other Purchased Services	\$543.55	\$543.54		\$1,087.09
600 Supplies				
610 General Supplies	744.51	744.50		1,489.01
Total Supplies	\$744.51	\$744.50		\$1,489.01
800 Other Objects				
810 Dues and Fees	137.00	137.00		274.00
Total Other Objects	\$137.00	\$137.00		\$274.00
Total 2140 Psychological Services	\$59,926.44	\$59,926.40		\$119,852.84

General Fund (10)

2160 Social Work Services

Elementary

Secondary

Federal

Total

100 Personnel Services – Salaries

100 Personnel Services – Salaries

111,658.33

171,886.36

Total Personnel Services – Salaries

\$111,658.33

\$171,886.36

200 Personnel Services – Employee Benefits

210 Group Insurance – Contracted Provider

36,003.30

39,204.66

220 Social Security Contributions

8,413.73

12,964.54

230 PSERS Retirement Contributions

33,531.02

51,581.50

250 Unemployment Compensation

151.80

167.65

260 Workers' Compensation

614.22

945.59

Total Personnel Services – Employee Benefits

\$78,714.07

\$104,863.94

500 Other Purchased Services

580 Travel

753.57

Total Other Purchased Services

\$753.57

800 Other Objects

810 Dues and Fees

450.00

Total Other Objects

\$450.00

Total 2160 Social Work Services

\$190,372.40

\$277,953.87

General Fund (10)

2200 Support Services – Instructional Staff

	<u>Elementary</u>	<u>Secondary</u>	<u>Federal</u>	<u>Total</u>
100 Personnel Services – Salaries				
100 Personnel Services – Salaries	296,518.08	232,744.04	65,309.30	594,571.42
Total Personnel Services – Salaries	\$296,518.08	\$232,744.04	\$65,309.30	\$594,571.42
200 Personnel Services – Employee Benefits				
210 Group Insurance – Contracted Provider	66,764.94	57,867.06	497.34	125,129.34
220 Social Security Contributions	22,429.58	17,572.42	5,014.19	45,016.19
230 PSERS Retirement Contributions	86,821.98	69,996.30	19,612.46	176,430.74
240 Tuition Reimbursement	30,086.00	40,392.25		70,478.25
250 Unemployment Compensation	194.80	112.36	88.97	396.13
260 Workers' Compensation	1,342.51	1,074.50	359.24	2,776.25
291 Other Retirement Plans	100.00			100.00
Total Personnel Services – Employee Benefits	\$207,739.81	\$187,014.89	\$25,572.20	\$420,326.90
300 Purchased Professional and Technical Services				
330 Other Professional Services	2,568.58	2,331.42		4,900.00
340 Technical Services	9,814.24	137.71		9,951.95
390 Other Purchased Professional and Technical Services	431.94	392.06		824.00
Total Purchased Professional and Technical Services	\$12,814.76	\$2,861.19		\$15,675.95
400 Purchased Property Services				
430 Repairs and Maintenance Services	9,283.26	8,426.49		17,709.75
440 Rentals	2,021.16	1,903.42		3,924.58
Total Purchased Property Services	\$11,304.42	\$10,329.91		\$21,634.33
500 Other Purchased Services				
530 Communications	3,656.05	3,534.29		7,190.34
580 Travel	17,556.39	21,690.60	28,821.22	68,068.21
591 Services Purchased Locally	770.82	1,172.87		1,943.69
599 Other Miscellaneous Purchased Services	1,670.41	1,042.95		2,713.36
Total Other Purchased Services	\$23,653.67	\$27,440.71	\$28,821.22	\$79,915.60
600 Supplies				
610 General Supplies	15,024.93	12,185.22		27,210.15
630 Food	2,615.36	2,397.32		5,012.68
640 Books and Periodicals	55,540.61	47,553.11		103,093.72
650 Supplies & Fees – Technology Related			8,452.50	8,452.50
Total Supplies	\$73,180.90	\$62,135.65	\$8,452.50	\$143,769.05
700 Property				
758 Capitalized Technology Software - Original	3,075.66	2,791.69	36,039.50	41,906.85
768 Capitalized Technology Software - Replacement	4,446.68	5,805.44		10,252.12
Total Property	\$7,522.34	\$8,597.13	\$36,039.50	\$52,158.97
800 Other Objects				
810 Dues and Fees	665.26	628.74		1,294.00
Total Other Objects	\$665.26	\$628.74		\$1,294.00
Total 2200 Support Services – Instructional Staff	\$633,399.24	\$531,752.26	\$164,194.72	\$1,329,346.22

LEA : 117596003 Northern Tioga SD

Printed 12/14/2017 9:14:00 AM

Page - 8 of 38

General Fund (10)**2220 Technology Support Services**

	<u>Elementary</u>	<u>Secondary</u>	<u>Federal</u>	<u>Total</u>
100 Personnel Services – Salaries				
100 Personnel Services – Salaries	79,198.72	61,924.80		141,123.52
Total Personnel Services – Salaries	\$79,198.72	\$61,924.80		\$141,123.52
200 Personnel Services – Employee Benefits				
210 Group Insurance – Contracted Provider	22,818.36	20,710.91		43,529.27
220 Social Security Contributions	5,916.54	4,615.23		10,531.77
230 PSERS Retirement Contributions	23,886.76	18,690.08		42,576.84
250 Unemployment Compensation	20.60	19.46		40.06
260 Workers' Compensation	300.66	223.24		523.90
Total Personnel Services – Employee Benefits	\$52,942.92	\$44,258.92		\$97,201.84
300 Purchased Professional and Technical Services				
330 Other Professional Services	2,568.58	2,331.42		4,900.00
340 Technical Services	151.73	137.71		289.44
390 Other Purchased Professional and Technical Services	431.94	392.06		824.00
Total Purchased Professional and Technical Services	\$3,152.25	\$2,861.19		\$6,013.44
400 Purchased Property Services				
430 Repairs and Maintenance Services	9,220.71	8,369.90		17,590.61
Total Purchased Property Services	\$9,220.71	\$8,369.90		\$17,590.61
500 Other Purchased Services				
530 Communications	1,297.29	1,181.60		2,478.89
580 Travel	1,953.05	1,772.78		3,725.83
Total Other Purchased Services	\$3,250.34	\$2,954.38		\$6,204.72
600 Supplies				
610 General Supplies	8,542.50	5,060.44		13,602.94
640 Books and Periodicals	18,489.82	16,782.61		35,272.43
650 Supplies & Fees – Technology Related			8,452.50	8,452.50
Total Supplies	\$27,032.32	\$21,843.05	\$8,452.50	\$57,327.87
700 Property				
758 Capitalized Technology Software - Original	3,075.66	2,791.69	36,039.50	41,906.85
768 Capitalized Technology Software - Replacement	4,446.68	5,805.44		10,252.12
Total Property	\$7,522.34	\$8,597.13	\$36,039.50	\$52,158.97
Total 2220 Technology Support Services	\$182,319.60	\$150,809.37	\$44,492.00	\$377,620.97

General Fund (10)

	<u>Elementary</u>	<u>Secondary</u>	<u>Federal</u>	<u>Total</u>
2250 School Library Services				
100 Personnel Services – Salaries				
100 Personnel Services – Salaries	93,894.92	55,495.20		149,390.12
Total Personnel Services – Salaries	\$93,894.92	\$55,495.20		\$149,390.12
200 Personnel Services – Employee Benefits				
210 Group Insurance – Contracted Provider	24,767.34	19,291.38		44,058.72
220 Social Security Contributions	7,162.86	4,222.70		11,385.56
230 PSERS Retirement Contributions	27,811.49	16,635.20		44,446.69
250 Unemployment Compensation	50.77	23.98		74.75
260 Workers' Compensation	356.60	210.52		567.12
291 Other Retirement Plans	100.00			100.00
Total Personnel Services – Employee Benefits	\$60,249.06	\$40,383.78		\$100,632.84
400 Purchased Property Services				
430 Repairs and Maintenance Services		(5.94)		(5.94)
Total Purchased Property Services		(\$5.94)		(\$5.94)
600 Supplies				
610 General Supplies	2,499.02	3,147.53		5,646.55
640 Books and Periodicals	28,069.80	22,395.13		50,464.93
Total Supplies	\$30,568.82	\$25,542.66		\$56,111.48
800 Other Objects				
810 Dues and Fees	30.00	30.00		60.00
Total Other Objects	\$30.00	\$30.00		\$60.00
Total 2250 School Library Services	\$184,742.80	\$121,445.70		\$306,188.50

General Fund (10)

	<u>Elementary</u>	<u>Secondary</u>	<u>Federal</u>	<u>Total</u>
2260 Instruction and Curriculum Development Services				
100 Personnel Services – Salaries				
100 Personnel Services – Salaries	110,323.76	106,781.36	64,904.30	282,009.42
Total Personnel Services – Salaries	\$110,323.76	\$106,781.36	\$64,904.30	\$282,009.42
200 Personnel Services – Employee Benefits				
210 Group Insurance – Contracted Provider	19,179.24	17,864.77	497.34	37,541.35
220 Social Security Contributions	8,347.97	8,080.96	4,983.21	21,412.14
230 PSERS Retirement Contributions	33,832.20	32,751.28	19,490.84	86,074.32
250 Unemployment Compensation	21.09	19.78	85.80	126.67
260 Workers' Compensation	613.12	593.72	357.00	1,563.84
Total Personnel Services – Employee Benefits	\$61,993.62	\$59,310.51	\$25,414.19	\$146,718.32
300 Purchased Professional and Technical Services				
340 Technical Services	9,662.51			9,662.51
Total Purchased Professional and Technical Services	\$9,662.51			\$9,662.51
400 Purchased Property Services				
430 Repairs and Maintenance Services	62.55	62.53		125.08
440 Rentals	2,021.16	1,903.42		3,924.58
Total Purchased Property Services	\$2,083.71	\$1,965.95		\$4,049.66
500 Other Purchased Services				
530 Communications	2,358.76	2,352.69		4,711.45
580 Travel	2,350.90	2,251.51		4,602.41
Total Other Purchased Services	\$4,709.66	\$4,604.20		\$9,313.86
600 Supplies				
610 General Supplies	3,037.62	2,962.20		5,999.82
630 Food	151.26	137.92		289.18
640 Books and Periodicals	8,980.99	8,375.37		17,356.36
Total Supplies	\$12,169.87	\$11,475.49		\$23,645.36
800 Other Objects				
810 Dues and Fees	635.26	598.74		1,234.00
Total Other Objects	\$635.26	\$598.74		\$1,234.00
Total 2260 Instruction and Curriculum Development Services	\$201,578.39	\$184,736.25	\$90,318.49	\$476,633.13

General Fund (10)

2270 Instructional Staff Professional Development Services

	<u>Elementary</u>	<u>Secondary</u>	<u>Federal</u>	<u>Total</u>
100 Personnel Services – Salaries				
100 Personnel Services – Salaries	13,100.68	8,542.68	405.00	22,048.36
Total Personnel Services – Salaries	\$13,100.68	\$8,542.68	\$405.00	\$22,048.36
200 Personnel Services – Employee Benefits				
220 Social Security Contributions	1,002.21	653.53	30.98	1,686.72
230 PSERS Retirement Contributions	1,291.53	1,919.74	121.62	3,332.89
240 Tuition Reimbursement	30,086.00	40,392.25		70,478.25
250 Unemployment Compensation	102.34	49.14	3.17	154.65
260 Workers' Compensation	72.13	47.02	2.24	121.39
Total Personnel Services – Employee Benefits	\$32,554.21	\$43,061.68	\$158.01	\$75,773.90
500 Other Purchased Services				
580 Travel	13,252.44	17,666.31	28,821.22	59,739.97
591 Services Purchased Locally	770.82	1,172.87		1,943.69
599 Other Miscellaneous Purchased Services	1,670.41	1,042.95		2,713.36
Total Other Purchased Services	\$15,693.67	\$19,882.13	\$28,821.22	\$64,397.02
600 Supplies				
610 General Supplies	945.79	1,015.05		1,960.84
630 Food	2,464.10	2,259.40		4,723.50
Total Supplies	\$3,409.89	\$3,274.45		\$6,684.34
Total 2270 Instructional Staff Professional Development Services	\$64,758.45	\$74,760.94	\$29,384.23	\$168,903.62

General Fund (10)

	<u>Elementary</u>	<u>Secondary</u>	<u>Federal</u>	<u>Total</u>
2300 Support Services – Administration				
100 Personnel Services – Salaries				
100 Personnel Services – Salaries	386,387.88	328,519.90		895,441.11
Total Personnel Services – Salaries	\$386,387.88	\$328,519.90		\$895,441.11
200 Personnel Services – Employee Benefits				
210 Group Insurance – Contracted Provider	84,267.16	51,159.92		171,103.44
220 Social Security Contributions	29,301.79	24,819.06		67,261.61
230 PSERS Retirement Contributions	115,502.01	100,234.86		270,223.55
250 Unemployment Compensation	72.32	85.36		188.48
260 Workers' Compensation	1,170.92	1,404.42		3,262.24
291 Other Retirement Plans				7,629.00
Total Personnel Services – Employee Benefits	\$230,314.20	\$177,703.62		\$519,668.32
300 Purchased Professional and Technical Services				
310 Official / Administrative Services				27,568.18
330 Other Professional Services				38,857.60
340 Technical Services				44,985.94
Total Purchased Professional and Technical Services				\$111,411.72
400 Purchased Property Services				
430 Repairs and Maintenance Services	987.17	1,351.08		2,339.46
440 Rentals	18,657.95	16,401.79		40,177.04
Total Purchased Property Services	\$19,645.12	\$17,752.87		\$42,516.50
500 Other Purchased Services				
520 Insurance – General				16,237.49
530 Communications	13,590.37	12,110.94		33,595.75
549 Other Advertising/Public Relations				11,105.11
550 Printing and Binding				24,688.27
580 Travel	3,244.82	3,318.92		12,954.06
Total Other Purchased Services	\$16,835.19	\$15,429.86		\$98,580.68
600 Supplies				
610 General Supplies	4,038.85	1,074.67		11,179.31
630 Food	1,703.18	1,285.77		4,118.31
640 Books and Periodicals				446.12
650 Supplies & Fees – Technology Related	2,338.80	2,795.24		5,134.04
Total Supplies	\$8,080.83	\$5,155.68		\$20,877.78
800 Other Objects				
810 Dues and Fees	1,518.00	918.00		15,025.84
Total Other Objects	\$1,518.00	\$918.00		\$15,025.84
Total 2300 Support Services – Administration	\$662,781.22	\$545,479.93		\$1,703,521.95

General Fund (10)

2310 Board Services

Elementary

Secondary

Federal

Total

100 Personnel Services – Salaries

100 Personnel Services – Salaries

1,115.78

Total Personnel Services – Salaries

\$1,115.78

200 Personnel Services – Employee Benefits

210 Group Insurance – Contracted Provider

34.00

220 Social Security Contributions

84.89

230 PSERS Retirement Contributions

335.07

250 Unemployment Compensation

4.21

260 Workers' Compensation

6.13

291 Other Retirement Plans

7,629.00

Total Personnel Services – Employee Benefits

\$8,093.30

300 Purchased Professional and Technical Services

330 Other Professional Services

16,559.00

Total Purchased Professional and Technical Services

\$16,559.00

400 Purchased Property Services

440 Rentals

2,558.65

Total Purchased Property Services

\$2,558.65

500 Other Purchased Services

520 Insurance – General

15,270.00

530 Communications

1,795.20

549 Other Advertising/Public Relations

11,105.11

550 Printing and Binding

24,688.27

580 Travel

1,470.28

Total Other Purchased Services

\$54,328.86

600 Supplies

610 General Supplies

2,848.05

630 Food

198.93

Total Supplies

\$3,046.98

800 Other Objects

810 Dues and Fees

10,165.84

Total Other Objects

\$10,165.84

Total 2310 Board Services

\$95,868.41

General Fund (10)

2330 Tax Assessment and Collection Services

Elementary

Secondary

Federal

Total

300 Purchased Professional and Technical Services

310 Official / Administrative Services

14,878.53

340 Technical Services

44,985.94

Total Purchased Professional and Technical Services

\$59,864.47

500 Other Purchased Services

520 Insurance – General

967.49

530 Communications

6,099.24

Total Other Purchased Services

\$7,066.73

Total 2330 Tax Assessment and Collection Services

\$66,931.20

General Fund (10)

2340 Staff Relations and Negotiations Services

Elementary

Secondary

Federal

Total

300 Purchased Professional and Technical Services

330 Other Professional Services

1,000.00

Total Purchased Professional and Technical Services

\$1,000.00

Total 2340 Staff Relations and Negotiations Services

\$1,000.00

General Fund (10)

2350 Legal and Accounting Services

Elementary

Secondary

Federal

Total

300 Purchased Professional and Technical Services

330 Other Professional Services

21,298.60

Total Purchased Professional and Technical Services

\$21,298.60

Total 2350 Legal and Accounting Services

\$21,298.60

General Fund (10)

	<u>Elementary</u>	<u>Secondary</u>	<u>Federal</u>	<u>Total</u>
2360 Office of the Superintendent / Executive Director Services				
100 Personnel Services – Salaries				
100 Personnel Services – Salaries				179,417.55
Total Personnel Services – Salaries				\$179,417.55
200 Personnel Services – Employee Benefits				
210 Group Insurance – Contracted Provider				35,642.36
220 Social Security Contributions				13,055.87
230 PSERS Retirement Contributions				54,151.61
250 Unemployment Compensation				26.59
260 Workers' Compensation				680.77
Total Personnel Services – Employee Benefits				\$103,557.20
400 Purchased Property Services				
430 Repairs and Maintenance Services				1.21
440 Rentals				2,558.65
Total Purchased Property Services				\$2,559.86
500 Other Purchased Services				
530 Communications	1,236.13	1,236.12		2,472.25
580 Travel				4,920.04
Total Other Purchased Services	\$1,236.13	\$1,236.12		\$7,392.29
600 Supplies				
610 General Supplies				3,217.74
630 Food				930.43
640 Books and Periodicals				446.12
Total Supplies				\$4,594.29
800 Other Objects				
810 Dues and Fees				2,424.00
Total Other Objects				\$2,424.00
Total 2360 Office of the Superintendent / Executive Director Services	\$1,236.13	\$1,236.12		\$299,945.19

General Fund (10)

2380 Office of the Principal Services

100 Personnel Services – Salaries

	<u>Elementary</u>	<u>Secondary</u>	<u>Federal</u>	<u>Total</u>
100 Personnel Services – Salaries	386,387.88	328,519.90		714,907.78
Total Personnel Services – Salaries	\$386,387.88	\$328,519.90		\$714,907.78

200 Personnel Services – Employee Benefits

210 Group Insurance – Contracted Provider	84,267.16	51,159.92		135,427.08
220 Social Security Contributions	29,301.79	24,819.06		54,120.85
230 PSERS Retirement Contributions	115,502.01	100,234.86		215,736.87
250 Unemployment Compensation	72.32	85.36		157.68
260 Workers' Compensation	1,170.92	1,404.42		2,575.34
Total Personnel Services – Employee Benefits	\$230,314.20	\$177,703.62		\$408,017.82

400 Purchased Property Services

430 Repairs and Maintenance Services	987.17	1,351.08		2,338.25
440 Rentals	18,657.95	16,401.79		35,059.74
Total Purchased Property Services	\$19,645.12	\$17,752.87		\$37,397.99

500 Other Purchased Services

530 Communications	12,354.24	10,874.82		23,229.06
580 Travel	3,244.82	3,318.92		6,563.74
Total Other Purchased Services	\$15,599.06	\$14,193.74		\$29,792.80

600 Supplies

610 General Supplies	4,038.85	1,074.67		5,113.52
630 Food	1,703.18	1,285.77		2,988.95
650 Supplies & Fees – Technology Related	2,338.80	2,795.24		5,134.04
Total Supplies	\$8,080.83	\$5,155.68		\$13,236.51

800 Other Objects

810 Dues and Fees	1,518.00	918.00		2,436.00
Total Other Objects	\$1,518.00	\$918.00		\$2,436.00

Total 2380 Office of the Principal Services

	\$661,545.09	\$544,243.81		\$1,205,788.90
--	---------------------	---------------------	--	-----------------------

LEA : 117596003 Northern Tioga SD

Printed 12/14/2017 9:14:00 AM

General Fund (10)

2390 Other Administration Services

Elementary

Secondary

Federal

Total

300 Purchased Professional and Technical Services

310 Official / Administrative Services

12,689.65

Total Purchased Professional and Technical Services

\$12,689.65

Total 2390 Other Administration Services

\$12,689.65

General Fund (10)

	<u>Elementary</u>	<u>Secondary</u>	<u>Federal</u>	<u>Total</u>
2400 Support Services – Pupil Health				
100 Personnel Services – Salaries				
100 Personnel Services – Salaries				139,778.44
Total Personnel Services – Salaries				\$139,778.44
200 Personnel Services – Employee Benefits				
210 Group Insurance – Contracted Provider				67,773.78
220 Social Security Contributions				10,391.13
230 PSERS Retirement Contributions				40,540.08
250 Unemployment Compensation				78.89
260 Workers' Compensation				532.32
291 Other Retirement Plans				550.00
Total Personnel Services – Employee Benefits				\$119,866.20
300 Purchased Professional and Technical Services				
330 Other Professional Services				3,317.72
Total Purchased Professional and Technical Services				\$3,317.72
500 Other Purchased Services				
580 Travel				61.93
Total Other Purchased Services				\$61.93
600 Supplies				
610 General Supplies				9,367.68
Total Supplies				\$9,367.68
Total 2400 Support Services – Pupil Health				\$272,391.97

General Fund (10)

2440 Nursing Services

	<u>Elementary</u>	<u>Secondary</u>	<u>Federal</u>	<u>Total</u>
100 <u>Personnel Services – Salaries</u>				
100 Personnel Services – Salaries				139,778.44
Total Personnel Services – Salaries				\$139,778.44
200 <u>Personnel Services – Employee Benefits</u>				
210 Group Insurance – Contracted Provider				67,773.78
220 Social Security Contributions				10,391.13
230 PSERS Retirement Contributions				40,540.08
250 Unemployment Compensation				78.89
260 Workers' Compensation				532.32
291 Other Retirement Plans				550.00
Total Personnel Services – Employee Benefits				\$119,866.20
300 <u>Purchased Professional and Technical Services</u>				
330 Other Professional Services				3,317.72
Total Purchased Professional and Technical Services				\$3,317.72
500 <u>Other Purchased Services</u>				
580 Travel				61.93
Total Other Purchased Services				\$61.93
600 <u>Supplies</u>				
610 General Supplies				9,367.68
Total Supplies				\$9,367.68
Total 2440 Nursing Services				\$272,391.97

General Fund (10)

2500 Support Services – Business

<u>Elementary</u>	<u>Secondary</u>	<u>Federal</u>	<u>Total</u>
-------------------	------------------	----------------	--------------

100 <u>Personnel Services – Salaries</u>			
100 Personnel Services – Salaries			213,745.98
Total Personnel Services – Salaries			\$213,745.98
200 <u>Personnel Services – Employee Benefits</u>			
210 Group Insurance – Contracted Provider			53,494.68
220 Social Security Contributions			16,241.47
230 PSERS Retirement Contributions			63,791.51
250 Unemployment Compensation			59.66
260 Workers' Compensation			810.89
299 All Other Employee Benefits			1,000.00
Total Personnel Services – Employee Benefits			\$135,398.21
300 <u>Purchased Professional and Technical Services</u>			
340 Technical Services			6,175.00
Total Purchased Professional and Technical Services			\$6,175.00
400 <u>Purchased Property Services</u>			
440 Rentals			2,436.22
Total Purchased Property Services			\$2,436.22
500 <u>Other Purchased Services</u>			
520 Insurance – General			350.00
530 Communications			4,910.79
580 Travel			2,656.41
Total Other Purchased Services			\$7,917.20
600 <u>Supplies</u>			
610 General Supplies			5,531.84
Total Supplies			\$5,531.84
800 <u>Other Objects</u>			
810 Dues and Fees			300.00
Total Other Objects			\$300.00
Total 2500 Support Services – Business			\$371,504.45

General Fund (10)

2510 Fiscal Services

Elementary Secondary Federal Total

100	<u>Personnel Services – Salaries</u>				
	100 Personnel Services – Salaries				136,918.22
Total Personnel Services – Salaries					\$136,918.22
200	<u>Personnel Services – Employee Benefits</u>				
	210 Group Insurance – Contracted Provider				36,585.10
	220 Social Security Contributions				10,462.83
	230 PSERS Retirement Contributions				41,373.99
	250 Unemployment Compensation				27.25
	260 Workers' Compensation				519.50
	299 All Other Employee Benefits				1,000.00
Total Personnel Services – Employee Benefits					\$89,968.67
500	<u>Other Purchased Services</u>				
	520 Insurance – General				350.00
	530 Communications				756.76
	580 Travel				2,656.41
Total Other Purchased Services					\$3,763.17
600	<u>Supplies</u>				
	610 General Supplies				1,522.36
Total Supplies					\$1,522.36
800	<u>Other Objects</u>				
	810 Dues and Fees				300.00
Total Other Objects					\$300.00
Total 2510 Fiscal Services					\$232,472.42

General Fund (10)

2511 Supervision of Fiscal Services - Head of Component

Elementary

Secondary

Federal

Total

100 Personnel Services – Salaries

100 Personnel Services – Salaries

105,236.65

Total Personnel Services – Salaries

\$105,236.65

200 Personnel Services – Employee Benefits

210 Group Insurance – Contracted Provider

17,316.64

220 Social Security Contributions

8,058.30

230 PSERS Retirement Contributions

31,804.46

250 Unemployment Compensation

13.62

260 Workers' Compensation

399.31

299 All Other Employee Benefits

1,000.00

Total Personnel Services – Employee Benefits

\$58,592.33

500 Other Purchased Services

520 Insurance – General

350.00

530 Communications

756.76

580 Travel

2,656.41

Total Other Purchased Services

\$3,763.17

600 Supplies

610 General Supplies

38.03

Total Supplies

\$38.03

800 Other Objects

810 Dues and Fees

300.00

Total Other Objects

\$300.00

Total 2511 Supervision of Fiscal Services - Head of Component

\$167,930.18

General Fund (10)

2514 Payroll Services

Elementary

Secondary

Federal

Total

100 Personnel Services – Salaries

100 Personnel Services – Salaries

31,681.57

Total Personnel Services – Salaries

\$31,681.57

200 Personnel Services – Employee Benefits

210 Group Insurance – Contracted Provider

19,268.46

220 Social Security Contributions

2,404.53

230 PSERS Retirement Contributions

9,569.53

250 Unemployment Compensation

13.63

260 Workers' Compensation

120.19

Total Personnel Services – Employee Benefits

\$31,376.34

600 Supplies

610 General Supplies

1,484.33

Total Supplies

\$1,484.33

Total 2514 Payroll Services

\$64,542.24

General Fund (10)

2590 Other Support Services – Business

Elementary

Secondary

Federal

Total

100 Personnel Services – Salaries

100 Personnel Services – Salaries

76,827.76

Total Personnel Services – Salaries

\$76,827.76

200 Personnel Services – Employee Benefits

210 Group Insurance – Contracted Provider

16,909.58

220 Social Security Contributions

5,778.64

230 PSERS Retirement Contributions

22,417.52

250 Unemployment Compensation

32.41

260 Workers' Compensation

291.39

Total Personnel Services – Employee Benefits

\$45,429.54

300 Purchased Professional and Technical Services

340 Technical Services

6,175.00

Total Purchased Professional and Technical Services

\$6,175.00

400 Purchased Property Services

440 Rentals

2,436.22

Total Purchased Property Services

\$2,436.22

500 Other Purchased Services

530 Communications

4,154.03

Total Other Purchased Services

\$4,154.03

600 Supplies

610 General Supplies

4,009.48

Total Supplies

\$4,009.48

Total 2590 Other Support Services – Business

\$139,032.03

General Fund (10)

	<u>Elementary</u>	<u>Secondary</u>	<u>Federal</u>	<u>Total</u>
2600 Operation and Maintenance of Plant Services				
100 Personnel Services – Salaries				
100 Personnel Services – Salaries				712,278.39
Total Personnel Services – Salaries				\$712,278.39
200 Personnel Services – Employee Benefits				
210 Group Insurance – Contracted Provider				261,846.31
220 Social Security Contributions				53,690.96
230 PSERS Retirement Contributions				213,566.02
250 Unemployment Compensation				268.17
260 Workers' Compensation				2,695.60
Total Personnel Services – Employee Benefits				\$532,067.06
300 Purchased Professional and Technical Services				
330 Other Professional Services				23,171.20
340 Technical Services				59,360.00
Total Purchased Professional and Technical Services				\$82,531.20
400 Purchased Property Services				
410 Cleaning Services				39,685.86
420 Utility Services				99,690.80
430 Repairs and Maintenance Services				58,321.60
Total Purchased Property Services				\$197,698.26
500 Other Purchased Services				
523 General Property and Liability Insurance				141,781.00
530 Communications				976.76
580 Travel				680.04
Total Other Purchased Services				\$143,437.80
600 Supplies				
610 General Supplies	76,888.00	77,477.54		154,365.54
620 Energy				409,249.61
Total Supplies	\$76,888.00	\$77,477.54		\$563,615.15
700 Property				
762 Capitalized Equipment - Replacement				21,729.20
768 Capitalized Technology Software - Replacement				59,037.97
Total Property				\$80,767.17
800 Other Objects				
810 Dues and Fees				290.00
Total Other Objects				\$290.00
Total 2600 Operation and Maintenance of Plant Services	\$76,888.00	\$77,477.54		\$2,312,685.03

General Fund (10)

2620 Operation of Buildings Services

100 Personnel Services – Salaries

100 Personnel Services – Salaries				554,362.10
-----------------------------------	--	--	--	------------

Total Personnel Services – Salaries				\$554,362.10
--	--	--	--	---------------------

200 Personnel Services – Employee Benefits

210 Group Insurance – Contracted Provider				208,578.19
---	--	--	--	------------

220 Social Security Contributions				41,836.57
-----------------------------------	--	--	--	-----------

230 PSERS Retirement Contributions				165,788.80
------------------------------------	--	--	--	------------

250 Unemployment Compensation				247.47
-------------------------------	--	--	--	--------

260 Workers' Compensation				2,102.72
---------------------------	--	--	--	----------

Total Personnel Services – Employee Benefits				\$418,553.75
---	--	--	--	---------------------

400 Purchased Property Services

410 Cleaning Services				32,258.86
-----------------------	--	--	--	-----------

430 Repairs and Maintenance Services				16,356.04
--------------------------------------	--	--	--	-----------

Total Purchased Property Services				\$48,614.90
--	--	--	--	--------------------

500 Other Purchased Services

523 General Property and Liability Insurance				141,781.00
--	--	--	--	------------

580 Travel				111.56
------------	--	--	--	--------

Total Other Purchased Services				\$141,892.56
---------------------------------------	--	--	--	---------------------

600 Supplies

610 General Supplies	26,042.78	23,074.36		49,117.14
----------------------	-----------	-----------	--	-----------

Total Supplies	\$26,042.78	\$23,074.36		\$49,117.14
-----------------------	--------------------	--------------------	--	--------------------

700 Property

762 Capitalized Equipment - Replacement				13,384.00
---	--	--	--	-----------

Total Property				\$13,384.00
-----------------------	--	--	--	--------------------

Total 2620 Operation of Buildings Services	\$26,042.78	\$23,074.36		\$1,225,924.45
---	--------------------	--------------------	--	-----------------------

LEA : 117596003 Northern Tioga SD

Printed 12/14/2017 9:14:00 AM

Page - 29 of 38

General Fund (10)

	<u>Elementary</u>	<u>Secondary</u>	<u>Federal</u>	<u>Total</u>
2690 Other Operation and Maintenance of Plant Services				
100 Personnel Services – Salaries				
100 Personnel Services – Salaries				157,916.29
Total Personnel Services – Salaries				\$157,916.29
200 Personnel Services – Employee Benefits				
210 Group Insurance – Contracted Provider				53,268.12
220 Social Security Contributions				11,854.39
230 PSERS Retirement Contributions				47,777.22
250 Unemployment Compensation				20.70
260 Workers' Compensation				592.88
Total Personnel Services – Employee Benefits				\$113,513.31
300 Purchased Professional and Technical Services				
330 Other Professional Services				23,171.20
340 Technical Services				59,360.00
Total Purchased Professional and Technical Services				\$82,531.20
400 Purchased Property Services				
410 Cleaning Services				7,427.00
420 Utility Services				99,690.80
430 Repairs and Maintenance Services				41,965.56
Total Purchased Property Services				\$149,083.36
500 Other Purchased Services				
530 Communications				976.76
580 Travel				568.48
Total Other Purchased Services				\$1,545.24
600 Supplies				
610 General Supplies	50,845.22	54,403.18		105,248.40
620 Energy				409,249.61
Total Supplies	\$50,845.22	\$54,403.18		\$514,498.01
700 Property				
762 Capitalized Equipment - Replacement				8,345.20
768 Capitalized Technology Software - Replacement				59,037.97
Total Property				\$67,383.17
800 Other Objects				
810 Dues and Fees				290.00
Total Other Objects				\$290.00
Total 2690 Other Operation and Maintenance of Plant Services	\$50,845.22	\$54,403.18		\$1,086,760.58

General Fund (10)

	<u>Elementary</u>	<u>Secondary</u>	<u>Federal</u>	<u>Total</u>
2700 Student Transportation Services				
300 <u>Purchased Professional and Technical Services</u>				
340 Technical Services				1,939.75
Total Purchased Professional and Technical Services				\$1,939.75
400 <u>Purchased Property Services</u>				
430 Repairs and Maintenance Services				168.15
Total Purchased Property Services				\$168.15
500 <u>Other Purchased Services</u>				
513 Contracted Carriers				1,882,999.67
516 Student Transportation Services From the IU				23,053.22
530 Communications				4,043.00
Total Other Purchased Services				\$1,910,095.89
600 <u>Supplies</u>				
610 General Supplies				2,465.60
640 Books and Periodicals				2,090.00
Total Supplies				\$4,555.60
Total 2700 Student Transportation Services				\$1,916,759.39

General Fund (10)

2750 Nonpublic Transportation

Elementary

Secondary

Federal

Total

500 Other Purchased Services

513 Contracted Carriers

128,675.90

Total Other Purchased Services

\$128,675.90

Total 2750 Nonpublic Transportation

\$128,675.90

General Fund (10)

	<u>Elementary</u>	<u>Secondary</u>	<u>Federal</u>	<u>Total</u>
2790 Other Student Transportation Services				
300 <u>Purchased Professional and Technical Services</u>				
340 Technical Services				1,939.75
Total Purchased Professional and Technical Services				\$1,939.75
400 <u>Purchased Property Services</u>				
430 Repairs and Maintenance Services				168.15
Total Purchased Property Services				\$168.15
500 <u>Other Purchased Services</u>				
513 Contracted Carriers				1,754,323.77
516 Student Transportation Services From the IU				23,053.22
530 Communications				4,043.00
Total Other Purchased Services				\$1,781,419.99
600 <u>Supplies</u>				
610 General Supplies				2,465.60
640 Books and Periodicals				2,090.00
Total Supplies				\$4,555.60
Total 2790 Other Student Transportation Services				\$1,788,083.49

General Fund (10)

2800 Support Services – Central

Elementary Secondary Federal Total

200	<u>Personnel Services – Employee Benefits</u>			
240	Tuition Reimbursement			7,689.00
Total Personnel Services – Employee Benefits				\$7,689.00
300	<u>Purchased Professional and Technical Services</u>			
340	Technical Services			7,778.07
Total Purchased Professional and Technical Services				\$7,778.07
400	<u>Purchased Property Services</u>			
440	Rentals			39,699.00
Total Purchased Property Services				\$39,699.00
500	<u>Other Purchased Services</u>			
580	Travel			15,543.48
Total Other Purchased Services				\$15,543.48
600	<u>Supplies</u>			
610	General Supplies			28.00
630	Food			658.63
Total Supplies				\$686.63
800	<u>Other Objects</u>			
890	Miscellaneous Expenditures			90.00
Total Other Objects				\$90.00
Total 2800 Support Services – Central				\$71,486.18

General Fund (10)

2830 Staff Services

Elementary

Secondary

Federal

Total

200 Personnel Services – Employee Benefits

240 Tuition Reimbursement

7,689.00

Total Personnel Services – Employee Benefits

\$7,689.00

500 Other Purchased Services

580 Travel

15,543.48

Total Other Purchased Services

\$15,543.48

600 Supplies

610 General Supplies

28.00

630 Food

658.63

Total Supplies

\$686.63

800 Other Objects

890 Miscellaneous Expenditures

90.00

Total Other Objects

\$90.00

Total 2830 Staff Services

\$24,009.11

LEA : 117596003 Northern Tioga SD

Printed 12/14/2017 9:14:00 AM

General Fund (10)

2832 Recruitment and Placement Services

Elementary

Secondary

Federal

Total

800 Other Objects

890 Miscellaneous Expenditures

90.00

Total Other Objects

\$90.00

Total 2832 Recruitment and Placement Services

\$90.00

General Fund (10)

2834 Staff Development Services – Non-Instructional, Certified Staff Only

Elementary

Secondary

Federal

Total

200 Personnel Services – Employee Benefits

240 Tuition Reimbursement

7,689.00

Total Personnel Services – Employee Benefits

\$7,689.00

500 Other Purchased Services

580 Travel

11,634.54

Total Other Purchased Services

\$11,634.54

600 Supplies

610 General Supplies

28.00

630 Food

56.28

Total Supplies

\$84.28

Total 2834 Staff Development Services – Non-Instructional, Certified Staff Only

\$19,407.82

General Fund (10)

2836 Staff Development Services – Non-Instructional, Non-Certified Staff Only

Elementary

Secondary

Federal

Total

500 Other Purchased Services

580 Travel 3,908.94

Total Other Purchased Services \$3,908.94

600 Supplies

630 Food 602.35

Total Supplies \$602.35

Total 2836 Staff Development Services – Non-Instructional, Non-Certified Staff Only \$4,511.29

General Fund (10)

	<u>Elementary</u>	<u>Secondary</u>	<u>Federal</u>	<u>Total</u>
2840 Data Processing Services				
300 <u>Purchased Professional and Technical Services</u>				
340 Technical Services				7,778.07
Total Purchased Professional and Technical Services				\$7,778.07
400 <u>Purchased Property Services</u>				
440 Rentals				39,699.00
Total Purchased Property Services				\$39,699.00
Total 2840 Data Processing Services				\$47,477.07

General Fund (10)

3000 Operation of Non-Instructional Services	<u>Total</u>
100 Personnel Services – Salaries	
100 Personnel Services – Salaries	273,496.53
Total Personnel Services – Salaries	\$273,496.53
200 Personnel Services – Employee Benefits	
220 Social Security Contributions	20,804.58
230 PSERS Retirement Contributions	61,105.19
250 Unemployment Compensation	1,209.57
260 Workers’ Compensation	1,504.64
Total Personnel Services – Employee Benefits	\$84,623.98
300 Purchased Professional and Technical Services	
330 Other Professional Services	21,000.00
390 Other Purchased Professional and Technical Services	43,732.00
Total Purchased Professional and Technical Services	\$64,732.00
400 Purchased Property Services	
430 Repairs and Maintenance Services	1,040.50
490 Other Purchased Property Services	5,000.00
Total Purchased Property Services	\$6,040.50
500 Other Purchased Services	
510 Student Transportation Services	95,248.97
530 Communications	701.11
580 Travel	4,751.10
Total Other Purchased Services	\$100,701.18
600 Supplies	
610 General Supplies	81,135.60
Total Supplies	\$81,135.60
700 Property	
762 Capitalized Equipment - Replacement	9,084.00
Total Property	\$9,084.00
800 Other Objects	
810 Dues and Fees	5,798.00
Total Other Objects	\$5,798.00
Total 3000 Operation of Non-Instructional Services	\$625,611.79

General Fund (10)

3200 Student Activities

Elementary Secondary Federal Total

100	<u>Personnel Services – Salaries</u>			
	100 Personnel Services – Salaries			267,546.53
Total Personnel Services – Salaries				\$267,546.53
200	<u>Personnel Services – Employee Benefits</u>			
	220 Social Security Contributions			20,349.00
	230 PSERS Retirement Contributions			59,318.30
	250 Unemployment Compensation			1,191.57
	260 Workers' Compensation			1,472.11
Total Personnel Services – Employee Benefits				\$82,330.98
300	<u>Purchased Professional and Technical Services</u>			
	330 Other Professional Services			21,000.00
	390 Other Purchased Professional and Technical Services			43,732.00
Total Purchased Professional and Technical Services				\$64,732.00
400	<u>Purchased Property Services</u>			
	430 Repairs and Maintenance Services			1,040.50
	490 Other Purchased Property Services			5,000.00
Total Purchased Property Services				\$6,040.50
500	<u>Other Purchased Services</u>			
	510 Student Transportation Services			95,248.97
	580 Travel			4,751.10
Total Other Purchased Services				\$100,000.07
600	<u>Supplies</u>			
	610 General Supplies			62,771.73
Total Supplies				\$62,771.73
700	<u>Property</u>			
	762 Capitalized Equipment - Replacement			9,084.00
Total Property				\$9,084.00
800	<u>Other Objects</u>			
	810 Dues and Fees			5,798.00
Total Other Objects				\$5,798.00
Total 3200 Student Activities				\$598,303.81

General Fund (10)

	<u>Elementary</u>	<u>Secondary</u>	<u>Federal</u>	<u>Total</u>
3300 Community Services				
100 Personnel Services – Salaries				
100 Personnel Services – Salaries				5,950.00
Total Personnel Services – Salaries				\$5,950.00
200 Personnel Services – Employee Benefits				
220 Social Security Contributions				455.58
230 PSERS Retirement Contributions				1,786.89
250 Unemployment Compensation				18.00
260 Workers' Compensation				32.53
Total Personnel Services – Employee Benefits				\$2,293.00
500 Other Purchased Services				
530 Communications				701.11
Total Other Purchased Services				\$701.11
600 Supplies				
610 General Supplies			13,546.78	18,363.87
Total Supplies			\$13,546.78	\$18,363.87
Total 3300 Community Services			\$13,546.78	\$27,307.98

General Fund (10)

4000 Facilities Acquisition, Construction and Improvement Services

Total

300 Purchased Professional and Technical Services

330 Other Professional Services

252,847.85

Total Purchased Professional and Technical Services

\$252,847.85

400 Purchased Property Services

430 Repairs and Maintenance Services

263,503.05

Total Purchased Property Services

\$263,503.05

600 Supplies

610 General Supplies

384.00

Total Supplies

\$384.00

700 Property

768 Capitalized Technology Software - Replacement

6,221.44

Total Property

\$6,221.44

Total 4000 Facilities Acquisition, Construction and Improvement Services

\$522,956.34

LEA : 117596003 Northern Tioga SD

Printed 12/14/2017 9:14:05 AM

General Fund (10)

4200 Existing Site Improvement Services

Elementary

Secondary

Federal

Total

400 Purchased Property Services

430 Repairs and Maintenance Services

8,367.84

Total Purchased Property Services

\$8,367.84

Total 4200 Existing Site Improvement Services

\$8,367.84

General Fund (10)

	<u>Elementary</u>	<u>Secondary</u>	<u>Federal</u>	<u>Total</u>
4600 Existing Building Improvement Services				
300 <u>Purchased Professional and Technical Services</u>				
330 Other Professional Services				252,847.85
Total Purchased Professional and Technical Services				\$252,847.85
400 <u>Purchased Property Services</u>				
430 Repairs and Maintenance Services				255,135.21
Total Purchased Property Services				\$255,135.21
600 <u>Supplies</u>				
610 General Supplies				384.00
Total Supplies				\$384.00
700 <u>Property</u>				
768 Capitalized Technology Software - Replacement				6,221.44
Total Property				\$6,221.44
Total 4600 Existing Building Improvement Services				\$514,588.50

General Fund (10)

5000 Other Expenditures and Financing Uses

Total

800 Other Objects

830 Interest 158,500.00

Total Other Objects \$158,500.00

900 Other Uses of Funds

910 Redemption of Principal 1,869,000.00

930 Fund Transfers 87,174.92

932 Capital Reserve Fund Transfers Applicable To Fund 32 1,238,000.00

Total Other Uses of Funds \$3,194,174.92

Total 5000 Other Expenditures and Financing Uses \$3,352,674.92

General Fund (10)

	<u>Elementary</u>	<u>Secondary</u>	<u>Federal</u>	<u>Total</u>
5100 Debt Service / Other Expenditures and Financing Uses				
800 Other Objects				
830 Interest				158,500.00
Total Other Objects				\$158,500.00
900 Other Uses of Funds				
910 Redemption of Principal				1,869,000.00
Total Other Uses of Funds				\$1,869,000.00
Total 5100 Debt Service / Other Expenditures and Financing Uses				\$2,027,500.00

LEA : 117596003 Northern Tioga SD

Printed 12/14/2017 9:14:07 AM

General Fund (10)

5110 Debt Service

Elementary

Secondary

Federal

Total

800 Other Objects

830 Interest

158,500.00

Total Other Objects

\$158,500.00

900 Other Uses of Funds

910 Redemption of Principal

1,869,000.00

Total Other Uses of Funds

\$1,869,000.00

Total 5110 Debt Service

\$2,027,500.00

LEA : 117596003 Northern Tioga SD

Printed 12/14/2017 9:14:07 AM

General Fund (10)

5200 Interfund Transfers – Out

Elementary

Secondary

Federal

Total

900 Other Uses of Funds

930 Fund Transfers

87,174.92

932 Capital Reserve Fund Transfers Applicable To Fund 32

1,238,000.00

Total Other Uses of Funds

\$1,325,174.92

Total 5200 Interfund Transfers – Out

\$1,325,174.92

LEA : 117596003 Northern Tioga SD

Printed 12/14/2017 9:14:07 AM

General Fund (10)

5230 Capital Projects Fund Transfers

Elementary

Secondary

Federal

Total

900 Other Uses of Funds

932 Capital Reserve Fund Transfers Applicable To Fund 32

1,238,000.00

Total Other Uses of Funds

\$1,238,000.00

Total 5230 Capital Projects Fund Transfers

\$1,238,000.00

LEA : 117596003 Northern Tioga SD

Printed 12/14/2017 9:14:07 AM

General Fund (10)

5250 Enterprise Fund Transfers

Elementary

Secondary

Federal

Total

900 Other Uses of Funds

930 Fund Transfers

87,174.92

Total Other Uses of Funds

\$87,174.92

Total 5250 Enterprise Fund Transfers

\$87,174.92

LEA : 117596003 Northern Tioga SD

Printed 12/14/2017 9:14:02 AM

Capital Reserve Fund - § 1431 (32)

2000 Support Services

300 Purchased Professional and Technical Services

310 Official / Administrative Services

Total

1,043.85

Total Purchased Professional and Technical Services

\$1,043.85

Total 2000 Support Services

\$1,043.85

LEA : 117596003 Northern Tioga SD

Printed 12/14/2017 9:14:02 AM

Capital Reserve Fund - § 1431 (32)

2300 Support Services – Administration

Elementary

Secondary

Federal

Total

300 Purchased Professional and Technical Services

310 Official / Administrative Services

1,043.85

Total Purchased Professional and Technical Services

\$1,043.85

Total 2300 Support Services – Administration

\$1,043.85

LEA : 117596003 Northern Tioga SD

Printed 12/14/2017 9:14:02 AM

Capital Reserve Fund - § 1431 (32)

2390 Other Administration Services

Elementary

Secondary

Federal

Total

300 Purchased Professional and Technical Services

310 Official / Administrative Services

1,043.85

Total Purchased Professional and Technical Services

\$1,043.85

Total 2390 Other Administration Services

\$1,043.85

Capital Reserve Fund - § 1431 (32)

4000 Facilities Acquisition, Construction and Improvement Services

Total

300 Purchased Professional and Technical Services

330 Other Professional Services 61,293.39

Total Purchased Professional and Technical Services

\$61,293.39

400 Purchased Property Services

450 Construction Services 1,732,783.42

Total Purchased Property Services

\$1,732,783.42

600 Supplies

610 General Supplies 14,800.00

Total Supplies

\$14,800.00

700 Property

762 Capitalized Equipment - Replacement 141,849.12

Total Property

\$141,849.12

Total 4000 Facilities Acquisition, Construction and Improvement Services

\$1,950,725.93

LEA : 117596003 Northern Tioga SD

Printed 12/14/2017 9:14:06 AM

Capital Reserve Fund - § 1431 (32)

4200 Existing Site Improvement Services

Elementary

Secondary

Federal

Total

400 Purchased Property Services

450 Construction Services

996,382.61

Total Purchased Property Services

\$996,382.61

Total 4200 Existing Site Improvement Services

\$996,382.61

Capital Reserve Fund - § 1431 (32)

4400 Architecture and Engineering Services / Educational Specifications – Improvements

Elementary

Secondary

Federal

Total

300 Purchased Professional and Technical Services

330 Other Professional Services

61,293.39

Total Purchased Professional and Technical Services

\$61,293.39

Total 4400 Architecture and Engineering Services / Educational Specifications – Improvements

\$61,293.39

Capital Reserve Fund - § 1431 (32)

4500 Building Acquisition and Construction Services – Original and Additional

Elementary

Secondary

Federal

Total

400 Purchased Property Services

450 Construction Services

2,021.78

Total Purchased Property Services

\$2,021.78

Total 4500 Building Acquisition and Construction Services – Original and Additional

\$2,021.78

LEA : 117596003 Northern Tioga SD

Printed 12/14/2017 9:14:06 AM

Capital Reserve Fund - § 1431 (32)

	<u>Elementary</u>	<u>Secondary</u>	<u>Federal</u>	<u>Total</u>
4600 Existing Building Improvement Services				
400 <u>Purchased Property Services</u>				
450 Construction Services				734,379.03
Total Purchased Property Services				\$734,379.03
600 <u>Supplies</u>				
610 General Supplies				14,800.00
Total Supplies				\$14,800.00
700 <u>Property</u>				
762 Capitalized Equipment - Replacement				141,849.12
Total Property				\$141,849.12
Total 4600 Existing Building Improvement Services				\$891,028.15

LEA : 117596003 Northern Tioga SD

Printed 12/14/2017 9:14:08 AM

Capital Reserve Fund - § 1431 (32)

5000 Other Expenditures and Financing Uses

Total

900 Other Uses of Funds

910 Redemption of Principal

386,000.00

Total Other Uses of Funds

\$386,000.00

Total 5000 Other Expenditures and Financing Uses

\$386,000.00

LEA : 117596003 Northern Tioga SD

Printed 12/14/2017 9:14:08 AM

Capital Reserve Fund - § 1431 (32)

5100 Debt Service / Other Expenditures and Financing Uses

Elementary

Secondary

Federal

Total

900 Other Uses of Funds

910 Redemption of Principal

386,000.00

Total Other Uses of Funds

\$386,000.00

Total 5100 Debt Service / Other Expenditures and Financing Uses

\$386,000.00

LEA : 117596003 Northern Tioga SD

Printed 12/14/2017 9:14:08 AM

Capital Reserve Fund - § 1431 (32)

5110 Debt Service

Elementary

Secondary

Federal

Total

900 Other Uses of Funds

910 Redemption of Principal

386,000.00

Total Other Uses of Funds

\$386,000.00

Total 5110 Debt Service

\$386,000.00

	<u>General Fund(10)</u>	<u>Public Purpose Trust(27)</u>	<u>Other Compt Approved (28)</u>	<u>Athletic / Activity(29)</u>	<u>Capital Reserve (690. 1850)(31)</u>
1000 Instruction					
1100 Regular Programs - Elementary / Secondary	13,266,070.27				
1200 Special Programs - Elementary / Secondary	4,544,142.42				
1300 Vocational Education	1,270,101.61				
1400 Other Instructional Programs - Elementary / Secondary	128,679.64				
1800 Pre-Kindergarten	349,606.81				
Total Instruction	\$19,558,600.75				
2000 Support Services					
2100 Support Services - Students	883,831.12				
2200 Support Services - Instructional Staff	1,329,346.22				
2300 Support Services - Administration	1,703,521.95				
2400 Support Services - Pupil Health	272,391.97				
2500 Support Services - Business	371,504.45				
2600 Operation and Maintenance of Plant Services	2,312,685.03				
2700 Student Transportation Services	1,916,759.39				
2800 Support Services - Central	71,486.18				
Total Support Services	\$8,861,526.31				
3000 Operation of Non-Instructional Services					
3200 Student Activities	598,303.81				
3300 Community Services	27,307.98				
Total Operation of Non-Instructional Services	\$625,611.79				
4000 Facilities Acquisition, Construction and Improvement Services					
4200 Existing Site Improvement Services	8,367.84				
4400 Architecture and Engineering Services / Educational Specifications - Improvements					
4500 Building Acquisition and Construction Services - Original and Additional					
4600 Existing Building Improvement Services	514,588.50				
Total Facilities Acquisition, Construction and Improvement Services	\$522,956.34				
5000 Other Expenditures and Financing Uses					
5100 Debt Service / Other Expenditures and Financing Uses	2,027,500.00				
5200 Interfund Transfers - Out	1,325,174.92				
Total Other Expenditures and Financing Uses	\$3,352,674.92				
TOTAL ACTUAL EXPENDITURES & OTHER FINANCING USES	\$32,921,370.11				

LEA : 117596003 Northern Tioga SD

Printed 12/14/2017 9:14:10 AM

	<u>Capital Reserve (1431)(32)</u>	<u>Other Capital Projects Fund(39)</u>	<u>Debt Service(40)</u>	<u>Permanent(90)</u>	<u>Total</u>
1000 Instruction					
1100 Regular Programs - Elementary / Secondary					13,266,070.27
1200 Special Programs - Elementary / Secondary					4,544,142.42
1300 Vocational Education					1,270,101.61
1400 Other Instructional Programs - Elementary / Secondary					128,679.64
1800 Pre-Kindergarten					349,606.81
Total Instruction					\$19,558,600.75
2000 Support Services					
2100 Support Services - Students					883,831.12
2200 Support Services - Instructional Staff					1,329,346.22
2300 Support Services - Administration	1,043.85				1,704,565.80
2400 Support Services - Pupil Health					272,391.97
2500 Support Services - Business					371,504.45
2600 Operation and Maintenance of Plant Services					2,312,685.03
2700 Student Transportation Services					1,916,759.39
2800 Support Services - Central					71,486.18
Total Support Services	\$1,043.85				\$8,862,570.16
3000 Operation of Non-Instructional Services					
3200 Student Activities					598,303.81
3300 Community Services					27,307.98
Total Operation of Non-Instructional Services					\$625,611.79
4000 Facilities Acquisition, Construction and Improvement Services					
4200 Existing Site Improvement Services	996,382.61				1,004,750.45
4400 Architecture and Engineering Services / Educational Specifications - Improvements	61,293.39				61,293.39
4500 Building Acquisition and Construction Services - Original and Additional	2,021.78				2,021.78
4600 Existing Building Improvement Services	891,028.15				1,405,616.65
Total Facilities Acquisition, Construction and Improvement Services	\$1,950,725.93				\$2,473,682.27
5000 Other Expenditures and Financing Uses					
5100 Debt Service / Other Expenditures and Financing Uses	386,000.00				2,413,500.00
5200 Interfund Transfers - Out					1,325,174.92
Total Other Expenditures and Financing Uses	\$386,000.00				\$3,738,674.92
TOTAL ACTUAL EXPENDITURES & OTHER FINANCING USES	\$2,337,769.78				\$35,259,139.89

LEA : 117596003 Northern Tioga SD

Printed 12/14/2017 9:14:13 AM

PSERS Salary Data (Salary Data should relate to the General Fund only)

Amount Description	Amount
Total Salary Base for salaries subject to PSERS withholding	14,110,775.15
Total Federally Funded salaries subject to PSERS withholding	621,488.99
	<hr/>

Title I Expenditure Data

Amount Description	Amount
Expenditures Funded with Current Title I Funds	408,835.51
Expenditures Funded with Carry over Title I Funds	114,143.59
	<hr/>
Total Title I Expenditure Data	\$522,979.10
	<hr/>

Title I ARRA Amount

Amount Description	Amount
Portion of Total Title I Expenditures funded with ARRA Title I	<hr/>

Benefits for Staff Relative to Collective Bargaining Agreements

	OBJECT	COVERED	NOT COVERED	TOTAL
10 General Fund	No Self Insurance data to report			
	211 Medical Insurance	3,340,702.64	241,342.80	3,582,045.44
	212 Dental Insurance	163,984.04	11,846.72	175,830.76
	215 Eye Care Insurance			
	216 Prescription Insurance			
	271 Self-Insurance Medical Benefits			
	272 Self-Insurance Dental Benefits			
	275 Self-Insurance Eye Care Benefits			
	276 Self-Insurance Prescription Benefits			
	FUND TOTAL	\$3,504,686.68	\$253,189.52	\$3,757,876.20
50 Enterprise Fund	No Self Insurance data to report			
	211 Medical Insurance	114,538.72	73,469.92	188,008.64
	212 Dental Insurance	1,891.59	1,213.35	3,104.94
	215 Eye Care Insurance			
	216 Prescription Insurance			
	271 Self-Insurance Medical Benefits			
	272 Self-Insurance Dental Benefits			
	275 Self-Insurance Eye Care Benefits			
	276 Self-Insurance Prescription Benefits			
	FUND TOTAL	\$116,430.31	\$74,683.27	\$191,113.58
60 Internal Service Fund	No Self Insurance data to report			
	211 Medical Insurance			
	212 Dental Insurance			
	215 Eye Care Insurance			
	216 Prescription Insurance			
	271 Self-Insurance Medical Benefits			
	272 Self-Insurance Dental Benefits			
	275 Self-Insurance Eye Care Benefits			
	276 Self-Insurance Prescription Benefits			
	FUND TOTAL			
Total of All Funds		\$3,621,116.99	\$327,872.79	\$3,948,989.78

LEA : 117596003 Northern Tioga SD

Printed 12/14/2017 9:14:15 AM

Function	Special Education (Prior Year)	Nonspecial Education (Prior Year)	Total (Prior Year)	Special Education (Current Year)	Nonspecial Education (Current Year)	Total (Current Year)
2120 Guidance Services	75,171.10	418,844.70	494,015.80	82,032.33	403,992.08	486,024.41
2140 Psychological Services	183,954.70	14,915.25	198,869.95	110,863.88	8,988.96	119,852.84
2150 Speech Pathology and Audiology Services						
2160 Social Work Services	227,498.71	30,090.53	257,589.24	257,107.33	20,846.54	277,953.87
2260 Instruction and Curriculum Development Services	243,744.52	164,801.48	408,546.00	258,344.98	218,288.15	476,633.13
2350 Legal and Accounting Services	17,803.34	36,449.79	54,253.13	3,594.83	17,703.77	21,298.60
2420 Medical Services						
2440 Nursing Services	49,130.93	273,751.88	322,882.81	45,974.95	226,417.02	272,391.97
2700 Student Transportation Services	365,818.12	1,558,268.45	1,924,086.57	312,595.30	1,604,164.09	1,916,759.39
Total	\$1,163,121.42	\$2,497,122.08	\$3,660,243.50	\$1,070,513.60	\$2,500,400.61	\$3,570,914.21

LEA : 117596003 Northern Tioga SD

Printed 12/14/2017 9:14:15 AM

(PRINCIPAL AMOUNTS ONLY)

GOVERNMENTAL FUNDS/ ACTIVITIES

	Short-Term Borrowing	General Obligation Bonds/Notes	Authority Building Obligations	Other Long-Term Debt	Other Post-Employment Benefits (OPEB)	Compensated Absences	Net Pension Liability	Total
1. Debt at Beginning of Fiscal Year		7,925,000.00			318,926.00	219,809.52	47,127,000.00	55,590,735.52
2. Additional Debt Incurred During Year					98,681.00	27,751.13	7,088,000.00	7,214,432.13
3. Retirements and Repayments		2,255,000.00						2,255,000.00
4. Debt at End of Fiscal Year		5,670,000.00			417,607.00	247,560.65	54,215,000.00	60,550,167.65
5. Accreted Interest at End Of Fiscal Year								
6. Total Debt and Accreted Interest		5,670,000.00			417,607.00	247,560.65	54,215,000.00	60,550,167.65
7. Current Portion P&I - Due within 1 year		1,913,400.00						1,913,400.00
8. Interest Paid during current fiscal year		158,500.00						158,500.00

(PRINCIPAL AMOUNTS ONLY)

PROPRIETARY FUNDS

- 1. Debt at Beginning of Fiscal Year
- 2. Additional Debt Incurred During Year
- 3. Retirements and Repayments
- 4. Debt at End of Fiscal Year
- 5. Accreted Interest at End Of Fiscal Year
- 6. Total Debt and Accreted Interest
- 7. Current Portion P&I - Due within 1 year
- 8. Interest Paid during current fiscal year

Total Principal and Interest Payments Made by Your School - All Funds

Function	Fund		Principal (910)	Principal (920)	Interest (830)	Total (Principal +Interest)	Misc Other Uses (990)
5110	10	General Fund	1,869,000.00		158,500.00	2,027,500.00	
5110	20	Special Revenue Funds					
5110	30	Capital Projects Funds	386,000.00			386,000.00	
5110	40	Debt Service Fund					
5110	90	Permanent Fund					
5120	10	General Fund					
5120	20	Special Revenue Funds					
5120	30	Capital Projects Funds					
5120	40	Debt Service Fund					

Total Debt Payments - Governmental Funds			\$2,255,000.00		\$158,500.00	\$2,413,500.00	
---	--	--	-----------------------	--	---------------------	-----------------------	--

Function	Fund		Principal (910)	Principal (920)	Interest (830)	Total (Principal +Interest)
5110	50	Enterprise Fund				
5110	60	Internal Service Fund				
5120	50	Enterprise Fund				
5120	60	Internal Service Fund				

Total Debt Payments - Proprietary Funds						
--	--	--	--	--	--	--

Debt Details
Governmental Funds/ Activities

Debt Category	Debt Issue Date (MM/YYYY)	Principal Amounts Only			Debt at End of Fiscal Year	Current Portion Due Within One Year (Principal and Interest)	Interest Paid During Fiscal Year
		Debt at Beginning of Fiscal Year	Additions	Reductions / Repayments			
General Obligation Bonds/Notes – CIB	01/2016	5,205,000.00		80,000.00	5,125,000.00	1,357,500.00	104,100.00
General Obligation Bonds/Notes – CIB	06/2013	2,720,000.00		2,175,000.00	545,000.00	555,900.00	54,400.00
Compensated Absences		219,809.52	27,751.13		247,560.65		
Other Post-Employment Benefits (OPEB)		318,926.00	98,681.00		417,607.00		
Net Pension Liability		47,127,000.00	7,088,000.00		54,215,000.00		
Totals for Debt Entered:		\$55,590,735.52	\$7,214,432.13	\$2,255,000.00	\$60,550,167.65	\$1,913,400.00	\$158,500.00

General Fund (10)

Section 1: Tuition/Purchased Services as Reported within Expenditure Detail

	Amount
Tuition Reported in General Fund Expenditures 1000-560	648,822.22
Purchased Services in General Fund Expenditures 1000-594 and 1000-597	

Section 1 Total	\$648,822.22
------------------------	---------------------

Section 2: Tuition Paid to Institution Types During Fiscal Year

	Tuition Paid For Nonspecial Education	Tuition Paid For Special Education	Total
1 1306 Institutions			
2 Institutionalized Children's Programs			
3 Juveniles Incarcerated in Adult Facilities	10,404.73		10,404.73
4 Residential Treatment Facilities		5,369.91	5,369.91
5 Other Local Education Agencies	15,717.79	95,011.02	110,728.81
6 Brick and Mortar Charter Schools			
7 Cyber Charter Schools	280,015.14	143,024.13	423,039.27
8 Career and Technology Centers			
9 Approved Private Schools		12,427.97	12,427.97
10 PA Chartered Schools for the Deaf and Blind			
11 Private Residential Rehabilitative Institutions		7,311.75	7,311.75
12 Juvenile Detention Centers			
13 Special Program Jointures			
14 Other Tuition Not Included Elsewhere In This Section	26,563.78	52,976.00	79,539.78
Section 2 Total	\$332,701.44	\$316,120.78	\$648,822.22

LEA : 117596003 Northern Tioga SD

Printed 12/14/2017 9:14:17 AM

Food Service / Cafeteria Operations Fund (51)

3000 Operation of Non-Instructional Services

Total

100 Personnel Services – Salaries

100 Personnel Services – Salaries 485,139.09

Total Personnel Services – Salaries \$485,139.09

200 Personnel Services – Employee Benefits

210 Group Insurance – Contracted Provider 192,290.38

220 Social Security Contributions 36,580.95

230 PSERS Retirement Contributions 140,184.81

250 Unemployment Compensation 2,778.36

260 Workers' Compensation 2,668.01

Total Personnel Services – Employee Benefits \$374,502.51

300 Purchased Professional and Technical Services

340 Technical Services 2,704.80

Total Purchased Professional and Technical Services \$2,704.80

400 Purchased Property Services

430 Repairs and Maintenance Services 17,441.13

Total Purchased Property Services \$17,441.13

500 Other Purchased Services

580 Travel 6,979.41

Total Other Purchased Services \$6,979.41

600 Supplies

610 General Supplies 29,114.50

630 Food 634,226.26

Total Supplies \$663,340.76

700 Property

740 Depreciation 12,381.37

Total Property \$12,381.37

Total 3000 Operation of Non-Instructional Services \$1,562,489.07

Food Service / Cafeteria Operations Fund (51)

3100 Food Services

100 Personnel Services – Salaries

	<u>Elementary</u>	<u>Secondary</u>	<u>Federal</u>	<u>Total</u>
100 Personnel Services – Salaries			8,440.48	485,139.09

Total Personnel Services – Salaries

\$8,440.48	\$485,139.09
-------------------	---------------------

200 Personnel Services – Employee Benefits

210 Group Insurance – Contracted Provider				192,290.38
---	--	--	--	------------

220 Social Security Contributions			641.25	36,580.95
-----------------------------------	--	--	--------	-----------

230 PSERS Retirement Contributions			2,482.24	140,184.81
------------------------------------	--	--	----------	------------

250 Unemployment Compensation			47.39	2,778.36
-------------------------------	--	--	-------	----------

260 Workers' Compensation			31.54	2,668.01
---------------------------	--	--	-------	----------

Total Personnel Services – Employee Benefits

\$3,202.42	\$374,502.51
-------------------	---------------------

300 Purchased Professional and Technical Services

340 Technical Services				2,704.80
------------------------	--	--	--	----------

Total Purchased Professional and Technical Services

\$2,704.80

400 Purchased Property Services

430 Repairs and Maintenance Services				17,441.13
--------------------------------------	--	--	--	-----------

Total Purchased Property Services

\$17,441.13

500 Other Purchased Services

580 Travel			536.03	6,979.41
------------	--	--	--------	----------

Total Other Purchased Services

\$536.03	\$6,979.41
-----------------	-------------------

600 Supplies

610 General Supplies			510.22	29,114.50
----------------------	--	--	--------	-----------

630 Food			12,244.76	634,226.26
----------	--	--	-----------	------------

Total Supplies

\$12,754.98	\$663,340.76
--------------------	---------------------

700 Property

740 Depreciation				12,381.37
------------------	--	--	--	-----------

Total Property

\$12,381.37

Total 3100 Food Services

\$24,933.91	\$1,562,489.07
--------------------	-----------------------

	<u>Food Service(51)</u>	<u>Child Care Operations(52)</u>	<u>Other Enterprise(58)</u>	<u>Internal Service(60)</u>	<u>Total</u>
3000 <u>Operation of Non-Instructional Services</u>					
3100 Food Services	1,562,489.07				1,562,489.07
Total Operation of Non-Instructional Services	\$1,562,489.07				\$1,562,489.07
TOTAL ACTUAL EXPENDITURES & OTHER FINANCING USES	\$1,562,489.07				\$1,562,489.07