

**Annual Financial Report
Accuracy Certification Statement**

For Fiscal Year Ending

6/30/2016

Pennsylvania Department of Education

&

Office of Comptroller Operations

PDE-2056: Intermediate Unit

PDE-2057: School District, AVTS/CTC, Charter School,
and Special Program Jointure

CERTIFICATION: By signing this page I agree that the electronic data submitted is a complete and accurate statement of the financial operations and status of the local education agency for the fiscal year. It has been prepared in accordance with generally accepted accounting principles and established Commonwealth of PA reporting guidelines.

Chief School Administrator Signature

Date

Board Secretary Signature

Date

Wanda Erb

Contact Person

wanda.erb@ntiogasd.org

Contact Person E-mail Address

(814)258-5644 Ext :1020

Contact Person Telephone Number

Contact Person Fax Number

Audit Certification
Annual Financial Report:
For Fiscal Year Ending **6/30/2016**
(Pursuant to PA School Code Section 218(b))

LEA Name : Northern Tioga SD
AUN Number : 117596003
County : Tioga

Audit Certification Due: 12/31/2016

This certification is applicable to:

- Orig. Annual Financial Report submitted to
Comptroller Operations:** _____
Date

- Annual Financial Report revisions submitted on:** _____
Date

Auditing Firm:

Auditor Contact Name:

Auditor Phone:

Auditor E-mail:

CERTIFICATION: By signing this page I agree that the financial statements of the school have been properly audited as noted above pursuant to Article XXIV, and in the auditor's professional opinion, the Annual Financial Report (PDE-2057) submitted on the date referenced is materially consistent with the audited financial statements.

Chief School Administrator

Board Secretary

Signature

Date

Signature

Date

Wanda Erb

Contact Person

wanda.erb@ntiogasd.org

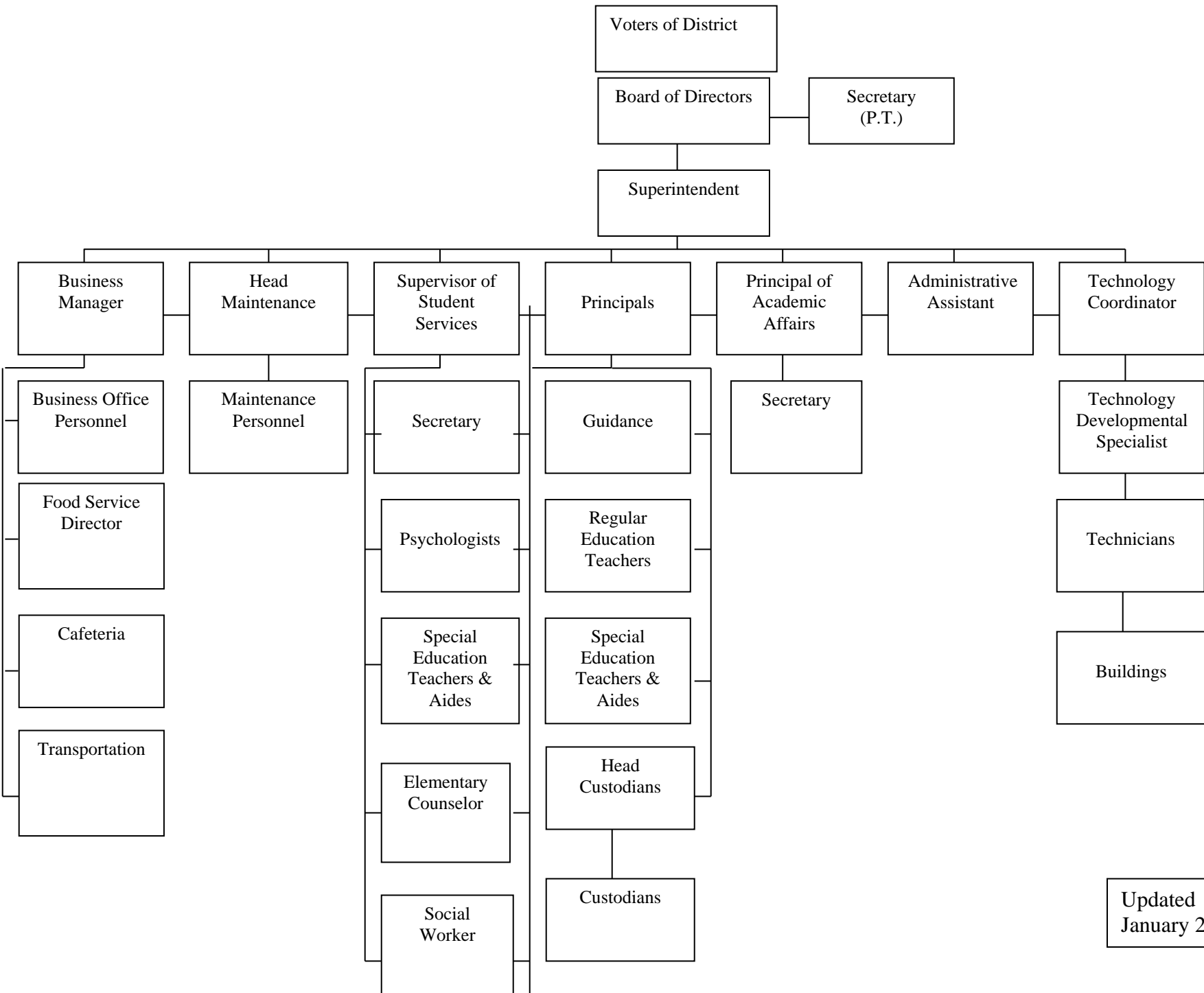
Contact Person E-mail Address

(814)258-5644 Ext :1020

Contact Person Telephone Number

Contact Person Fax Number

NORTHERN TIOGA SCHOOL DISTRICT



Updated
January 2014

<u>Val Number</u>	<u>Description</u>	<u>Justification</u>
30501	Revenue Detail: AFR amount must equal or exceed PDE FAI System amount. 7311, AFR Rev Detail: 1402817.89 7311, PDE FAI System: \$1,420,459.03	The PDE FAI System includes the payment of \$17,641.14 that was due in 2014/15 but paid in 2015/16.
41150	Expenditure Detail - There is an entry in function 5150- 990 object "Other". Please explain what constitutes "Other". Expenditure 5150-990, Fund 40: \$52,900.00	This is the bond discount that was recognized in the GOB 2016 issuance.
50440	SESS - 2260 Instruction and Curriculum Development Services: SESS Schedule amounts for Special Education vary from prior year by 40% or more. Correct the data or enter a justification. SESS Schedule 2260: \$243,744.52 Prior Year SESS Schedule 2260: \$29,331.30	In prior year the Special Education Director & Secretary were coded to the 1290 account code.
50450	SESS - 2350 Legal and Accounting Services: SESS Schedule amounts for Special Education vary from prior year by 40% or more. Correct the data or enter a justification. SESS Schedule 2350: \$17,803.34 Prior Year SESS Schedule 2350: \$5,709.88	The district experienced a couple of special education legal situations during the year and engage a law firm specifically to assist with the special education situations.

Amounts Expressed in Whole Dollars	<u>General Fund</u> <u>(10)</u>	<u>Public Purpose Trust</u> <u>(27)</u>	<u>Other Compt Approved</u> <u>(28)</u>	<u>Athletic / Activity</u> <u>(29)</u>	<u>Capital Reserve (690.</u> <u>1850)</u> <u>(31)</u>
Assets And Deferred Outflows Of Resources					
Assets					
0100 Cash and Cash Equivalents	9,055,497				
0110 Investments	1,483,575				
0120 Taxes Receivable	1,056,586				
0130 Due From Other Funds	117,602				
0141 Due From Other Governments					
0142 State Revenue Receivable	1,044,784				
0143 Federal Revenue Receivable	677,583				
0145 Other Intergovernmental Revenue Receivable					
0146 Due from Primary Government					
0147 Due from Component Unit					
0150 Other Receivables	116,189				
0170 Inventories					
0180 Prepaid Expenses (Expenditures)					
0190 Other Current Assets					
Total Assets	\$13,551,816				
0910 Deferred Outflows of Resources					
Total Assets And Deferred Outflows Of Resources	\$13,551,816				

Amounts Expressed in Whole Dollars

	<u>Capital Reserve (1431)</u> <u>(32)</u>	<u>Other Capital Projects</u> <u>Fund</u> <u>(39)</u>	<u>Debt Service</u> <u>(40)</u>	<u>Permanent</u> <u>(90)</u>	<u>Total Governmental</u> <u>Funds</u>
Assets And Deferred Outflows Of Resources					
Assets					
0100 Cash and Cash Equivalents	659,924				9,715,421
0110 Investments	5,206,267				6,689,842
0120 Taxes Receivable					1,056,586
0130 Due From Other Funds	1,333,170				1,450,772
0141 Due From Other Governments					
0142 State Revenue Receivable					1,044,784
0143 Federal Revenue Receivable					677,583
0145 Other Intergovernmental Revenue Receivable					
0146 Due from Primary Government					
0147 Due from Component Unit					
0150 Other Receivables					116,189
0170 Inventories					
0180 Prepaid Expenses (Expenditures)					
0190 Other Current Assets					
Total Assets	\$7,199,361				\$20,751,177
0910 Deferred Outflows of Resources					
Total Assets And Deferred Outflows Of Resources	\$7,199,361				\$20,751,177

Amounts Expressed in Whole Dollars

<u>General Fund</u>	<u>Public Purpose Trust</u>	<u>Other Compt Approved</u>	<u>Athletic / Activity</u>	<u>Capital Reserve (690.</u>
<u>(10)</u>	<u>(27)</u>	<u>(28)</u>	<u>(29)</u>	<u>1850)</u>
				<u>(31)</u>

Liabilities And Deferred Inflows Of Resources And Fund Balances

Liabilities

0400 Due to Other Funds	1,333,170
0411 Due to Other Governments	
0412 Due to Primary Government	
0413 Due to Component Unit	
0420 Accounts Payable	151,047
0430 Contracts Payable	
0440 Current Portion of Long-Term Debt	212,316
0450 Short-Term Payables	
0461 Accrued Salaries and Benefits	2,402,296
0462 Payroll Deductions and Withholding	1,281,651
0480 Unearned Revenues	
0490 Other Current Liabilities	

Total Liabilities	\$5,380,480
--------------------------	--------------------

0950 Deferred Inflows of Resources	978,287
------------------------------------	---------

Fund Balances

0810 Nonspendable Fund Balance	
0820 Restricted Fund Balance	
0830 Committed Fund Balance	
0840 Assigned Fund Balance	5,488,525
0850 Unassigned Fund Balance	1,704,524

Total Fund Balances	\$7,193,049
----------------------------	--------------------

Total Liabilities, Deferred Inflows Of Resources And Fund Balances	\$13,551,816
---	---------------------

Amounts Expressed in Whole Dollars

	<u>Capital Reserve (1431)</u> <u>(32)</u>	<u>Other Capital Projects</u> <u>Fund</u> <u>(39)</u>	<u>Debt Service</u> <u>(40)</u>	<u>Permanent</u> <u>(90)</u>	<u>Total Governmental</u> <u>Funds</u>
Liabilities And Deferred Inflows Of Resources And Fund Balances					
Liabilities					
0400 Due to Other Funds					1,333,170
0411 Due to Other Governments					
0412 Due to Primary Government					
0413 Due to Component Unit					
0420 Accounts Payable					151,047
0430 Contracts Payable					
0440 Current Portion of Long-Term Debt					212,316
0450 Short-Term Payables					
0461 Accrued Salaries and Benefits					2,402,296
0462 Payroll Deductions and Withholding					1,281,651
0480 Unearned Revenues					
0490 Other Current Liabilities					
Total Liabilities					\$5,380,480
0950 Deferred Inflows of Resources					978,287
Fund Balances					
0810 Nonspendable Fund Balance					
0820 Restricted Fund Balance					
0830 Committed Fund Balance		7,199,361			7,199,361
0840 Assigned Fund Balance					5,488,525
0850 Unassigned Fund Balance					1,704,524
Total Fund Balances		\$7,199,361			\$14,392,410
Total Liabilities, Deferred Inflows Of Resources And Fund Balances		\$7,199,361			\$20,751,177

Amounts Expressed in Whole Dollars	<u>General Fund</u> <u>(10)</u>	<u>Public Purpose Trust</u> <u>(27)</u>	<u>Other Compt Approved</u> <u>(28)</u>	<u>Athletic / Activity</u> <u>(29)</u>	<u>Capital Reserve (690.</u> <u>1850)</u> <u>(31)</u>
Revenues					
6000 Revenue from Local Sources	11,364,773				
7000 Revenue from State Sources	19,237,550				
8000 Revenue from Federal Sources	947,310				
Total Revenues	\$31,549,633				
Expenditures					
1000 Instruction	19,091,061				
2000 Support Services	9,089,478				
3000 Operation of Non-Instructional Services	616,385				
4000 Facilities Acquisition, Construction and Improvement Services	127,739				
5110 Debt Service	2,425,549				
5130 Refund of Prior Year Revenues / Receipts	6				
5140 Short-Term Borrowing – Interest and Costs					
Total Expenditures	\$31,350,218				
Excess (Deficiency) Of Revenues Over Expenditures	\$199,415				
Other Financing Sources (Uses)					
9110 Face Value of Bonds Issued					
9120 Proceeds from Refunding of Bonds					
9130 Bond Premiums					
9200 Proceeds from Extended-Term Financing					
9300 Interfund Transfers - IN					
9400 Sale of or Compensation for Loss of Fixed Assets					
9710 Transfers from Component Units					
9720 Transfers from Primary Governments					
9910 Other Financing Sources Not Listed in the 9000 Series					
9990 Insurance Recoveries	20,833				
5120 Debt Service – Refunded Bonds					
5150 Bond Discounts					
5200 Interfund Transfers – Out	1,209,410				
5300 Transfers Out to Component Units/Primary Governments					
Total Other Financing Sources (Uses)	(\$1,188,577)				

Amounts Expressed in Whole Dollars	<u>Capital Reserve (1431)</u> <u>(32)</u>	<u>Other Capital Projects</u> <u>Fund</u> <u>(39)</u>	<u>Debt Service</u> <u>(40)</u>	<u>Permanent</u> <u>(90)</u>	<u>Total Governmental</u> <u>Funds</u>
Revenues					
6000 Revenue from Local Sources	72,909				11,437,682
7000 Revenue from State Sources					19,237,550
8000 Revenue from Federal Sources					947,310
Total Revenues	\$72,909				\$31,622,542
Expenditures					
1000 Instruction					19,091,061
2000 Support Services	1,035		61,603		9,152,116
3000 Operation of Non-Instructional Services					616,385
4000 Facilities Acquisition, Construction and Improvement Services	911,219				1,038,958
5110 Debt Service			2,471		2,428,020
5130 Refund of Prior Year Revenues / Receipts					6
5140 Short-Term Borrowing – Interest and Costs					
Total Expenditures	\$912,254		\$64,074		\$32,326,546
Excess (Deficiency) Of Revenues Over Expenditures	(\$839,345)		(\$64,074)		(\$704,004)
Other Financing Sources (Uses)					
9110 Face Value of Bonds Issued					
9120 Proceeds from Refunding of Bonds			5,290,000		5,290,000
9130 Bond Premiums			82,520		82,520
9200 Proceeds from Extended-Term Financing					
9300 Interfund Transfers - IN	1,209,188				1,209,188
9400 Sale of or Compensation for Loss of Fixed Assets					
9710 Transfers from Component Units					
9720 Transfers from Primary Governments					
9910 Other Financing Sources Not Listed in the 9000 Series					
9990 Insurance Recoveries					20,833
5120 Debt Service – Refunded Bonds			5,255,546		5,255,546
5150 Bond Discounts			52,900		52,900
5200 Interfund Transfers – Out					1,209,410
5300 Transfers Out to Component Units/Primary Governments					
Total Other Financing Sources (Uses)	\$1,209,188		\$64,074		\$84,685

Amounts Expressed in Whole Dollars	<u>General Fund</u> <u>(10)</u>	<u>Public Purpose Trust</u> <u>(27)</u>	<u>Other Compt Approved</u> <u>(28)</u>	<u>Athletic / Activity</u> <u>(29)</u>	<u>Capital Reserve</u> <u>(690.</u> <u>1850)</u> <u>(31)</u>
Special And Extraordinary Items					
9920 Special Items – Gains					
9930 Extraordinary Items – Gains					
5520 Special Items – Losses					
5530 Extraordinary Items – Losses					
Net Change In Fund Balances	(\$989,162)				
Fund Balance					
0001 Fund Balance - Beginning of Fiscal Year	8,182,211				
Fund Balance - End Of Year	\$7,193,049				

Amounts Expressed in Whole Dollars	<u>Capital Reserve (1431)</u> <u>(32)</u>	<u>Other Capital Projects</u> <u>Fund</u> <u>(39)</u>	<u>Debt Service</u> <u>(40)</u>	<u>Permanent</u> <u>(90)</u>	<u>Total Governmental</u> <u>Funds</u>
Special And Extraordinary Items					
9920 Special Items – Gains					
9930 Extraordinary Items – Gains					
5520 Special Items – Losses					
5530 Extraordinary Items – Losses					
Net Change In Fund Balances	\$369,843				(\$619,319)
Fund Balance					
0001 Fund Balance - Beginning of Fiscal Year	6,829,518				15,011,729
Fund Balance - End Of Year	\$7,199,361				\$14,392,410

Amounts Expressed in Whole Dollars	<u>Food Service</u> <u>(51)</u>	<u>Child Care</u> <u>Operations</u> <u>(52)</u>	<u>Other Enterprise</u> <u>(58)</u>	<u>TOTAL</u>	<u>Internal Service</u> <u>(60)</u>
Assets And Deferred Outflows Of Resources					
Current Assets					
0100 Cash and Cash Equivalents	164,353			164,353	
0110 Investments					
0130 Due From Other Funds					
0141 Due From Other Governments					
0142 State Revenue Receivable	5,232			5,232	
0143 Federal Revenue Receivable	87,654			87,654	
0146 Due from Primary Government					
0147 Due from Component Unit					
0150 Other Receivables					
0170 Inventories	33,949			33,949	
0180 Prepaid Expenses (Expenditures)					
0190 Other Current Assets					
Total Current Assets	\$291,188			\$291,188	
Noncurrent Assets					
0211 Land					
0212 Site Improvements (Net)					
0220 Buildings and Building Improvements (Net)					
0230 Machinery, Equipment and Furniture (Net)	131,127			131,127	
0250 Construction in Progress					
0260 Long Term Prepayments					
0290 Other Noncurrent Assets					
Total Noncurrent Assets	\$131,127			\$131,127	
0910 Deferred Outflows of Resources					
Total Assets And Deferred Outflows Of Resources	\$422,315			\$422,315	

LEA : 117596003 Northern Tioga SD

Printed 10/27/2016 4:24:16 PM

Page - 2 of 2

Amounts Expressed in Whole Dollars	<u>Food Service</u> <u>(51)</u>	<u>Child Care</u> <u>Operations</u> <u>(52)</u>	<u>Other Enterprise</u> <u>(58)</u>	<u>TOTAL</u>	<u>Internal Service</u> <u>(60)</u>
Liabilities And Deferred Inflows Of Resources And Net Position					
Current Liabilities					
0400 Due to Other Funds	117,602			117,602	
0411 Due to Other Governments					
0413 Due to Component Unit					
0420 Accounts Payable					
0430 Contracts Payable					
0440 Current Portion of Long-Term Debt					
0450 Short-Term Payables					
0461 Accrued Salaries and Benefits	7,903			7,903	
0462 Payroll Deductions and Withholding					
0480 Unearned Revenues	12,850			12,850	
0490 Other Current Liabilities					
Total Current Liabilities	\$138,355			\$138,355	
Noncurrent Liabilities					
0510 Bonds Payable					
0520 Extended-Term Financing Agreements Payable					
0530 Lease-Purchase Obligations					
0540 Accumulated Compensated Absences					
0550 Authority Lease Obligations					
0560 Other Post-Employment Benefits (OPEB)					
0570 Net Pension Liability					
0599 Other Long-Term Liabilities					
Total Noncurrent Liabilities					
Total Liabilities	\$138,355			\$138,355	
0950 Deferred Inflows of Resources					
Net Position					
0791 Invested in Capital Assets, Net of Related Debt	131,127			131,127	
0008 Restricted Net Position (0792 – 0798)					
0799 Unrestricted Net Position	152,833			152,833	
Total Net Position	\$283,960			\$283,960	
Total Liabilities And Deferred Inflows Of Resources And Net Position	\$422,315			\$422,315	

Amounts Expressed in Whole Dollars	<u>Food Service</u> <u>(51)</u>	<u>Child Care Operations</u> <u>(52)</u>	<u>Other Enterprise</u> <u>(58)</u>	<u>TOTAL</u>	<u>Internal Service</u> <u>(60)</u>
Operating Revenues					
6600 Food Service Revenue	403,115			403,115	
0071 Charges for Services					
0072 Other Operating Revenue					
Total Operating Revenues	\$403,115			\$403,115	
Operating Expenses					
100 Personnel Services – Salaries	452,669			452,669	
200 Personnel Services – Employee Benefits	362,574			362,574	
300 Purchased Professional and Technical Services	2,716			2,716	
400 Purchased Property Services	18,725			18,725	
500 Other Purchased Services	5,229			5,229	
600 Supplies	586,184			586,184	
740 Depreciation	10,345			10,345	
810 Dues and Fees					
890 Miscellaneous Expenditures					
Total Operating Expenses	\$1,438,442			\$1,438,442	
Operating Income (Loss)	(\$1,035,327)			(\$1,035,327)	
Non Operating Revenues (Expenses)					
6500 Earnings on Investments	338			338	
6920 Contributions and Donations from Private Sources					
6930 Gains or Losses on Sale of Fixed Assets					
6991 Refunds of a Prior Year Expenditure					
7000 Revenue from State Sources	150,692			150,692	
8000 Revenue from Federal Sources	883,663			883,663	
820 Claims and Judgments Against the LEA					
830 Interest					
TOTAL Non Operating Revenues (Expenses)	\$1,034,693			\$1,034,693	
Income (Loss) Before Contributions And Transfers	(\$634)			(\$634)	

Amounts Expressed in Whole Dollars	<u>Food Service</u> <u>(51)</u>	<u>Child Care Operations</u> <u>(52)</u>	<u>Other Enterprise</u> <u>(58)</u>	<u>TOTAL</u>	<u>Internal Service</u> <u>(60)</u>
Contributions, Transfers, and Special and Extraordinary Items					
5200 Interfund Transfers – Out					
5300 Transfers Out to Component Units/Primary Governments					
5520 Special Items – Losses					
5530 Extraordinary Items – Losses					
9300 Interfund Transfers - IN	222			222	
9500 Capital Contributions					
9700 Transfers IN From Component Units/Primary Governments					
9920 Special Items – Gains					
9930 Extraordinary Items – Gains					
Change In Net Position	(\$412)			(\$412)	
0002 Net Position - Beginning of Fiscal Year	284,372			284,372	
0003 Accounting Changes / Residual Equity Transfers					
Net Position - End Of Year	\$283,960			\$283,960	

LEA : 117596003 Northern Tioga SD

Printed 10/27/2016 4:24:22 PM

Amounts Expressed in Whole Dollars	<u>Food Service</u> <u>(51)</u>	<u>Child Care Operations</u> <u>(52)</u>	<u>Other Enterprise</u> <u>(58)</u>	<u>TOTAL</u>	<u>Internal Service(60)</u>
Cash Flows From Operating Activities					
0011 Cash Receipts From Users	408,771			408,771	
0012 Cash Receipts From Assessments Made to Other Funds					
0013 Cash Receipts From Earnings on Investments					
0014 Cash Receipts From Other Operating Revenue					
0015 Cash Payments To Employees For Services	946,557			946,557	
0016 Cash Payments For Insurance Claims					
0017 Cash Payments To Suppliers For Goods and Services	509,269			509,269	
0018 Cash Payments For Other Operating Expenses					
Net Cash Provided By (Used For) Operating Activities	(\$1,047,055)			(\$1,047,055)	
Cash Flows From Non-Capital Financing Activities					
0021 Receipts From Local Sources - 6000					
0022 Receipts From State Sources - 7000	151,551			151,551	
0023 Receipts From Federal Sources -8000	784,181			784,181	
0024 Notes and Loans Received (Repaid)					
0025 Interest Paid on Notes/Loans - 5100-830					
0026 Operating Transfers In (Out)/Residual Equity Trans	222			222	
0027 Operating Transfers In (Out) Primary Government / Comp Unit					
0028 Receipts From Refund of Prior Year Expenditures - 6991					
0029 Special and Extraordinary Gains (losses)					
Net Cash Prov By (Used for) Non-Capital Financing Activities	\$935,954			\$935,954	
Cash Flows From Capital and Related Financing Activities					
0031 Payments For Fac Acq, Const, and Imp - 4000					
0032 Gain / (Loss) on Sale of Fixed Assets - 6930					
0033 Proceeds From Extended Term Financing - 9200					
0034 Principal Paid on Financing Agreements					
0035 Interest Paid on Financing Agreements - 5100-830					
0036 (Inc) Dec in Contributed Capital					
Net Cash Prov By (Used for) Capital and Related Financing Activities					
Cash Flows From Investing Activities					
0041 Earnings on Investments - 6500	338			338	
0042 Purchase of Inv Securities / Deposits to Inv Pools					
0043 Receipts From Investment Pool Withdrawals					
0044 Proceeds from Sale and Maturity of Inv Securities					
0045 Loans Received (Paid)					
Net Cash Prov By (Used for) Investing Activities	\$338			\$338	

	<u>Food Service</u> <u>(51)</u>	<u>Child Care Operations</u> <u>(52)</u>	<u>Other Enterprise</u> <u>(58)</u>	<u>TOTAL</u>	<u>Internal Service</u> <u>(60)</u>
Net Increase (Decrease) in Cash Flows	(110,763)			(110,763)	
0004 Cash and Cash Equivalents Beginning of Year	275,116			275,116	
Cash and Cash Equivalents at Year End	\$164,353			\$164,353	

Reconciliation of Operating Income (Loss) To Net Cash Provided by (Used For) Operating Activities

0005 Operating Income (Loss) per REP	(1,035,327)			(1,035,327)	
Adjustments					
0051 Depreciation and Net Amortization	10,167			10,167	
0052 Provision for Uncollectible Accounts					
0053 Other Adjustments	102,688			102,688	
Effect of Changes in Assets, Liabilities, Deferred Outflows and Deferred Inflows					
0054 (Inc) Dec In Accounts Receivable (0120-0150)	3,186			3,186	
0055 Advances to Other Funds (0160)					
0056 (Inc) Dec in Inventories (0170)	1,075			1,075	
0057 (Inc) Dec in Prepaid Expenses (0180)					
0058 (Inc) Dec in Other Current or Noncurrent Assets					
0064 Deferred Outflows (0910)					
0059 Inc (Dec) in Accounts Payable (0400-0450)					
0060 Inc (Dec) in Accrued Salaries/Benefits (0461)	(3,077)			(3,077)	
0065 Inc (Dec) in Net Pension Liabilities (0570)					
0066 Inc (Dec) in Other Postemp Benefit Oblig (0560)					
0061 Inc (Dec) in Payroll Deductions/Withholding (0462)					
0062 Inc (Dec) in Unearned Revenue (0480)	2,470			2,470	
0063 Inc (Dec) in Other Current or Noncurrent Liabilities	(128,237)			(128,237)	
0067 Deferred Inflows (0950)					
Total Adjustments	(\$11,728)			(\$11,728)	
Cash Provided By (Used for) Total	(\$1,047,055)			(\$1,047,055)	

COMBINED STATEMENT OF CASH FLOWS
SCHEDULE OF NONCASH INVESTING, CAPITAL, AND FINANCING ACTIVITIES

Explanation of Transaction and Balance Sheet Effect	Amount
Total	

LEA : 117596003 Northern Tioga SD

Printed 10/27/2016 4:24:23 PM

Amounts Expressed in Whole Dollars

	<u>Private Purpose Trust</u> <u>(71)</u>	<u>Investment Trust</u> <u>(72)</u>	<u>Pension Trust</u> <u>(73)</u>	<u>Activity</u> <u>(81)</u>
Assets And Deferred Outflows Of Resources				
Assets				
0100 Cash and Cash Equivalents	161,980			179,871
0110 Investments				
0130 Due From Other Funds				
0147 Due from Component Unit				
0150 Other Receivables				
0170 Inventories				
0180 Prepaid Expenses (Expenditures)				
0190 Other Current Assets				
0220 Buildings and Building Improvements (Net)				
0230 Machinery, Equipment and Furniture (Net)				
Total Assets	\$161,980			\$179,871
0910 Deferred Outflows of Resources				
Total Assets And Deferred Outflows Of Resources	\$161,980			\$179,871

LEA : 117596003 Northern Tioga SD

Printed 10/27/2016 4:24:23 PM

Amounts Expressed in Whole Dollars

	<u>Other Agency</u> <u>(89)</u>	<u>Discrete Component Units</u> <u>(98)</u>	<u>Discrete Component Units</u> <u>(99)</u>	<u>Total Fiduciary Funds</u>
Assets And Deferred Outflows Of Resources				
Assets				
0100 Cash and Cash Equivalents	441,390			783,241
0110 Investments	636,037			636,037
0130 Due From Other Funds				
0147 Due from Component Unit				
0150 Other Receivables				
0170 Inventories				
0180 Prepaid Expenses (Expenditures)				
0190 Other Current Assets				
0220 Buildings and Building Improvements (Net)				
0230 Machinery, Equipment and Furniture (Net)				
Total Assets	\$1,077,427			\$1,419,278
0910 Deferred Outflows of Resources				
Total Assets And Deferred Outflows Of Resources	\$1,077,427			\$1,419,278

LEA : 117596003 Northern Tioga SD

Printed 10/27/2016 4:24:23 PM

Amounts Expressed in Whole Dollars	<u>Private Purpose Trust</u> (71)	<u>Investment Trust</u> (72)	<u>Pension Trust</u> (73)	<u>Activity</u> (81)
Liabilities, Deferred Inflows Of Resources And Net Position				
Liabilities				
0400 Due to Other Funds				
0411 Due to Other Governments				
0412 Due to Primary Government				
0413 Due to Component Unit				
0420 Accounts Payable				
0430 Contracts Payable				
0450 Short-Term Payables				
0461 Accrued Salaries and Benefits				
0462 Payroll Deductions and Withholding				
0480 Unearned Revenues				
0490 Other Current Liabilities				179,871
Total Liabilities				\$179,871
0950 Deferred Inflows of Resources				
Net Position				
0791 Invested in Capital Assets, Net of Related Debt				
0009 Restricted Net Position (0792 – 0798)	161,980			
0799 Unrestricted Net Position				
Total Net Position	\$161,980			
Total Liabilities, Deferred Inflows Of Resources And Net Position	\$161,980			\$179,871

LEA : 117596003 Northern Tioga SD

Printed 10/27/2016 4:24:23 PM

Amounts Expressed in Whole Dollars	<u>Other Agency</u> <u>(89)</u>	<u>Discrete Component Units</u> <u>(98)</u>	<u>Discrete Component Units</u> <u>(99)</u>	<u>Total Fiduciary Funds</u>
Liabilities, Deferred Inflows Of Resources And Net Position				
Liabilities				
0400 Due to Other Funds				
0411 Due to Other Governments				
0412 Due to Primary Government				
0413 Due to Component Unit				
0420 Accounts Payable	16,702			16,702
0430 Contracts Payable				
0450 Short-Term Payables				
0461 Accrued Salaries and Benefits				
0462 Payroll Deductions and Withholding				
0480 Unearned Revenues				
0490 Other Current Liabilities	1,060,725			1,240,596
Total Liabilities	\$1,077,427			\$1,257,298
0950 Deferred Inflows of Resources				
Net Position				
0791 Invested in Capital Assets, Net of Related Debt				
0009 Restricted Net Position (0792 – 0798)				161,980
0799 Unrestricted Net Position				
Total Net Position				\$161,980
Total Liabilities, Deferred Inflows Of Resources And Net Position	\$1,077,427			\$1,419,278

Amounts Expressed in Whole Dollars	<u>Private Purpose Trust</u> <u>(71)</u>	<u>Investment Trust</u> <u>(72)</u>	<u>Pension Trust</u> <u>(73)</u>	<u>Discrete Component</u> <u>Units</u> <u>(98)</u>	<u>Discrete Component</u> <u>Units</u> <u>(99)</u>	<u>Total Fiduciary</u> <u>Funds</u>
Additions						
0091 Gifts and Contributions	9,050					9,050
0092 Other Additions	338					338
Deductions						
0093 Scholarships Awarded	4,955					4,955
0094 Other Deductions	10					10
Change In Net Position	\$4,423					\$4,423
0006 Net Position – Beginning of Fiscal Year	157,557					157,557
0007 Net Position Held in Trust for Pension Benefits						
Net Position - End of Fiscal Year	\$161,980					\$161,980

	<u>Revenue Reported In Current Year</u>	<u>Current Year Tax Accrual</u>	<u>Prior Year Tax Accrual</u>	<u>Taxes Collected In Current Year</u>
<u>Revenue from Local Sources</u>				
6111 Current Real Estate Taxes	7,264,912.67			7,264,912.67
6112 Interim Real Estate Taxes	39,814.78			39,814.78
6113 Public Utility Realty Taxes	11,298.92			11,298.92
6114 Payments in Lieu of Current Taxes - State / Local	33,955.73			33,955.73
6143 Current Act 511 Local Services Taxes	21,649.28			21,649.28
6151 Current Act 511 Earned Income Taxes	2,137,299.89			2,137,299.89
6153 Current Act 511 Real Estate Transfer Taxes	167,607.99			167,607.99
6411 Delinquent Real Estate Taxes	952,365.82			952,365.82
6500 Earnings on Investments	18,972.93			
6832 Federal IDEA Revenue Received as Pass Through	368,162.79			
6910 Rentals	214,747.00			
6920 Contributions and Donations from Private Sources	37,809.83			
6941 Regular Day School Tuition	2,418.24			
6942 Summer School Tuition	3,430.00			
6949 Other Tuition from Patrons	5,501.00			
6991 Refunds of a Prior Year Expenditure	35,450.52			
6999 Other Revenues Not Specified Above	49,375.23			
TOTAL Revenue from Local Sources	\$11,364,772.62			\$10,628,905.08

**Revenue Reported
In Current Year**

Revenue from State Sources

7110 Basic Education Funding	12,130,486.40		
7160 Tuition for Orphans Subsidy	46,684.71		
7220 Vocational Education	62,433.85		
7240 Driver Education - Student	5,775.00		
7271 Special Education funds for School-Aged Pupils	1,616,174.51		
7311 Pupil Transportation Subsidy	1,402,817.89		
7312 Nonpublic and Charter School Pupil Transportation Subsidy	23,485.00		
7330 Health Services (Medical, Dental, Nurse, Act 25)	37,862.19		
7340 State Property Tax Reduction Allocation	476,568.39		
7505 Ready to Learn Block Grant	446,252.00		
7509 Supplemental Equipment Grants	6,208.55		
7810 State Share of Social Security and Medicare Taxes	690,262.05		
7820 State Share of Retirement Contributions	2,292,539.11		
TOTAL Revenue from State Sources	\$19,237,549.65		

**Revenue Reported
In Current Year**

Revenue from Federal Sources

8514 NCLB, Title I - Improving the Academic Achievement of the Disadvantaged	487,106.02		
8515 NCLB, Title II - Preparing, Training and Recruiting High Quality Teachers and Principals	167,178.86		
8519 NCLB, Title VI - Flexibility and Accountability	79,855.00		
8521 Vocational Education - Operating Expenditures	32,984.41		
8810 School-Based Access Medicaid Reimbursement Program (SBAP) Reimbursements (Access)	171,439.40		
8820 Medical Assistance Reimbursement for Administrative Claiming (Quarterly) Program	8,746.28		
TOTAL Revenue from Federal Sources	\$947,309.97		

Revenue Reported
In Current Year

Other Financing Sources

9990 Insurance Recoveries	20,832.75		
TOTAL Other Financing Sources	\$20,832.75		
TOTAL FROM ALL SOURCES	\$31,570,464.99		\$10,628,905.08

Revenue from Local Sources	11,364,772.62
Revenue from State Sources	19,237,549.65
Revenue from Federal Sources	947,309.97
Other Financing Sources	20,832.75
TOTAL FROM ALL SOURCES	\$31,570,464.99

General Fund (10)

	<u>Total</u>
1000 Instruction	
100 Personnel Services – Salaries	
100 Personnel Services – Salaries	10,651,310.28
Total Personnel Services – Salaries	\$10,651,310.28
200 Personnel Services – Employee Benefits	
210 Group Insurance – Contracted Provider	2,987,534.07
220 Social Security Contributions	802,278.53
230 PSERS Retirement Contributions	2,749,069.27
250 Unemployment Compensation	2,027.65
260 Workers’ Compensation	58,851.52
290 Other Current Employee Benefits	136,065.80
Total Personnel Services – Employee Benefits	\$6,735,826.84
300 Purchased Professional and Technical Services	
322 Professional Educational Services – Ius	113,897.96
330 Other Professional Services	89,515.57
340 Technical Services	755.00
Total Purchased Professional and Technical Services	\$204,168.53
400 Purchased Property Services	
430 Repairs and Maintenance Services	7,485.56
440 Rentals	68,390.89
Total Purchased Property Services	\$75,876.45
500 Other Purchased Services	
510 Student Transportation Services	20,393.48
520 Insurance – General	6,637.00
530 Communications	40,039.48
550 Printing and Binding	2,017.43
561 Tuition To Other School Districts Within the State	150,987.81
562 Tuition To Pennsylvania Charter Schools	628,544.29
563 Tuition To Nonpublic Schools	13,105.00
564 Tuition To Career and Technology Centers	8,958.00
567 Tuition To Approved Private Schools (APS) and PA Chartered Schools for the Deaf and Blind	12,352.19
568 Tuition To Private Residential Rehabilitative Institutions (PRRI) [In-State] and Detention Centers	360.00
569 Tuition – Other	65,061.50
580 Travel	5,915.61
Total Other Purchased Services	\$954,371.79
600 Supplies	
610 General Supplies	166,332.16
630 Food	12,879.77
640 Books and Periodicals	123,989.31
Total Supplies	\$303,201.24
700 Property	
750 Equipment – Original and Additional	105,952.09
760 Equipment – Replacement	60,222.00
Total Property	\$166,174.09

LEA : 117596003 Northern Tioga SD

Printed 10/27/2016 4:24:29 PM

General Fund (10)

1000 Instruction	<u>Total</u>
800 <u>Other Objects</u>	
810 Dues and Fees	132.00
Total Other Objects	\$132.00
Total 1000 Instruction	\$19,091,061.22

General Fund (10)

1100 Regular Programs – Elementary / Secondary

	<u>Elementary</u>	<u>Secondary</u>	<u>Federal</u>	<u>Total</u>
100 Personnel Services – Salaries				
100 Personnel Services – Salaries	3,924,874.03	3,099,637.53	397,075.25	7,421,586.81
Total Personnel Services – Salaries	\$3,924,874.03	\$3,099,637.53	\$397,075.25	\$7,421,586.81
200 Personnel Services – Employee Benefits				
210 Group Insurance – Contracted Provider	1,014,165.32	776,042.09	92,819.07	1,883,026.48
220 Social Security Contributions	296,600.88	233,251.62	30,140.16	559,992.66
230 PSERS Retirement Contributions	1,003,436.98	803,628.19	102,166.46	1,909,231.63
250 Unemployment Compensation	230.18	163.57	562.47	956.22
260 Workers' Compensation	21,716.37	17,127.28	2,196.00	41,039.65
290 Other Current Employee Benefits	87,786.18	23,969.50	200.00	111,955.68
Total Personnel Services – Employee Benefits	\$2,423,935.91	\$1,854,182.25	\$228,084.16	\$4,506,202.32
300 Purchased Professional and Technical Services				
330 Other Professional Services		25,009.90		25,009.90
Total Purchased Professional and Technical Services		\$25,009.90		\$25,009.90
400 Purchased Property Services				
430 Repairs and Maintenance Services	4,150.17	1,759.50		5,909.67
440 Rentals	35,462.32	21,216.57		56,678.89
Total Purchased Property Services	\$39,612.49	\$22,976.07		\$62,588.56
500 Other Purchased Services				
510 Student Transportation Services	6,849.38	6,471.31		13,320.69
530 Communications	20,019.74	20,019.74		40,039.48
550 Printing and Binding		2,017.43		2,017.43
561 Tuition To Other School Districts Within the State		63,839.87		63,839.87
562 Tuition To Pennsylvania Charter Schools	244,095.12	244,095.11		488,190.23
563 Tuition To Nonpublic Schools	888.00	9,917.00		10,805.00
569 Tuition – Other	9,375.00	9,375.00		18,750.00
580 Travel	15.12	190.08		205.20
Total Other Purchased Services	\$281,242.36	\$355,925.54		\$637,167.90
600 Supplies				
610 General Supplies	58,205.23	61,680.61		119,885.84
630 Food	1,352.95	249.13		1,602.08
640 Books and Periodicals	49,725.60	71,657.14		121,382.74
Total Supplies	\$109,283.78	\$133,586.88		\$242,870.66
700 Property				
750 Equipment – Original and Additional	37,545.06	43,045.00		80,590.06
760 Equipment – Replacement	8,740.00	49,097.00		57,837.00
Total Property	\$46,285.06	\$92,142.00		\$138,427.06
800 Other Objects				
810 Dues and Fees	132.00			132.00
Total Other Objects	\$132.00			\$132.00
Total 1100 Regular Programs – Elementary / Secondary	\$6,825,365.63	\$5,583,460.17	\$625,159.41	\$13,033,985.21

General Fund (10)

1110 Regular Programs

	<u>Elementary</u>	<u>Secondary</u>	<u>Federal</u>	<u>Total</u>
100 Personnel Services – Salaries				
100 Personnel Services – Salaries	3,924,874.03	3,099,637.53	1,838.00	7,026,349.56
Total Personnel Services – Salaries	\$3,924,874.03	\$3,099,637.53	\$1,838.00	\$7,026,349.56
200 Personnel Services – Employee Benefits				
210 Group Insurance – Contracted Provider	1,014,165.32	776,042.09		1,790,207.41
220 Social Security Contributions	296,600.88	233,251.62	140.61	529,993.11
230 PSERS Retirement Contributions	1,003,436.98	803,628.19	474.94	1,807,540.11
250 Unemployment Compensation	230.18	163.57	16.17	409.92
260 Workers' Compensation	21,716.37	17,127.28	10.11	38,853.76
290 Other Current Employee Benefits	87,786.18	23,969.50		111,755.68
Total Personnel Services – Employee Benefits	\$2,423,935.91	\$1,854,182.25	\$641.83	\$4,278,759.99
300 Purchased Professional and Technical Services				
330 Other Professional Services		25,009.90		25,009.90
Total Purchased Professional and Technical Services		\$25,009.90		\$25,009.90
400 Purchased Property Services				
430 Repairs and Maintenance Services	4,150.17	1,759.50		5,909.67
440 Rentals	35,462.32	21,216.57		56,678.89
Total Purchased Property Services	\$39,612.49	\$22,976.07		\$62,588.56
500 Other Purchased Services				
510 Student Transportation Services	6,849.38	6,471.31		13,320.69
530 Communications	20,019.74	20,019.74		40,039.48
550 Printing and Binding		2,017.43		2,017.43
561 Tuition To Other School Districts Within the State		63,839.87		63,839.87
562 Tuition To Pennsylvania Charter Schools	244,095.12	244,095.11		488,190.23
563 Tuition To Nonpublic Schools	888.00	9,917.00		10,805.00
569 Tuition – Other	9,375.00	9,375.00		18,750.00
580 Travel	15.12	190.08		205.20
Total Other Purchased Services	\$281,242.36	\$355,925.54		\$637,167.90
600 Supplies				
610 General Supplies	58,205.23	61,680.61		119,885.84
630 Food	1,352.95	249.13		1,602.08
640 Books and Periodicals	49,725.60	71,657.14		121,382.74
Total Supplies	\$109,283.78	\$133,586.88		\$242,870.66
700 Property				
750 Equipment – Original and Additional	37,545.06	43,045.00		80,590.06
760 Equipment – Replacement	8,740.00	49,097.00		57,837.00
Total Property	\$46,285.06	\$92,142.00		\$138,427.06
800 Other Objects				
810 Dues and Fees	132.00			132.00
Total Other Objects	\$132.00			\$132.00
Total 1110 Regular Programs	\$6,825,365.63	\$5,583,460.17	\$2,479.83	\$12,411,305.63

General Fund (10)

1190 Federally-Funded Regular Programs

100 Personnel Services – Salaries

100 Personnel Services – Salaries

Total Personnel Services – Salaries

200 Personnel Services – Employee Benefits

210 Group Insurance – Contracted Provider

220 Social Security Contributions

230 PSERS Retirement Contributions

250 Unemployment Compensation

260 Workers' Compensation

290 Other Current Employee Benefits

Total Personnel Services – Employee Benefits

Total 1190 Federally-Funded Regular Programs

	<u>Elementary</u>	<u>Secondary</u>	<u>Federal</u>	<u>Total</u>
			395,237.25	395,237.25
			\$395,237.25	\$395,237.25
			92,819.07	92,819.07
			29,999.55	29,999.55
			101,691.52	101,691.52
			546.30	546.30
			2,185.89	2,185.89
			200.00	200.00
			\$227,442.33	\$227,442.33
			\$622,679.58	\$622,679.58

General Fund (10)

1200 Special Programs – Elementary / Secondary

	<u>Elementary</u>	<u>Secondary</u>	<u>Federal</u>	<u>Total</u>
100 Personnel Services – Salaries				
100 Personnel Services – Salaries	1,023,093.55	1,139,656.62	64,816.68	2,227,566.85
Total Personnel Services – Salaries	\$1,023,093.55	\$1,139,656.62	\$64,816.68	\$2,227,566.85
200 Personnel Services – Employee Benefits				
210 Group Insurance – Contracted Provider	361,964.72	446,286.13	48,110.83	856,361.68
220 Social Security Contributions	76,445.38	85,115.66	4,958.47	166,519.51
230 PSERS Retirement Contributions	263,690.71	296,405.78	16,748.62	576,845.11
250 Unemployment Compensation	345.97	55.99		401.96
260 Workers' Compensation	5,243.01	6,119.79	926.88	12,289.68
290 Other Current Employee Benefits	8,866.12	2,209.00		11,075.12
Total Personnel Services – Employee Benefits	\$716,555.91	\$836,192.35	\$70,744.80	\$1,623,493.06
300 Purchased Professional and Technical Services				
322 Professional Educational Services – Ius	63,106.06	50,791.90		113,897.96
330 Other Professional Services	27,535.34	27,535.33		55,070.67
340 Technical Services			755.00	755.00
Total Purchased Professional and Technical Services	\$90,641.40	\$78,327.23	\$755.00	\$169,723.63
400 Purchased Property Services				
430 Repairs and Maintenance Services	109.20	110.21		219.41
Total Purchased Property Services	\$109.20	\$110.21		\$219.41
500 Other Purchased Services				
510 Student Transportation Services	1,157.27	3,577.02		4,734.29
561 Tuition To Other School Districts Within the State	31,880.22	55,187.72		87,067.94
562 Tuition To Pennsylvania Charter Schools	70,177.03	70,177.03		140,354.06
567 Tuition To Approved Private Schools (APS) and PA Chartered Schools for the Deaf and Blind	6,176.10	6,176.09		12,352.19
568 Tuition To Private Residential Rehabilitative Institutions (PRRI) [In-State] and Detention Centers		360.00		360.00
569 Tuition – Other	22,805.75	22,805.75		45,611.50
580 Travel	109.68	109.68		219.36
Total Other Purchased Services	\$132,306.05	\$158,393.29		\$290,699.34
600 Supplies				
610 General Supplies	5,212.56	6,110.67		11,323.23
630 Food	942.32	2,490.18		3,432.50
640 Books and Periodicals		1,106.57		1,106.57
Total Supplies	\$6,154.88	\$9,707.42		\$15,862.30
700 Property				
750 Equipment – Original and Additional	2,714.82	2,714.82	311.60	5,741.24
760 Equipment – Replacement		1,360.00		1,360.00
Total Property	\$2,714.82	\$4,074.82	\$311.60	\$7,101.24
Total 1200 Special Programs – Elementary / Secondary	\$1,971,575.81	\$2,226,461.94	\$136,628.08	\$4,334,665.83

General Fund (10)

1210 Life Skills Support

	<u>Elementary</u>	<u>Secondary</u>	<u>Federal</u>	<u>Total</u>
100 Personnel Services – Salaries				
100 Personnel Services – Salaries	175,597.83	108,859.18		284,457.01
Total Personnel Services – Salaries	\$175,597.83	\$108,859.18		\$284,457.01
200 Personnel Services – Employee Benefits				
210 Group Insurance – Contracted Provider	69,979.19	54,118.79		124,097.98
220 Social Security Contributions	13,261.28	8,131.54		21,392.82
230 PSERS Retirement Contributions	44,539.12	27,819.97		72,359.09
250 Unemployment Compensation	197.67	(43.17)		154.50
260 Workers' Compensation	966.37	595.80		1,562.17
290 Other Current Employee Benefits	100.00	1,848.00		1,948.00
Total Personnel Services – Employee Benefits	\$129,043.63	\$92,470.93		\$221,514.56
500 Other Purchased Services				
510 Student Transportation Services	834.13	3,180.58		4,014.71
561 Tuition To Other School Districts Within the State	2,784.00	6,615.66		9,399.66
569 Tuition – Other	14,608.75	14,608.75		29,217.50
Total Other Purchased Services	\$18,226.88	\$24,404.99		\$42,631.87
600 Supplies				
610 General Supplies	626.92	1,492.65		2,119.57
630 Food	633.54	2,125.00		2,758.54
640 Books and Periodicals		1,106.57		1,106.57
Total Supplies	\$1,260.46	\$4,724.22		\$5,984.68
700 Property				
760 Equipment – Replacement		1,360.00		1,360.00
Total Property		\$1,360.00		\$1,360.00
Total 1210 Life Skills Support	\$324,128.80	\$231,819.32		\$555,948.12

General Fund (10)

1220 Sensory Support

	<u>Elementary</u>	<u>Secondary</u>	<u>Federal</u>	<u>Total</u>
100 Personnel Services – Salaries				
100 Personnel Services – Salaries	35,164.76	35,164.75	36,416.40	106,745.91
Total Personnel Services – Salaries	\$35,164.76	\$35,164.75	\$36,416.40	\$106,745.91
200 Personnel Services – Employee Benefits				
210 Group Insurance – Contracted Provider	3,667.69	3,667.69	17,890.32	25,225.70
220 Social Security Contributions	2,602.26	2,602.25	2,785.85	7,990.36
230 PSERS Retirement Contributions	9,086.62	9,086.61	9,410.00	27,583.23
250 Unemployment Compensation	2.51	2.51		5.02
260 Workers' Compensation	33.17	33.16	520.75	587.08
Total Personnel Services – Employee Benefits	\$15,392.25	\$15,392.22	\$30,606.92	\$61,391.39
300 Purchased Professional and Technical Services				
322 Professional Educational Services – lus	10,158.40	10,158.39		20,316.79
Total Purchased Professional and Technical Services	\$10,158.40	\$10,158.39		\$20,316.79
400 Purchased Property Services				
430 Repairs and Maintenance Services	109.20	109.19		218.39
Total Purchased Property Services	\$109.20	\$109.19		\$218.39
600 Supplies				
610 General Supplies	464.81	464.80		929.61
Total Supplies	\$464.81	\$464.80		\$929.61
Total 1220 Sensory Support	\$61,289.42	\$61,289.35	\$67,023.32	\$189,602.09

General Fund (10)

1230 Emotional Support

	<u>Elementary</u>	<u>Secondary</u>	<u>Federal</u>	<u>Total</u>
100 Personnel Services – Salaries				
100 Personnel Services – Salaries	120,185.53	114,473.13		234,658.66
Total Personnel Services – Salaries	\$120,185.53	\$114,473.13		\$234,658.66
200 Personnel Services – Employee Benefits				
210 Group Insurance – Contracted Provider	30,398.58	41,932.30		72,330.88
220 Social Security Contributions	9,270.28	8,495.45		17,765.73
230 PSERS Retirement Contributions	31,185.79	29,595.56		60,781.35
250 Unemployment Compensation	12.83	7.34		20.17
260 Workers' Compensation	671.95	629.86		1,301.81
290 Other Current Employee Benefits		61.00		61.00
Total Personnel Services – Employee Benefits	\$71,539.43	\$80,721.51		\$152,260.94
300 Purchased Professional and Technical Services				
322 Professional Educational Services – Ius	40,633.52	40,633.51		81,267.03
Total Purchased Professional and Technical Services	\$40,633.52	\$40,633.51		\$81,267.03
400 Purchased Property Services				
430 Repairs and Maintenance Services		1.02		1.02
Total Purchased Property Services		\$1.02		\$1.02
500 Other Purchased Services				
510 Student Transportation Services	285.64	190.74		476.38
561 Tuition To Other School Districts Within the State	29,096.22	48,572.06		77,668.28
568 Tuition To Private Residential Rehabilitative Institutions (PRRI) [In-State] and Detention Centers		360.00		360.00
569 Tuition – Other	8,197.00	8,197.00		16,394.00
Total Other Purchased Services	\$37,578.86	\$57,319.80		\$94,898.66
600 Supplies				
610 General Supplies	1,544.63	1,282.59		2,827.22
630 Food		56.41		56.41
Total Supplies	\$1,544.63	\$1,339.00		\$2,883.63
Total 1230 Emotional Support	\$271,481.97	\$294,487.97		\$565,969.94

General Fund (10)

1240 Academic Support

	<u>Elementary</u>	<u>Secondary</u>	<u>Federal</u>	<u>Total</u>
100 Personnel Services – Salaries				
100 Personnel Services – Salaries	682,635.59	787,387.81	28,400.28	1,498,423.68
Total Personnel Services – Salaries	\$682,635.59	\$787,387.81	\$28,400.28	\$1,498,423.68
200 Personnel Services – Employee Benefits				
210 Group Insurance – Contracted Provider	257,919.26	306,727.14	30,220.51	594,866.91
220 Social Security Contributions	51,044.64	59,317.40	2,172.62	112,534.66
230 PSERS Retirement Contributions	176,421.84	205,673.11	7,338.62	389,433.57
250 Unemployment Compensation	124.20	75.34		199.54
260 Workers' Compensation	3,519.23	4,345.34	406.13	8,270.70
290 Other Current Employee Benefits	8,766.12	300.00		9,066.12
Total Personnel Services – Employee Benefits	\$497,795.29	\$576,438.33	\$40,137.88	\$1,114,371.50
300 Purchased Professional and Technical Services				
322 Professional Educational Services – Ius	5,686.87			5,686.87
Total Purchased Professional and Technical Services	\$5,686.87			\$5,686.87
600 Supplies				
610 General Supplies	2,081.35	1,853.90		3,935.25
Total Supplies	\$2,081.35	\$1,853.90		\$3,935.25
Total 1240 Academic Support	\$1,188,199.10	\$1,365,680.04	\$68,538.16	\$2,622,417.30

General Fund (10)

	<u>Elementary</u>	<u>Secondary</u>	<u>Federal</u>	<u>Total</u>
1241 Learning Support – Public				
100 Personnel Services – Salaries				
100 Personnel Services – Salaries	632,116.93	774,658.47	28,400.28	1,435,175.68
Total Personnel Services – Salaries	\$632,116.93	\$774,658.47	\$28,400.28	\$1,435,175.68
200 Personnel Services – Employee Benefits				
210 Group Insurance – Contracted Provider	245,280.27	303,567.52	30,220.51	579,068.30
220 Social Security Contributions	47,343.68	58,384.43	2,172.62	107,900.73
230 PSERS Retirement Contributions	163,367.79	202,383.77	7,338.62	373,090.18
250 Unemployment Compensation	57.33	58.60		115.93
260 Workers' Compensation	3,241.36	4,275.17	406.13	7,922.66
290 Other Current Employee Benefits	8,766.12	300.00		9,066.12
Total Personnel Services – Employee Benefits	\$468,056.55	\$568,969.49	\$40,137.88	\$1,077,163.92
300 Purchased Professional and Technical Services				
322 Professional Educational Services – Ius	5,686.87			5,686.87
Total Purchased Professional and Technical Services	\$5,686.87			\$5,686.87
600 Supplies				
610 General Supplies	2,032.77	1,853.90		3,886.67
Total Supplies	\$2,032.77	\$1,853.90		\$3,886.67
Total 1241 Learning Support – Public	\$1,107,893.12	\$1,345,481.86	\$68,538.16	\$2,521,913.14

General Fund (10)

1243 Gifted Support

	<u>Elementary</u>	<u>Secondary</u>	<u>Federal</u>	<u>Total</u>
100 Personnel Services – Salaries				
100 Personnel Services – Salaries	50,518.66	12,729.34		63,248.00
Total Personnel Services – Salaries	\$50,518.66	\$12,729.34		\$63,248.00
200 Personnel Services – Employee Benefits				
210 Group Insurance – Contracted Provider	12,638.99	3,159.62		15,798.61
220 Social Security Contributions	3,700.96	932.97		4,633.93
230 PSERS Retirement Contributions	13,054.05	3,289.34		16,343.39
250 Unemployment Compensation	66.87	16.74		83.61
260 Workers' Compensation	277.87	70.17		348.04
Total Personnel Services – Employee Benefits	\$29,738.74	\$7,468.84		\$37,207.58
600 Supplies				
610 General Supplies	48.58			48.58
Total Supplies	\$48.58			\$48.58
Total 1243 Gifted Support	\$80,305.98	\$20,198.18		\$100,504.16

LEA : 117596003 Northern Tioga SD

Printed 10/27/2016 4:24:29 PM

General Fund (10)

1260 Physical Support

300 Purchased Professional and Technical Services

330 Other Professional Services

Total Purchased Professional and Technical Services

Total 1260 Physical Support

Elementary

Secondary

Federal

Total

27,535.34

27,535.33

55,070.67

\$27,535.34

\$27,535.33

\$55,070.67

\$27,535.34

\$27,535.33

\$55,070.67

General Fund (10)

1270 Multi-Handicapped Support

100 Personnel Services – Salaries

100 Personnel Services – Salaries

Total Personnel Services – Salaries

200 Personnel Services – Employee Benefits

210 Group Insurance – Contracted Provider

220 Social Security Contributions

230 PSERS Retirement Contributions

250 Unemployment Compensation

260 Workers' Compensation

Total Personnel Services – Employee Benefits

500 Other Purchased Services

510 Student Transportation Services

Total Other Purchased Services

600 Supplies

610 General Supplies

Total Supplies

Total 1270 Multi-Handicapped Support

	<u>Elementary</u>	<u>Secondary</u>	<u>Federal</u>	<u>Total</u>
		84,261.91		84,261.91
		\$84,261.91		\$84,261.91
		39,840.21		39,840.21
		6,302.10		6,302.10
		21,773.19		21,773.19
		5.21		5.21
		463.35		463.35
		\$68,384.06		\$68,384.06
		168.20		168.20
		\$168.20		\$168.20
		521.88		521.88
		\$521.88		\$521.88
		\$153,336.05		\$153,336.05

General Fund (10)

1280 Early Intervention Support

300 Purchased Professional and Technical Services

322 Professional Educational Services – lus

Total Purchased Professional and Technical Services

Total 1280 Early Intervention Support

	<u>Elementary</u>	<u>Secondary</u>	<u>Federal</u>	<u>Total</u>
	6,627.27			6,627.27
	\$6,627.27			\$6,627.27
	\$6,627.27			\$6,627.27

General Fund (10)

1290 Special Programs - Other Support

	<u>Elementary</u>	<u>Secondary</u>	<u>Federal</u>	<u>Total</u>
100 Personnel Services – Salaries				
100 Personnel Services – Salaries	9,509.84	9,509.84		19,019.68
Total Personnel Services – Salaries	\$9,509.84	\$9,509.84		\$19,019.68
200 Personnel Services – Employee Benefits				
220 Social Security Contributions	266.92	266.92		533.84
230 PSERS Retirement Contributions	2,457.34	2,457.34		4,914.68
250 Unemployment Compensation	8.76	8.76		17.52
260 Workers' Compensation	52.29	52.28		104.57
Total Personnel Services – Employee Benefits	\$2,785.31	\$2,785.30		\$5,570.61
300 Purchased Professional and Technical Services				
340 Technical Services			755.00	755.00
Total Purchased Professional and Technical Services			\$755.00	\$755.00
500 Other Purchased Services				
510 Student Transportation Services	37.50	37.50		75.00
562 Tuition To Pennsylvania Charter Schools	70,177.03	70,177.03		140,354.06
567 Tuition To Approved Private Schools (APS) and PA Chartered Schools for the Deaf and Blind	6,176.10	6,176.09		12,352.19
580 Travel	109.68	109.68		219.36
Total Other Purchased Services	\$76,500.31	\$76,500.30		\$153,000.61
600 Supplies				
610 General Supplies	494.85	494.85		989.70
630 Food	308.78	308.77		617.55
Total Supplies	\$803.63	\$803.62		\$1,607.25
700 Property				
750 Equipment – Original and Additional	2,714.82	2,714.82	311.60	5,741.24
Total Property	\$2,714.82	\$2,714.82	\$311.60	\$5,741.24
Total 1290 Special Programs - Other Support	\$92,313.91	\$92,313.88	\$1,066.60	\$185,694.39

General Fund (10)

1300 Vocational Education

	<u>Elementary</u>	<u>Secondary</u>	<u>Federal</u>	<u>Total</u>
100 Personnel Services – Salaries				
100 Personnel Services – Salaries		745,751.79		745,751.79
Total Personnel Services – Salaries		\$745,751.79		\$745,751.79
200 Personnel Services – Employee Benefits				
210 Group Insurance – Contracted Provider		188,409.62		188,409.62
220 Social Security Contributions		56,298.33		56,298.33
230 PSERS Retirement Contributions		197,213.68		197,213.68
250 Unemployment Compensation		32.97		32.97
260 Workers' Compensation		4,113.85		4,113.85
290 Other Current Employee Benefits		12,735.00		12,735.00
Total Personnel Services – Employee Benefits		\$458,803.45		\$458,803.45
400 Purchased Property Services				
430 Repairs and Maintenance Services		1,356.48		1,356.48
Total Purchased Property Services		\$1,356.48		\$1,356.48
500 Other Purchased Services				
510 Student Transportation Services			2,338.50	2,338.50
564 Tuition To Career and Technology Centers		8,958.00		8,958.00
580 Travel		1,645.30		1,645.30
Total Other Purchased Services		\$10,603.30	\$2,338.50	\$12,941.80
600 Supplies				
610 General Supplies		17,677.85	15,692.45	33,370.30
630 Food		7,845.19		7,845.19
640 Books and Periodicals		1,500.00		1,500.00
Total Supplies		\$27,023.04	\$15,692.45	\$42,715.49
700 Property				
750 Equipment – Original and Additional		7,450.49	12,170.30	19,620.79
760 Equipment – Replacement		1,025.00		1,025.00
Total Property		\$8,475.49	\$12,170.30	\$20,645.79
Total 1300 Vocational Education		\$1,252,013.55	\$30,201.25	\$1,282,214.80

General Fund (10)

1400 Other Instructional Programs – Elementary / Secondary

	<u>Elementary</u>	<u>Secondary</u>	<u>Federal</u>	<u>Total</u>
100 Personnel Services – Salaries				
100 Personnel Services – Salaries	3,983.80	51,266.99		55,250.79
Total Personnel Services – Salaries	\$3,983.80	\$51,266.99		\$55,250.79
200 Personnel Services – Employee Benefits				
210 Group Insurance – Contracted Provider		7,125.07		7,125.07
220 Social Security Contributions	304.78	3,905.25		4,210.03
230 PSERS Retirement Contributions	1,029.42	13,247.43		14,276.85
250 Unemployment Compensation		121.49		121.49
260 Workers' Compensation	21.93	278.47		300.40
Total Personnel Services – Employee Benefits	\$1,356.13	\$24,677.71		\$26,033.84
300 Purchased Professional and Technical Services				
330 Other Professional Services		9,435.00		9,435.00
Total Purchased Professional and Technical Services		\$9,435.00		\$9,435.00
400 Purchased Property Services				
440 Rentals		11,712.00		11,712.00
Total Purchased Property Services		\$11,712.00		\$11,712.00
500 Other Purchased Services				
520 Insurance – General		6,637.00		6,637.00
561 Tuition To Other School Districts Within the State		80.00		80.00
563 Tuition To Nonpublic Schools		2,300.00		2,300.00
569 Tuition – Other		700.00		700.00
580 Travel		3,845.75		3,845.75
Total Other Purchased Services		\$13,562.75		\$13,562.75
600 Supplies				
610 General Supplies		1,752.79		1,752.79
Total Supplies		\$1,752.79		\$1,752.79
Total 1400 Other Instructional Programs – Elementary / Secondary	\$5,339.93	\$112,407.24		\$117,747.17

General Fund (10)

1410 Drivers' Education

100 Personnel Services – Salaries

100 Personnel Services – Salaries

Total Personnel Services – Salaries

200 Personnel Services – Employee Benefits

210 Group Insurance – Contracted Provider

220 Social Security Contributions

230 PSERS Retirement Contributions

250 Unemployment Compensation

260 Workers' Compensation

Total Personnel Services – Employee Benefits

400 Purchased Property Services

440 Rentals

Total Purchased Property Services

500 Other Purchased Services

520 Insurance – General

Total Other Purchased Services

600 Supplies

610 General Supplies

Total Supplies

Total 1410 Drivers' Education

Elementary

Secondary

Federal

Total

38,161.99

38,161.99

\$38,161.99

\$38,161.99

7,125.07

7,125.07

2,899.47

2,899.47

9,861.09

9,861.09

51.46

51.46

209.98

209.98

\$20,147.07

\$20,147.07

11,712.00

11,712.00

\$11,712.00

\$11,712.00

6,637.00

6,637.00

\$6,637.00

\$6,637.00

1,743.25

1,743.25

\$1,743.25

\$1,743.25

\$78,401.31

\$78,401.31

LEA : 117596003 Northern Tioga SD

Printed 10/27/2016 4:24:29 PM

General Fund (10)

1420 Summer School

500 Other Purchased Services

563 Tuition To Nonpublic Schools

Total Other Purchased Services

600 Supplies

610 General Supplies

Total Supplies

Total 1420 Summer School

Elementary

Secondary

Federal

Total

2,300.00

2,300.00

\$2,300.00

\$2,300.00

9.54

9.54

\$9.54

\$9.54

\$2,309.54

\$2,309.54

General Fund (10)

1430 Homebound Instruction

100 Personnel Services – Salaries

100 Personnel Services – Salaries

Total Personnel Services – Salaries

200 Personnel Services – Employee Benefits

220 Social Security Contributions

230 PSERS Retirement Contributions

250 Unemployment Compensation

260 Workers' Compensation

Total Personnel Services – Employee Benefits

500 Other Purchased Services

561 Tuition To Other School Districts Within the State

569 Tuition – Other

580 Travel

Total Other Purchased Services

Total 1430 Homebound Instruction

	<u>Elementary</u>	<u>Secondary</u>	<u>Federal</u>	<u>Total</u>
		13,105.00		13,105.00
		\$13,105.00		\$13,105.00
		1,005.78		1,005.78
		3,386.34		3,386.34
		70.03		70.03
		68.49		68.49
		\$4,530.64		\$4,530.64
		80.00		80.00
		700.00		700.00
		3,845.75		3,845.75
		\$4,625.75		\$4,625.75
		\$22,261.39		\$22,261.39

General Fund (10)

1440 Alternative Regular Education Programs

Elementary

Secondary

Federal

Total

300 Purchased Professional and Technical Services

330 Other Professional Services

9,435.00

9,435.00

Total Purchased Professional and Technical Services

\$9,435.00

\$9,435.00

Total 1440 Alternative Regular Education Programs

\$9,435.00

\$9,435.00

General Fund (10)

1442 Alternative Education Programs

300 Purchased Professional and Technical Services

330 Other Professional Services

Total Purchased Professional and Technical Services

Total 1442 Alternative Education Programs

Elementary

Secondary

Federal

Total

9,435.00

9,435.00

\$9,435.00

\$9,435.00

\$9,435.00

\$9,435.00

General Fund (10)

	<u>Elementary</u>	<u>Secondary</u>	<u>Federal</u>	<u>Total</u>
1450 Instructional Programs Outside the Established School Day				
100 Personnel Services – Salaries				
100 Personnel Services – Salaries	3,983.80			3,983.80
Total Personnel Services – Salaries	\$3,983.80			\$3,983.80
200 Personnel Services – Employee Benefits				
220 Social Security Contributions	304.78			304.78
230 PSERS Retirement Contributions	1,029.42			1,029.42
260 Workers’ Compensation	21.93			21.93
Total Personnel Services – Employee Benefits	\$1,356.13			\$1,356.13
Total 1450 Instructional Programs Outside the Established School Day	\$5,339.93			\$5,339.93

General Fund (10)

1800 Pre-Kindergarten

Elementary

Secondary

Federal

Total

100 Personnel Services – Salaries

100 Personnel Services – Salaries

201,154.04

Total Personnel Services – Salaries

\$201,154.04

200 Personnel Services – Employee Benefits

210 Group Insurance – Contracted Provider

52,611.22

220 Social Security Contributions

15,258.00

230 PSERS Retirement Contributions

51,502.00

250 Unemployment Compensation

515.01

260 Workers' Compensation

1,107.94

290 Other Current Employee Benefits

300.00

Total Personnel Services – Employee Benefits

\$121,294.17

Total 1800 Pre-Kindergarten

\$322,448.21

General Fund (10)

1801 Pre-K Instruction

Elementary Secondary Federal Total

100 Personnel Services – Salaries				
100 Personnel Services – Salaries				201,154.04
Total Personnel Services – Salaries				\$201,154.04
200 Personnel Services – Employee Benefits				
210 Group Insurance – Contracted Provider				52,611.22
220 Social Security Contributions				15,258.00
230 PSERS Retirement Contributions				51,502.00
250 Unemployment Compensation				515.01
260 Workers' Compensation				1,107.94
290 Other Current Employee Benefits				300.00
Total Personnel Services – Employee Benefits				\$121,294.17
Total 1801 Pre-K Instruction				\$322,448.21

General Fund (10)

2000 Support Services

Total

100 Personnel Services – Salaries

100 Personnel Services – Salaries 3,176,373.70

Total Personnel Services – Salaries \$3,176,373.70

200 Personnel Services – Employee Benefits

210 Group Insurance – Contracted Provider 884,867.53

220 Social Security Contributions 240,966.92

230 PSERS Retirement Contributions 825,347.36

240 Tuition Reimbursement 63,522.60

250 Unemployment Compensation 309.26

260 Workers' Compensation 18,486.22

290 Other Current Employee Benefits 16,378.66

Total Personnel Services – Employee Benefits \$2,049,878.55

300 Purchased Professional and Technical Services

310 Official / Administrative Services 24,777.74

329 Professional Educational Services – Other 20,747.00

330 Other Professional Services 104,962.80

340 Technical Services 130,296.15

350 Security / Safety Services 1,500.00

390 Other Purchased Professional and Technical Services 1,496.00

Total Purchased Professional and Technical Services \$283,779.69

400 Purchased Property Services

410 Cleaning Services 33,056.26

420 Utility Services 98,837.13

430 Repairs and Maintenance Services 90,596.31

440 Rentals 80,318.03

Total Purchased Property Services \$302,807.73

500 Other Purchased Services

510 Student Transportation Services 1,006.90

513 Contracted Carriers 1,883,093.33

516 Student Transportation Services From the IU 28,232.89

520 Insurance – General 14,424.49

523 General Property and Liability Insurance 136,192.00

530 Communications 74,664.30

549 Other Advertising/Public Relations 10,590.45

550 Printing and Binding 24,125.00

580 Travel 86,989.24

591 Services Purchased Locally 765.30

592 Services Purchased From Another LEA Within the State 2,641.68

599 Other Miscellaneous Purchased Services 708.58

Total Other Purchased Services \$2,263,434.16

600 Supplies

610 General Supplies 268,981.01

620 Energy 405,616.70

630 Food 11,492.79

General Fund (10)

2000 Support Services

Total

600 Supplies

640 Books and Periodicals 137,721.63

650 Supplies & Fees – Technology Related 4,260.97

Total Supplies \$828,073.10

700 Property

750 Equipment – Original and Additional 89,038.96

760 Equipment – Replacement 78,591.24

Total Property \$167,630.20

800 Other Objects

810 Dues and Fees 17,500.46

Total Other Objects \$17,500.46

Total 2000 Support Services \$9,089,477.59

General Fund (10)

	<u>Elementary</u>	<u>Secondary</u>	<u>Federal</u>	<u>Total</u>
2100 Support Services – Students				
100 Personnel Services – Salaries				
100 Personnel Services – Salaries	56,792.27	272,576.85	112,879.51	546,122.93
Total Personnel Services – Salaries	\$56,792.27	\$272,576.85	\$112,879.51	\$546,122.93
200 Personnel Services – Employee Benefits				
210 Group Insurance – Contracted Provider	21,424.01	95,762.38	35,646.94	175,224.38
220 Social Security Contributions	4,181.53	20,288.16	8,556.95	40,867.01
230 PSERS Retirement Contributions	14,675.22	70,538.13	29,168.14	141,222.48
250 Unemployment Compensation	5.02	17.16	2.51	30.03
260 Workers' Compensation	310.20	1,107.73	1,014.62	3,003.77
290 Other Current Employee Benefits		1,548.00		1,548.00
Total Personnel Services – Employee Benefits	\$40,595.98	\$189,261.56	\$74,389.16	\$361,895.67
300 Purchased Professional and Technical Services				
329 Professional Educational Services – Other		20,747.00		20,747.00
Total Purchased Professional and Technical Services		\$20,747.00		\$20,747.00
400 Purchased Property Services				
430 Repairs and Maintenance Services	0.22	9.37		9.59
440 Rentals		1,811.46		1,811.46
Total Purchased Property Services	\$0.22	\$1,820.83		\$1,821.05
500 Other Purchased Services				
510 Student Transportation Services		1,006.90		1,006.90
530 Communications	77.96	3,365.56		3,443.52
580 Travel	939.95	395.16		2,828.43
Total Other Purchased Services	\$1,017.91	\$4,767.62		\$7,278.85
600 Supplies				
610 General Supplies	3,316.17	4,919.77		8,235.94
630 Food		2,166.55		2,166.55
Total Supplies	\$3,316.17	\$7,086.32		\$10,402.49
700 Property				
760 Equipment – Replacement	170.00	510.00		1,020.00
Total Property	\$170.00	\$510.00		\$1,020.00
800 Other Objects				
810 Dues and Fees	463.00	274.00		1,187.00
Total Other Objects	\$463.00	\$274.00		\$1,187.00
Total 2100 Support Services – Students	\$102,355.55	\$497,044.18	\$187,268.67	\$950,474.99

General Fund (10)

2120 Guidance Services

100 Personnel Services – Salaries

	<u>Elementary</u>	<u>Secondary</u>	<u>Federal</u>	<u>Total</u>
100 Personnel Services – Salaries	963.84	216,748.42	56,104.13	273,816.39
Total Personnel Services – Salaries	\$963.84	\$216,748.42	\$56,104.13	\$273,816.39

200 Personnel Services – Employee Benefits

210 Group Insurance – Contracted Provider	794.40	75,132.77	17,890.32	93,817.49
220 Social Security Contributions	73.73	16,180.37	4,291.97	20,546.07
230 PSERS Retirement Contributions	249.13	56,112.05	14,497.31	70,858.49
250 Unemployment Compensation	2.51	14.65		17.16
260 Workers' Compensation	3.13	800.67	702.29	1,506.09
290 Other Current Employee Benefits		1,548.00		1,548.00
Total Personnel Services – Employee Benefits	\$1,122.90	\$149,788.51	\$37,381.89	\$188,293.30

300 Purchased Professional and Technical Services

329 Professional Educational Services – Other		20,747.00		20,747.00
Total Purchased Professional and Technical Services		\$20,747.00		\$20,747.00

400 Purchased Property Services

430 Repairs and Maintenance Services	0.22	9.37		9.59
440 Rentals		1,811.46		1,811.46
Total Purchased Property Services	\$0.22	\$1,820.83		\$1,821.05

500 Other Purchased Services

510 Student Transportation Services		1,006.90		1,006.90
530 Communications		3,287.61		3,287.61
580 Travel	544.78			544.78
Total Other Purchased Services	\$544.78	\$4,294.51		\$4,839.29

600 Supplies

610 General Supplies	99.81	1,703.41		1,803.22
630 Food		2,166.55		2,166.55
Total Supplies	\$99.81	\$3,869.96		\$3,969.77

700 Property

760 Equipment – Replacement		340.00		340.00
Total Property		\$340.00		\$340.00

800 Other Objects

810 Dues and Fees	189.00			189.00
Total Other Objects	\$189.00			\$189.00

Total 2120 Guidance Services

	\$2,920.55	\$397,609.23	\$93,486.02	\$494,015.80
--	-------------------	---------------------	--------------------	---------------------

General Fund (10)

2140 Psychological Services

	<u>Elementary</u>	<u>Secondary</u>	<u>Federal</u>	<u>Total</u>
100 Personnel Services – Salaries				
100 Personnel Services – Salaries	55,828.43	55,828.43		111,656.86
Total Personnel Services – Salaries	\$55,828.43	\$55,828.43		\$111,656.86
200 Personnel Services – Employee Benefits				
210 Group Insurance – Contracted Provider	20,629.61	20,629.61		41,259.22
220 Social Security Contributions	4,107.80	4,107.79		8,215.59
230 PSERS Retirement Contributions	14,426.09	14,426.08		28,852.17
250 Unemployment Compensation	2.51	2.51		5.02
260 Workers' Compensation	307.07	307.06		614.13
Total Personnel Services – Employee Benefits	\$39,473.08	\$39,473.05		\$78,946.13
500 Other Purchased Services				
530 Communications	77.96	77.95		155.91
580 Travel	395.17	395.16		790.33
Total Other Purchased Services	\$473.13	\$473.11		\$946.24
600 Supplies				
610 General Supplies	3,216.36	3,216.36		6,432.72
Total Supplies	\$3,216.36	\$3,216.36		\$6,432.72
700 Property				
760 Equipment – Replacement	170.00	170.00		340.00
Total Property	\$170.00	\$170.00		\$340.00
800 Other Objects				
810 Dues and Fees	274.00	274.00		548.00
Total Other Objects	\$274.00	\$274.00		\$548.00
Total 2140 Psychological Services	\$99,435.00	\$99,434.95		\$198,869.95

General Fund (10)

2160 Social Work Services

Elementary Secondary Federal Total

100	<u>Personnel Services – Salaries</u>			
	100 Personnel Services – Salaries			160,649.68
			56,775.38	
	Total Personnel Services – Salaries		\$56,775.38	\$160,649.68
200	<u>Personnel Services – Employee Benefits</u>			
	210 Group Insurance – Contracted Provider		17,756.62	40,147.67
	220 Social Security Contributions		4,264.98	12,105.35
	230 PSERS Retirement Contributions		14,670.83	41,511.82
	250 Unemployment Compensation		2.51	7.85
	260 Workers' Compensation		312.33	883.55
	Total Personnel Services – Employee Benefits		\$37,007.27	\$94,656.24
500	<u>Other Purchased Services</u>			
	580 Travel			1,493.32
	Total Other Purchased Services			\$1,493.32
700	<u>Property</u>			
	760 Equipment – Replacement			340.00
	Total Property			\$340.00
800	<u>Other Objects</u>			
	810 Dues and Fees			450.00
	Total Other Objects			\$450.00
	Total 2160 Social Work Services		\$93,782.65	\$257,589.24

General Fund (10)

2200 Support Services – Instructional Staff

	<u>Elementary</u>	<u>Secondary</u>	<u>Federal</u>	<u>Total</u>
100 Personnel Services – Salaries				
100 Personnel Services – Salaries	270,247.07	244,094.53	99,766.45	614,108.05
Total Personnel Services – Salaries	\$270,247.07	\$244,094.53	\$99,766.45	\$614,108.05
200 Personnel Services – Employee Benefits				
210 Group Insurance – Contracted Provider	75,653.05	52,636.35		128,289.40
220 Social Security Contributions	21,033.07	19,056.07	7,632.20	47,721.34
230 PSERS Retirement Contributions	67,242.22	62,336.73	25,779.66	155,358.61
240 Tuition Reimbursement	18,866.00	41,932.60		60,798.60
250 Unemployment Compensation	100.91	62.96	2.39	166.26
260 Workers' Compensation	1,065.39	920.85	1,405.88	3,392.12
290 Other Current Employee Benefits	1,921.00	1,810.00		3,731.00
Total Personnel Services – Employee Benefits	\$185,881.64	\$178,755.56	\$34,820.13	\$399,457.33
300 Purchased Professional and Technical Services				
330 Other Professional Services	2,568.58	2,331.42		4,900.00
340 Technical Services	23,435.98	11,037.72		34,473.70
390 Other Purchased Professional and Technical Services	784.21	711.79		1,496.00
Total Purchased Professional and Technical Services	\$26,788.77	\$14,080.93		\$40,869.70
400 Purchased Property Services				
430 Repairs and Maintenance Services	9,658.38	8,996.81		18,655.19
440 Rentals	2,147.64	2,030.27		4,177.91
Total Purchased Property Services	\$11,806.02	\$11,027.08		\$22,833.10
500 Other Purchased Services				
530 Communications	4,503.28	4,505.09		9,008.37
580 Travel	16,944.37	18,682.20	13,053.06	48,679.63
592 Services Purchased From Another LEA Within the State	1,047.62	1,594.06		2,641.68
599 Other Miscellaneous Purchased Services	708.58			708.58
Total Other Purchased Services	\$23,203.85	\$24,781.35	\$13,053.06	\$61,038.26
600 Supplies				
610 General Supplies	33,677.72	24,502.40	201.00	58,381.12
630 Food	3,328.46	3,022.30		6,350.76
640 Books and Periodicals	75,685.36	58,810.02		134,495.38
Total Supplies	\$112,691.54	\$86,334.72	\$201.00	\$199,227.26
700 Property				
750 Equipment – Original and Additional	1,100.00	1,099.99	79,654.00	81,853.99
760 Equipment – Replacement	967.14	11,077.86		12,045.00
Total Property	\$2,067.14	\$12,177.85	\$79,654.00	\$93,898.99
800 Other Objects				
810 Dues and Fees	856.45	776.55		1,633.00
Total Other Objects	\$856.45	\$776.55		\$1,633.00
Total 2200 Support Services – Instructional Staff	\$633,542.48	\$572,028.57	\$227,494.64	\$1,433,065.69

General Fund (10)

2220 Technology Support Services

	<u>Elementary</u>	<u>Secondary</u>	<u>Federal</u>	<u>Total</u>
100 Personnel Services – Salaries				
100 Personnel Services – Salaries	80,003.46	67,460.51		147,463.97
Total Personnel Services – Salaries	\$80,003.46	\$67,460.51		\$147,463.97
200 Personnel Services – Employee Benefits				
210 Group Insurance – Contracted Provider	22,581.58	20,496.08		43,077.66
220 Social Security Contributions	5,995.34	5,055.75		11,051.09
230 PSERS Retirement Contributions	20,732.59	17,715.80		38,448.39
250 Unemployment Compensation	3.94	3.58		7.52
260 Workers' Compensation	439.90	371.07		810.97
Total Personnel Services – Employee Benefits	\$49,753.35	\$43,642.28		\$93,395.63
300 Purchased Professional and Technical Services				
330 Other Professional Services	2,568.58	2,331.42		4,900.00
340 Technical Services	12,160.50	11,037.72		23,198.22
390 Other Purchased Professional and Technical Services	784.21	711.79		1,496.00
Total Purchased Professional and Technical Services	\$15,513.29	\$14,080.93		\$29,594.22
400 Purchased Property Services				
430 Repairs and Maintenance Services	9,568.41	8,901.13		18,469.54
Total Purchased Property Services	\$9,568.41	\$8,901.13		\$18,469.54
500 Other Purchased Services				
530 Communications	1,158.02	1,160.62		2,318.64
580 Travel	2,039.15	1,850.85		3,890.00
Total Other Purchased Services	\$3,197.17	\$3,011.47		\$6,208.64
600 Supplies				
610 General Supplies	24,762.58	17,523.93	201.00	42,487.51
640 Books and Periodicals	38,521.50	31,288.70		69,810.20
Total Supplies	\$63,284.08	\$48,812.63	\$201.00	\$112,297.71
700 Property				
750 Equipment – Original and Additional			79,654.00	79,654.00
760 Equipment – Replacement	967.14	877.86		1,845.00
Total Property	\$967.14	\$877.86	\$79,654.00	\$81,499.00
800 Other Objects				
810 Dues and Fees	154.11	139.89		294.00
Total Other Objects	\$154.11	\$139.89		\$294.00
Total 2220 Technology Support Services	\$222,441.01	\$186,926.70	\$79,855.00	\$489,222.71

General Fund (10)

2250 School Library Services

	<u>Elementary</u>	<u>Secondary</u>	<u>Federal</u>	<u>Total</u>
100 Personnel Services – Salaries				
100 Personnel Services – Salaries	87,626.05	82,624.41		170,250.46
Total Personnel Services – Salaries	\$87,626.05	\$82,624.41		\$170,250.46
200 Personnel Services – Employee Benefits				
210 Group Insurance – Contracted Provider	34,309.04	14,527.34		48,836.38
220 Social Security Contributions	6,685.18	6,305.71		12,990.89
230 PSERS Retirement Contributions	21,222.86	20,061.82		41,284.68
250 Unemployment Compensation	9.85	5.21		15.06
260 Workers' Compensation	482.79	454.81		937.60
290 Other Current Employee Benefits	1,921.00	1,810.00		3,731.00
Total Personnel Services – Employee Benefits	\$64,630.72	\$43,164.89		\$107,795.61
400 Purchased Property Services				
430 Repairs and Maintenance Services		5.94		5.94
Total Purchased Property Services		\$5.94		\$5.94
600 Supplies				
610 General Supplies	5,486.19	3,751.60		9,237.79
640 Books and Periodicals	28,333.23	20,613.45		48,946.68
Total Supplies	\$33,819.42	\$24,365.05		\$58,184.47
700 Property				
760 Equipment – Replacement		10,200.00		10,200.00
Total Property		\$10,200.00		\$10,200.00
800 Other Objects				
810 Dues and Fees	70.00	50.00		120.00
Total Other Objects	\$70.00	\$50.00		\$120.00
Total 2250 School Library Services	\$186,146.19	\$160,410.29		\$346,556.48

General Fund (10)

	<u>Elementary</u>	<u>Secondary</u>	<u>Federal</u>	<u>Total</u>
2260 Instruction and Curriculum Development Services				
100 Personnel Services – Salaries				
100 Personnel Services – Salaries	89,614.57	84,112.66	97,398.05	271,125.28
Total Personnel Services – Salaries	\$89,614.57	\$84,112.66	\$97,398.05	\$271,125.28
200 Personnel Services – Employee Benefits				
210 Group Insurance – Contracted Provider	18,762.43	17,612.93		36,375.36
220 Social Security Contributions	7,358.48	6,937.67	7,450.95	21,747.10
230 PSERS Retirement Contributions	23,987.29	22,565.81	25,167.66	71,720.76
250 Unemployment Compensation	10.43	6.95		17.38
260 Workers' Compensation	71.11	40.53	1,392.79	1,504.43
Total Personnel Services – Employee Benefits	\$50,189.74	\$47,163.89	\$34,011.40	\$131,365.03
300 Purchased Professional and Technical Services				
340 Technical Services	11,275.48			11,275.48
Total Purchased Professional and Technical Services	\$11,275.48			\$11,275.48
400 Purchased Property Services				
430 Repairs and Maintenance Services	89.97	89.74		179.71
440 Rentals	2,147.64	2,030.27		4,177.91
Total Purchased Property Services	\$2,237.61	\$2,120.01		\$4,357.62
500 Other Purchased Services				
530 Communications	3,345.26	3,344.47		6,689.73
580 Travel	3,243.91	3,083.62		6,327.53
Total Other Purchased Services	\$6,589.17	\$6,428.09		\$13,017.26
600 Supplies				
610 General Supplies	3,103.87	2,968.16		6,072.03
630 Food	268.48	244.83		513.31
640 Books and Periodicals	8,830.63	6,907.87		15,738.50
Total Supplies	\$12,202.98	\$10,120.86		\$22,323.84
700 Property				
750 Equipment – Original and Additional	1,100.00	1,099.99		2,199.99
Total Property	\$1,100.00	\$1,099.99		\$2,199.99
800 Other Objects				
810 Dues and Fees	632.34	586.66		1,219.00
Total Other Objects	\$632.34	\$586.66		\$1,219.00
Total 2260 Instruction and Curriculum Development Services	\$173,841.89	\$151,632.16	\$131,409.45	\$456,883.50

General Fund (10)

	<u>Elementary</u>	<u>Secondary</u>	<u>Federal</u>	<u>Total</u>
2270 Instructional Staff Professional Development Services				
100 Personnel Services – Salaries				
100 Personnel Services – Salaries	13,002.99	9,896.95	2,368.40	25,268.34
Total Personnel Services – Salaries	\$13,002.99	\$9,896.95	\$2,368.40	\$25,268.34
200 Personnel Services – Employee Benefits				
220 Social Security Contributions	994.07	756.94	181.25	1,932.26
230 PSERS Retirement Contributions	1,299.48	1,993.30	612.00	3,904.78
240 Tuition Reimbursement	18,866.00	41,932.60		60,798.60
250 Unemployment Compensation	76.69	47.22	2.39	126.30
260 Workers' Compensation	71.59	54.44	13.09	139.12
Total Personnel Services – Employee Benefits	\$21,307.83	\$44,784.50	\$808.73	\$66,901.06
500 Other Purchased Services				
580 Travel	11,661.31	13,747.73	13,053.06	38,462.10
592 Services Purchased From Another LEA Within the State	1,047.62	1,594.06		2,641.68
599 Other Miscellaneous Purchased Services	708.58			708.58
Total Other Purchased Services	\$13,417.51	\$15,341.79	\$13,053.06	\$41,812.36
600 Supplies				
610 General Supplies	325.08	258.71		583.79
630 Food	3,059.98	2,777.47		5,837.45
Total Supplies	\$3,385.06	\$3,036.18		\$6,421.24
Total 2270 Instructional Staff Professional Development Services	\$51,113.39	\$73,059.42	\$16,230.19	\$140,403.00

General Fund (10)

2300 Support Services – Administration

	<u>Elementary</u>	<u>Secondary</u>	<u>Federal</u>	<u>Total</u>
100 Personnel Services – Salaries				
100 Personnel Services – Salaries	403,106.44	348,697.91		937,255.00
Total Personnel Services – Salaries	\$403,106.44	\$348,697.91		\$937,255.00
200 Personnel Services – Employee Benefits				
210 Group Insurance – Contracted Provider	86,054.29	60,024.77		183,976.91
220 Social Security Contributions	30,684.30	26,406.59		70,689.99
230 PSERS Retirement Contributions	105,544.89	90,908.06		244,875.58
250 Unemployment Compensation	16.00	14.72		35.60
260 Workers' Compensation	2,217.29	1,917.72		5,155.03
290 Other Current Employee Benefits	4,797.54			10,899.66
Total Personnel Services – Employee Benefits	\$229,314.31	\$179,271.86		\$515,632.77
300 Purchased Professional and Technical Services				
310 Official / Administrative Services				24,777.74
330 Other Professional Services				70,294.48
340 Technical Services				44,363.68
Total Purchased Professional and Technical Services				\$139,435.90
400 Purchased Property Services				
430 Repairs and Maintenance Services	343.52	318.41		665.82
440 Rentals	18,698.55	14,011.81		37,832.02
Total Purchased Property Services	\$19,042.07	\$14,330.22		\$38,497.84
500 Other Purchased Services				
520 Insurance – General				13,900.49
530 Communications	22,646.86	19,775.45		50,625.67
549 Other Advertising/Public Relations				10,590.45
550 Printing and Binding				24,125.00
580 Travel	1,213.16	3,390.38		14,102.03
Total Other Purchased Services	\$23,860.02	\$23,165.83		\$113,343.64
600 Supplies				
610 General Supplies	7,134.64	3,310.64		17,583.29
630 Food	1,204.96	355.60		2,975.48
640 Books and Periodicals				1,080.33
650 Supplies & Fees – Technology Related		4,260.97		4,260.97
Total Supplies	\$8,339.60	\$7,927.21		\$25,900.07
700 Property				
760 Equipment – Replacement		340.00		340.00
Total Property		\$340.00		\$340.00
800 Other Objects				
810 Dues and Fees	654.00	887.10		13,913.46
Total Other Objects	\$654.00	\$887.10		\$13,913.46
Total 2300 Support Services – Administration	\$684,316.44	\$574,620.13		\$1,784,318.68

General Fund (10)

2310 Board Services

	<u>Elementary</u>	<u>Secondary</u>	<u>Federal</u>	<u>Total</u>
--	-------------------	------------------	----------------	--------------

100 Personnel Services – Salaries

100 Personnel Services – Salaries				1,557.52
-----------------------------------	--	--	--	----------

Total Personnel Services – Salaries				\$1,557.52
--	--	--	--	-------------------

200 Personnel Services – Employee Benefits

210 Group Insurance – Contracted Provider				34.00
220 Social Security Contributions				118.81
230 PSERS Retirement Contributions				402.45
250 Unemployment Compensation				0.09
260 Workers' Compensation				8.57
290 Other Current Employee Benefits				6,102.12

Total Personnel Services – Employee Benefits				\$6,666.04
---	--	--	--	-------------------

300 Purchased Professional and Technical Services

330 Other Professional Services				16,041.35
---------------------------------	--	--	--	-----------

Total Purchased Professional and Technical Services				\$16,041.35
--	--	--	--	--------------------

400 Purchased Property Services

440 Rentals				2,560.83
-------------	--	--	--	----------

Total Purchased Property Services				\$2,560.83
--	--	--	--	-------------------

500 Other Purchased Services

520 Insurance – General				14,959.00
530 Communications				1,958.78
549 Other Advertising/Public Relations				10,590.45
550 Printing and Binding				24,125.00
580 Travel				3,113.68

Total Other Purchased Services				\$54,746.91
---------------------------------------	--	--	--	--------------------

600 Supplies

610 General Supplies				2,192.19
630 Food				414.22
640 Books and Periodicals				335.93

Total Supplies				\$2,942.34
-----------------------	--	--	--	-------------------

800 Other Objects

810 Dues and Fees				9,943.36
-------------------	--	--	--	----------

Total Other Objects				\$9,943.36
----------------------------	--	--	--	-------------------

Total 2310 Board Services				\$94,458.35
----------------------------------	--	--	--	--------------------

General Fund (10)

2330 Tax Assessment and Collection Services

Elementary

Secondary

Federal

Total

300 Purchased Professional and Technical Services

310 Official / Administrative Services

13,540.87

340 Technical Services

44,363.68

Total Purchased Professional and Technical Services

\$57,904.55

500 Other Purchased Services

520 Insurance – General

(1,058.51)

530 Communications

6,244.58

Total Other Purchased Services

\$5,186.07

Total 2330 Tax Assessment and Collection Services

\$63,090.62

LEA : 117596003 Northern Tioga SD

Printed 10/27/2016 4:24:33 PM

General Fund (10)

2350 Legal and Accounting Services

Elementary

Secondary

Federal

Total

300 Purchased Professional and Technical Services

330 Other Professional Services

54,253.13

Total Purchased Professional and Technical Services

\$54,253.13

Total 2350 Legal and Accounting Services

\$54,253.13

General Fund (10)

2360 Office of the Superintendent / Executive Director Services

	<u>Elementary</u>	<u>Secondary</u>	<u>Federal</u>	<u>Total</u>
100 Personnel Services – Salaries				
100 Personnel Services – Salaries				183,893.13
Total Personnel Services – Salaries				\$183,893.13
200 Personnel Services – Employee Benefits				
210 Group Insurance – Contracted Provider				37,863.85
220 Social Security Contributions				13,480.29
230 PSERS Retirement Contributions				48,020.18
250 Unemployment Compensation				4.79
260 Workers' Compensation				1,011.45
Total Personnel Services – Employee Benefits				\$100,380.56
400 Purchased Property Services				
430 Repairs and Maintenance Services				3.89
440 Rentals				2,560.83
Total Purchased Property Services				\$2,564.72
500 Other Purchased Services				
530 Communications	2,320.98	2,320.96		4,641.94
580 Travel				6,384.81
Total Other Purchased Services	\$2,320.98	\$2,320.96		\$11,026.75
600 Supplies				
610 General Supplies				4,945.82
630 Food				1,000.70
640 Books and Periodicals				744.40
Total Supplies				\$6,690.92
800 Other Objects				
810 Dues and Fees				2,429.00
Total Other Objects				\$2,429.00
Total 2360 Office of the Superintendent / Executive Director Services	\$2,320.98	\$2,320.96		\$306,985.08

General Fund (10)

2380 Office of the Principal Services

	<u>Elementary</u>	<u>Secondary</u>	<u>Federal</u>	<u>Total</u>
100 Personnel Services – Salaries				
100 Personnel Services – Salaries	403,106.44	348,697.91		751,804.35
Total Personnel Services – Salaries	\$403,106.44	\$348,697.91		\$751,804.35
200 Personnel Services – Employee Benefits				
210 Group Insurance – Contracted Provider	86,054.29	60,024.77		146,079.06
220 Social Security Contributions	30,684.30	26,406.59		57,090.89
230 PSERS Retirement Contributions	105,544.89	90,908.06		196,452.95
250 Unemployment Compensation	16.00	14.72		30.72
260 Workers' Compensation	2,217.29	1,917.72		4,135.01
290 Other Current Employee Benefits	4,797.54			4,797.54
Total Personnel Services – Employee Benefits	\$229,314.31	\$179,271.86		\$408,586.17
400 Purchased Property Services				
430 Repairs and Maintenance Services	343.52	318.41		661.93
440 Rentals	18,698.55	14,011.81		32,710.36
Total Purchased Property Services	\$19,042.07	\$14,330.22		\$33,372.29
500 Other Purchased Services				
530 Communications	20,325.88	17,454.49		37,780.37
580 Travel	1,213.16	3,390.38		4,603.54
Total Other Purchased Services	\$21,539.04	\$20,844.87		\$42,383.91
600 Supplies				
610 General Supplies	7,134.64	3,310.64		10,445.28
630 Food	1,204.96	355.60		1,560.56
650 Supplies & Fees – Technology Related		4,260.97		4,260.97
Total Supplies	\$8,339.60	\$7,927.21		\$16,266.81
700 Property				
760 Equipment – Replacement		340.00		340.00
Total Property		\$340.00		\$340.00
800 Other Objects				
810 Dues and Fees	654.00	887.10		1,541.10
Total Other Objects	\$654.00	\$887.10		\$1,541.10
Total 2380 Office of the Principal Services	\$681,995.46	\$572,299.17		\$1,254,294.63

General Fund (10)

2390 Other Administration Services

Elementary

Secondary

Federal

Total

300 Purchased Professional and Technical Services

310 Official / Administrative Services

11,236.87

Total Purchased Professional and Technical Services

\$11,236.87

Total 2390 Other Administration Services

\$11,236.87

General Fund (10)

2400 Support Services – Pupil Health

Elementary

Secondary

Federal

Total

100 Personnel Services – Salaries

100 Personnel Services – Salaries

177,910.61

Total Personnel Services – Salaries

\$177,910.61

200 Personnel Services – Employee Benefits

210 Group Insurance – Contracted Provider

70,005.82

220 Social Security Contributions

13,404.36

230 PSERS Retirement Contributions

45,859.98

250 Unemployment Compensation

10.59

260 Workers' Compensation

979.74

290 Other Current Employee Benefits

200.00

Total Personnel Services – Employee Benefits

\$130,460.49

300 Purchased Professional and Technical Services

330 Other Professional Services

3,907.82

Total Purchased Professional and Technical Services

\$3,907.82

400 Purchased Property Services

430 Repairs and Maintenance Services

240.00

Total Purchased Property Services

\$240.00

500 Other Purchased Services

580 Travel

60.48

Total Other Purchased Services

\$60.48

600 Supplies

610 General Supplies

10,303.41

Total Supplies

\$10,303.41

Total 2400 Support Services – Pupil Health

\$322,882.81

General Fund (10)

2500 Support Services – Business

Elementary Secondary Federal Total

100 Personnel Services – Salaries

100 Personnel Services – Salaries 203,745.49

Total Personnel Services – Salaries \$203,745.49

200 Personnel Services – Employee Benefits

210 Group Insurance – Contracted Provider 53,145.08

220 Social Security Contributions 15,546.51

230 PSERS Retirement Contributions 52,667.40

250 Unemployment Compensation 13.30

260 Workers' Compensation 2,121.37

Total Personnel Services – Employee Benefits \$123,493.66

400 Purchased Property Services

430 Repairs and Maintenance Services 21.12

440 Rentals 2,424.64

Total Purchased Property Services \$2,445.76

500 Other Purchased Services

520 Insurance – General 524.00

530 Communications 6,772.85

580 Travel 1,978.21

Total Other Purchased Services \$9,275.06

600 Supplies

610 General Supplies 6,057.70

640 Books and Periodicals 55.92

Total Supplies \$6,113.62

800 Other Objects

810 Dues and Fees 457.00

Total Other Objects \$457.00

Total 2500 Support Services – Business \$345,530.59

General Fund (10)

2510 Fiscal Services

Elementary

Secondary

Federal

Total

100 Personnel Services – Salaries

100 Personnel Services – Salaries

137,640.85

Total Personnel Services – Salaries

\$137,640.85

200 Personnel Services – Employee Benefits

210 Group Insurance – Contracted Provider

36,032.69

220 Social Security Contributions

10,514.70

230 PSERS Retirement Contributions

36,065.70

250 Unemployment Compensation

5.02

260 Workers' Compensation

757.04

Total Personnel Services – Employee Benefits

\$83,375.15

500 Other Purchased Services

520 Insurance – General

524.00

530 Communications

655.83

580 Travel

1,978.21

Total Other Purchased Services

\$3,158.04

600 Supplies

610 General Supplies

1,656.89

640 Books and Periodicals

55.92

Total Supplies

\$1,712.81

800 Other Objects

810 Dues and Fees

457.00

Total Other Objects

\$457.00

Total 2510 Fiscal Services

\$226,343.85

General Fund (10)

2511 Supervision of Fiscal Services - Head of Component

	<u>Elementary</u>	<u>Secondary</u>	<u>Federal</u>	<u>Total</u>
100 Personnel Services – Salaries				
100 Personnel Services – Salaries				105,383.97
Total Personnel Services – Salaries				\$105,383.97
200 Personnel Services – Employee Benefits				
210 Group Insurance – Contracted Provider				17,927.53
220 Social Security Contributions				8,056.79
230 PSERS Retirement Contributions				27,572.77
250 Unemployment Compensation				2.51
260 Workers' Compensation				579.62
Total Personnel Services – Employee Benefits				\$54,139.22
500 Other Purchased Services				
520 Insurance – General				524.00
530 Communications				655.83
580 Travel				1,978.21
Total Other Purchased Services				\$3,158.04
600 Supplies				
610 General Supplies				272.37
640 Books and Periodicals				55.92
Total Supplies				\$328.29
800 Other Objects				
810 Dues and Fees				457.00
Total Other Objects				\$457.00
Total 2511 Supervision of Fiscal Services - Head of Component				\$163,466.52

General Fund (10)

2514 Payroll Services

Elementary

Secondary

Federal

Total

100 Personnel Services – Salaries

100 Personnel Services – Salaries

32,256.88

Total Personnel Services – Salaries

\$32,256.88

200 Personnel Services – Employee Benefits

210 Group Insurance – Contracted Provider

18,105.16

220 Social Security Contributions

2,457.91

230 PSERS Retirement Contributions

8,492.93

250 Unemployment Compensation

2.51

260 Workers' Compensation

177.42

Total Personnel Services – Employee Benefits

\$29,235.93

600 Supplies

610 General Supplies

1,384.52

Total Supplies

\$1,384.52

Total 2514 Payroll Services

\$62,877.33

General Fund (10)

2590 Other Support Services – Business

Elementary

Secondary

Federal

Total

100 Personnel Services – Salaries

100 Personnel Services – Salaries

66,104.64

Total Personnel Services – Salaries

\$66,104.64

200 Personnel Services – Employee Benefits

210 Group Insurance – Contracted Provider

17,112.39

220 Social Security Contributions

5,031.81

230 PSERS Retirement Contributions

16,601.70

250 Unemployment Compensation

8.28

260 Workers' Compensation

1,364.33

Total Personnel Services – Employee Benefits

\$40,118.51

400 Purchased Property Services

430 Repairs and Maintenance Services

21.12

440 Rentals

2,424.64

Total Purchased Property Services

\$2,445.76

500 Other Purchased Services

530 Communications

6,117.02

Total Other Purchased Services

\$6,117.02

600 Supplies

610 General Supplies

4,400.81

Total Supplies

\$4,400.81

Total 2590 Other Support Services – Business

\$119,186.74

General Fund (10)

2620 Operation of Buildings Services

100 Personnel Services – Salaries

	<u>Elementary</u>	<u>Secondary</u>	<u>Federal</u>	<u>Total</u>
100 Personnel Services – Salaries				536,315.96
Total Personnel Services – Salaries				\$536,315.96
200 Personnel Services – Employee Benefits				
210 Group Insurance – Contracted Provider				219,144.06
220 Social Security Contributions				40,585.24
230 PSERS Retirement Contributions				143,257.96
250 Unemployment Compensation				45.95
260 Workers' Compensation				2,948.89
Total Personnel Services – Employee Benefits				\$405,982.10
400 Purchased Property Services				
410 Cleaning Services				31,893.76
430 Repairs and Maintenance Services				8,845.82
Total Purchased Property Services				\$40,739.58
500 Other Purchased Services				
523 General Property and Liability Insurance				136,192.00
Total Other Purchased Services				\$136,192.00
600 Supplies				
610 General Supplies	26,381.59	17,736.98		44,118.57
Total Supplies	\$26,381.59	\$17,736.98		\$44,118.57
700 Property				
750 Equipment – Original and Additional				3,982.56
760 Equipment – Replacement				35,532.41
Total Property				\$39,514.97
Total 2620 Operation of Buildings Services	\$26,381.59	\$17,736.98		\$1,202,863.18

General Fund (10)

2660 Safety and Security Services

Elementary

Secondary

Federal

Total

300 Purchased Professional and Technical Services

350 Security / Safety Services

1,500.00

Total Purchased Professional and Technical Services

\$1,500.00

Total 2660 Safety and Security Services

\$1,500.00

General Fund (10)

	<u>Elementary</u>	<u>Secondary</u>	<u>Federal</u>	<u>Total</u>
2700 Student Transportation Services				
300 <u>Purchased Professional and Technical Services</u>				
340 Technical Services				2,615.50
Total Purchased Professional and Technical Services				\$2,615.50
400 <u>Purchased Property Services</u>				
430 Repairs and Maintenance Services				1,603.15
Total Purchased Property Services				\$1,603.15
500 <u>Other Purchased Services</u>				
513 Contracted Carriers				1,883,093.33
516 Student Transportation Services From the IU				28,232.89
530 Communications				3,913.00
Total Other Purchased Services				\$1,915,239.22
600 <u>Supplies</u>				
610 General Supplies				1,655.70
640 Books and Periodicals				2,090.00
Total Supplies				\$3,745.70
700 <u>Property</u>				
750 Equipment – Original and Additional				883.00
Total Property				\$883.00
Total 2700 Student Transportation Services				\$1,924,086.57

LEA : 117596003 Northern Tioga SD

Printed 10/27/2016 4:24:33 PM

General Fund (10)

	<u>Elementary</u>	<u>Secondary</u>	<u>Federal</u>	<u>Total</u>
2750 Nonpublic Transportation				
500 <u>Other Purchased Services</u>				
513 Contracted Carriers				160,501.25
Total Other Purchased Services				\$160,501.25
Total 2750 Nonpublic Transportation				\$160,501.25

General Fund (10)

2790 Other Student Transportation Services

Elementary

Secondary

Federal

Total

300 Purchased Professional and Technical Services

340 Technical Services

2,615.50

Total Purchased Professional and Technical Services

\$2,615.50

400 Purchased Property Services

430 Repairs and Maintenance Services

1,603.15

Total Purchased Property Services

\$1,603.15

500 Other Purchased Services

513 Contracted Carriers

1,722,592.08

516 Student Transportation Services From the IU

28,232.89

530 Communications

3,913.00

Total Other Purchased Services

\$1,754,737.97

600 Supplies

610 General Supplies

1,655.70

640 Books and Periodicals

2,090.00

Total Supplies

\$3,745.70

700 Property

750 Equipment – Original and Additional

883.00

Total Property

\$883.00

Total 2790 Other Student Transportation Services

\$1,763,585.32

General Fund (10)

2800 Support Services – Central

	<u>Elementary</u>	<u>Secondary</u>	<u>Federal</u>	<u>Total</u>
100 Personnel Services – Salaries				
100 Personnel Services – Salaries			5,704.49	5,804.49
Total Personnel Services – Salaries			\$5,704.49	\$5,804.49
200 Personnel Services – Employee Benefits				
210 Group Insurance – Contracted Provider			1,709.30	1,709.30
220 Social Security Contributions			477.73	485.38
230 PSERS Retirement Contributions			1,474.05	1,499.89
240 Tuition Reimbursement				2,724.00
260 Workers' Compensation			31.36	31.91
Total Personnel Services – Employee Benefits			\$3,692.44	\$6,450.48
300 Purchased Professional and Technical Services				
340 Technical Services				822.27
Total Purchased Professional and Technical Services				\$822.27
400 Purchased Property Services				
440 Rentals				34,072.00
Total Purchased Property Services				\$34,072.00
500 Other Purchased Services				
580 Travel				19,094.04
591 Services Purchased Locally				765.30
Total Other Purchased Services				\$19,859.34
600 Supplies				
610 General Supplies				14.00
Total Supplies				\$14.00
Total 2800 Support Services – Central			\$9,396.93	\$67,022.58

General Fund (10)

2830 Staff Services

Elementary

Secondary

Federal

Total

100 Personnel Services – Salaries

100 Personnel Services – Salaries

100.00

Total Personnel Services – Salaries

\$100.00

200 Personnel Services – Employee Benefits

220 Social Security Contributions

7.65

230 PSERS Retirement Contributions

25.84

240 Tuition Reimbursement

2,724.00

260 Workers' Compensation

0.55

Total Personnel Services – Employee Benefits

\$2,758.04

500 Other Purchased Services

580 Travel

19,094.04

591 Services Purchased Locally

765.30

Total Other Purchased Services

\$19,859.34

600 Supplies

610 General Supplies

14.00

Total Supplies

\$14.00

Total 2830 Staff Services

\$22,731.38

General Fund (10)

2834 Staff Development Services – Non-Instructional, Certified Staff Only

Elementary

Secondary

Federal

Total

100 Personnel Services – Salaries				
100 Personnel Services – Salaries				100.00
Total Personnel Services – Salaries				\$100.00
200 Personnel Services – Employee Benefits				
220 Social Security Contributions				7.65
230 PSERS Retirement Contributions				25.84
240 Tuition Reimbursement				2,724.00
260 Workers' Compensation				0.55
Total Personnel Services – Employee Benefits				\$2,758.04
500 Other Purchased Services				
580 Travel				16,122.07
Total Other Purchased Services				\$16,122.07
600 Supplies				
610 General Supplies				14.00
Total Supplies				\$14.00
Total 2834 Staff Development Services – Non-Instructional, Certified Staff Only				\$18,994.11

General Fund (10)

2836 Staff Development Services – Non-Instructional, Non-Certified Staff Only

Elementary

Secondary

Federal

Total

500 Other Purchased Services

580 Travel 2,971.97

591 Services Purchased Locally 765.30

Total Other Purchased Services \$3,737.27

Total 2836 Staff Development Services – Non-Instructional, Non-Certified Staff Only \$3,737.27

General Fund (10)

	<u>Elementary</u>	<u>Secondary</u>	<u>Federal</u>	<u>Total</u>
2840 Data Processing Services				
300 <u>Purchased Professional and Technical Services</u>				
340 Technical Services				822.27
Total Purchased Professional and Technical Services				\$822.27
400 <u>Purchased Property Services</u>				
440 Rentals				34,072.00
Total Purchased Property Services				\$34,072.00
Total 2840 Data Processing Services				\$34,894.27

General Fund (10)

2850 State and Federal Agency Liaison Services

Elementary

Secondary

Federal

Total

100 Personnel Services – Salaries

100 Personnel Services – Salaries

5,704.49

5,704.49

Total Personnel Services – Salaries

\$5,704.49

\$5,704.49

200 Personnel Services – Employee Benefits

210 Group Insurance – Contracted Provider

1,709.30

1,709.30

220 Social Security Contributions

477.73

477.73

230 PSERS Retirement Contributions

1,474.05

1,474.05

260 Workers' Compensation

31.36

31.36

Total Personnel Services – Employee Benefits

\$3,692.44

\$3,692.44

Total 2850 State and Federal Agency Liaison Services

\$9,396.93

\$9,396.93

General Fund (10)

3000 Operation of Non-Instructional Services	<u>Total</u>
100 Personnel Services – Salaries	
100 Personnel Services – Salaries	278,860.66
Total Personnel Services – Salaries	\$278,860.66
200 Personnel Services – Employee Benefits	
220 Social Security Contributions	21,135.20
230 PSERS Retirement Contributions	42,218.04
250 Unemployment Compensation	1,184.08
260 Workers’ Compensation	1,533.43
Total Personnel Services – Employee Benefits	\$66,070.75
300 Purchased Professional and Technical Services	
330 Other Professional Services	17,500.00
390 Other Purchased Professional and Technical Services	46,075.00
Total Purchased Professional and Technical Services	\$63,575.00
400 Purchased Property Services	
430 Repairs and Maintenance Services	3,601.75
Total Purchased Property Services	\$3,601.75
500 Other Purchased Services	
510 Student Transportation Services	96,240.65
530 Communications	1,546.75
580 Travel	7,311.67
Total Other Purchased Services	\$105,099.07
600 Supplies	
610 General Supplies	88,196.78
630 Food	145.00
Total Supplies	\$88,341.78
700 Property	
760 Equipment – Replacement	9,633.77
Total Property	\$9,633.77
800 Other Objects	
810 Dues and Fees	1,202.00
Total Other Objects	\$1,202.00
Total 3000 Operation of Non-Instructional Services	\$616,384.78

General Fund (10)

3200 Student Activities

Elementary

Secondary

Federal

Total

100 Personnel Services – Salaries

100 Personnel Services – Salaries

271,571.66

Total Personnel Services – Salaries

\$271,571.66

200 Personnel Services – Employee Benefits

220 Social Security Contributions

20,577.12

230 PSERS Retirement Contributions

40,382.89

250 Unemployment Compensation

1,157.79

260 Workers' Compensation

1,493.59

Total Personnel Services – Employee Benefits

\$63,611.39

300 Purchased Professional and Technical Services

330 Other Professional Services

17,500.00

390 Other Purchased Professional and Technical Services

46,075.00

Total Purchased Professional and Technical Services

\$63,575.00

400 Purchased Property Services

430 Repairs and Maintenance Services

3,601.75

Total Purchased Property Services

\$3,601.75

500 Other Purchased Services

510 Student Transportation Services

96,240.65

580 Travel

7,311.67

Total Other Purchased Services

\$103,552.32

600 Supplies

610 General Supplies

77,462.98

Total Supplies

\$77,462.98

700 Property

760 Equipment – Replacement

9,633.77

Total Property

\$9,633.77

800 Other Objects

810 Dues and Fees

1,202.00

Total Other Objects

\$1,202.00

Total 3200 Student Activities

\$594,210.87

General Fund (10)

3300 Community Services

<u>Elementary</u>	<u>Secondary</u>	<u>Federal</u>	<u>Total</u>
-------------------	------------------	----------------	--------------

100 Personnel Services – Salaries

100 Personnel Services – Salaries			7,289.00
-----------------------------------	--	--	----------

Total Personnel Services – Salaries			\$7,289.00
--	--	--	-------------------

200 Personnel Services – Employee Benefits

220 Social Security Contributions			558.08
-----------------------------------	--	--	--------

230 PSERS Retirement Contributions			1,835.15
------------------------------------	--	--	----------

250 Unemployment Compensation			26.29
-------------------------------	--	--	-------

260 Workers' Compensation			39.84
---------------------------	--	--	-------

Total Personnel Services – Employee Benefits			\$2,459.36
---	--	--	-------------------

500 Other Purchased Services

530 Communications			1,546.75
--------------------	--	--	----------

Total Other Purchased Services			\$1,546.75
---------------------------------------	--	--	-------------------

600 Supplies

610 General Supplies		6,281.51	10,733.80
----------------------	--	----------	-----------

630 Food			145.00
----------	--	--	--------

Total Supplies		\$6,281.51	\$10,878.80
-----------------------	--	-------------------	--------------------

Total 3300 Community Services		\$6,281.51	\$22,173.91
--------------------------------------	--	-------------------	--------------------

General Fund (10)

4000 Facilities Acquisition, Construction and Improvement Services

Total

300 Purchased Professional and Technical Services

330 Other Professional Services

65,703.34

Total Purchased Professional and Technical Services

\$65,703.34

400 Purchased Property Services

430 Repairs and Maintenance Services

2,100.00

Total Purchased Property Services

\$2,100.00

700 Property

750 Equipment – Original and Additional

23,881.91

760 Equipment – Replacement

36,053.45

Total Property

\$59,935.36

Total 4000 Facilities Acquisition, Construction and Improvement Services

\$127,738.70

General Fund (10)

	<u>Elementary</u>	<u>Secondary</u>	<u>Federal</u>	<u>Total</u>
4200 Existing Site Improvement Services				
300 <u>Purchased Professional and Technical Services</u>				
330 Other Professional Services				2,652.64
Total Purchased Professional and Technical Services				\$2,652.64
400 <u>Purchased Property Services</u>				
430 Repairs and Maintenance Services				2,100.00
Total Purchased Property Services				\$2,100.00
700 <u>Property</u>				
760 Equipment – Replacement				36,053.45
Total Property				\$36,053.45
Total 4200 Existing Site Improvement Services				\$40,806.09

General Fund (10)

	<u>Elementary</u>	<u>Secondary</u>	<u>Federal</u>	<u>Total</u>
4500 Building Acquisition and Construction Services – Original and Additional				
300 <u>Purchased Professional and Technical Services</u>				
330 Other Professional Services				40,151.00
Total Purchased Professional and Technical Services				\$40,151.00
Total 4500 Building Acquisition and Construction Services – Original and Additional				\$40,151.00

General Fund (10)

	<u>Elementary</u>	<u>Secondary</u>	<u>Federal</u>	<u>Total</u>
4600 Existing Building Improvement Services				
300 <u>Purchased Professional and Technical Services</u>				
330 Other Professional Services				22,899.70
Total Purchased Professional and Technical Services				\$22,899.70
700 <u>Property</u>				
750 Equipment – Original and Additional				23,881.91
Total Property				\$23,881.91
Total 4600 Existing Building Improvement Services				\$46,781.61

General Fund (10)

5000 Other Expenditures and Financing Uses

Total

800 Other Objects

830 Interest	200,549.00
880 Refunds of Prior Years' Receipts	5.96

Total Other Objects	\$200,554.96
----------------------------	---------------------

900 Other Uses of Funds

910 Redemption of Principal	2,225,000.00
930 Fund Transfers	222.00
932 Capital Reserve Fund Transfers Applicable To Fund 32	1,209,188.00

Total Other Uses of Funds	\$3,434,410.00
----------------------------------	-----------------------

Total 5000 Other Expenditures and Financing Uses	\$3,634,964.96
---	-----------------------

LEA : 117596003 Northern Tioga SD

Printed 10/27/2016 4:24:47 PM

General Fund (10)

5100 Debt Service / Other Expenditures and Financing Uses	<u>Elementary</u>	<u>Secondary</u>	<u>Federal</u>	<u>Total</u>
800 <u>Other Objects</u>				
830 Interest				200,549.00
880 Refunds of Prior Years' Receipts				5.96
Total Other Objects				\$200,554.96
900 <u>Other Uses of Funds</u>				
910 Redemption of Principal				2,225,000.00
Total Other Uses of Funds				\$2,225,000.00
Total 5100 Debt Service / Other Expenditures and Financing Uses				\$2,425,554.96

LEA : 117596003 Northern Tioga SD

Printed 10/27/2016 4:24:47 PM

General Fund (10)

	<u>Elementary</u>	<u>Secondary</u>	<u>Federal</u>	<u>Total</u>
5110 Debt Service				
800 Other Objects				
830 Interest				200,549.00
Total Other Objects				\$200,549.00
900 Other Uses of Funds				
910 Redemption of Principal				2,225,000.00
Total Other Uses of Funds				\$2,225,000.00
Total 5110 Debt Service				\$2,425,549.00

LEA : 117596003 Northern Tioga SD

Printed 10/27/2016 4:24:47 PM

General Fund (10)

	<u>Elementary</u>	<u>Secondary</u>	<u>Federal</u>	<u>Total</u>
5130 Refund of Prior Year Revenues / Receipts				
800 <u>Other Objects</u>				
880 Refunds of Prior Years' Receipts				5.96
Total Other Objects				\$5.96
Total 5130 Refund of Prior Year Revenues / Receipts				\$5.96

LEA : 117596003 Northern Tioga SD

Printed 10/27/2016 4:24:47 PM

General Fund (10)

5200 Interfund Transfers – Out

Elementary

Secondary

Federal

Total

900 Other Uses of Funds

930 Fund Transfers

222.00

932 Capital Reserve Fund Transfers Applicable To Fund 32

1,209,188.00

Total Other Uses of Funds

\$1,209,410.00

Total 5200 Interfund Transfers – Out

\$1,209,410.00

LEA : 117596003 Northern Tioga SD

Printed 10/27/2016 4:24:47 PM

General Fund (10)

5230 Capital Projects Fund Transfers

Elementary

Secondary

Federal

Total

900 Other Uses of Funds

932 Capital Reserve Fund Transfers Applicable To Fund 32

1,209,188.00

Total Other Uses of Funds

\$1,209,188.00

Total 5230 Capital Projects Fund Transfers

\$1,209,188.00

LEA : 117596003 Northern Tioga SD

Printed 10/27/2016 4:24:47 PM

General Fund (10)

	<u>Elementary</u>	<u>Secondary</u>	<u>Federal</u>	<u>Total</u>
5250 Enterprise Fund Transfers				
900 Other Uses of Funds				
930 Fund Transfers				222.00
Total Other Uses of Funds				\$222.00
Total 5250 Enterprise Fund Transfers				\$222.00

LEA : 117596003 Northern Tioga SD

Printed 10/27/2016 4:24:38 PM

Capital Reserve Fund - § 1431 (32)

2000 Support Services

300 Purchased Professional and Technical Services

310 Official / Administrative Services

Total Purchased Professional and Technical Services

Total 2000 Support Services

Total

1,034.71

\$1,034.71

\$1,034.71

LEA : 117596003 Northern Tioga SD

Printed 10/27/2016 4:24:38 PM

Capital Reserve Fund - § 1431 (32)

2300 Support Services – Administration

Elementary

Secondary

Federal

Total

300 Purchased Professional and Technical Services

310 Official / Administrative Services

1,034.71

Total Purchased Professional and Technical Services

\$1,034.71

Total 2300 Support Services – Administration

\$1,034.71

LEA : 117596003 Northern Tioga SD

Printed 10/27/2016 4:24:38 PM

Capital Reserve Fund - § 1431 (32)

2390 Other Administration Services

Elementary

Secondary

Federal

Total

300 Purchased Professional and Technical Services

310 Official / Administrative Services

1,034.71

Total Purchased Professional and Technical Services

\$1,034.71

Total 2390 Other Administration Services

\$1,034.71

Capital Reserve Fund - § 1431 (32)

4000 Facilities Acquisition, Construction and Improvement Services

Total

300 Purchased Professional and Technical Services

330 Other Professional Services

911,218.66

Total Purchased Professional and Technical Services

\$911,218.66

Total 4000 Facilities Acquisition, Construction and Improvement Services

\$911,218.66

LEA : 117596003 Northern Tioga SD

Printed 10/27/2016 4:24:46 PM

Capital Reserve Fund - § 1431 (32)

4400 Architecture and Engineering Services / Educational Specifications – Improvements

Elementary

Secondary

Federal

Total

300 Purchased Professional and Technical Services

330 Other Professional Services

32,069.22

Total Purchased Professional and Technical Services

\$32,069.22

Total 4400 Architecture and Engineering Services / Educational Specifications – Improvements

\$32,069.22

LEA : 117596003 Northern Tioga SD

Printed 10/27/2016 4:24:46 PM

Capital Reserve Fund - § 1431 (32)

4600 Existing Building Improvement Services

Elementary

Secondary

Federal

Total

300 Purchased Professional and Technical Services

330 Other Professional Services

879,149.44

Total Purchased Professional and Technical Services

\$879,149.44

Total 4600 Existing Building Improvement Services

\$879,149.44

LEA : 117596003 Northern Tioga SD

Printed 10/27/2016 4:24:40 PM

Debt Service Fund (40)

2000 Support Services

300 Purchased Professional and Technical Services

310 Official / Administrative Services

Total Purchased Professional and Technical Services

Total 2000 Support Services

Total

61,602.56

\$61,602.56

\$61,602.56

LEA : 117596003 Northern Tioga SD

Printed 10/27/2016 4:24:40 PM

Debt Service Fund (40)

2300 Support Services – Administration

Elementary

Secondary

Federal

Total

300 Purchased Professional and Technical Services

310 Official / Administrative Services

61,602.56

Total Purchased Professional and Technical Services

\$61,602.56

Total 2300 Support Services – Administration

\$61,602.56

LEA : 117596003 Northern Tioga SD

Printed 10/27/2016 4:24:40 PM

Debt Service Fund (40)

2390 Other Administration Services

Elementary

Secondary

Federal

Total

300 Purchased Professional and Technical Services

310 Official / Administrative Services

61,602.56

Total Purchased Professional and Technical Services

\$61,602.56

Total 2390 Other Administration Services

\$61,602.56

Debt Service Fund (40)

5000 Other Expenditures and Financing Uses

Total

800 Other Objects

830 Interest

2,471.06

Total Other Objects

\$2,471.06

900 Other Uses of Funds

910 Redemption of Principal

5,255,545.63

990 Miscellaneous Other Uses of Funds

52,900.00

Total Other Uses of Funds

\$5,308,445.63

Total 5000 Other Expenditures and Financing Uses

\$5,310,916.69

Debt Service Fund (40)

5100 Debt Service / Other Expenditures and Financing Uses

Elementary

Secondary

Federal

Total

800 Other Objects

830 Interest 2,471.06

Total Other Objects

\$2,471.06

900 Other Uses of Funds

910 Redemption of Principal 5,255,545.63

990 Miscellaneous Other Uses of Funds 52,900.00

Total Other Uses of Funds

\$5,308,445.63

Total 5100 Debt Service / Other Expenditures and Financing Uses

\$5,310,916.69

LEA : 117596003 Northern Tioga SD

Printed 10/27/2016 4:24:48 PM

Debt Service Fund (40)

5110 Debt Service

800 Other Objects

830 Interest

Elementary

Secondary

Federal

Total

Total Other Objects

2,471.06

\$2,471.06

Total 5110 Debt Service

\$2,471.06

LEA : 117596003 Northern Tioga SD

Printed 10/27/2016 4:24:48 PM

Debt Service Fund (40)

5120 Debt Service – Refunded Bonds

Elementary

Secondary

Federal

Total

900 Other Uses of Funds

910 Redemption of Principal

5,255,545.63

Total Other Uses of Funds

\$5,255,545.63

Total 5120 Debt Service – Refunded Bonds

\$5,255,545.63

LEA : 117596003 Northern Tioga SD

Printed 10/27/2016 4:24:48 PM

Debt Service Fund (40)

5150 Bond Discounts

Elementary

Secondary

Federal

Total

900 Other Uses of Funds

990 Miscellaneous Other Uses of Funds

52,900.00

Total Other Uses of Funds

\$52,900.00

Total 5150 Bond Discounts

\$52,900.00

	<u>General Fund(10)</u>	<u>Public Purpose Trust(27)</u>	<u>Other Compt Approved (28)</u>	<u>Athletic / Activity(29)</u>	<u>Capital Reserve (690. 1850)(31)</u>
1000 Instruction					
1100 Regular Programs - Elementary / Secondary	13,033,985.21				
1200 Special Programs - Elementary / Secondary	4,334,665.83				
1300 Vocational Education	1,282,214.80				
1400 Other Instructional Programs - Elementary / Secondary	117,747.17				
1800 Pre-Kindergarten	322,448.21				
Total Instruction	\$19,091,061.22				
2000 Support Services					
2100 Support Services - Students	950,474.99				
2200 Support Services - Instructional Staff	1,433,065.69				
2300 Support Services - Administration	1,784,318.68				
2400 Support Services - Pupil Health	322,882.81				
2500 Support Services - Business	345,530.59				
2600 Operation and Maintenance of Plant Services	2,262,095.68				
2700 Student Transportation Services	1,924,086.57				
2800 Support Services - Central	67,022.58				
Total Support Services	\$9,089,477.59				
3000 Operation of Non-Instructional Services					
3200 Student Activities	594,210.87				
3300 Community Services	22,173.91				
Total Operation of Non-Instructional Services	\$616,384.78				
4000 Facilities Acquisition, Construction and Improvement Services					
4200 Existing Site Improvement Services	40,806.09				
4400 Architecture and Engineering Services / Educational Specifications - Improvements					
4500 Building Acquisition and Construction Services - Original and Additional	40,151.00				
4600 Existing Building Improvement Services	46,781.61				
Total Facilities Acquisition, Construction and Improvement Services	\$127,738.70				
5000 Other Expenditures and Financing Uses					
5100 Debt Service / Other Expenditures and Financing Uses	2,425,554.96				
5200 Interfund Transfers - Out	1,209,410.00				
Total Other Expenditures and Financing Uses	\$3,634,964.96				
TOTAL ACTUAL EXPENDITURES & OTHER FINANCING USES	\$32,559,627.25				

LEA : 117596003 Northern Tioga SD

Printed 10/27/2016 4:24:50 PM

	<u>Capital Reserve (1431)(32)</u>	<u>Other Capital Projects Fund(39)</u>	<u>Debt Service(40)</u>	<u>Permanent(90)</u>	<u>Total</u>
1000 Instruction					
1100 Regular Programs - Elementary / Secondary					13,033,985.21
1200 Special Programs - Elementary / Secondary					4,334,665.83
1300 Vocational Education					1,282,214.80
1400 Other Instructional Programs - Elementary / Secondary					117,747.17
1800 Pre-Kindergarten					322,448.21
Total Instruction					\$19,091,061.22
2000 Support Services					
2100 Support Services - Students					950,474.99
2200 Support Services - Instructional Staff					1,433,065.69
2300 Support Services - Administration	1,034.71		61,602.56		1,846,955.95
2400 Support Services - Pupil Health					322,882.81
2500 Support Services - Business					345,530.59
2600 Operation and Maintenance of Plant Services					2,262,095.68
2700 Student Transportation Services					1,924,086.57
2800 Support Services - Central					67,022.58
Total Support Services	\$1,034.71		\$61,602.56		\$9,152,114.86
3000 Operation of Non-Instructional Services					
3200 Student Activities					594,210.87
3300 Community Services					22,173.91
Total Operation of Non-Instructional Services					\$616,384.78
4000 Facilities Acquisition, Construction and Improvement Services					
4200 Existing Site Improvement Services					40,806.09
4400 Architecture and Engineering Services / Educational Specifications - Improvements	32,069.22				32,069.22
4500 Building Acquisition and Construction Services - Original and Additional					40,151.00
4600 Existing Building Improvement Services	879,149.44				925,931.05
Total Facilities Acquisition, Construction and Improvement Services	\$911,218.66				\$1,038,957.36
5000 Other Expenditures and Financing Uses					
5100 Debt Service / Other Expenditures and Financing Uses			5,310,916.69		7,736,471.65
5200 Interfund Transfers - Out					1,209,410.00
Total Other Expenditures and Financing Uses			\$5,310,916.69		\$8,945,881.65
TOTAL ACTUAL EXPENDITURES & OTHER FINANCING USES	\$912,253.37		\$5,372,519.25		\$38,844,399.87

LEA : 117596003 Northern Tioga SD

Printed 10/27/2016 4:25:17 PM

PSERS Salary Data (Salary Data should relate to the General Fund only)

Amount Description	Amount
Total Salary Base for salaries subject to PSERS withholding	13,994,734.17
Total Federally Funded salaries subject to PSERS withholding	677,873.98
	<hr/>

Title I Expenditure Data

Amount Description	Amount
Expenditures Funded with Current Title I Funds	398,274.41
Expenditures Funded with Carry over Title I Funds	88,831.61
	<hr/>
Total Title I Expenditure Data	\$487,106.02
	<hr/>

Title I ARRA Amount

Amount Description	Amount
Portion of Total Title I Expenditures funded with ARRA Title I	<hr/>

Benefits for Staff Relative to Collective Bargaining Agreements

	OBJECT	COVERED	NOT COVERED	TOTAL
10 General Fund	No Self Insurance data to report			
	211 Medical Insurance	3,313,555.92	256,844.30	3,570,400.22
	212 Dental Insurance	166,442.09	12,901.46	179,343.55
	215 Eye Care Insurance			
	216 Prescription Insurance			
	271 Self-Insurance Medical Benefits			
	272 Self-Insurance Dental Benefits			
	275 Self-Insurance Eye Care Benefits			
	276 Self-Insurance Prescription Benefits			
	FUND TOTAL	\$3,479,998.01	\$269,745.76	\$3,749,743.77
50 Enterprise Fund	No Self Insurance data to report			
	211 Medical Insurance	125,772.10	75,471.96	201,244.06
	212 Dental Insurance	6,047.53	3,628.94	9,676.47
	215 Eye Care Insurance			
	216 Prescription Insurance			
	271 Self-Insurance Medical Benefits			
	272 Self-Insurance Dental Benefits			
	275 Self-Insurance Eye Care Benefits			
	276 Self-Insurance Prescription Benefits			
	FUND TOTAL	\$131,819.63	\$79,100.90	\$210,920.53
60 Internal Service Fund	No Self Insurance data to report			
	211 Medical Insurance			
	212 Dental Insurance			
	215 Eye Care Insurance			
	216 Prescription Insurance			
	271 Self-Insurance Medical Benefits			
	272 Self-Insurance Dental Benefits			
	275 Self-Insurance Eye Care Benefits			
	276 Self-Insurance Prescription Benefits			
	FUND TOTAL			
Total of All Funds		\$3,611,817.64	\$348,846.66	\$3,960,664.30

LEA : 117596003 Northern Tioga SD

Printed 10/27/2016 4:25:19 PM

Function	Special Education (Prior Year)	Nonspecial Education (Prior Year)	Total (Prior Year)	Special Education (Current Year)	Nonspecial Education (Current Year)	Total (Current Year)
2120 Guidance Services	69,919.48	393,437.58	463,357.06	75,171.10	418,844.70	494,015.80
2140 Psychological Services	176,803.44	14,335.41	191,138.85	183,954.70	14,915.25	198,869.95
2150 Speech Pathology and Audiology Services						
2160 Social Work Services	212,683.29	31,823.29	244,506.58	227,498.71	30,090.53	257,589.24
2260 Instruction and Curriculum Development Services	29,331.30	165,047.51	194,378.81	243,744.52	164,801.48	408,546.00
2350 Legal and Accounting Services	5,709.88	32,129.52	37,839.40	17,803.34	36,449.79	54,253.13
2420 Medical Services						
2440 Nursing Services	46,042.51	259,081.62	305,124.13	49,130.93	273,751.88	322,882.81
2700 Student Transportation Services	307,759.11	1,538,067.39	1,845,826.50	365,818.12	1,558,268.45	1,924,086.57
Total	\$848,249.01	\$2,433,922.32	\$3,282,171.33	\$1,163,121.42	\$2,497,122.08	\$3,660,243.50

(PRINCIPAL AMOUNTS ONLY)

ALL GOVERNMENTAL FUND TYPES

	Short-Term Borrowing	General Obligation Bonds/Notes	Authority Building Obligations	Other Long-Term Debt	Other Post-Employment Benefits (OPEB)	Compensated Absences	Net Pension Liability	Total
1. Debt at Beginning of Fiscal Year		10,035,000.00			320,490.00	227,499.00	42,270,000.00	52,852,989.00
2. Additional Debt Incurred During Year		5,290,000.00			246,058.00		4,857,000.00	10,393,058.00
3. Retirements and Repayments		7,400,000.00			247,622.00	7,689.48		7,655,311.48
4. Debt at End of Fiscal Year		7,925,000.00			318,926.00	219,809.52	47,127,000.00	55,590,735.52
5. Accreted Interest at End Of Fiscal Year								
6. Total Debt and Accreted Interest		7,925,000.00			318,926.00	219,809.52	47,127,000.00	55,590,735.52
7. Current Portion P&I - Due within 1 year		2,413,500.00						2,413,500.00
8. Interest Paid during current fiscal year		203,020.07						203,020.07

(PRINCIPAL AMOUNTS ONLY)

ALL PROPRIETARY FUND TYPES

- 1. Debt at Beginning of Fiscal Year
- 2. Additional Debt Incurred During Year
- 3. Retirements and Repayments
- 4. Debt at End of Fiscal Year
- 5. Accreted Interest at End Of Fiscal Year
- 6. Total Debt and Accreted Interest
- 7. Current Portion P&I - Due within 1 year
- 8. Interest Paid during current fiscal year

Total Principal and Interest Payments Made by Your School - All Funds

Function	Fund		Principal (910)	Principal (920)	Interest (830)	Total (Principal +Interest)	Misc Other Uses (990)
5110	10	General Fund	2,225,000.00		200,549.00	2,425,549.00	
5110	20	Special Revenue Funds					
5110	30	Capital Projects Funds					
5110	40	Debt Service Fund			2,471.06	2,471.06	
5110	90	Permanent Fund					
5120	10	General Fund					
5120	20	Special Revenue Funds					
5120	30	Capital Projects Funds					
5120	40	Debt Service Fund	5,255,545.63			5,255,545.63	
Total Debt Payments - Governmental Funds			\$7,480,545.63		\$203,020.06	\$7,683,565.69	

Function	Fund		Principal (910)	Principal (920)	Interest (830)	Total (Principal +Interest)
5110	50	Enterprise Fund				
5110	60	Internal Service Fund				
5120	50	Enterprise Fund				
5120	60	Internal Service Fund				
Total Debt Payments - Proprietary Funds						

Bond Details
Governmental Funds

Debt Category	Debt Issue Date (MM/YYYY)	Principal Amounts Only				Current Portion Due Within One Year (Principal and Interest)	Interest Paid During Fiscal Year
		Debt at Beginning of Fiscal Year	Additions	Reductions / Repayments	Debt at End of Fiscal Year		
Compensated Absences		227,499.00		7,689.48	219,809.52		
General Obligation Bonds/Notes – CIB	03/2011	5,175,000.00		5,175,000.00			80,545.63
General Obligation Bonds/Notes – CIB	06/2013	4,860,000.00		2,140,000.00	2,720,000.00	2,229,400.00	97,200.00
General Obligation Bonds/Notes – CIB	01/2016		5,290,000.00	85,000.00	5,205,000.00	184,100.00	25,274.44
Other Post-Employment Benefits (OPEB)		320,490.00	246,058.00	247,622.00	318,926.00		
Net Pension Liability		42,270,000.00	4,857,000.00		47,127,000.00		
Totals for Debt Entered:		\$52,852,989.00	\$10,393,058.00	\$7,655,311.48	\$55,590,735.52	\$2,413,500.00	\$203,020.07

General Fund (10)

Section 1: Tuition/Purchased Services as Reported within Expenditure Detail

	Amount
Tuition Reported in General Fund Expenditures 1000-560	879,368.79
Purchased Services in General Fund Expenditures 1000-594 and 1000-597	

Section 1 Total	\$879,368.79
------------------------	---------------------

Section 2: Tuition Paid to Institution Types During Fiscal Year

	Tuition Paid For Nonspecial Education	Tuition Paid For Special Education	Total
1 1306 Institutions	3,161.00	3,116.08	6,277.08
2 Institutionalized Children's Programs			
3 Juveniles Incarcerated in Adult Facilities			
4 Residential Treatment Facilities			
5 Other Local Education Agencies	58,812.33	73,323.29	132,135.62
6 Brick and Mortar Charter Schools			
7 Cyber Charter Schools	488,190.23	140,354.06	628,544.29
8 Career and Technology Centers	8,958.00		8,958.00
9 Approved Private Schools	13,105.00	12,352.19	25,457.19
10 PA Chartered Schools for the Deaf and Blind			
11 Private Residential Rehabilitative Institutions		22,122.00	22,122.00
12 Juvenile Detention Centers	1,946.54	3,831.66	5,778.20
13 Special Program Jointures			
14 Other Tuition Not Included Elsewhere In This Section	19,450.00	30,646.41	50,096.41
Section 2 Total	\$593,623.10	\$285,745.69	\$879,368.79

Food Service / Cafeteria Operations Fund (51)

3000 Operation of Non-Instructional Services

Total

100 Personnel Services – Salaries

100 Personnel Services – Salaries 452,669.33

Total Personnel Services – Salaries \$452,669.33

200 Personnel Services – Employee Benefits

210 Group Insurance – Contracted Provider 212,538.89

220 Social Security Contributions 34,277.01

230 PSERS Retirement Contributions 110,661.82

250 Unemployment Compensation 2,607.01

260 Workers’ Compensation 2,489.11

Total Personnel Services – Employee Benefits \$362,573.84

300 Purchased Professional and Technical Services

340 Technical Services 2,715.80

Total Purchased Professional and Technical Services \$2,715.80

400 Purchased Property Services

430 Repairs and Maintenance Services 18,725.24

Total Purchased Property Services \$18,725.24

500 Other Purchased Services

580 Travel 5,229.42

Total Other Purchased Services \$5,229.42

600 Supplies

610 General Supplies 20,329.39

630 Food 565,854.13

Total Supplies \$586,183.52

700 Property

740 Depreciation 10,167.40

760 Equipment – Replacement 178.12

Total Property \$10,345.52

Total 3000 Operation of Non-Instructional Services \$1,438,442.67

Food Service / Cafeteria Operations Fund (51)

	<u>Elementary</u>	<u>Secondary</u>	<u>Federal</u>	<u>Total</u>
3100 Food Services				
100 Personnel Services – Salaries				
100 Personnel Services – Salaries				452,669.33
Total Personnel Services – Salaries				\$452,669.33
200 Personnel Services – Employee Benefits				
210 Group Insurance – Contracted Provider				212,538.89
220 Social Security Contributions				34,277.01
230 PSERS Retirement Contributions				110,661.82
250 Unemployment Compensation				2,607.01
260 Workers' Compensation				2,489.11
Total Personnel Services – Employee Benefits				\$362,573.84
300 Purchased Professional and Technical Services				
340 Technical Services				2,715.80
Total Purchased Professional and Technical Services				\$2,715.80
400 Purchased Property Services				
430 Repairs and Maintenance Services				18,725.24
Total Purchased Property Services				\$18,725.24
500 Other Purchased Services				
580 Travel				5,229.42
Total Other Purchased Services				\$5,229.42
600 Supplies				
610 General Supplies				20,329.39
630 Food			102,687.69	565,854.13
Total Supplies			\$102,687.69	\$586,183.52
700 Property				
740 Depreciation				10,167.40
760 Equipment – Replacement				178.12
Total Property				\$10,345.52
Total 3100 Food Services			\$102,687.69	\$1,438,442.67

	<u>Food Service(51)</u>	<u>Child Care Operations(52)</u>	<u>Other Enterprise(58)</u>	<u>Internal Service(60)</u>	<u>Total</u>
3000 <u>Operation of Non-Instructional Services</u>					
3100 Food Services	1,438,442.67				1,438,442.67
Total Operation of Non-Instructional Services	\$1,438,442.67				\$1,438,442.67
TOTAL ACTUAL EXPENDITURES & OTHER FINANCING USES	\$1,438,442.67				\$1,438,442.67