

LEA Name : Northern Tioga SD  
Address : 110 Ellison Road  
Elkland , PA 16920

County : Tioga  
AUN Number : 117596003  
LEA Type : SD

## Annual Financial Report Accuracy Certification Statement

For Fiscal Year Ending  
**6/30/2020**

Pennsylvania Department of Education  
&  
Office of Comptroller Operations

PDE-2056: Intermediate Unit  
PDE-2057: School District, AVTS/CTC, Charter School,  
and Special Program Jointure

**CERTIFICATION: By signing this page I agree that the electronic data submitted is a complete and accurate statement of the financial operations and status of the local education agency for the fiscal year. It has been prepared in accordance with generally accepted accounting principles and established Commonwealth of PA reporting guidelines.**

*Deann L Barnes*  
Chief School Administrator Signature

11/25/2020  
Date

*Alyson Heuck*  
Board Secretary Signature

11/25/2020  
Date

Kathy VanSchaick  
Contact Person

(814)258-5644 Ext :1020  
Contact Person Telephone Number

kathy.vanschaick@ntiogasd.org  
Contact Person E-mail Address

(814)258-7876  
Contact Person Fax Number

**Audit Certification**  
**Annual Financial Report:**  
For Fiscal Year Ending **6/30/2020**  
**(Pursuant to PA School Code Section 218(b))**

LEA Name : Northern Tioga SD  
AUN Number : 117596003  
County : Tioga

<b>Audit Certification Due:</b> 12/31/2020
---

**This certification is applicable to the Annual Financial Report data submitted through the Consolidated Financial Reporting System (CFRS).**

CERTIFICATION: By signing this page I agree that the financial statements of the school have been properly audited as noted above pursuant to Article XXIV, and in the auditor's professional opinion, the Annual Financial Report (PDE-2057) submitted through CFRS is materially consistent with the audited financial statements.

Chief School Administrator

Mary L Barnes  
Signature

11/25/2020  
Date

Board Secretary

Alyson Yuick  
Signature

11/25/2020  
Date

Kathy VanSchaick

\_\_\_\_\_  
Contact Person

kathy.vanschaick@ntiogasd.org

\_\_\_\_\_  
Contact Person E-mail Address

(814)258-5644

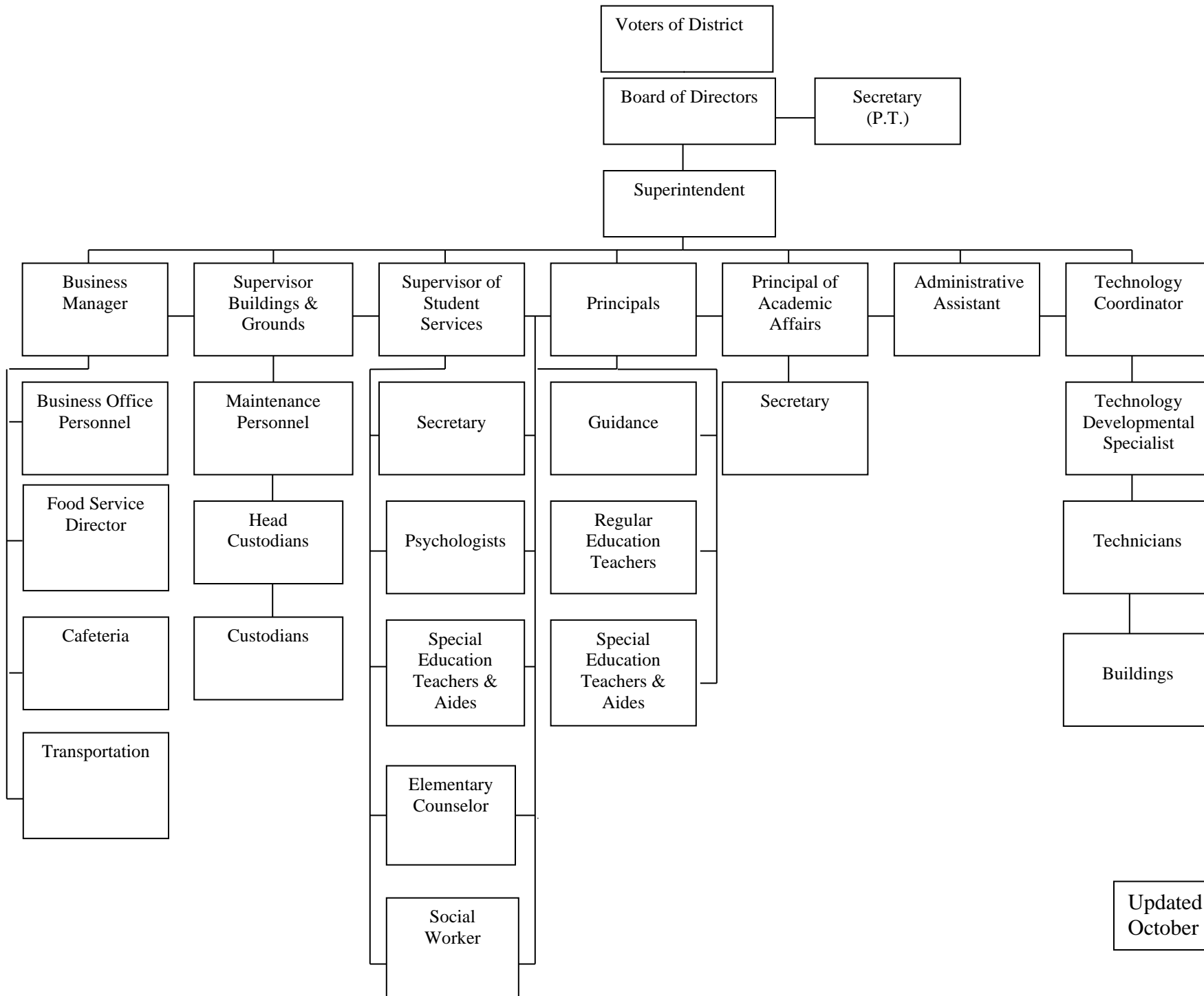
Ext :1020

\_\_\_\_\_  
Contact Person Telephone Number

(814)258-7876

\_\_\_\_\_  
Contact Person Fax Number

# NORTHERN TIOGA SCHOOL DISTRICT



Updated  
October 2018

<u>Val Number</u>	<u>Description</u>	<u>Justification</u>
10150	<p>NAG: Balance Sheet Govt Funds:Data has been entered for Fund 32, Line 0400 - Due to Other Funds. Since transfers out of Fund 32 are not allowed, this line should only be utilized when recording transactions related to interfund reimbursements. Please make corrections or provide brief details of the interfund reimbursement.</p> <p>NAG Fund 32, Line 0400: \$390,453.00</p>	This is a reimbursement due from the Capital Reserve Fund to the General Fund
30116	<p>Revenue Detail: A large amount has been reported as Earnings on Investments in Fund 32, account 6500, which should only include interest earnings of this fund. Correct or provide a brief explanation of the revenue reported.</p> <p>Revenue Detail 6500, Fund 32: \$262,496.65</p>	This amount is correct
41162	<p>Expenditure Detail, Salaries (Object 100) and Benefits (Object 200 series): Amounts must be entered for both Salaries and Benefits.</p> <p>Please verify following fund and function codes: Fund 10 Function 2310;</p>	This is a retirement contribution for health insurance for retired board secretary
50450	<p>SESS - 2350 Legal and Accounting Services: SESS Schedule amounts for Special Education vary from prior year by 40% or more. Correct the data or enter a justification.</p> <p>SESS Schedule 2350: \$13,599.73 Prior Year SESS Schedule 2350: \$7,728.54</p>	This is the correct amount

Amounts Expressed in Whole Dollars

	<u>General Fund</u> <u>(10)</u>	<u>Student Sponsored</u> <u>Activity Fund</u> <u>(21)</u>	<u>Public Purpose Trust</u> <u>(27)</u>	<u>Other Compt Approved</u> <u>(28)</u>	<u>Athletic / Activity</u> <u>(29)</u>
<b>Assets And Deferred Outflows Of Resources</b>					
<b>Assets</b>					
0100 Cash and Cash Equivalents	12,363,462				
0110 Investments	1,583,589				
0120 Taxes Receivable	1,340,118				
0130 Due From Other Funds	600,800				
0141 Due From Other Governments					
0142 State Revenue Receivable	1,190,522				
0143 Federal Revenue Receivable	743,430				
0145 Other Intergovernmental Revenue Receivable					
0146 Due from Primary Government					
0147 Due from Component Unit					
0150 Other Receivables	25,531				
0170 Inventories					
0180 Prepaid Expenses (Expenditures)					
0190 Other Current Assets					
<b>Total Assets</b>	<b>\$17,847,452</b>				
0910 Deferred Outflows of Resources					
<b>Total Assets And Deferred Outflows Of Resources</b>	<b>\$17,847,452</b>				

Amounts Expressed in Whole Dollars	<u>Capital Reserve (690.</u> <u>1850)</u> <u>(31)</u>	<u>Capital Reserve (1431)</u> <u>(32)</u>	<u>Other Capital Projects</u> <u>Fund</u> <u>(39)</u>	<u>Debt Service</u> <u>(40)</u>	<u>Permanent</u> <u>(90)</u>
<b>Assets And Deferred Outflows Of Resources</b>					
<b>Assets</b>					
0100 Cash and Cash Equivalents		1,418,426	1,381,375		
0110 Investments		5,479,929			
0120 Taxes Receivable					
0130 Due From Other Funds		314,000			
0141 Due From Other Governments					
0142 State Revenue Receivable					
0143 Federal Revenue Receivable					
0145 Other Intergovernmental Revenue Receivable					
0146 Due from Primary Government					
0147 Due from Component Unit					
0150 Other Receivables					
0170 Inventories					
0180 Prepaid Expenses (Expenditures)					
0190 Other Current Assets					
<b>Total Assets</b>		<b>\$7,212,355</b>	<b>\$1,381,375</b>		
0910 Deferred Outflows of Resources					
<b>Total Assets And Deferred Outflows Of Resources</b>		<b>\$7,212,355</b>	<b>\$1,381,375</b>		

Amounts Expressed in Whole Dollars

**Total Governmental Funds**

**Assets And Deferred Outflows Of Resources**

<b>Assets</b>	
0100 Cash and Cash Equivalents	15,163,263
0110 Investments	7,063,518
0120 Taxes Receivable	1,340,118
0130 Due From Other Funds	914,800
0141 Due From Other Governments	
0142 State Revenue Receivable	1,190,522
0143 Federal Revenue Receivable	743,430
0145 Other Intergovernmental Revenue Receivable	
0146 Due from Primary Government	
0147 Due from Component Unit	
0150 Other Receivables	25,531
0170 Inventories	
0180 Prepaid Expenses (Expenditures)	
0190 Other Current Assets	
<b>Total Assets</b>	<b>\$26,441,182</b>
0910 Deferred Outflows of Resources	
<b>Total Assets And Deferred Outflows Of Resources</b>	<b>\$26,441,182</b>

Amounts Expressed in Whole Dollars

<u>General Fund</u> <u>(10)</u>	<u>Student Sponsored</u> <u>Activity Fund</u> <u>(21)</u>	<u>Public Purpose Trust</u> <u>(27)</u>	<u>Other Compt Approved</u> <u>(28)</u>	<u>Athletic / Activity</u> <u>(29)</u>
------------------------------------	---	--	--	---

**Liabilities And Deferred Inflows Of Resources And Fund Balances**

**Liabilities**

0400 Due to Other Funds	314,000
0411 Due to Other Governments	
0412 Due to Primary Government	
0413 Due to Component Unit	
0420 Accounts Payable	266,933
0430 Contracts Payable	
0440 Current Portion of Long-Term Debt	236,562
0450 Short-Term Payables	
0461 Accrued Salaries and Benefits	3,439,903
0462 Payroll Deductions and Withholding	1,228,861
0480 Unearned Revenues	
0490 Other Current Liabilities	

**Total Liabilities** **\$5,486,259**

0950 Deferred Inflows of Resources	1,193,488
------------------------------------	-----------

**Fund Balances**

0810 Nonspendable Fund Balance	
0820 Restricted Fund Balance	
0830 Committed Fund Balance	
0840 Assigned Fund Balance	8,623,401
0850 Unassigned Fund Balance	2,544,304

**Total Fund Balances** **\$11,167,705**

**Total Liabilities, Deferred Inflows Of Resources And Fund Balances** **\$17,847,452**



Amounts Expressed in Whole Dollars	<u>Capital Reserve (690.</u> <u>1850)</u> <u>(31)</u>	<u>Capital Reserve (1431)</u> <u>(32)</u>	<u>Other Capital Projects</u> <u>Fund</u> <u>(39)</u>	<u>Debt Service</u> <u>(40)</u>	<u>Permanent</u> <u>(90)</u>
<b>Liabilities And Deferred Inflows Of Resources And Fund Balances</b>					
<b>Liabilities</b>					
0400 Due to Other Funds		390,453			
0411 Due to Other Governments					
0412 Due to Primary Government					
0413 Due to Component Unit					
0420 Accounts Payable		691,632	945,223		
0430 Contracts Payable					
0440 Current Portion of Long-Term Debt					
0450 Short-Term Payables					
0461 Accrued Salaries and Benefits					
0462 Payroll Deductions and Withholding					
0480 Unearned Revenues					
0490 Other Current Liabilities					
<b>Total Liabilities</b>		<b>\$1,082,085</b>	<b>\$945,223</b>		
0950 Deferred Inflows of Resources					
<b>Fund Balances</b>					
0810 Nonspendable Fund Balance					
0820 Restricted Fund Balance			436,152		
0830 Committed Fund Balance		6,130,270			
0840 Assigned Fund Balance					
0850 Unassigned Fund Balance					
<b>Total Fund Balances</b>		<b>\$6,130,270</b>	<b>\$436,152</b>		
<b>Total Liabilities, Deferred Inflows Of Resources And Fund Balances</b>		<b>\$7,212,355</b>	<b>\$1,381,375</b>		

Amounts Expressed in Whole Dollars

**Total Governmental Funds**

**Liabilities And Deferred Inflows Of Resources And Fund Balances**

**Liabilities**

0400 Due to Other Funds	704,453
0411 Due to Other Governments	
0412 Due to Primary Government	
0413 Due to Component Unit	
0420 Accounts Payable	1,903,788
0430 Contracts Payable	
0440 Current Portion of Long-Term Debt	236,562
0450 Short-Term Payables	
0461 Accrued Salaries and Benefits	3,439,903
0462 Payroll Deductions and Withholding	1,228,861
0480 Unearned Revenues	
0490 Other Current Liabilities	

**Total Liabilities \$7,513,567**

0950 Deferred Inflows of Resources	1,193,488
------------------------------------	-----------

**Fund Balances**

0810 Nonspendable Fund Balance	
0820 Restricted Fund Balance	436,152
0830 Committed Fund Balance	6,130,270
0840 Assigned Fund Balance	8,623,401
0850 Unassigned Fund Balance	2,544,304

**Total Fund Balances \$17,734,127**

**Total Liabilities, Deferred Inflows Of Resources And Fund Balances \$26,441,182**

Amounts Expressed in Whole Dollars	<u>General Fund</u> <u>(10)</u>	<u>Student Sponsored</u> <u>Activity Fund</u> <u>(21)</u>	<u>Public Purpose Trust</u> <u>(27)</u>	<u>Other Compt Approved</u> <u>(28)</u>	<u>Athletic / Activity</u> <u>(29)</u>
<b>Revenues</b>					
6000 Revenue from Local Sources	12,642,377				
7000 Revenue from State Sources	21,976,870				
8000 Revenue from Federal Sources	893,837				
<b>Total Revenues</b>	<b>\$35,513,084</b>				
<b>Expenditures</b>					
1000 Instruction	21,955,771				
2000 Support Services	9,583,231				
3000 Operation of Non-Instructional Services	664,119				
4000 Facilities Acquisition, Construction and Improvement Services					
5110 Debt Service	1,590,913				
5130 Refund of Prior Year Revenues / Receipts	1,015				
<b>Total Expenditures</b>	<b>\$33,795,049</b>				
<b>Excess (Deficiency) Of Revenues Over Expenditures</b>	<b>\$1,718,035</b>				
<b>Other Financing Sources (Uses)</b>					
9110 Face Value of Bonds Issued					
9120 Proceeds from Refunding of Bonds					
9130 Bond Premiums					
9200 Proceeds from Extended-Term Financing					
9300 Interfund Transfers - IN					
9400 Sale of or Compensation for Loss of Fixed Assets					
9710 Transfers from Component Units					
9720 Transfers from Primary Governments					
9910 Other Financing Sources Not Listed in the 9000 Series					
9990 Insurance Recoveries					
5120 Debt Service – Refunded Bonds					
5150 Bond Discounts					
5200 Interfund Transfers – Out	502,106				
5300 Transfers Out to Component Units/Primary Governments					
<b>Total Other Financing Sources (Uses)</b>	<b>(\$502,106)</b>				

Amounts Expressed in Whole Dollars	<u>Capital Reserve (690, 1850) (31)</u>	<u>Capital Reserve (1431) (32) (31)</u>	<u>Other Capital Projects Fund (39)</u>	<u>Debt Service (40)</u>	<u>Permanent (90)</u>
<b>Revenues</b>					
6000 Revenue from Local Sources		262,497	58,812		
7000 Revenue from State Sources					
8000 Revenue from Federal Sources					
<b>Total Revenues</b>		<b>\$262,497</b>	<b>\$58,812</b>		
<b>Expenditures</b>					
1000 Instruction					
2000 Support Services		4,647	1,435		
3000 Operation of Non-Instructional Services					
4000 Facilities Acquisition, Construction and Improvement Services		691,632	6,846,232		
5110 Debt Service		186,000			
5130 Refund of Prior Year Revenues / Receipts					
<b>Total Expenditures</b>		<b>\$882,279</b>	<b>\$6,847,667</b>		
<b>Excess (Deficiency) Of Revenues Over Expenditures</b>		<b>(\$619,782)</b>	<b>(\$6,788,855)</b>		
<b>Other Financing Sources (Uses)</b>					
9110 Face Value of Bonds Issued					
9120 Proceeds from Refunding of Bonds					
9130 Bond Premiums					
9200 Proceeds from Extended-Term Financing					
9300 Interfund Transfers - IN		500,000			
9400 Sale of or Compensation for Loss of Fixed Assets					
9710 Transfers from Component Units					
9720 Transfers from Primary Governments					
9910 Other Financing Sources Not Listed in the 9000 Series					
9990 Insurance Recoveries					
5120 Debt Service – Refunded Bonds					
5150 Bond Discounts					
5200 Interfund Transfers – Out					
5300 Transfers Out to Component Units/Primary Governments					
<b>Total Other Financing Sources (Uses)</b>		<b>\$500,000</b>			

Amounts Expressed in Whole Dollars	<u>Total Governmental Funds</u>
<b>Revenues</b>	
6000 Revenue from Local Sources	12,963,686
7000 Revenue from State Sources	21,976,870
8000 Revenue from Federal Sources	893,837
<b>Total Revenues</b>	<b>\$35,834,393</b>
<b>Expenditures</b>	
1000 Instruction	21,955,771
2000 Support Services	9,589,313
3000 Operation of Non-Instructional Services	664,119
4000 Facilities Acquisition, Construction and Improvement Services	7,537,864
5110 Debt Service	1,776,913
5130 Refund of Prior Year Revenues / Receipts	1,015
<b>Total Expenditures</b>	<b>\$41,524,995</b>
<b>Excess (Deficiency) Of Revenues Over Expenditures</b>	<b>(\$5,690,602)</b>
<b>Other Financing Sources (Uses)</b>	
9110 Face Value of Bonds Issued	
9120 Proceeds from Refunding of Bonds	
9130 Bond Premiums	
9200 Proceeds from Extended-Term Financing	
9300 Interfund Transfers - IN	500,000
9400 Sale of or Compensation for Loss of Fixed Assets	
9710 Transfers from Component Units	
9720 Transfers from Primary Governments	
9910 Other Financing Sources Not Listed in the 9000 Series	
9990 Insurance Recoveries	
5120 Debt Service – Refunded Bonds	
5150 Bond Discounts	
5200 Interfund Transfers – Out	502,106
5300 Transfers Out to Component Units/Primary Governments	
<b>Total Other Financing Sources (Uses)</b>	<b>(\$2,106)</b>

Amounts Expressed in Whole Dollars	<u>General Fund</u> <u>(10)</u>	<u>Student Sponsored</u> <u>Activity Fund</u> <u>(21)</u>	<u>Public Purpose Trust</u> <u>(27)</u>	<u>Other Compt Approved</u> <u>(28)</u>	<u>Athletic / Activity</u> <u>(29)</u>
<b>Special And Extraordinary Items</b>					
9920 Special Items – Gains					
9930 Extraordinary Items – Gains					
5520 Special Items – Losses					
5530 Extraordinary Items – Losses					
<b>Net Change In Fund Balances</b>	<b>\$1,215,929</b>				
<b>Fund Balance</b>					
0001 Fund Balance - Beginning of Fiscal Year	9,951,776				
<b>Fund Balance - End Of Year</b>	<b>\$11,167,705</b>				

Amounts Expressed in Whole Dollars	<u>Capital Reserve (690.</u> <u>1850)</u> <u>(31)</u>	<u>Capital Reserve (1431)</u> <u>(32)</u>	<u>Other Capital Projects</u> <u>Fund</u> <u>(39)</u>	<u>Debt Service</u> <u>(40)</u>	<u>Permanent</u> <u>(90)</u>
<b>Special And Extraordinary Items</b>					
9920 Special Items – Gains					
9930 Extraordinary Items – Gains					
5520 Special Items – Losses					
5530 Extraordinary Items – Losses					
<b>Net Change In Fund Balances</b>		(\$119,782)	(\$6,788,855)		
<b>Fund Balance</b>					
0001 Fund Balance - Beginning of Fiscal Year		6,250,052	7,225,006		
<b>Fund Balance - End Of Year</b>		\$6,130,270	\$436,151		

Amounts Expressed in Whole Dollars	<u>Total Governmental Funds</u>
<b>Special And Extraordinary Items</b>	
9920 Special Items – Gains	
9930 Extraordinary Items – Gains	
5520 Special Items – Losses	
5530 Extraordinary Items – Losses	
<b>Net Change In Fund Balances</b>	<b>(\$5,692,708)</b>
<b>Fund Balance</b>	
0001 Fund Balance - Beginning of Fiscal Year	23,426,834
<b>Fund Balance - End Of Year</b>	<b>\$17,734,126</b>



Amounts Expressed in Whole Dollars	<u>Food Service</u> <u>(51)</u>	<u>Child Care</u> <u>Operations</u> <u>(52)</u>	<u>Other Enterprise</u> <u>(58)</u>	<u>TOTAL</u>	<u>Internal Service</u> <u>(60)</u>
<b>Assets And Deferred Outflows Of Resources</b>					
<b>Current Assets</b>					
0100 Cash and Cash Equivalents	132,671			132,671	
0110 Investments					
0130 Due From Other Funds					
0141 Due From Other Governments					
0142 State Revenue Receivable					
0143 Federal Revenue Receivable	208,326			208,326	
0146 Due from Primary Government					
0147 Due from Component Unit					
0150 Other Receivables					
0170 Inventories	37,043			37,043	
0180 Prepaid Expenses (Expenditures)					
0190 Other Current Assets					
<b>Total Current Assets</b>	<b>\$378,040</b>			<b>\$378,040</b>	
<b>Noncurrent Assets</b>					
0211 Land					
0212 Site Improvements (Net)					
0220 Buildings and Building Improvements (Net)					
0230 Machinery, Equipment and Furniture (Net)	223,831			223,831	
0250 Construction in Progress					
0260 Long Term Prepayments					
0290 Other Noncurrent Assets					
<b>Total Noncurrent Assets</b>	<b>\$223,831</b>			<b>\$223,831</b>	
0910 Deferred Outflows of Resources					
<b>Total Assets And Deferred Outflows Of Resources</b>	<b>\$601,871</b>			<b>\$601,871</b>	

Amounts Expressed in Whole Dollars	<u>Food Service</u> <u>(51)</u>	<u>Child Care</u> <u>Operations</u> <u>(52)</u>	<u>Other Enterprise</u> <u>(58)</u>	<u>TOTAL</u>	<u>Internal Service</u> <u>(60)</u>
<b>Liabilities And Deferred Inflows Of Resources And Net Position</b>					
<b>Current Liabilities</b>					
0400 Due to Other Funds	210,347			210,347	
0411 Due to Other Governments					
0413 Due to Component Unit					
0420 Accounts Payable					
0430 Contracts Payable					
0440 Current Portion of Long-Term Debt	6,587			6,587	
0450 Short-Term Payables					
0461 Accrued Salaries and Benefits	14,603			14,603	
0462 Payroll Deductions and Withholding					
0480 Unearned Revenues	20,719			20,719	
0490 Other Current Liabilities					
<b>Total Current Liabilities</b>	<b>\$252,256</b>			<b>\$252,256</b>	
<b>Noncurrent Liabilities</b>					
0510 Bonds Payable					
0520 Extended-Term Financing Agreements Payable					
0530 Lease-Purchase Obligations					
0540 Accumulated Compensated Absences					
0550 Authority Lease Obligations					
0560 Other Post-Employment Benefits (OPEB)					
0570 Net Pension Liability					
0599 Other Noncurrent Liabilities					
<b>Total Noncurrent Liabilities</b>					
<b>Total Liabilities</b>	<b>\$252,256</b>			<b>\$252,256</b>	
0950 Deferred Inflows of Resources					
<b>Net Position</b>					
0791 Net Investment in Capital Assets					
0008 Restricted Net Position (0792 – 0798)					
0799 Unrestricted Net Position	349,615			349,615	
<b>Total Net Position</b>	<b>\$349,615</b>			<b>\$349,615</b>	
<b>Total Liabilities And Deferred Inflows Of Resources And Net Position</b>	<b>\$601,871</b>			<b>\$601,871</b>	

Amounts Expressed in Whole Dollars	<u>Food Service</u> <u>(51)</u>	<u>Child Care Operations</u> <u>(52)</u>	<u>Other Enterprise</u> <u>(58)</u>	<u>TOTAL</u>	<u>Internal Service</u> <u>(60)</u>
<b>Operating Revenues</b>					
6600 Food Service Revenue	291,607			291,607	
0071 Charges for Services					
0072 Other Operating Revenue					
<b>Total Operating Revenues</b>	<b>\$291,607</b>			<b>\$291,607</b>	
<b>Operating Expenses</b>					
100 Personnel Services – Salaries	506,862			506,862	
200 Personnel Services – Employee Benefits	423,098			423,098	
300 Purchased Professional and Technical Services	2,946			2,946	
400 Purchased Property Services	7,548			7,548	
500 Other Purchased Services	3,263			3,263	
600 Supplies	549,094			549,094	
740 Depreciation	17,876			17,876	
810 Dues and Fees					
890 Miscellaneous Expenditures					
<b>Total Operating Expenses</b>	<b>\$1,510,687</b>			<b>\$1,510,687</b>	
<b>Operating Income (Loss)</b>	<b>(\$1,219,080)</b>			<b>(\$1,219,080)</b>	
<b>Non Operating Revenues (Expenses)</b>					
6500 Earnings on Investments	1,866			1,866	
6920 Contributions and Donations from Private Sources	103			103	
6930 Gains or Losses on Sale of Fixed Assets					
6991 Refunds of a Prior Year Expenditure					
7000 Revenue from State Sources	171,855			171,855	
8000 Revenue from Federal Sources	963,201			963,201	
9990 Insurance Recoveries					
820 Claims and Judgments Against the LEA					
830 Interest					
<b>TOTAL Non Operating Revenues (Expenses)</b>	<b>\$1,137,025</b>			<b>\$1,137,025</b>	
<b>Income (Loss) Before Contributions And Transfers</b>	<b>(\$82,055)</b>			<b>(\$82,055)</b>	

Amounts Expressed in Whole Dollars	<u>Food Service</u> <u>(51)</u>	<u>Child Care Operations</u> <u>(52)</u>	<u>Other Enterprise</u> <u>(58)</u>	<u>TOTAL</u>	<u>Internal Service</u> <u>(60)</u>
<b>Contributions, Transfers, and Special and Extraordinary Items</b>					
5200 Interfund Transfers – Out					
5300 Transfers Out to Component Units/Primary Governments					
5520 Special Items – Losses					
5530 Extraordinary Items – Losses					
9300 Interfund Transfers - IN	2,106			2,106	
9500 Capital Contributions					
9700 Transfers IN From Component Units/Primary Governments					
9920 Special Items – Gains					
9930 Extraordinary Items – Gains					
<b>Change In Net Position</b>	<b>(\$79,949)</b>			<b>(\$79,949)</b>	
0002 Net Position - Beginning of Fiscal Year	429,564			429,564	
0003 Accounting Changes / Residual Equity Transfers					
<b>Net Position - End Of Year</b>	<b>\$349,615</b>			<b>\$349,615</b>	

Amounts Expressed in Whole Dollars	<u>Food Service</u> <u>(51)</u>	<u>Child Care Operations</u> <u>(52)</u>	<u>Other Enterprise</u> <u>(58)</u>	<u>TOTAL</u>	<u>Internal Service(60)</u>
<b>Cash Flows From Operating Activities</b>					
0011 Cash Receipts From Users	299,713			299,713	
0012 Cash Receipts From Assessments Made to Other Funds					
0013 Cash Receipts From Earnings on Investments					
0014 Cash Receipts From Other Operating Revenue					
0015 Cash Payments To Employees For Services	849,160			849,160	
0016 Cash Payments For Insurance Claims					
0017 Cash Payments To Suppliers For Goods and Services	459,342			459,342	
0018 Cash Payments For Other Operating Expenses					
<b>Net Cash Provided By (Used For) Operating Activities</b>	<b>(\$1,008,789)</b>			<b>(\$1,008,789)</b>	
<b>Cash Flows From Non-Capital Financing Activities</b>					
0021 Receipts From Local Sources - 6000	103			103	
0022 Receipts From State Sources - 7000	178,536			178,536	
0023 Receipts From Federal Sources -8000	770,048			770,048	
0024 Notes and Loans Received (Repaid)					
0025 Interest Paid on Notes/Loans - 5100-830					
0026 Operating Transfers In (Out)/Residual Equity Trans					
0027 Operating Transfers In (Out) Primary Government / Comp Unit	2,106			2,106	
0028 Receipts From Refund of Prior Year Expenditures - 6991					
0029 Special and Extraordinary Gains (losses)					
0030 Receipts from Insurance Recoveries -9990					
<b>Net Cash Prov By (Used for) Non-Capital Financing Activities</b>	<b>\$950,793</b>			<b>\$950,793</b>	
<b>Cash Flows From Capital and Related Financing Activities</b>					
0031 Payments For Fac Acq, Const, and Imp - 4000					
0032 Gain / (Loss) on Sale of Fixed Assets - 6930					
0033 Proceeds From Extended Term Financing - 9200					
0034 Principal Paid on Financing Agreements					
0035 Interest Paid on Financing Agreements - 5100-830					
0036 (Inc) Dec in Contributed Capital					
<b>Net Cash Prov By (Used for) Capital and Related Financing Activities</b>					
<b>Cash Flows From Investing Activities</b>					
0041 Earnings on Investments - 6500	1,866			1,866	
0042 Purchase of Inv Securities / Deposits to Inv Pools					
0043 Receipts From Investment Pool Withdrawals					
0044 Proceeds from Sale and Maturity of Inv Securities					

LEA : 117596003 Northern Tioga SD

Printed 11/25/2020 8:51:10 AM

0045 Loans Received (Paid)

<b>Net Cash Prov By (Used for) Investing Activities</b>	<b>\$1,866</b>	<b>\$1,866</b>
---	----------------	----------------

	<u>Food Service</u> <u>(51)</u>	<u>Child Care Operations</u> <u>(52)</u>	<u>Other Enterprise</u> <u>(58)</u>	<u>TOTAL</u>	<u>Internal Service</u> <u>(60)</u>
<b>Net Increase (Decrease) in Cash Flows</b>	<b>(56,130)</b>			<b>(56,130)</b>	
0004 Cash and Cash Equivalents Beginning of Year	188,801			188,801	
<b>Cash and Cash Equivalents at Year End</b>	<b>\$132,671</b>			<b>\$132,671</b>	
<hr/>					
<b>Reconciliation of Operating Income (Loss) To Net Cash Provided by (Used For) Operating Activities</b>					
0005 Operating Income (Loss) per REP	(1,219,080)			(1,219,080)	
<b>Adjustments</b>					
0051 Depreciation and Net Amortization	17,876			17,876	
0052 Provision for Uncollectible Accounts					
0053 Other Adjustments	107,646			107,646	
<b>Effect of Changes in Assets, Liabilities, Deferred Outflows and Deferred Inflows</b>					
0054 (Inc) Dec In Accounts Receivable (0120-0150)	376			376	
0055 Advances to Other Funds (0160)	77,419			77,419	
0056 (Inc) Dec in Inventories (0170)	(3,884)			(3,884)	
0057 (Inc) Dec in Prepaid Expenses (0180)					
0058 (Inc) Dec in Other Current or Noncurrent Assets					
0064 Deferred Outflows (0910)					
0059 Inc (Dec) in Accounts Payable (0400-0450)	(253)			(253)	
0060 Inc (Dec) in Accrued Salaries/Benefits (0461)	3,306			3,306	
0065 Inc (Dec) in Net Pension Liabilities (0570)					
0066 Inc (Dec) in Other Postemp Benefit Oblig (0560)					
0061 Inc (Dec) in Payroll Deductions/Withholding (0462)					
0062 Inc (Dec) in Unearned Revenue (0480)	7,730			7,730	
0063 Inc (Dec) in Other Current or Noncurrent Liabilities	75			75	
0067 Deferred Inflows (0950)					
<b>Total Adjustments</b>	<b>\$210,291</b>			<b>\$210,291</b>	
<b>Cash Provided By (Used for) Total</b>	<b>(\$1,008,789)</b>			<b>(\$1,008,789)</b>	

COMBINED STATEMENT OF CASH FLOWS  
SCHEDULE OF NONCASH INVESTING, CAPITAL, AND FINANCING ACTIVITIES

Explanation of Transaction and Balance Sheet Effect	Amount
<b>Total</b>	



LEA : 117596003 Northern Tioga SD

Printed 11/25/2020 8:51:22 AM

Amounts Expressed in Whole Dollars

	<u>Private Purpose Trust</u> (71)	<u>Investment Trust</u> (72)	<u>Pension Trust</u> (73)	<u>Student Activity Custodial</u> (81)
<b>Assets And Deferred Outflows Of Resources</b>				
<b>Assets</b>				
0100 Cash and Cash Equivalents	55,621			322,999
0110 Investments	131,613			
0130 Due From Other Funds				
0140 Due from Other Governments, Primary Government and Component Units				
0150 Other Receivables				
0170 Inventories				
0180 Prepaid Expenses (Expenditures)				
0190 Other Current Assets				
0220 Buildings and Building Improvements (Net)				
0230 Machinery, Equipment and Furniture (Net)				
<b>Total Assets</b>	<b>\$187,234</b>			<b>\$322,999</b>
0910 Deferred Outflows of Resources				
<b>Total Assets And Deferred Outflows Of Resources</b>	<b>\$187,234</b>			<b>\$322,999</b>

LEA : 117596003 Northern Tioga SD

Printed 11/25/2020 8:51:22 AM

Amounts Expressed in Whole Dollars	<u>Other Custodial</u> <u>(89)</u>	<u>Fiduciary Component Units</u> <u>(98)</u>	<u>Total Fiduciary Funds</u>
<b>Assets And Deferred Outflows Of Resources</b>			
<b>Assets</b>			
0100 Cash and Cash Equivalents	569,159		947,779
0110 Investments	508,384		639,997
0130 Due From Other Funds			
0140 Due from Other Governments, Primary Government and Component Units			
0150 Other Receivables			
0170 Inventories			
0180 Prepaid Expenses (Expenditures)			
0190 Other Current Assets			
0220 Buildings and Building Improvements (Net)			
0230 Machinery, Equipment and Furniture (Net)			
<b>Total Assets</b>	<b>\$1,077,543</b>		<b>\$1,587,776</b>
0910 Deferred Outflows of Resources			
<b>Total Assets And Deferred Outflows Of Resources</b>	<b>\$1,077,543</b>		<b>\$1,587,776</b>

LEA : 117596003 Northern Tioga SD

Printed 11/25/2020 8:51:22 AM

Amounts Expressed in Whole Dollars

Private Purpose Trust  
(71)

Investment Trust  
(72)

Pension Trust  
(73)

Student Activity Custodial  
(81)

**Liabilities, Deferred Inflows Of Resources And Net Position**

**Liabilities**

0400 Due to Other Funds				
0410 Due to Other Governments, Primary Government and Component Units				
0420 Accounts Payable				
0430 Contracts Payable				
0450 Short-Term Payables				
0460 Payroll Accruals and Withholdings				
0480 Unearned Revenues				
0490 Other Current Liabilities				322,999

<b>Total Liabilities</b>				<b>\$322,999</b>
--------------------------	--	--	--	------------------

0950 Deferred Inflows of Resources

**Net Position**

0791 Net Investment in Capital Assets				
0009 Restricted Net Position (0792 – 0798)				
0799 Unrestricted Net Position		187,234		

<b>Total Net Position</b>		<b>\$187,234</b>		
---------------------------	--	------------------	--	--

<b>Total Liabilities, Deferred Inflows Of Resources And Net Position</b>		<b>\$187,234</b>		<b>\$322,999</b>
--	--	------------------	--	------------------

LEA : 117596003 Northern Tioga SD

Printed 11/25/2020 8:51:22 AM

Amounts Expressed in Whole Dollars	<u>Other Custodial</u> <u>(89)</u>	<u>Fiduciary Component Units</u> <u>(98)</u>	<u>Total Fiduciary Funds</u>
<b>Liabilities, Deferred Inflows Of Resources And Net Position</b>			
<b>Liabilities</b>			
0400 Due to Other Funds			
0410 Due to Other Governments, Primary Government and Component Units			
0420 Accounts Payable	8,774		8,774
0430 Contracts Payable			
0450 Short-Term Payables			
0460 Payroll Accruals and Withholdings			
0480 Unearned Revenues			
0490 Other Current Liabilities	1,068,769		1,391,768
<b>Total Liabilities</b>	<b>\$1,077,543</b>		<b>\$1,400,542</b>
0950 Deferred Inflows of Resources			
<b>Net Position</b>			
0791 Net Investment in Capital Assets			
0009 Restricted Net Position (0792 – 0798)			
0799 Unrestricted Net Position			187,234
<b>Total Net Position</b>			<b>\$187,234</b>
<b>Total Liabilities, Deferred Inflows Of Resources And Net Position</b>	<b>\$1,077,543</b>		<b>\$1,587,776</b>

Amounts Expressed in Whole Dollars	<u>Private Purpose Trust</u> (71)	<u>Investment Trust</u> (72)	<u>Pension Trust</u> (73)	<u>Student Activity</u> <u>Custodial</u> (81)	<u>Other Custodial</u> (89)	<u>Fiduciary Component</u> <u>Units</u> (98)
<b>Additions</b>						
0091 Gifts and Contributions	10,270					
0095 Net Investment Earnings	1,084					
0092 Other Additions						
<b>Deductions</b>						
0093 Scholarships Awarded	7,578					
0094 Other Deductions	80					
<b>Change In Net Position</b>	<b>\$3,696</b>					
0006 Net Position – Beginning of Fiscal Year	183,538					
0007 Net Position Held in Trust for Pension Benefits						
<b>Net Position - End of Fiscal Year</b>	<b>\$187,234</b>					

Amounts Expressed in Whole Dollars	<u>Total Fiduciary Funds</u>
<b>Additions</b>	
0091 Gifts and Contributions	10,270
0095 Net Investment Earnings	1,084
0092 Other Additions	
<b>Deductions</b>	
0093 Scholarships Awarded	7,578
0094 Other Deductions	80
<b>Change in Net Position</b>	<b>\$3,696</b>
0006 Net Position – Beginning of Fiscal Year	183,538
0007 Net Position Held in Trust for Pension Benefits	
<b>Net Position - End of Fiscal Year</b>	<b>\$187,234</b>

	<u>Revenue Reported In Current Year</u>	<u>Current Year Tax Accrual</u>	<u>Prior Year Tax Accrual</u>	<u>Taxes Collected In Current Year</u>
<b><u>Revenue from Local Sources</u></b>				
6111 Current Real Estate Taxes	8,360,679.19			8,360,679.19
6112 Interim Real Estate Taxes	34,726.23			34,726.23
6113 Public Utility Realty Taxes	10,483.21			10,483.21
6114 Payments in Lieu of Current Taxes - State / Local	34,995.09			34,995.09
6143 Current Act 511 Local Services Taxes	25,327.63			25,327.63
6151 Current Act 511 Earned Income Taxes	2,259,606.88			2,259,606.88
6153 Current Act 511 Real Estate Transfer Taxes	150,143.29			150,143.29
6411 Delinquent Real Estate Taxes	1,022,884.19			1,022,884.19
6500 Earnings on Investments	173,468.74			
6832 Federal IDEA Revenue Received as Pass Through	415,412.85			
6910 Rentals	8,171.89			
6920 Contributions and Donations from Private Sources	29,691.85			
6949 Other Tuition from Patrons	2,850.00			
6991 Refunds of a Prior Year Expenditure	39,064.99			
6999 Other Revenues Not Specified Above	74,871.37			
<b>TOTAL Revenue from Local Sources</b>	<b>\$12,642,377.40</b>			<b>\$11,898,845.71</b>

**Revenue Reported  
In Current Year**

**Revenue from State Sources**

7111 Basic Education Funding-Formula	12,847,600.13		
7112 Basic Education Funding-Social Security	491,032.96		
7220 Vocational Education	99,788.56		
7240 Driver Education - Student	2,625.00		
7271 Special Education funds for School-Aged Pupils	1,737,363.83		
7311 Pupil Transportation Subsidy	1,566,535.57		
7312 Nonpublic and Charter School Pupil Transportation Subsidy	14,630.00		
7320 Rental and Sinking Fund Payments / Building Reimbursement Subsidy	590,904.61		
7330 Health Services (Medical, Dental, Nurse, Act 25)	40,328.46		
7340 State Property Tax Reduction Allocation	476,826.34		
7361 School Safety and Security Grants	22,790.46		
7505 Ready to Learn Block Grant	446,252.00		
7509 Supplemental Equipment Grants	11,335.36		
7810 State Share of Social Security and Medicare Taxes	207,822.89		
7820 State Share of Retirement Contributions	3,421,033.41		
<b>TOTAL Revenue from State Sources</b>	<b>\$21,976,869.58</b>		



**Revenue Reported  
In Current Year**

**Revenue from Federal Sources**

8514 NCLB, Title I - Improving the Academic Achievement of the Disadvantaged	548,255.16		
8515 NCLB, Title II - Preparing, Training and Recruiting High Quality Teachers and Principals	129,087.28		
8517 NCLB, Title IV - 21St Century Schools	41,090.59		
8521 Vocational Education - Operating Expenditures	36,035.83		
8810 School-Based Access Medicaid Reimbursement Program (SBAP) Reimbursements (Access)	129,994.48		
8820 Medical Assistance Reimbursement for Administrative Claiming (Quarterly) Program	9,373.44		
<b>TOTAL Revenue from Federal Sources</b>	<b>\$893,836.78</b>		
<b>TOTAL FROM ALL SOURCES</b>	<b>\$35,513,083.76</b>		<b>\$11,898,845.71</b>

LEA : 117596003 Northern Tioga SD

Printed 11/25/2020 8:51:48 AM

	<u>General Fund (10)</u>	<u>Student Sponsored Activity Fund (21)</u>	<u>Public Purpose Trust (27)</u>	<u>Other Compt Approved (28)</u>	<u>Athletic / Activity (29)</u>	<u>Capital Reserve (690, 1850) (31)</u>
<b>6000 Revenue from Local Sources</b>						
6111 Current Real Estate Taxes	8,360,679.19					
6112 Interim Real Estate Taxes	34,726.23					
6113 Public Utility Realty Taxes	10,483.21					
6114 Payments in Lieu of Current Taxes - State / Local	34,995.09					
6143 Current Act 511 Local Services Taxes	25,327.63					
6151 Current Act 511 Earned Income Taxes	2,259,606.88					
6153 Current Act 511 Real Estate Transfer Taxes	150,143.29					
6411 Delinquent Real Estate Taxes	1,022,884.19					
6500 Earnings on Investments	173,468.74					
6832 Federal IDEA Revenue Received as Pass Through	415,412.85					
6910 Rentals	8,171.89					
6920 Contributions and Donations from Private Sources	29,691.85					
6949 Other Tuition from Patrons	2,850.00					
6991 Refunds of a Prior Year Expenditure	39,064.99					
6999 Other Revenues Not Specified Above	74,871.37					
<b>6000 Total Revenue from Local Sources</b>	<b>\$12,642,377.40</b>					
<b>7000 Revenue from State Sources</b>						
7111 Basic Education Funding-Formula	12,847,600.13					
7112 Basic Education Funding-Social Security	491,032.96					
7220 Vocational Education	99,788.56					
7240 Driver Education - Student	2,625.00					
7271 Special Education funds for School-Aged Pupils	1,737,363.83					
7311 Pupil Transportation Subsidy	1,566,535.57					
7312 Nonpublic and Charter School Pupil Transportation Subsidy	14,630.00					
7320 Rental and Sinking Fund Payments / Building Reimbursement Subsidy	590,904.61					
7330 Health Services (Medical, Dental, Nurse, Act 25)	40,328.46					
7340 State Property Tax Reduction Allocation	476,826.34					
7361 School Safety and Security Grants	22,790.46					
7505 Ready to Learn Block Grant	446,252.00					
7509 Supplemental Equipment Grants	11,335.36					
7810 State Share of Social Security and Medicare Taxes	207,822.89					
7820 State Share of Retirement Contributions	3,421,033.41					
<b>7000 Total Revenue from State Sources</b>	<b>\$21,976,869.58</b>					
<b>8000 Revenue from Federal Sources</b>						
8514 NCLB, Title I - Improving the Academic Achievement of the Disadvantaged	548,255.16					

LEA : 117596003 Northern Tioga SD

Printed 11/25/2020 8:51:48 AM

	<u>Capital Reserve</u> <u>(1431) (32)</u>	<u>Other Capital</u> <u>Projects Fund (39)</u>	<u>Debt Service (40)</u>	<u>Permanent (90)</u>	<u>Total</u>
<b>6000 Revenue from Local Sources</b>					
6111 Current Real Estate Taxes					8,360,679.19
6112 Interim Real Estate Taxes					34,726.23
6113 Public Utility Realty Taxes					10,483.21
6114 Payments in Lieu of Current Taxes - State / Local					34,995.09
6143 Current Act 511 Local Services Taxes					25,327.63
6151 Current Act 511 Earned Income Taxes					2,259,606.88
6153 Current Act 511 Real Estate Transfer Taxes					150,143.29
6411 Delinquent Real Estate Taxes					1,022,884.19
6500 Earnings on Investments	262,496.65	58,812.23			494,777.62
6832 Federal IDEA Revenue Received as Pass Through					415,412.85
6910 Rentals					8,171.89
6920 Contributions and Donations from Private Sources					29,691.85
6949 Other Tuition from Patrons					2,850.00
6991 Refunds of a Prior Year Expenditure					39,064.99
6999 Other Revenues Not Specified Above					74,871.37
<b>6000 Total Revenue from Local Sources</b>	<b>\$262,496.65</b>	<b>\$58,812.23</b>			<b>\$12,963,686.28</b>
<b>7000 Revenue from State Sources</b>					
7111 Basic Education Funding-Formula					12,847,600.13
7112 Basic Education Funding-Social Security					491,032.96
7220 Vocational Education					99,788.56
7240 Driver Education - Student					2,625.00
7271 Special Education funds for School-Aged Pupils					1,737,363.83
7311 Pupil Transportation Subsidy					1,566,535.57
7312 Nonpublic and Charter School Pupil Transportation Subsidy					14,630.00
7320 Rental and Sinking Fund Payments / Building Reimbursement Subsidy					590,904.61
7330 Health Services (Medical, Dental, Nurse, Act 25)					40,328.46
7340 State Property Tax Reduction Allocation					476,826.34
7361 School Safety and Security Grants					22,790.46
7505 Ready to Learn Block Grant					446,252.00
7509 Supplemental Equipment Grants					11,335.36
7810 State Share of Social Security and Medicare Taxes					207,822.89
7820 State Share of Retirement Contributions					3,421,033.41
<b>7000 Total Revenue from State Sources</b>					<b>\$21,976,869.58</b>
<b>8000 Revenue from Federal Sources</b>					
8514 NCLB, Title I - Improving the Academic Achievement of the Disadvantaged					548,255.16

	<u>General Fund (10)</u>	<u>Student Sponsored Activity Fund (21)</u>	<u>Public Purpose Trust (27)</u>	<u>Other Compt Approved (28)</u>	<u>Athletic / Activity (29)</u>	<u>Capital Reserve (690.1850) (31)</u>
<b>8000 Revenue from Federal Sources</b>						
8515 NCLB, Title II - Preparing, Training and Recruiting High Quality Teachers and Principals	129,087.28					
8517 NCLB, Title IV - 21st Century Schools	41,090.59					
8521 Vocational Education - Operating Expenditures	36,035.83					
8810 School-Based Access Medicaid Reimbursement Program (SBAP) Reimbursements (Access)	129,994.48					
8820 Medical Assistance Reimbursement for Administrative Claiming (Quarterly) Program	9,373.44					
<b>8000 Total Revenue from Federal Sources</b>	<b>\$893,836.78</b>					
<b>9000 Other Financing Sources</b>						
9310 General Fund Transfers						
<b>9000 Total Other Financing Sources</b>						
<b>Total From All Sources</b>	<b>\$35,513,083.76</b>					

LEA : 117596003 Northern Tioga SD

Printed 11/25/2020 8:51:48 AM

	<u>Capital Reserve</u> <u>(1431) (32)</u>	<u>Other Capital</u> <u>Projects Fund (39)</u>	<u>Debt Service (40)</u>	<u>Permanent (90)</u>	<u>Total</u>
<b>8000 Revenue from Federal Sources</b>					
8515 NCLB, Title II - Preparing, Training and Recruiting High Quality Teachers and Principals					129,087.28
8517 NCLB, Title IV - 21st Century Schools					41,090.59
8521 Vocational Education - Operating Expenditures					36,035.83
8810 School-Based Access Medicaid Reimbursement Program (SBAP) Reimbursements (Access)					129,994.48
8820 Medical Assistance Reimbursement for Administrative Claiming (Quarterly) Program					9,373.44
<b>8000 Total Revenue from Federal Sources</b>					<b>\$893,836.78</b>
<b>9000 Other Financing Sources</b>					
9310 General Fund Transfers	500,000.00				500,000.00
<b>9000 Total Other Financing Sources</b>	<b>\$500,000.00</b>				<b>\$500,000.00</b>
<b>Total From All Sources</b>	<b>\$762,496.65</b>	<b>\$58,812.23</b>			<b>\$36,334,392.64</b>

	<u>General Fund (10)</u>	<u>Student Sponsored Activity Fund (21)</u>	<u>Public Purpose Trust (27)</u>	<u>Other Compt Approved (28)</u>	<u>Athletic / Activity (29)</u>	<u>Capital Reserve (690. 1850) (31)</u>
Revenue from Local Sources	12,642,377.40					
Revenue from State Sources	21,976,869.58					
Revenue from Federal Sources	893,836.78					
Other Financing Sources						
<b>Total From All Sources</b>	<b>\$35,513,083.76</b>					

	<u>Capital Reserve (1431)</u> <u>(32)</u>	<u>Other Capital Projects</u> <u>Fund (39)</u>	<u>Debt Service (40)</u>	<u>Permanent (90)</u>	<u>Total</u>
Revenue from Local Sources	262,496.65	58,812.23			12,963,686.28
Revenue from State Sources					21,976,869.58
Revenue from Federal Sources					893,836.78
Other Financing Sources	500,000.00				500,000.00
<b>Total From All Sources</b>	<b>\$762,496.65</b>	<b>\$58,812.23</b>			<b>\$36,334,392.64</b>

General Fund (10)

	<u>Total</u>
<b>1000 Instruction</b>	
<b>100 Personnel Services – Salaries</b>	
100 Personnel Services – Salaries	11,356,879.30
<b>Total Personnel Services – Salaries</b>	<b>\$11,356,879.30</b>
<b>200 Personnel Services – Employee Benefits</b>	
210 Group Insurance – Contracted Provider	3,976,084.90
220 Social Security Contributions	841,428.22
230 PSERS Retirement Contributions	3,860,894.70
250 Unemployment Compensation	2,023.82
260 Workers' Compensation	59,080.29
291 Other Retirement Plans	8,283.56
299 All Other Employee Benefits	15,222.00
<b>Total Personnel Services – Employee Benefits</b>	<b>\$8,763,017.49</b>
<b>300 Purchased Professional and Technical Services</b>	
322 Professional Educational Services – Ius	133,861.50
329 Professional Educational Services – Other	33,437.50
330 Other Professional Services	45,389.33
<b>Total Purchased Professional and Technical Services</b>	<b>\$212,688.33</b>
<b>400 Purchased Property Services</b>	
430 Repairs and Maintenance Services	9,005.96
440 Rentals	71,557.02
<b>Total Purchased Property Services</b>	<b>\$80,562.98</b>
<b>500 Other Purchased Services</b>	
510 Student Transportation Services	7,432.32
530 Communications	22,826.76
561 Tuition To Other School Districts Within the State	123,952.47
562 Tuition To Pennsylvania Charter Schools	670,417.19
567 Tuition To Approved Private Schools (APS) and PA Chartered Schools for the Deaf and Blind	1,322.89
568 Tuition To Private Residential Rehabilitative Institutions (PRRI) [In-State] and Detention Centers	4,225.84
569 Tuition – Other	141,362.76
580 Travel	2,760.81
<b>Total Other Purchased Services</b>	<b>\$974,301.04</b>
<b>600 Supplies</b>	
610 General Supplies	181,232.61
630 Food	991.61
640 Books and Periodicals	189,019.97
650 Supplies & Fees – Technology Related	51,208.30
<b>Total Supplies</b>	<b>\$422,452.49</b>
<b>700 Property</b>	
752 Capital Equipment – Original and Additional	35,726.84
756 Capitalized Technology Equipment – Original	21,732.00
758 Capitalized Technology Software - Original	6,555.00
762 Capitalized Equipment - Replacement	4,933.16
766 Capitalized Technology Equipment – Replacement	32,960.04



**General Fund (10)**

<b>1000 Instruction</b>	<b><u>Total</u></b>
<b>700 <u>Property</u></b>	
768 Capitalized Technology Software - Replacement	42,427.00
<b>Total Property</b>	<b>\$144,334.04</b>
<b>800 <u>Other Objects</u></b>	
810 Dues and Fees	1,535.00
<b>Total Other Objects</b>	<b>\$1,535.00</b>
<b>Total 1000 Instruction</b>	<b>\$21,955,770.67</b>

**General Fund (10)**

**1100 Regular Programs – Elementary / Secondary**

	<u>Elementary</u>	<u>Secondary</u>	<u>Federal</u>	<u>Total</u>
<b>100 Personnel Services – Salaries</b>				
100 Personnel Services – Salaries	4,269,954.46	3,982,354.29	421,711.83	8,674,020.58
<b>Total Personnel Services – Salaries</b>	<b>\$4,269,954.46</b>	<b>\$3,982,354.29</b>	<b>\$421,711.83</b>	<b>\$8,674,020.58</b>
<b>200 Personnel Services – Employee Benefits</b>				
210 Group Insurance – Contracted Provider	1,411,014.13	1,189,379.69	109,756.60	2,710,150.42
220 Social Security Contributions	323,484.61	292,897.39	27,791.55	644,173.55
230 PSERS Retirement Contributions	1,464,048.73	1,362,398.65	126,648.91	2,953,096.29
250 Unemployment Compensation	741.59	(130.40)	475.19	1,086.38
260 Workers' Compensation	22,500.67	20,552.62	2,050.67	45,103.96
291 Other Retirement Plans	4,250.00	2,912.00	150.56	7,312.56
299 All Other Employee Benefits	7,030.50	5,869.50		12,900.00
<b>Total Personnel Services – Employee Benefits</b>	<b>\$3,233,070.23</b>	<b>\$2,873,879.45</b>	<b>\$266,873.48</b>	<b>\$6,373,823.16</b>
<b>300 Purchased Professional and Technical Services</b>				
329 Professional Educational Services – Other		33,437.50		33,437.50
<b>Total Purchased Professional and Technical Services</b>		<b>\$33,437.50</b>		<b>\$33,437.50</b>
<b>400 Purchased Property Services</b>				
430 Repairs and Maintenance Services	2,227.06	833.19		3,060.25
440 Rentals	34,421.91	25,455.11		59,877.02
<b>Total Purchased Property Services</b>	<b>\$36,648.97</b>	<b>\$26,288.30</b>		<b>\$62,937.27</b>
<b>500 Other Purchased Services</b>				
510 Student Transportation Services	956.25	1,368.75		2,325.00
530 Communications	11,965.80	10,860.96		22,826.76
561 Tuition To Other School Districts Within the State	1,659.00	18,000.36		19,659.36
562 Tuition To Pennsylvania Charter Schools	188,373.65	188,373.65		376,747.30
568 Tuition To Private Residential Rehabilitative Institutions (PRRI) [In-State] and Detention Centers	2,112.92	2,112.92		4,225.84
569 Tuition – Other	38,911.25	57,151.51		96,062.76
580 Travel	129.92	50.11		180.03
<b>Total Other Purchased Services</b>	<b>\$244,108.79</b>	<b>\$277,918.26</b>		<b>\$522,027.05</b>
<b>600 Supplies</b>				
610 General Supplies	70,912.39	80,555.85	5,015.57	156,483.81
640 Books and Periodicals	32,055.19	156,964.78		189,019.97
650 Supplies & Fees – Technology Related	29,110.05	21,149.25		50,259.30
<b>Total Supplies</b>	<b>\$132,077.63</b>	<b>\$258,669.88</b>	<b>\$5,015.57</b>	<b>\$395,763.08</b>
<b>700 Property</b>				
756 Capitalized Technology Equipment – Original	14,931.00	6,801.00		21,732.00
762 Capitalized Equipment - Replacement		4,933.16		4,933.16
766 Capitalized Technology Equipment – Replacement	20,924.26	12,035.78		32,960.04
768 Capitalized Technology Software - Replacement	36,337.00	6,090.00		42,427.00
<b>Total Property</b>	<b>\$72,192.26</b>	<b>\$29,859.94</b>		<b>\$102,052.20</b>
<b>800 Other Objects</b>				
810 Dues and Fees	140.00			140.00

General Fund (10)

1100 Regular Programs – Elementary / Secondary

	<u>Elementary</u>	<u>Secondary</u>	<u>Federal</u>	<u>Total</u>
Total Other Objects	\$140.00			\$140.00
Total 1100 Regular Programs – Elementary / Secondary	\$7,988,192.34	\$7,482,407.62	\$693,600.88	\$16,164,200.84

**General Fund (10)**

**1110 Regular Programs**

	<u>Elementary</u>	<u>Secondary</u>	<u>Federal</u>	<u>Total</u>
<b>100 Personnel Services – Salaries</b>				
100 Personnel Services – Salaries	4,269,954.46	3,982,354.29		8,252,308.75
<b>Total Personnel Services – Salaries</b>	<b>\$4,269,954.46</b>	<b>\$3,982,354.29</b>		<b>\$8,252,308.75</b>
<b>200 Personnel Services – Employee Benefits</b>				
210 Group Insurance – Contracted Provider	1,411,014.13	1,189,379.69		2,600,393.82
220 Social Security Contributions	323,484.61	292,897.39		616,382.00
230 PSERS Retirement Contributions	1,464,048.73	1,362,398.65		2,826,447.38
250 Unemployment Compensation	741.59	(130.40)		611.19
260 Workers' Compensation	22,500.67	20,552.62		43,053.29
291 Other Retirement Plans	4,250.00	2,912.00		7,162.00
299 All Other Employee Benefits	7,030.50	5,869.50		12,900.00
<b>Total Personnel Services – Employee Benefits</b>	<b>\$3,233,070.23</b>	<b>\$2,873,879.45</b>		<b>\$6,106,949.68</b>
<b>300 Purchased Professional and Technical Services</b>				
329 Professional Educational Services – Other		33,437.50		33,437.50
<b>Total Purchased Professional and Technical Services</b>		<b>\$33,437.50</b>		<b>\$33,437.50</b>
<b>400 Purchased Property Services</b>				
430 Repairs and Maintenance Services	2,227.06	833.19		3,060.25
440 Rentals	34,421.91	25,455.11		59,877.02
<b>Total Purchased Property Services</b>	<b>\$36,648.97</b>	<b>\$26,288.30</b>		<b>\$62,937.27</b>
<b>500 Other Purchased Services</b>				
510 Student Transportation Services	956.25	1,368.75		2,325.00
530 Communications	11,965.80	10,860.96		22,826.76
561 Tuition To Other School Districts Within the State	1,659.00	18,000.36		19,659.36
562 Tuition To Pennsylvania Charter Schools	188,373.65	188,373.65		376,747.30
568 Tuition To Private Residential Rehabilitative Institutions (PRRI) [In-State] and Detention Centers	2,112.92	2,112.92		4,225.84
569 Tuition – Other	38,911.25	57,151.51		96,062.76
580 Travel	129.92	50.11		180.03
<b>Total Other Purchased Services</b>	<b>\$244,108.79</b>	<b>\$277,918.26</b>		<b>\$522,027.05</b>
<b>600 Supplies</b>				
610 General Supplies	70,912.39	80,555.85		151,468.24
640 Books and Periodicals	32,055.19	156,964.78		189,019.97
650 Supplies & Fees – Technology Related	29,110.05	21,149.25		50,259.30
<b>Total Supplies</b>	<b>\$132,077.63</b>	<b>\$258,669.88</b>		<b>\$390,747.51</b>
<b>700 Property</b>				
756 Capitalized Technology Equipment – Original	14,931.00	6,801.00		21,732.00
762 Capitalized Equipment - Replacement		4,933.16		4,933.16
766 Capitalized Technology Equipment – Replacement	20,924.26	12,035.78		32,960.04
768 Capitalized Technology Software - Replacement	36,337.00	6,090.00		42,427.00
<b>Total Property</b>	<b>\$72,192.26</b>	<b>\$29,859.94</b>		<b>\$102,052.20</b>
<b>800 Other Objects</b>				
810 Dues and Fees	140.00			140.00

LEA : 117596003 Northern Tioga SD

Printed 11/25/2020 8:52:03 AM

General Fund (10)

1110 Regular Programs

	<u>Elementary</u>	<u>Secondary</u>	<u>Federal</u>	<u>Total</u>
Total Other Objects	\$140.00			\$140.00
Total 1110 Regular Programs	\$7,988,192.34	\$7,482,407.62		\$15,470,599.96

**General Fund (10)**

**1190 Federally-Funded Regular Programs**

	<u>Elementary</u>	<u>Secondary</u>	<u>Federal</u>	<u>Total</u>
<b>100 Personnel Services – Salaries</b>				
100 Personnel Services – Salaries			421,711.83	421,711.83
<b>Total Personnel Services – Salaries</b>			<b>\$421,711.83</b>	<b>\$421,711.83</b>
<b>200 Personnel Services – Employee Benefits</b>				
210 Group Insurance – Contracted Provider			109,756.60	109,756.60
220 Social Security Contributions			27,791.55	27,791.55
230 PSERS Retirement Contributions			126,648.91	126,648.91
250 Unemployment Compensation			475.19	475.19
260 Workers' Compensation			2,050.67	2,050.67
291 Other Retirement Plans			150.56	150.56
<b>Total Personnel Services – Employee Benefits</b>			<b>\$266,873.48</b>	<b>\$266,873.48</b>
<b>600 Supplies</b>				
610 General Supplies			5,015.57	5,015.57
<b>Total Supplies</b>			<b>\$5,015.57</b>	<b>\$5,015.57</b>
<b>Total 1190 Federally-Funded Regular Programs</b>			<b>\$693,600.88</b>	<b>\$693,600.88</b>

**General Fund (10)**

**1200 Special Programs – Elementary / Secondary**

	<u>Elementary</u>	<u>Secondary</u>	<u>Federal</u>	<u>Total</u>
<b>100 Personnel Services – Salaries</b>				
100 Personnel Services – Salaries	1,208,211.68	1,224,214.00	84,794.74	2,517,220.42
<b>Total Personnel Services – Salaries</b>	<b>\$1,208,211.68</b>	<b>\$1,224,214.00</b>	<b>\$84,794.74</b>	<b>\$2,517,220.42</b>
<b>200 Personnel Services – Employee Benefits</b>				
210 Group Insurance – Contracted Provider	601,772.18	595,154.70	24,485.55	1,221,412.43
220 Social Security Contributions	88,314.03	90,166.04	6,378.76	184,858.83
230 PSERS Retirement Contributions	408,768.98	414,163.28	28,167.21	851,099.47
250 Unemployment Compensation	264.03	426.85	176.43	867.31
260 Workers' Compensation	6,272.38	6,365.29	466.40	13,104.07
291 Other Retirement Plans	600.00	258.00		858.00
299 All Other Employee Benefits	516.00	1,806.00		2,322.00
<b>Total Personnel Services – Employee Benefits</b>	<b>\$1,106,507.60</b>	<b>\$1,108,340.16</b>	<b>\$59,674.35</b>	<b>\$2,274,522.11</b>
<b>300 Purchased Professional and Technical Services</b>				
322 Professional Educational Services – lus	66,287.56	67,573.94		133,861.50
330 Other Professional Services	20,314.16	20,314.15		40,628.31
<b>Total Purchased Professional and Technical Services</b>	<b>\$86,601.72</b>	<b>\$87,888.09</b>		<b>\$174,489.81</b>
<b>400 Purchased Property Services</b>				
430 Repairs and Maintenance Services	2,649.71	2,649.71		5,299.42
<b>Total Purchased Property Services</b>	<b>\$2,649.71</b>	<b>\$2,649.71</b>		<b>\$5,299.42</b>
<b>500 Other Purchased Services</b>				
510 Student Transportation Services	1,468.52	1,423.30		2,891.82
561 Tuition To Other School Districts Within the State	49,931.36	605.00		50,536.36
562 Tuition To Pennsylvania Charter Schools	146,834.95	146,834.94		293,669.89
567 Tuition To Approved Private Schools (APS) and PA Chartered Schools for the Deaf and Blind	661.44	661.45		1,322.89
569 Tuition – Other	22,650.00	22,650.00		45,300.00
580 Travel	95.33	95.32		190.65
<b>Total Other Purchased Services</b>	<b>\$221,641.60</b>	<b>\$172,270.01</b>		<b>\$393,911.61</b>
<b>600 Supplies</b>				
610 General Supplies	4,130.82	4,768.07		8,898.89
630 Food	982.61	9.00		991.61
650 Supplies & Fees – Technology Related	949.00			949.00
<b>Total Supplies</b>	<b>\$6,062.43</b>	<b>\$4,777.07</b>		<b>\$10,839.50</b>
<b>700 Property</b>				
758 Capitalized Technology Software - Original		6,555.00		6,555.00
<b>Total Property</b>		<b>\$6,555.00</b>		<b>\$6,555.00</b>
<b>Total 1200 Special Programs – Elementary / Secondary</b>	<b>\$2,631,674.74</b>	<b>\$2,606,694.04</b>	<b>\$144,469.09</b>	<b>\$5,382,837.87</b>

**General Fund (10)**

**1210 Life Skills Support**

	<u>Elementary</u>	<u>Secondary</u>	<u>Federal</u>	<u>Total</u>
<b>100 Personnel Services – Salaries</b>				
100 Personnel Services – Salaries	201,003.95	130,026.60		331,030.55
<b>Total Personnel Services – Salaries</b>	<b>\$201,003.95</b>	<b>\$130,026.60</b>		<b>\$331,030.55</b>
<b>200 Personnel Services – Employee Benefits</b>				
210 Group Insurance – Contracted Provider	98,374.30	102,678.31		201,052.61
220 Social Security Contributions	14,704.29	9,265.25		23,969.54
230 PSERS Retirement Contributions	68,156.11	44,491.79		112,647.90
250 Unemployment Compensation	52.12	45.70		97.82
260 Workers' Compensation	1,043.95	675.29		1,719.24
299 All Other Employee Benefits		258.00		258.00
<b>Total Personnel Services – Employee Benefits</b>	<b>\$182,330.77</b>	<b>\$157,414.34</b>		<b>\$339,745.11</b>
<b>500 Other Purchased Services</b>				
510 Student Transportation Services	911.35	970.92		1,882.27
569 Tuition – Other	22,650.00	22,650.00		45,300.00
<b>Total Other Purchased Services</b>	<b>\$23,561.35</b>	<b>\$23,620.92</b>		<b>\$47,182.27</b>
<b>600 Supplies</b>				
610 General Supplies	1,292.94	1,328.31		2,621.25
630 Food	982.61	9.00		991.61
<b>Total Supplies</b>	<b>\$2,275.55</b>	<b>\$1,337.31</b>		<b>\$3,612.86</b>
<b>Total 1210 Life Skills Support</b>	<b>\$409,171.62</b>	<b>\$312,399.17</b>		<b>\$721,570.79</b>



**General Fund (10)**

**1220 Sensory Support**

	<u>Elementary</u>	<u>Secondary</u>	<u>Federal</u>	<u>Total</u>
<b>100 Personnel Services – Salaries</b>				
100 Personnel Services – Salaries	26,068.00	26,068.00	67,691.00	119,827.00
<b>Total Personnel Services – Salaries</b>	<b>\$26,068.00</b>	<b>\$26,068.00</b>	<b>\$67,691.00</b>	<b>\$119,827.00</b>
<b>200 Personnel Services – Employee Benefits</b>				
210 Group Insurance – Contracted Provider	5,082.96	5,082.95	22,982.23	33,148.14
220 Social Security Contributions	1,895.30	1,895.30	5,070.30	8,860.90
230 PSERS Retirement Contributions	9,337.95	9,337.95	22,318.50	40,994.40
250 Unemployment Compensation	(35.35)	(35.35)	88.00	17.30
260 Workers' Compensation	125.00	124.99	372.32	622.31
<b>Total Personnel Services – Employee Benefits</b>	<b>\$16,405.86</b>	<b>\$16,405.84</b>	<b>\$50,831.35</b>	<b>\$83,643.05</b>
<b>300 Purchased Professional and Technical Services</b>				
322 Professional Educational Services – lus	45,181.48	45,181.47		90,362.95
<b>Total Purchased Professional and Technical Services</b>	<b>\$45,181.48</b>	<b>\$45,181.47</b>		<b>\$90,362.95</b>
<b>400 Purchased Property Services</b>				
430 Repairs and Maintenance Services	2,649.71	2,649.71		5,299.42
<b>Total Purchased Property Services</b>	<b>\$2,649.71</b>	<b>\$2,649.71</b>		<b>\$5,299.42</b>
<b>500 Other Purchased Services</b>				
580 Travel	95.33	95.32		190.65
<b>Total Other Purchased Services</b>	<b>\$95.33</b>	<b>\$95.32</b>		<b>\$190.65</b>
<b>600 Supplies</b>				
610 General Supplies	41.09	41.08		82.17
<b>Total Supplies</b>	<b>\$41.09</b>	<b>\$41.08</b>		<b>\$82.17</b>
<b>Total 1220 Sensory Support</b>	<b>\$90,441.47</b>	<b>\$90,441.42</b>	<b>\$118,522.35</b>	<b>\$299,405.24</b>

**General Fund (10)**

**1230 Emotional Support**

	<u>Elementary</u>	<u>Secondary</u>	<u>Federal</u>	<u>Total</u>
<b>100 Personnel Services – Salaries</b>				
100 Personnel Services – Salaries	242,284.59	90,802.16		333,086.75
<b>Total Personnel Services – Salaries</b>	<b>\$242,284.59</b>	<b>\$90,802.16</b>		<b>\$333,086.75</b>
<b>200 Personnel Services – Employee Benefits</b>				
210 Group Insurance – Contracted Provider	85,624.49	65,099.29		150,723.78
220 Social Security Contributions	17,530.53	6,535.34		24,065.87
230 PSERS Retirement Contributions	82,584.21	30,913.25		113,497.46
250 Unemployment Compensation	71.48	26.94		98.42
260 Workers' Compensation	1,257.84	471.53		1,729.37
<b>Total Personnel Services – Employee Benefits</b>	<b>\$187,068.55</b>	<b>\$103,046.35</b>		<b>\$290,114.90</b>
<b>300 Purchased Professional and Technical Services</b>				
322 Professional Educational Services – lus	22,392.48	22,392.47		44,784.95
<b>Total Purchased Professional and Technical Services</b>	<b>\$22,392.48</b>	<b>\$22,392.47</b>		<b>\$44,784.95</b>
<b>500 Other Purchased Services</b>				
510 Student Transportation Services	518.67	344.58		863.25
561 Tuition To Other School Districts Within the State	49,931.36	605.00		50,536.36
<b>Total Other Purchased Services</b>	<b>\$50,450.03</b>	<b>\$949.58</b>		<b>\$51,399.61</b>
<b>600 Supplies</b>				
610 General Supplies	2,203.83	571.72		2,775.55
<b>Total Supplies</b>	<b>\$2,203.83</b>	<b>\$571.72</b>		<b>\$2,775.55</b>
<b>Total 1230 Emotional Support</b>	<b>\$504,399.48</b>	<b>\$217,762.28</b>		<b>\$722,161.76</b>

**General Fund (10)**

**1240 Academic Support**

	<u>Elementary</u>	<u>Secondary</u>	<u>Federal</u>	<u>Total</u>
<b>100 Personnel Services – Salaries</b>				
100 Personnel Services – Salaries	733,959.04	905,933.33	17,103.74	1,656,996.11
<b>Total Personnel Services – Salaries</b>	<b>\$733,959.04</b>	<b>\$905,933.33</b>	<b>\$17,103.74</b>	<b>\$1,656,996.11</b>
<b>200 Personnel Services – Employee Benefits</b>				
210 Group Insurance – Contracted Provider	412,690.43	388,920.00	1,503.32	803,113.75
220 Social Security Contributions	53,809.34	67,138.48	1,308.46	122,256.28
230 PSERS Retirement Contributions	247,217.57	305,148.52	5,848.71	558,214.80
250 Unemployment Compensation	169.53	212.75	88.43	470.71
260 Workers' Compensation	3,820.16	4,722.63	94.08	8,636.87
291 Other Retirement Plans	600.00	258.00		858.00
299 All Other Employee Benefits	516.00			516.00
<b>Total Personnel Services – Employee Benefits</b>	<b>\$718,823.03</b>	<b>\$766,400.38</b>	<b>\$8,843.00</b>	<b>\$1,494,066.41</b>
<b>300 Purchased Professional and Technical Services</b>				
322 Professional Educational Services – Ius	(1,286.40)			(1,286.40)
<b>Total Purchased Professional and Technical Services</b>	<b>(\$1,286.40)</b>			<b>(\$1,286.40)</b>
<b>600 Supplies</b>				
610 General Supplies	553.65	1,282.07		1,835.72
650 Supplies & Fees – Technology Related	949.00			949.00
<b>Total Supplies</b>	<b>\$1,502.65</b>	<b>\$1,282.07</b>		<b>\$2,784.72</b>
<b>700 Property</b>				
758 Capitalized Technology Software - Original		6,555.00		6,555.00
<b>Total Property</b>		<b>\$6,555.00</b>		<b>\$6,555.00</b>
<b>Total 1240 Academic Support</b>	<b>\$1,452,998.32</b>	<b>\$1,680,170.78</b>	<b>\$25,946.74</b>	<b>\$3,159,115.84</b>

**General Fund (10)**

	<u>Elementary</u>	<u>Secondary</u>	<u>Federal</u>	<u>Total</u>
<b>1241 Learning Support – Public</b>				
<b>100 Personnel Services – Salaries</b>				
100 Personnel Services – Salaries	680,606.26	892,595.11	17,103.74	1,590,305.11
<b>Total Personnel Services – Salaries</b>	<b>\$680,606.26</b>	<b>\$892,595.11</b>	<b>\$17,103.74</b>	<b>\$1,590,305.11</b>
<b>200 Personnel Services – Employee Benefits</b>				
210 Group Insurance – Contracted Provider	397,712.29	383,839.60	1,503.32	783,055.21
220 Social Security Contributions	49,866.23	66,152.85	1,308.46	117,327.54
230 PSERS Retirement Contributions	226,648.35	300,574.88	5,848.71	533,071.94
250 Unemployment Compensation	99.16	195.13	88.43	382.72
260 Workers' Compensation	3,526.85	4,649.31	94.08	8,270.24
291 Other Retirement Plans	600.00	258.00		858.00
299 All Other Employee Benefits	516.00			516.00
<b>Total Personnel Services – Employee Benefits</b>	<b>\$678,968.88</b>	<b>\$755,669.77</b>	<b>\$8,843.00</b>	<b>\$1,443,481.65</b>
<b>300 Purchased Professional and Technical Services</b>				
322 Professional Educational Services – Ius	(1,286.40)			(1,286.40)
<b>Total Purchased Professional and Technical Services</b>	<b>(\$1,286.40)</b>			<b>(\$1,286.40)</b>
<b>600 Supplies</b>				
610 General Supplies	553.65	1,282.07		1,835.72
650 Supplies & Fees – Technology Related	949.00			949.00
<b>Total Supplies</b>	<b>\$1,502.65</b>	<b>\$1,282.07</b>		<b>\$2,784.72</b>
<b>700 Property</b>				
758 Capitalized Technology Software - Original		6,555.00		6,555.00
<b>Total Property</b>		<b>\$6,555.00</b>		<b>\$6,555.00</b>
<b>Total 1241 Learning Support – Public</b>	<b>\$1,359,791.39</b>	<b>\$1,656,101.95</b>	<b>\$25,946.74</b>	<b>\$3,041,840.08</b>

**General Fund (10)**

**1243 Gifted Support**

	<u>Elementary</u>	<u>Secondary</u>	<u>Federal</u>	<u>Total</u>
<b>100 Personnel Services – Salaries</b>				
100 Personnel Services – Salaries	53,352.78	13,338.22		66,691.00
<b>Total Personnel Services – Salaries</b>	<b>\$53,352.78</b>	<b>\$13,338.22</b>		<b>\$66,691.00</b>
<b>200 Personnel Services – Employee Benefits</b>				
210 Group Insurance – Contracted Provider	14,978.14	5,080.40		20,058.54
220 Social Security Contributions	3,943.11	985.63		4,928.74
230 PSERS Retirement Contributions	20,569.22	4,573.64		25,142.86
250 Unemployment Compensation	70.37	17.62		87.99
260 Workers' Compensation	293.31	73.32		366.63
<b>Total Personnel Services – Employee Benefits</b>	<b>\$39,854.15</b>	<b>\$10,730.61</b>		<b>\$50,584.76</b>
<b>Total 1243 Gifted Support</b>	<b>\$93,206.93</b>	<b>\$24,068.83</b>		<b>\$117,275.76</b>

General Fund (10)

1260 Physical Support

300 Purchased Professional and Technical Services

330 Other Professional Services

**Total Purchased Professional and Technical Services**

**Total 1260 Physical Support**

	<u>Elementary</u>	<u>Secondary</u>	<u>Federal</u>	<u>Total</u>
	20,314.16	20,314.15		40,628.31
	<b>\$20,314.16</b>	<b>\$20,314.15</b>		<b>\$40,628.31</b>
	<b>\$20,314.16</b>	<b>\$20,314.15</b>		<b>\$40,628.31</b>

**General Fund (10)**

**1270 Multi-Handicapped Support**

	<u>Elementary</u>	<u>Secondary</u>	<u>Federal</u>	<u>Total</u>
<b>100 Personnel Services – Salaries</b>				
100 Personnel Services – Salaries		66,487.81		66,487.81
<b>Total Personnel Services – Salaries</b>		<b>\$66,487.81</b>		<b>\$66,487.81</b>
<b>200 Personnel Services – Employee Benefits</b>				
210 Group Insurance – Contracted Provider		33,374.15		33,374.15
220 Social Security Contributions		4,957.11		4,957.11
230 PSERS Retirement Contributions		22,798.63		22,798.63
250 Unemployment Compensation		170.57		170.57
260 Workers' Compensation		345.42		345.42
299 All Other Employee Benefits		1,548.00		1,548.00
<b>Total Personnel Services – Employee Benefits</b>		<b>\$63,193.88</b>		<b>\$63,193.88</b>
<b>500 Other Purchased Services</b>				
510 Student Transportation Services		69.30		69.30
<b>Total Other Purchased Services</b>		<b>\$69.30</b>		<b>\$69.30</b>
<b>600 Supplies</b>				
610 General Supplies		1,505.59		1,505.59
<b>Total Supplies</b>		<b>\$1,505.59</b>		<b>\$1,505.59</b>
<b>Total 1270 Multi-Handicapped Support</b>		<b>\$131,256.58</b>		<b>\$131,256.58</b>

**General Fund (10)**

**1290 Special Programs - Other Support**

**100 Personnel Services – Salaries**

	<u>Elementary</u>	<u>Secondary</u>	<u>Federal</u>	<u>Total</u>
100 Personnel Services – Salaries	4,896.10	4,896.10		9,792.20
<b>Total Personnel Services – Salaries</b>	<b>\$4,896.10</b>	<b>\$4,896.10</b>		<b>\$9,792.20</b>

**200 Personnel Services – Employee Benefits**

220 Social Security Contributions	374.57	374.56		749.13
230 PSERS Retirement Contributions	1,473.14	1,473.14		2,946.28
250 Unemployment Compensation	6.25	6.24		12.49
260 Workers' Compensation	25.43	25.43		50.86
<b>Total Personnel Services – Employee Benefits</b>	<b>\$1,879.39</b>	<b>\$1,879.37</b>		<b>\$3,758.76</b>

**500 Other Purchased Services**

510 Student Transportation Services	38.50	38.50		77.00
562 Tuition To Pennsylvania Charter Schools	146,834.95	146,834.94		293,669.89
567 Tuition To Approved Private Schools (APS) and PA Chartered Schools for the Deaf and Blind	661.44	661.45		1,322.89
<b>Total Other Purchased Services</b>	<b>\$147,534.89</b>	<b>\$147,534.89</b>		<b>\$295,069.78</b>

**600 Supplies**

610 General Supplies	39.31	39.30		78.61
<b>Total Supplies</b>	<b>\$39.31</b>	<b>\$39.30</b>		<b>\$78.61</b>
<b>Total 1290 Special Programs - Other Support</b>	<b>\$154,349.69</b>	<b>\$154,349.66</b>		<b>\$308,699.35</b>



**General Fund (10)**

**1300 Vocational Education**

	<u>Elementary</u>	<u>Secondary</u>	<u>Federal</u>	<u>Total</u>
<b>100 Personnel Services – Salaries</b>				
100 Personnel Services – Salaries		128,255.28		128,255.28
<b>Total Personnel Services – Salaries</b>		<b>\$128,255.28</b>		<b>\$128,255.28</b>
<b>200 Personnel Services – Employee Benefits</b>				
210 Group Insurance – Contracted Provider		35,248.92		35,248.92
220 Social Security Contributions		9,591.22		9,591.22
230 PSERS Retirement Contributions		43,875.83		43,875.83
250 Unemployment Compensation		15.62		15.62
260 Workers' Compensation		666.71		666.71
291 Other Retirement Plans		100.00		100.00
<b>Total Personnel Services – Employee Benefits</b>		<b>\$89,498.30</b>		<b>\$89,498.30</b>
<b>400 Purchased Property Services</b>				
430 Repairs and Maintenance Services		646.29		646.29
<b>Total Purchased Property Services</b>		<b>\$646.29</b>		<b>\$646.29</b>
<b>500 Other Purchased Services</b>				
510 Student Transportation Services			2,215.50	2,215.50
580 Travel		1,801.25		1,801.25
<b>Total Other Purchased Services</b>		<b>\$1,801.25</b>	<b>\$2,215.50</b>	<b>\$4,016.75</b>
<b>600 Supplies</b>				
610 General Supplies		6,117.18	8,920.49	15,037.67
<b>Total Supplies</b>		<b>\$6,117.18</b>	<b>\$8,920.49</b>	<b>\$15,037.67</b>
<b>700 Property</b>				
752 Capital Equipment – Original and Additional		10,826.84	24,900.00	35,726.84
<b>Total Property</b>		<b>\$10,826.84</b>	<b>\$24,900.00</b>	<b>\$35,726.84</b>
<b>800 Other Objects</b>				
810 Dues and Fees		1,395.00		1,395.00
<b>Total Other Objects</b>		<b>\$1,395.00</b>		<b>\$1,395.00</b>
<b>Total 1300 Vocational Education</b>		<b>\$238,540.14</b>	<b>\$36,035.99</b>	<b>\$274,576.13</b>

**General Fund (10)**

	<u>Elementary</u>	<u>Secondary</u>	<u>Federal</u>	<u>Total</u>
<b>1400 Other Instructional Programs – Elementary / Secondary</b>				
<b>100 Personnel Services – Salaries</b>				
100 Personnel Services – Salaries	440.00	36,943.02		37,383.02
<b>Total Personnel Services – Salaries</b>	<b>\$440.00</b>	<b>\$36,943.02</b>		<b>\$37,383.02</b>
<b>200 Personnel Services – Employee Benefits</b>				
210 Group Insurance – Contracted Provider		9,273.13		9,273.13
220 Social Security Contributions	33.66	2,770.96		2,804.62
230 PSERS Retirement Contributions	150.88	12,672.23		12,823.11
250 Unemployment Compensation	1.41	53.10		54.51
260 Workers' Compensation	2.42	203.13		205.55
291 Other Retirement Plans		13.00		13.00
<b>Total Personnel Services – Employee Benefits</b>	<b>\$188.37</b>	<b>\$24,985.55</b>		<b>\$25,173.92</b>
<b>300 Purchased Professional and Technical Services</b>				
330 Other Professional Services		4,761.02		4,761.02
<b>Total Purchased Professional and Technical Services</b>		<b>\$4,761.02</b>		<b>\$4,761.02</b>
<b>400 Purchased Property Services</b>				
440 Rentals		11,680.00		11,680.00
<b>Total Purchased Property Services</b>		<b>\$11,680.00</b>		<b>\$11,680.00</b>
<b>500 Other Purchased Services</b>				
561 Tuition To Other School Districts Within the State	10,209.50	43,547.25		53,756.75
580 Travel	428.80	160.08		588.88
<b>Total Other Purchased Services</b>	<b>\$10,638.30</b>	<b>\$43,707.33</b>		<b>\$54,345.63</b>
<b>600 Supplies</b>				
610 General Supplies		812.24		812.24
<b>Total Supplies</b>		<b>\$812.24</b>		<b>\$812.24</b>
<b>Total 1400 Other Instructional Programs – Elementary / Secondary</b>	<b>\$11,266.67</b>	<b>\$122,889.16</b>		<b>\$134,155.83</b>

**General Fund (10)**

**1410 Drivers' Education**

	<u>Elementary</u>	<u>Secondary</u>	<u>Federal</u>	<u>Total</u>
<b>100 Personnel Services – Salaries</b>				
100 Personnel Services – Salaries		33,529.62		33,529.62
<b>Total Personnel Services – Salaries</b>		<b>\$33,529.62</b>		<b>\$33,529.62</b>
<b>200 Personnel Services – Employee Benefits</b>				
210 Group Insurance – Contracted Provider		9,273.13		9,273.13
220 Social Security Contributions		2,509.82		2,509.82
230 PSERS Retirement Contributions		11,501.77		11,501.77
250 Unemployment Compensation		44.21		44.21
260 Workers' Compensation		184.34		184.34
291 Other Retirement Plans		13.00		13.00
<b>Total Personnel Services – Employee Benefits</b>		<b>\$23,526.27</b>		<b>\$23,526.27</b>
<b>400 Purchased Property Services</b>				
440 Rentals		11,680.00		11,680.00
<b>Total Purchased Property Services</b>		<b>\$11,680.00</b>		<b>\$11,680.00</b>
<b>600 Supplies</b>				
610 General Supplies		812.24		812.24
<b>Total Supplies</b>		<b>\$812.24</b>		<b>\$812.24</b>
<b>Total 1410 Drivers' Education</b>		<b>\$69,548.13</b>		<b>\$69,548.13</b>

**General Fund (10)**

**1430 Homebound Instruction**

	<u>Elementary</u>	<u>Secondary</u>	<u>Federal</u>	<u>Total</u>
<b>100 Personnel Services – Salaries</b>				
100 Personnel Services – Salaries	440.00	3,413.40		3,853.40
<b>Total Personnel Services – Salaries</b>	<b>\$440.00</b>	<b>\$3,413.40</b>		<b>\$3,853.40</b>
<b>200 Personnel Services – Employee Benefits</b>				
220 Social Security Contributions	33.66	261.14		294.80
230 PSERS Retirement Contributions	150.88	1,170.46		1,321.34
250 Unemployment Compensation	1.41	8.89		10.30
260 Workers' Compensation	2.42	18.79		21.21
<b>Total Personnel Services – Employee Benefits</b>	<b>\$188.37</b>	<b>\$1,459.28</b>		<b>\$1,647.65</b>
<b>500 Other Purchased Services</b>				
580 Travel	428.80	160.08		588.88
<b>Total Other Purchased Services</b>	<b>\$428.80</b>	<b>\$160.08</b>		<b>\$588.88</b>
<b>Total 1430 Homebound Instruction</b>	<b>\$1,057.17</b>	<b>\$5,032.76</b>		<b>\$6,089.93</b>

General Fund (10)

1440 Alternative Regular Education Programs

Elementary

Secondary

Federal

Total

300 Purchased Professional and Technical Services

330 Other Professional Services

4,761.02

4,761.02

**Total Purchased Professional and Technical Services**

**\$4,761.02**

**\$4,761.02**

500 Other Purchased Services

561 Tuition To Other School Districts Within the State

10,209.50

43,547.25

53,756.75

**Total Other Purchased Services**

**\$10,209.50**

**\$43,547.25**

**\$53,756.75**

**Total 1440 Alternative Regular Education Programs**

**\$10,209.50**

**\$48,308.27**

**\$58,517.77**

General Fund (10)

1441 Adjudicated / Court-Placed Programs

500 Other Purchased Services

561 Tuition To Other School Districts Within the State

Total Other Purchased Services

Total 1441 Adjudicated / Court-Placed Programs

	<u>Elementary</u>	<u>Secondary</u>	<u>Federal</u>	<u>Total</u>
561 Tuition To Other School Districts Within the State	9,740.50	12,729.24		22,469.74
<b>Total Other Purchased Services</b>	<b>\$9,740.50</b>	<b>\$12,729.24</b>		<b>\$22,469.74</b>
<b>Total 1441 Adjudicated / Court-Placed Programs</b>	<b>\$9,740.50</b>	<b>\$12,729.24</b>		<b>\$22,469.74</b>

General Fund (10)

	<u>Elementary</u>	<u>Secondary</u>	<u>Federal</u>	<u>Total</u>
<b>1442 Alternative Education Programs</b>				
<b>300 <u>Purchased Professional and Technical Services</u></b>				
330 Other Professional Services		4,761.02		4,761.02
<b>Total Purchased Professional and Technical Services</b>		<b>\$4,761.02</b>		<b>\$4,761.02</b>
<b>500 <u>Other Purchased Services</u></b>				
561 Tuition To Other School Districts Within the State	469.00	30,818.01		31,287.01
<b>Total Other Purchased Services</b>	<b>\$469.00</b>	<b>\$30,818.01</b>		<b>\$31,287.01</b>
<b>Total 1442 Alternative Education Programs</b>	<b>\$469.00</b>	<b>\$35,579.03</b>		<b>\$36,048.03</b>

**General Fund (10)**

**2000 Support Services**

**Total**

**100 Personnel Services – Salaries**

100 Personnel Services – Salaries 3,326,715.72

**Total Personnel Services – Salaries \$3,326,715.72**

**200 Personnel Services – Employee Benefits**

210 Group Insurance – Contracted Provider 998,093.38

220 Social Security Contributions 248,102.16

230 PSERS Retirement Contributions 1,134,183.36

240 Tuition Reimbursement 59,816.30

250 Unemployment Compensation 735.26

260 Workers' Compensation 17,488.50

291 Other Retirement Plans 200.00

**Total Personnel Services – Employee Benefits \$2,458,618.96**

**300 Purchased Professional and Technical Services**

310 Official / Administrative Services 29,296.91

322 Professional Educational Services – lus 23,541.91

330 Other Professional Services 216,688.92

340 Technical Services 68,855.16

350 Security / Safety Services 6,040.59

360 Employee Training and Development Services 18,269.96

390 Other Purchased Professional and Technical Services 1,204.00

**Total Purchased Professional and Technical Services \$363,897.45**

**400 Purchased Property Services**

410 Cleaning Services 41,644.01

420 Utility Services 99,199.40

430 Repairs and Maintenance Services 81,904.88

440 Rentals 28,691.99

**Total Purchased Property Services \$251,440.28**

**500 Other Purchased Services**

510 Student Transportation Services 554.75

513 Contracted Carriers 1,873,610.00

516 Student Transportation Services From the IU 16,941.51

520 Insurance – General 16,376.49

523 General Property and Liability Insurance 164,215.00

530 Communications 79,391.49

549 Other Advertising/Public Relations 21,181.10

550 Printing and Binding 22,202.00

580 Travel 30,782.19

**Total Other Purchased Services \$2,225,254.53**

**600 Supplies**

610 General Supplies 148,316.69

620 Energy 433,082.27

630 Food 5,588.54

640 Books and Periodicals 25,345.60

650 Supplies & Fees – Technology Related 212,429.25



General Fund (10)

2000 Support Services

<b>Total Supplies</b>	<b>\$824,762.35</b>
-----------------------	---------------------

700 Property

752 Capital Equipment – Original and Additional	10,060.00
756 Capitalized Technology Equipment – Original	17,815.00
758 Capitalized Technology Software - Original	3,795.00
762 Capitalized Equipment - Replacement	80,923.75

<b>Total Property</b>	<b>\$112,593.75</b>
-----------------------	---------------------

800 Other Objects

810 Dues and Fees	19,947.83
-------------------	-----------

<b>Total Other Objects</b>	<b>\$19,947.83</b>
----------------------------	--------------------

<b>Total 2000 Support Services</b>	<b>\$9,583,230.87</b>
------------------------------------	-----------------------

**General Fund (10)**

**2100 Support Services – Students**

**100 Personnel Services – Salaries**

	<u>Elementary</u>	<u>Secondary</u>	<u>Federal</u>	<u>Total</u>
100 Personnel Services – Salaries	37,635.99	278,862.50	67,941.39	561,533.52
<b>Total Personnel Services – Salaries</b>	<b>\$37,635.99</b>	<b>\$278,862.50</b>	<b>\$67,941.39</b>	<b>\$561,533.52</b>

**200 Personnel Services – Employee Benefits**

210 Group Insurance – Contracted Provider	2,500.02	105,801.09	26,909.68	181,164.44
220 Social Security Contributions	2,873.52	20,609.42	5,063.44	41,762.43
230 PSERS Retirement Contributions	13,786.48	95,582.96	22,344.35	192,439.22
250 Unemployment Compensation	(69.52)	53.08	88.00	175.64
260 Workers' Compensation	175.16	1,448.17	373.70	2,971.23
<b>Total Personnel Services – Employee Benefits</b>	<b>\$19,265.66</b>	<b>\$223,494.72</b>	<b>\$54,779.17</b>	<b>\$418,512.96</b>

**300 Purchased Professional and Technical Services**

322 Professional Educational Services – lus	11,770.96	11,770.95		23,541.91
330 Other Professional Services	8,025.00	8,025.00		16,050.00
<b>Total Purchased Professional and Technical Services</b>	<b>\$19,795.96</b>	<b>\$19,795.95</b>		<b>\$39,591.91</b>

**400 Purchased Property Services**

440 Rentals		1,062.57		1,062.57
<b>Total Purchased Property Services</b>		<b>\$1,062.57</b>		<b>\$1,062.57</b>

**500 Other Purchased Services**

510 Student Transportation Services		554.75		554.75
530 Communications		3,212.48		3,212.48
580 Travel	856.18	1,113.24		2,474.60
<b>Total Other Purchased Services</b>	<b>\$856.18</b>	<b>\$4,880.47</b>		<b>\$6,241.83</b>

**600 Supplies**

610 General Supplies	1,707.62	2,621.02		4,434.22
630 Food		350.00		350.00
640 Books and Periodicals	90.48			90.48
<b>Total Supplies</b>	<b>\$1,798.10</b>	<b>\$2,971.02</b>		<b>\$4,874.70</b>

**800 Other Objects**

810 Dues and Fees	129.00			394.00
<b>Total Other Objects</b>	<b>\$129.00</b>			<b>\$394.00</b>

**Total 2100 Support Services – Students**

	<b>\$79,480.89</b>	<b>\$531,067.23</b>	<b>\$122,720.56</b>	<b>\$1,032,211.49</b>
--	--------------------	---------------------	---------------------	-----------------------

**General Fund (10)**

**2120 Guidance Services**

	<u>Elementary</u>	<u>Secondary</u>	<u>Federal</u>	<u>Total</u>
<b>100 Personnel Services – Salaries</b>				
100 Personnel Services – Salaries	2,603.50	243,830.02	66,231.06	312,664.58
<b>Total Personnel Services – Salaries</b>	<b>\$2,603.50</b>	<b>\$243,830.02</b>	<b>\$66,231.06</b>	<b>\$312,664.58</b>
<b>200 Personnel Services – Employee Benefits</b>				
210 Group Insurance – Contracted Provider	558.00	103,859.08	24,284.52	128,701.60
220 Social Security Contributions	192.43	17,928.33	4,932.60	23,053.36
230 PSERS Retirement Contributions	1,785.48	83,581.97	21,757.88	107,125.33
250 Unemployment Compensation	(79.36)	43.24	88.00	51.88
260 Workers' Compensation	(6.79)	1,266.23	364.29	1,623.73
<b>Total Personnel Services – Employee Benefits</b>	<b>\$2,449.76</b>	<b>\$206,678.85</b>	<b>\$51,427.29</b>	<b>\$260,555.90</b>
<b>400 Purchased Property Services</b>				
440 Rentals		1,062.57		1,062.57
<b>Total Purchased Property Services</b>		<b>\$1,062.57</b>		<b>\$1,062.57</b>
<b>500 Other Purchased Services</b>				
510 Student Transportation Services		554.75		554.75
530 Communications		3,212.48		3,212.48
580 Travel	594.54	851.61		1,446.15
<b>Total Other Purchased Services</b>	<b>\$594.54</b>	<b>\$4,618.84</b>		<b>\$5,213.38</b>
<b>600 Supplies</b>				
610 General Supplies	182.61	1,096.01		1,278.62
630 Food		350.00		350.00
640 Books and Periodicals	90.48			90.48
<b>Total Supplies</b>	<b>\$273.09</b>	<b>\$1,446.01</b>		<b>\$1,719.10</b>
<b>800 Other Objects</b>				
810 Dues and Fees	129.00			129.00
<b>Total Other Objects</b>	<b>\$129.00</b>			<b>\$129.00</b>
<b>Total 2120 Guidance Services</b>	<b>\$6,049.89</b>	<b>\$457,636.29</b>	<b>\$117,658.35</b>	<b>\$581,344.53</b>

**General Fund (10)**

	<u>Elementary</u>	<u>Secondary</u>	<u>Federal</u>	<u>Total</u>
<b>2140 Psychological Services</b>				
<b>100 Personnel Services – Salaries</b>				
100 Personnel Services – Salaries	35,032.49	35,032.48		70,064.97
<b>Total Personnel Services – Salaries</b>	<b>\$35,032.49</b>	<b>\$35,032.48</b>		<b>\$70,064.97</b>
<b>200 Personnel Services – Employee Benefits</b>				
210 Group Insurance – Contracted Provider	1,942.02	1,942.01		3,884.03
220 Social Security Contributions	2,681.09	2,681.09		5,362.18
230 PSERS Retirement Contributions	12,001.00	12,000.99		24,001.99
250 Unemployment Compensation	9.84	9.84		19.68
260 Workers' Compensation	181.95	181.94		363.89
<b>Total Personnel Services – Employee Benefits</b>	<b>\$16,815.90</b>	<b>\$16,815.87</b>		<b>\$33,631.77</b>
<b>300 Purchased Professional and Technical Services</b>				
322 Professional Educational Services – lus	11,770.96	11,770.95		23,541.91
330 Other Professional Services	8,025.00	8,025.00		16,050.00
<b>Total Purchased Professional and Technical Services</b>	<b>\$19,795.96</b>	<b>\$19,795.95</b>		<b>\$39,591.91</b>
<b>500 Other Purchased Services</b>				
580 Travel	261.64	261.63		523.27
<b>Total Other Purchased Services</b>	<b>\$261.64</b>	<b>\$261.63</b>		<b>\$523.27</b>
<b>600 Supplies</b>				
610 General Supplies	1,525.01	1,525.01		3,050.02
<b>Total Supplies</b>	<b>\$1,525.01</b>	<b>\$1,525.01</b>		<b>\$3,050.02</b>
<b>Total 2140 Psychological Services</b>	<b>\$73,431.00</b>	<b>\$73,430.94</b>		<b>\$146,861.94</b>

**General Fund (10)**

**2160 Social Work Services**

**100 Personnel Services – Salaries**

100 Personnel Services – Salaries

**Total Personnel Services – Salaries**

**200 Personnel Services – Employee Benefits**

210 Group Insurance – Contracted Provider

220 Social Security Contributions

230 PSERS Retirement Contributions

250 Unemployment Compensation

260 Workers' Compensation

**Total Personnel Services – Employee Benefits**

**500 Other Purchased Services**

580 Travel

**Total Other Purchased Services**

**600 Supplies**

610 General Supplies

**Total Supplies**

**800 Other Objects**

810 Dues and Fees

**Total Other Objects**

**Total 2160 Social Work Services**

Elementary

Secondary

Federal

Total

1,710.33 178,803.97

**\$1,710.33 \$178,803.97**

2,625.16 48,578.81

130.84 13,346.89

586.47 61,311.90

104.08

9.41 983.61

**\$3,351.88 \$124,325.29**

505.18

**\$505.18**

105.58

**\$105.58**

265.00

**\$265.00**

**\$5,062.21 \$304,005.02**

**General Fund (10)**

**2200 Support Services – Instructional Staff**

	<u>Elementary</u>	<u>Secondary</u>	<u>Federal</u>	<u>Total</u>
<b>100 Personnel Services – Salaries</b>				
100 Personnel Services – Salaries	276,894.02	228,871.45	100,606.21	606,371.68
<b>Total Personnel Services – Salaries</b>	<b>\$276,894.02</b>	<b>\$228,871.45</b>	<b>\$100,606.21</b>	<b>\$606,371.68</b>
<b>200 Personnel Services – Employee Benefits</b>				
210 Group Insurance – Contracted Provider	87,767.23	38,133.26	3,125.88	129,026.37
220 Social Security Contributions	20,638.57	17,251.37	7,920.68	45,810.62
230 PSERS Retirement Contributions	92,481.56	76,461.92	34,497.79	203,441.27
240 Tuition Reimbursement	33,854.00	25,962.30		59,816.30
250 Unemployment Compensation	27.06	19.90	88.00	134.96
260 Workers' Compensation	1,467.01	1,217.84	566.59	3,251.44
<b>Total Personnel Services – Employee Benefits</b>	<b>\$236,235.43</b>	<b>\$159,046.59</b>	<b>\$46,198.94</b>	<b>\$441,480.96</b>
<b>300 Purchased Professional and Technical Services</b>				
330 Other Professional Services	2,778.26	2,521.74		5,300.00
340 Technical Services	1,472.41	1,278.63		2,751.04
360 Employee Training and Development Services	2,348.85	3,679.15	7,261.96	13,289.96
390 Other Purchased Professional and Technical Services	631.14	572.86		1,204.00
<b>Total Purchased Professional and Technical Services</b>	<b>\$7,230.66</b>	<b>\$8,052.38</b>	<b>\$7,261.96</b>	<b>\$22,545.00</b>
<b>400 Purchased Property Services</b>				
430 Repairs and Maintenance Services	10,250.57	9,244.32		19,494.89
440 Rentals	1,826.29	1,724.41		3,550.70
<b>Total Purchased Property Services</b>	<b>\$12,076.86</b>	<b>\$10,968.73</b>		<b>\$23,045.59</b>
<b>500 Other Purchased Services</b>				
530 Communications	4,955.53	4,955.51		9,911.04
580 Travel	5,621.85	8,226.79		13,848.64
<b>Total Other Purchased Services</b>	<b>\$10,577.38</b>	<b>\$13,182.30</b>		<b>\$23,759.68</b>
<b>600 Supplies</b>				
610 General Supplies	6,017.47	6,733.89		12,751.36
630 Food	1,659.72	1,491.26		3,150.98
640 Books and Periodicals	13,272.69	11,595.84		24,868.53
650 Supplies & Fees – Technology Related	94,816.53	65,654.22		160,470.75
<b>Total Supplies</b>	<b>\$115,766.41</b>	<b>\$85,475.21</b>		<b>\$201,241.62</b>
<b>700 Property</b>				
756 Capitalized Technology Equipment – Original	11,194.80	6,620.20		17,815.00
<b>Total Property</b>	<b>\$11,194.80</b>	<b>\$6,620.20</b>		<b>\$17,815.00</b>
<b>800 Other Objects</b>				
810 Dues and Fees	1,040.93	953.07		1,994.00
<b>Total Other Objects</b>	<b>\$1,040.93</b>	<b>\$953.07</b>		<b>\$1,994.00</b>
<b>Total 2200 Support Services – Instructional Staff</b>	<b>\$671,016.49</b>	<b>\$513,169.93</b>	<b>\$154,067.11</b>	<b>\$1,338,253.53</b>

**General Fund (10)**

**2220 Technology Support Services**

	<u>Elementary</u>	<u>Secondary</u>	<u>Federal</u>	<u>Total</u>
<b>100 Personnel Services – Salaries</b>				
100 Personnel Services – Salaries	82,897.17	73,292.15		156,189.32
<b>Total Personnel Services – Salaries</b>	<b>\$82,897.17</b>	<b>\$73,292.15</b>		<b>\$156,189.32</b>
<b>200 Personnel Services – Employee Benefits</b>				
210 Group Insurance – Contracted Provider	26,257.24	23,461.06		49,718.30
220 Social Security Contributions	6,157.10	5,438.91		11,596.01
230 PSERS Retirement Contributions	28,472.96	25,175.03		53,647.99
250 Unemployment Compensation	13.60	12.36		25.96
260 Workers' Compensation	430.54	380.41		810.95
<b>Total Personnel Services – Employee Benefits</b>	<b>\$61,331.44</b>	<b>\$54,467.77</b>		<b>\$115,799.21</b>
<b>300 Purchased Professional and Technical Services</b>				
330 Other Professional Services	2,778.26	2,521.74		5,300.00
340 Technical Services	1,472.41	1,278.63		2,751.04
390 Other Purchased Professional and Technical Services	631.14	572.86		1,204.00
<b>Total Purchased Professional and Technical Services</b>	<b>\$4,881.81</b>	<b>\$4,373.23</b>		<b>\$9,255.04</b>
<b>400 Purchased Property Services</b>				
430 Repairs and Maintenance Services	10,210.29	9,204.04		19,414.33
<b>Total Purchased Property Services</b>	<b>\$10,210.29</b>	<b>\$9,204.04</b>		<b>\$19,414.33</b>
<b>500 Other Purchased Services</b>				
530 Communications	1,107.70	1,107.69		2,215.39
580 Travel	1,375.19	1,248.19		2,623.38
<b>Total Other Purchased Services</b>	<b>\$2,482.89</b>	<b>\$2,355.88</b>		<b>\$4,838.77</b>
<b>600 Supplies</b>				
610 General Supplies		13.78		13.78
650 Supplies & Fees – Technology Related	70,684.78	55,714.20		126,398.98
<b>Total Supplies</b>	<b>\$70,684.78</b>	<b>\$55,727.98</b>		<b>\$126,412.76</b>
<b>700 Property</b>				
756 Capitalized Technology Equipment – Original	11,194.80	6,620.20		17,815.00
<b>Total Property</b>	<b>\$11,194.80</b>	<b>\$6,620.20</b>		<b>\$17,815.00</b>
<b>Total 2220 Technology Support Services</b>	<b>\$243,683.18</b>	<b>\$206,041.25</b>		<b>\$449,724.43</b>

**General Fund (10)**

**2250 School Library Services**

	<u>Elementary</u>	<u>Secondary</u>	<u>Federal</u>	<u>Total</u>
<b>100 Personnel Services – Salaries</b>				
100 Personnel Services – Salaries	100,342.69	60,263.38		160,606.07
<b>Total Personnel Services – Salaries</b>	<b>\$100,342.69</b>	<b>\$60,263.38</b>		<b>\$160,606.07</b>
<b>200 Personnel Services – Employee Benefits</b>				
210 Group Insurance – Contracted Provider	48,976.84	3,273.74		52,250.58
220 Social Security Contributions	7,399.55	4,595.72		11,995.27
230 PSERS Retirement Contributions	33,997.60	20,482.57		54,480.17
250 Unemployment Compensation	28.44	15.87		44.31
260 Workers' Compensation	521.39	313.15		834.54
<b>Total Personnel Services – Employee Benefits</b>	<b>\$90,923.82</b>	<b>\$28,681.05</b>		<b>\$119,604.87</b>
<b>500 Other Purchased Services</b>				
580 Travel	95.12			95.12
<b>Total Other Purchased Services</b>	<b>\$95.12</b>			<b>\$95.12</b>
<b>600 Supplies</b>				
610 General Supplies	4,489.25	5,254.83		9,744.08
640 Books and Periodicals	13,053.62	11,465.69		24,519.31
650 Supplies & Fees – Technology Related	19,806.75	5,615.02		25,421.77
<b>Total Supplies</b>	<b>\$37,349.62</b>	<b>\$22,335.54</b>		<b>\$59,685.16</b>
<b>Total 2250 School Library Services</b>	<b>\$228,711.25</b>	<b>\$111,279.97</b>		<b>\$339,991.22</b>



**General Fund (10)**

**2260 Instruction and Curriculum Development Services**

	<u>Elementary</u>	<u>Secondary</u>	<u>Federal</u>	<u>Total</u>
<b>100 Personnel Services – Salaries</b>				
100 Personnel Services – Salaries	92,758.94	92,572.71	100,606.21	285,937.86
<b>Total Personnel Services – Salaries</b>	<b>\$92,758.94</b>	<b>\$92,572.71</b>	<b>\$100,606.21</b>	<b>\$285,937.86</b>
<b>200 Personnel Services – Employee Benefits</b>				
210 Group Insurance – Contracted Provider	12,533.15	11,398.46	3,125.88	27,057.49
220 Social Security Contributions	7,013.44	7,006.88	7,920.68	21,941.00
230 PSERS Retirement Contributions	29,824.04	29,966.54	34,497.79	94,288.37
250 Unemployment Compensation	(22.86)	(24.02)	88.00	41.12
260 Workers' Compensation	510.15	509.19	566.59	1,585.93
<b>Total Personnel Services – Employee Benefits</b>	<b>\$49,857.92</b>	<b>\$48,857.05</b>	<b>\$46,198.94</b>	<b>\$144,913.91</b>
<b>400 Purchased Property Services</b>				
430 Repairs and Maintenance Services	40.28	40.28		80.56
440 Rentals	1,826.29	1,724.41		3,550.70
<b>Total Purchased Property Services</b>	<b>\$1,866.57</b>	<b>\$1,764.69</b>		<b>\$3,631.26</b>
<b>500 Other Purchased Services</b>				
530 Communications	3,847.83	3,847.82		7,695.65
580 Travel	2,545.45	2,421.40		4,966.85
<b>Total Other Purchased Services</b>	<b>\$6,393.28</b>	<b>\$6,269.22</b>		<b>\$12,662.50</b>
<b>600 Supplies</b>				
610 General Supplies	1,169.98	1,140.09		2,310.07
630 Food	27.95	10.16		38.11
640 Books and Periodicals	219.07	130.15		349.22
650 Supplies & Fees – Technology Related	4,325.00	4,325.00		8,650.00
<b>Total Supplies</b>	<b>\$5,742.00</b>	<b>\$5,605.40</b>		<b>\$11,347.40</b>
<b>800 Other Objects</b>				
810 Dues and Fees	1,040.93	953.07		1,994.00
<b>Total Other Objects</b>	<b>\$1,040.93</b>	<b>\$953.07</b>		<b>\$1,994.00</b>
<b>Total 2260 Instruction and Curriculum Development Services</b>	<b>\$157,659.64</b>	<b>\$156,022.14</b>	<b>\$146,805.15</b>	<b>\$460,486.93</b>

**General Fund (10)**

	<u>Elementary</u>	<u>Secondary</u>	<u>Federal</u>	<u>Total</u>
<b>2270 Instructional Staff Professional Development Services</b>				
<b>100 Personnel Services – Salaries</b>				
100 Personnel Services – Salaries	895.22	2,743.21		3,638.43
<b>Total Personnel Services – Salaries</b>	<b>\$895.22</b>	<b>\$2,743.21</b>		<b>\$3,638.43</b>
<b>200 Personnel Services – Employee Benefits</b>				
220 Social Security Contributions	68.48	209.86		278.34
230 PSERS Retirement Contributions	186.96	837.78		1,024.74
240 Tuition Reimbursement	33,854.00	25,962.30		59,816.30
250 Unemployment Compensation	7.88	15.69		23.57
260 Workers' Compensation	4.93	15.09		20.02
<b>Total Personnel Services – Employee Benefits</b>	<b>\$34,122.25</b>	<b>\$27,040.72</b>		<b>\$61,162.97</b>
<b>300 Purchased Professional and Technical Services</b>				
360 Employee Training and Development Services	2,348.85	3,679.15	7,261.96	13,289.96
<b>Total Purchased Professional and Technical Services</b>	<b>\$2,348.85</b>	<b>\$3,679.15</b>	<b>\$7,261.96</b>	<b>\$13,289.96</b>
<b>500 Other Purchased Services</b>				
580 Travel	1,606.09	4,557.20		6,163.29
<b>Total Other Purchased Services</b>	<b>\$1,606.09</b>	<b>\$4,557.20</b>		<b>\$6,163.29</b>
<b>600 Supplies</b>				
610 General Supplies	358.24	325.19		683.43
630 Food	1,631.77	1,481.10		3,112.87
<b>Total Supplies</b>	<b>\$1,990.01</b>	<b>\$1,806.29</b>		<b>\$3,796.30</b>
<b>Total 2270 Instructional Staff Professional Development Services</b>	<b>\$40,962.42</b>	<b>\$39,826.57</b>	<b>\$7,261.96</b>	<b>\$88,050.95</b>

**General Fund (10)**

**2300 Support Services – Administration**

	<u>Elementary</u>	<u>Secondary</u>	<u>Federal</u>	<u>Total</u>
<b>100 Personnel Services – Salaries</b>				
100 Personnel Services – Salaries	413,220.04	383,942.65		970,482.65
<b>Total Personnel Services – Salaries</b>	<b>\$413,220.04</b>	<b>\$383,942.65</b>		<b>\$970,482.65</b>
<b>200 Personnel Services – Employee Benefits</b>				
210 Group Insurance – Contracted Provider	110,939.42	62,603.45		208,767.02
220 Social Security Contributions	30,984.13	28,581.61		72,638.51
230 PSERS Retirement Contributions	142,053.13	131,885.38		333,534.02
250 Unemployment Compensation	53.31	45.61		116.22
260 Workers' Compensation	2,146.26	1,994.06		5,040.43
<b>Total Personnel Services – Employee Benefits</b>	<b>\$286,176.25</b>	<b>\$225,110.11</b>		<b>\$620,096.20</b>
<b>300 Purchased Professional and Technical Services</b>				
310 Official / Administrative Services				29,296.91
330 Other Professional Services				93,773.35
340 Technical Services				57,171.82
<b>Total Purchased Professional and Technical Services</b>				<b>\$180,242.08</b>
<b>400 Purchased Property Services</b>				
430 Repairs and Maintenance Services	388.46	393.30		781.76
440 Rentals	11,941.95	6,044.59		21,973.84
<b>Total Purchased Property Services</b>	<b>\$12,330.41</b>	<b>\$6,437.89</b>		<b>\$22,755.60</b>
<b>500 Other Purchased Services</b>				
520 Insurance – General				16,026.49
530 Communications	26,450.85	22,024.05		53,193.00
549 Other Advertising/Public Relations				21,181.10
550 Printing and Binding				22,202.00
580 Travel	2,420.20	3,896.71		9,251.44
<b>Total Other Purchased Services</b>	<b>\$28,871.05</b>	<b>\$25,920.76</b>		<b>\$121,854.03</b>
<b>600 Supplies</b>				
610 General Supplies	4,587.39	2,833.17		16,851.58
630 Food				1,909.92
640 Books and Periodicals				386.59
650 Supplies & Fees – Technology Related		1,124.00		1,124.00
<b>Total Supplies</b>	<b>\$4,587.39</b>	<b>\$3,957.17</b>		<b>\$20,272.09</b>
<b>700 Property</b>				
752 Capital Equipment – Original and Additional				10,060.00
<b>Total Property</b>				<b>\$10,060.00</b>
<b>800 Other Objects</b>				
810 Dues and Fees	1,190.00	893.00		16,189.77
<b>Total Other Objects</b>	<b>\$1,190.00</b>	<b>\$893.00</b>		<b>\$16,189.77</b>
<b>Total 2300 Support Services – Administration</b>	<b>\$746,375.14</b>	<b>\$646,261.58</b>		<b>\$1,961,952.42</b>

General Fund (10)

2310 Board Services

Elementary

Secondary

Federal

Total

200 Personnel Services – Employee Benefits

210 Group Insurance – Contracted Provider

25.00

**Total Personnel Services – Employee Benefits**

**\$25.00**

300 Purchased Professional and Technical Services

330 Other Professional Services

16,456.00

**Total Purchased Professional and Technical Services**

**\$16,456.00**

400 Purchased Property Services

440 Rentals

1,993.65

**Total Purchased Property Services**

**\$1,993.65**

500 Other Purchased Services

520 Insurance – General

15,059.00

530 Communications

2,879.25

549 Other Advertising/Public Relations

21,181.10

550 Printing and Binding

22,202.00

**Total Other Purchased Services**

**\$61,321.35**

600 Supplies

610 General Supplies

7,307.77

630 Food

445.06

**Total Supplies**

**\$7,752.83**

700 Property

752 Capital Equipment – Original and Additional

10,060.00

**Total Property**

**\$10,060.00**

800 Other Objects

810 Dues and Fees

11,251.77

**Total Other Objects**

**\$11,251.77**

**Total 2310 Board Services**

**\$108,860.60**

General Fund (10)

2330 Tax Assessment and Collection Services

Elementary

Secondary

Federal

Total

300 Purchased Professional and Technical Services

310 Official / Administrative Services

14,071.18

340 Technical Services

57,171.82

**Total Purchased Professional and Technical Services**

**\$71,243.00**

500 Other Purchased Services

520 Insurance – General

967.49

530 Communications

1,838.85

**Total Other Purchased Services**

**\$2,806.34**

600 Supplies

610 General Supplies

315.40

**Total Supplies**

**\$315.40**

**Total 2330 Tax Assessment and Collection Services**

**\$74,364.74**

General Fund (10)

2350 Legal and Accounting Services

Elementary

Secondary

Federal

Total

300 Purchased Professional and Technical Services

330 Other Professional Services

77,317.35

**Total Purchased Professional and Technical Services**

**\$77,317.35**

**Total 2350 Legal and Accounting Services**

**\$77,317.35**

**General Fund (10)**

**2360 Office of the Superintendent / Executive Director Services**

	<u>Elementary</u>	<u>Secondary</u>	<u>Federal</u>	<u>Total</u>
<b>100 Personnel Services – Salaries</b>				
100 Personnel Services – Salaries				173,319.96
<b>Total Personnel Services – Salaries</b>				<b>\$173,319.96</b>
<b>200 Personnel Services – Employee Benefits</b>				
210 Group Insurance – Contracted Provider				35,199.15
220 Social Security Contributions				13,072.77
230 PSERS Retirement Contributions				59,595.51
250 Unemployment Compensation				17.30
260 Workers' Compensation				900.11
<b>Total Personnel Services – Employee Benefits</b>				<b>\$108,784.84</b>
<b>400 Purchased Property Services</b>				
440 Rentals				1,993.65
<b>Total Purchased Property Services</b>				<b>\$1,993.65</b>
<b>500 Other Purchased Services</b>				
530 Communications	2,521.60	2,521.59		5,043.19
580 Travel				2,934.53
<b>Total Other Purchased Services</b>	<b>\$2,521.60</b>	<b>\$2,521.59</b>		<b>\$7,977.72</b>
<b>600 Supplies</b>				
610 General Supplies				1,807.85
630 Food				1,464.86
640 Books and Periodicals				386.59
<b>Total Supplies</b>				<b>\$3,659.30</b>
<b>800 Other Objects</b>				
810 Dues and Fees				2,855.00
<b>Total Other Objects</b>				<b>\$2,855.00</b>
<b>Total 2360 Office of the Superintendent / Executive Director Services</b>	<b>\$2,521.60</b>	<b>\$2,521.59</b>		<b>\$298,590.47</b>

**General Fund (10)**

**2380 Office of the Principal Services**

	<u>Elementary</u>	<u>Secondary</u>	<u>Federal</u>	<u>Total</u>
<b>100 Personnel Services – Salaries</b>				
100 Personnel Services – Salaries	413,220.04	383,942.65		797,162.69
<b>Total Personnel Services – Salaries</b>	<b>\$413,220.04</b>	<b>\$383,942.65</b>		<b>\$797,162.69</b>
<b>200 Personnel Services – Employee Benefits</b>				
210 Group Insurance – Contracted Provider	110,939.42	62,603.45		173,542.87
220 Social Security Contributions	30,984.13	28,581.61		59,565.74
230 PSERS Retirement Contributions	142,053.13	131,885.38		273,938.51
250 Unemployment Compensation	53.31	45.61		98.92
260 Workers' Compensation	2,146.26	1,994.06		4,140.32
<b>Total Personnel Services – Employee Benefits</b>	<b>\$286,176.25</b>	<b>\$225,110.11</b>		<b>\$511,286.36</b>
<b>400 Purchased Property Services</b>				
430 Repairs and Maintenance Services	388.46	393.30		781.76
440 Rentals	11,941.95	6,044.59		17,986.54
<b>Total Purchased Property Services</b>	<b>\$12,330.41</b>	<b>\$6,437.89</b>		<b>\$18,768.30</b>
<b>500 Other Purchased Services</b>				
530 Communications	23,929.25	19,502.46		43,431.71
580 Travel	2,420.20	3,896.71		6,316.91
<b>Total Other Purchased Services</b>	<b>\$26,349.45</b>	<b>\$23,399.17</b>		<b>\$49,748.62</b>
<b>600 Supplies</b>				
610 General Supplies	4,587.39	2,833.17		7,420.56
650 Supplies & Fees – Technology Related		1,124.00		1,124.00
<b>Total Supplies</b>	<b>\$4,587.39</b>	<b>\$3,957.17</b>		<b>\$8,544.56</b>
<b>800 Other Objects</b>				
810 Dues and Fees	1,190.00	893.00		2,083.00
<b>Total Other Objects</b>	<b>\$1,190.00</b>	<b>\$893.00</b>		<b>\$2,083.00</b>
<b>Total 2380 Office of the Principal Services</b>	<b>\$743,853.54</b>	<b>\$643,739.99</b>		<b>\$1,387,593.53</b>



LEA : 117596003 Northern Tioga SD

Printed 11/25/2020 8:52:22 AM

General Fund (10)

2390 Other Administration Services

Elementary

Secondary

Federal

Total

300 Purchased Professional and Technical Services

310 Official / Administrative Services

15,225.73

**Total Purchased Professional and Technical Services**

**\$15,225.73**

**Total 2390 Other Administration Services**

**\$15,225.73**

**General Fund (10)**

	<u>Elementary</u>	<u>Secondary</u>	<u>Federal</u>	<u>Total</u>
<b>2400 Support Services – Pupil Health</b>				
<b>100 Personnel Services – Salaries</b>				
100 Personnel Services – Salaries				170,768.31
<b>Total Personnel Services – Salaries</b>				<b>\$170,768.31</b>
<b>200 Personnel Services – Employee Benefits</b>				
210 Group Insurance – Contracted Provider				88,849.80
220 Social Security Contributions				12,430.88
230 PSERS Retirement Contributions				57,322.70
250 Unemployment Compensation				38.43
260 Workers' Compensation				940.59
291 Other Retirement Plans				200.00
<b>Total Personnel Services – Employee Benefits</b>				<b>\$159,782.40</b>
<b>300 Purchased Professional and Technical Services</b>				
330 Other Professional Services				2,216.00
<b>Total Purchased Professional and Technical Services</b>				<b>\$2,216.00</b>
<b>400 Purchased Property Services</b>				
430 Repairs and Maintenance Services				168.00
<b>Total Purchased Property Services</b>				<b>\$168.00</b>
<b>600 Supplies</b>				
610 General Supplies			3,300.00	9,804.87
<b>Total Supplies</b>			<b>\$3,300.00</b>	<b>\$9,804.87</b>
<b>Total 2400 Support Services – Pupil Health</b>			<b>\$3,300.00</b>	<b>\$342,739.58</b>

**General Fund (10)**

**2440 Nursing Services**

	<u>Elementary</u>	<u>Secondary</u>	<u>Federal</u>	<u>Total</u>
<b>100 Personnel Services – Salaries</b>				
100 Personnel Services – Salaries				170,768.31
<b>Total Personnel Services – Salaries</b>				<b>\$170,768.31</b>
<b>200 Personnel Services – Employee Benefits</b>				
210 Group Insurance – Contracted Provider				88,849.80
220 Social Security Contributions				12,430.88
230 PSERS Retirement Contributions				57,322.70
250 Unemployment Compensation				38.43
260 Workers' Compensation				940.59
291 Other Retirement Plans				200.00
<b>Total Personnel Services – Employee Benefits</b>				<b>\$159,782.40</b>
<b>300 Purchased Professional and Technical Services</b>				
330 Other Professional Services				2,216.00
<b>Total Purchased Professional and Technical Services</b>				<b>\$2,216.00</b>
<b>400 Purchased Property Services</b>				
430 Repairs and Maintenance Services				168.00
<b>Total Purchased Property Services</b>				<b>\$168.00</b>
<b>600 Supplies</b>				
610 General Supplies			3,300.00	9,804.87
<b>Total Supplies</b>			<b>\$3,300.00</b>	<b>\$9,804.87</b>
<b>Total 2440 Nursing Services</b>			<b>\$3,300.00</b>	<b>\$342,739.58</b>

**General Fund (10)**

**2500 Support Services – Business**

Elementary                      Secondary                      Federal                      Total

<b>100</b>	<b><u>Personnel Services – Salaries</u></b>			
	100 Personnel Services – Salaries			192,111.60
<b>Total Personnel Services – Salaries</b>				<b>\$192,111.60</b>
<b>200</b>	<b><u>Personnel Services – Employee Benefits</u></b>			
	210 Group Insurance – Contracted Provider			69,743.58
	220 Social Security Contributions			14,412.88
	230 PSERS Retirement Contributions			65,554.10
	250 Unemployment Compensation			36.62
	260 Workers' Compensation			998.02
<b>Total Personnel Services – Employee Benefits</b>				<b>\$150,745.20</b>
<b>400</b>	<b><u>Purchased Property Services</u></b>			
	440 Rentals			2,104.88
<b>Total Purchased Property Services</b>				<b>\$2,104.88</b>
<b>500</b>	<b><u>Other Purchased Services</u></b>			
	520 Insurance – General			350.00
	530 Communications			8,781.06
	580 Travel			1,652.20
<b>Total Other Purchased Services</b>				<b>\$10,783.26</b>
<b>600</b>	<b><u>Supplies</u></b>			
	610 General Supplies			4,923.54
<b>Total Supplies</b>				<b>\$4,923.54</b>
<b>700</b>	<b><u>Property</u></b>			
	758 Capitalized Technology Software - Original			3,795.00
<b>Total Property</b>				<b>\$3,795.00</b>
<b>800</b>	<b><u>Other Objects</u></b>			
	810 Dues and Fees			487.59
<b>Total Other Objects</b>				<b>\$487.59</b>
<b>Total 2500 Support Services – Business</b>				<b>\$364,951.07</b>

General Fund (10)

2510 Fiscal Services

Elementary                      Secondary                      Federal                      Total

100 Personnel Services – Salaries

100 Personnel Services – Salaries 109,339.00

**Total Personnel Services – Salaries \$109,339.00**

200 Personnel Services – Employee Benefits

210 Group Insurance – Contracted Provider 45,942.96

220 Social Security Contributions 8,276.46

230 PSERS Retirement Contributions 37,536.30

250 Unemployment Compensation 17.29

260 Workers' Compensation 567.89

**Total Personnel Services – Employee Benefits \$92,340.90**

500 Other Purchased Services

520 Insurance – General 350.00

530 Communications 690.15

580 Travel 1,652.20

**Total Other Purchased Services \$2,692.35**

600 Supplies

610 General Supplies 1,974.41

**Total Supplies \$1,974.41**

800 Other Objects

810 Dues and Fees 487.59

**Total Other Objects \$487.59**

**Total 2510 Fiscal Services \$206,834.25**

**General Fund (10)**

**2511 Supervision of Fiscal Services - Head of Component**

	<u>Elementary</u>	<u>Secondary</u>	<u>Federal</u>	<u>Total</u>
<b>100 Personnel Services – Salaries</b>				
100 Personnel Services – Salaries				72,654.72
<b>Total Personnel Services – Salaries</b>				<b>\$72,654.72</b>
<b>200 Personnel Services – Employee Benefits</b>				
210 Group Insurance – Contracted Provider				22,778.14
220 Social Security Contributions				5,511.99
230 PSERS Retirement Contributions				24,913.33
250 Unemployment Compensation				8.65
260 Workers' Compensation				377.28
<b>Total Personnel Services – Employee Benefits</b>				<b>\$53,589.39</b>
<b>500 Other Purchased Services</b>				
520 Insurance – General				350.00
530 Communications				690.15
580 Travel				1,652.20
<b>Total Other Purchased Services</b>				<b>\$2,692.35</b>
<b>600 Supplies</b>				
610 General Supplies				390.62
<b>Total Supplies</b>				<b>\$390.62</b>
<b>800 Other Objects</b>				
810 Dues and Fees				487.59
<b>Total Other Objects</b>				<b>\$487.59</b>
<b>Total 2511 Supervision of Fiscal Services - Head of Component</b>				<b>\$129,814.67</b>

General Fund (10)

2514 Payroll Services

Elementary

Secondary

Federal

Total

**100 Personnel Services – Salaries**

100 Personnel Services – Salaries

36,684.28

**Total Personnel Services – Salaries**

**\$36,684.28**

**200 Personnel Services – Employee Benefits**

210 Group Insurance – Contracted Provider

23,164.82

220 Social Security Contributions

2,764.47

230 PSERS Retirement Contributions

12,622.97

250 Unemployment Compensation

8.64

260 Workers' Compensation

190.61

**Total Personnel Services – Employee Benefits**

**\$38,751.51**

**600 Supplies**

610 General Supplies

1,583.79

**Total Supplies**

**\$1,583.79**

**Total 2514 Payroll Services**

**\$77,019.58**

**General Fund (10)**

**2590 Other Support Services – Business**

Elementary                      Secondary                      Federal                      Total

<b>100</b>	<b><u>Personnel Services – Salaries</u></b>			
	100 Personnel Services – Salaries			82,772.60
<b>Total Personnel Services – Salaries</b>				<b>\$82,772.60</b>
<b>200</b>	<b><u>Personnel Services – Employee Benefits</u></b>			
	210 Group Insurance – Contracted Provider			23,800.62
	220 Social Security Contributions			6,136.42
	230 PSERS Retirement Contributions			28,017.80
	250 Unemployment Compensation			19.33
	260 Workers' Compensation			430.13
<b>Total Personnel Services – Employee Benefits</b>				<b>\$58,404.30</b>
<b>400</b>	<b><u>Purchased Property Services</u></b>			
	440 Rentals			2,104.88
<b>Total Purchased Property Services</b>				<b>\$2,104.88</b>
<b>500</b>	<b><u>Other Purchased Services</u></b>			
	530 Communications			8,090.91
<b>Total Other Purchased Services</b>				<b>\$8,090.91</b>
<b>600</b>	<b><u>Supplies</u></b>			
	610 General Supplies			2,949.13
<b>Total Supplies</b>				<b>\$2,949.13</b>
<b>700</b>	<b><u>Property</u></b>			
	758 Capitalized Technology Software - Original			3,795.00
<b>Total Property</b>				<b>\$3,795.00</b>
<b>Total 2590 Other Support Services – Business</b>				<b>\$158,116.82</b>



**General Fund (10)**

**2600 Operation and Maintenance of Plant Services**

Elementary                      Secondary                      Federal                      Total

<b>100</b>	<b><u>Personnel Services – Salaries</u></b>			
	100 Personnel Services – Salaries			825,447.96
<b>Total Personnel Services – Salaries</b>				<b>\$825,447.96</b>
<b>200</b>	<b><u>Personnel Services – Employee Benefits</u></b>			
	210 Group Insurance – Contracted Provider			320,542.17
	220 Social Security Contributions			61,046.84
	230 PSERS Retirement Contributions			281,892.05
	250 Unemployment Compensation			233.39
	260 Workers' Compensation			4,286.79
<b>Total Personnel Services – Employee Benefits</b>				<b>\$668,001.24</b>
<b>300</b>	<b><u>Purchased Professional and Technical Services</u></b>			
	330 Other Professional Services			99,349.57
	340 Technical Services			6,689.50
	350 Security / Safety Services			6,040.59
<b>Total Purchased Professional and Technical Services</b>				<b>\$112,079.66</b>
<b>400</b>	<b><u>Purchased Property Services</u></b>			
	410 Cleaning Services			41,644.01
	420 Utility Services			99,199.40
	430 Repairs and Maintenance Services			61,460.23
<b>Total Purchased Property Services</b>				<b>\$202,303.64</b>
<b>500</b>	<b><u>Other Purchased Services</u></b>			
	523 General Property and Liability Insurance			164,215.00
	530 Communications			361.75
	580 Travel			1,385.46
<b>Total Other Purchased Services</b>				<b>\$165,962.21</b>
<b>600</b>	<b><u>Supplies</u></b>			
	610 General Supplies	46,646.63	52,152.52	98,799.15
	620 Energy			433,082.27
<b>Total Supplies</b>		<b>\$46,646.63</b>	<b>\$52,152.52</b>	<b>\$531,881.42</b>
<b>700</b>	<b><u>Property</u></b>			
	762 Capitalized Equipment - Replacement			80,923.75
<b>Total Property</b>				<b>\$80,923.75</b>
<b>800</b>	<b><u>Other Objects</u></b>			
	810 Dues and Fees			882.47
<b>Total Other Objects</b>				<b>\$882.47</b>
<b>Total 2600 Operation and Maintenance of Plant Services</b>		<b>\$46,646.63</b>	<b>\$52,152.52</b>	<b>\$2,587,482.35</b>

**General Fund (10)**

**2620 Operation of Buildings Services**

**100 Personnel Services – Salaries**

100 Personnel Services – Salaries				700,587.72
-----------------------------------	--	--	--	------------

<b>Total Personnel Services – Salaries</b>				<b>\$700,587.72</b>
--	--	--	--	---------------------

**200 Personnel Services – Employee Benefits**

210 Group Insurance – Contracted Provider				295,080.09
---	--	--	--	------------

220 Social Security Contributions				51,786.91
-----------------------------------	--	--	--	-----------

230 PSERS Retirement Contributions				239,060.81
------------------------------------	--	--	--	------------

250 Unemployment Compensation				192.92
-------------------------------	--	--	--	--------

260 Workers' Compensation				3,638.36
---------------------------	--	--	--	----------

<b>Total Personnel Services – Employee Benefits</b>				<b>\$589,759.09</b>
---	--	--	--	---------------------

**400 Purchased Property Services**

410 Cleaning Services				32,646.36
-----------------------	--	--	--	-----------

430 Repairs and Maintenance Services				6,357.93
--------------------------------------	--	--	--	----------

<b>Total Purchased Property Services</b>				<b>\$39,004.29</b>
--	--	--	--	--------------------

**500 Other Purchased Services**

523 General Property and Liability Insurance				164,215.00
--	--	--	--	------------

580 Travel				47.73
------------	--	--	--	-------

<b>Total Other Purchased Services</b>				<b>\$164,262.73</b>
---------------------------------------	--	--	--	---------------------

**600 Supplies**

610 General Supplies	26,450.34	26,663.24		53,113.58
----------------------	-----------	-----------	--	-----------

<b>Total Supplies</b>	<b>\$26,450.34</b>	<b>\$26,663.24</b>		<b>\$53,113.58</b>
-----------------------	--------------------	--------------------	--	--------------------

**700 Property**

762 Capitalized Equipment - Replacement				23,124.12
---	--	--	--	-----------

<b>Total Property</b>				<b>\$23,124.12</b>
-----------------------	--	--	--	--------------------

<b>Total 2620 Operation of Buildings Services</b>	<b>\$26,450.34</b>	<b>\$26,663.24</b>		<b>\$1,569,851.53</b>
---	--------------------	--------------------	--	-----------------------

General Fund (10)

2660 Safety and Security Services

Elementary

Secondary

Federal

Total

300 Purchased Professional and Technical Services

350 Security / Safety Services

6,040.59

**Total Purchased Professional and Technical Services**

**\$6,040.59**

**Total 2660 Safety and Security Services**

**\$6,040.59**



General Fund (10)

2700 Student Transportation Services

Elementary

Secondary

Federal

Total

300 Purchased Professional and Technical Services

340 Technical Services

1,830.54

**Total Purchased Professional and Technical Services**

**\$1,830.54**

500 Other Purchased Services

513 Contracted Carriers

1,873,610.00

516 Student Transportation Services From the IU

16,941.51

530 Communications

3,932.16

**Total Other Purchased Services**

**\$1,894,483.67**

600 Supplies

610 General Supplies

751.97

650 Supplies & Fees – Technology Related

2,194.50

**Total Supplies**

**\$2,946.47**

**Total 2700 Student Transportation Services**

**\$1,899,260.68**

General Fund (10)

2750 Nonpublic Transportation

Elementary

Secondary

Federal

Total

500 Other Purchased Services

513 Contracted Carriers

64,941.01

**Total Other Purchased Services**

**\$64,941.01**

**Total 2750 Nonpublic Transportation**

**\$64,941.01**

General Fund (10)

	<u>Elementary</u>	<u>Secondary</u>	<u>Federal</u>	<u>Total</u>
<b>2790 Other Student Transportation Services</b>				
<b>300 <u>Purchased Professional and Technical Services</u></b>				
340 Technical Services				1,830.54
<b>Total Purchased Professional and Technical Services</b>				<b>\$1,830.54</b>
<b>500 <u>Other Purchased Services</u></b>				
513 Contracted Carriers				1,808,668.99
516 Student Transportation Services From the IU				16,941.51
530 Communications				3,932.16
<b>Total Other Purchased Services</b>				<b>\$1,829,542.66</b>
<b>600 <u>Supplies</u></b>				
610 General Supplies				751.97
650 Supplies & Fees – Technology Related				2,194.50
<b>Total Supplies</b>				<b>\$2,946.47</b>
<b>Total 2790 Other Student Transportation Services</b>				<b>\$1,834,319.67</b>

General Fund (10)

2800 Support Services – Central

Elementary

Secondary

Federal

Total

300 Purchased Professional and Technical Services

340 Technical Services

412.26

360 Employee Training and Development Services

4,980.00

**Total Purchased Professional and Technical Services**

**\$5,392.26**

500 Other Purchased Services

580 Travel

2,169.85

**Total Other Purchased Services**

**\$2,169.85**

600 Supplies

630 Food

177.64

650 Supplies & Fees – Technology Related

48,640.00

**Total Supplies**

**\$48,817.64**

**Total 2800 Support Services – Central**

**\$56,379.75**



General Fund (10)

2830 Staff Services

Elementary

Secondary

Federal

Total

300 Purchased Professional and Technical Services

360 Employee Training and Development Services

4,980.00

**Total Purchased Professional and Technical Services**

**\$4,980.00**

500 Other Purchased Services

580 Travel

2,169.85

**Total Other Purchased Services**

**\$2,169.85**

600 Supplies

630 Food

177.64

**Total Supplies**

**\$177.64**

**Total 2830 Staff Services**

**\$7,327.49**

General Fund (10)

	<u>Elementary</u>	<u>Secondary</u>	<u>Federal</u>	<u>Total</u>
<b>2834 Staff Development Services – Non-Instructional, Certified Staff Only</b>				
<b>300 <u>Purchased Professional and Technical Services</u></b>				
360 Employee Training and Development Services				4,011.00
<b>Total Purchased Professional and Technical Services</b>				<b>\$4,011.00</b>
<b>500 <u>Other Purchased Services</u></b>				
580 Travel				861.12
<b>Total Other Purchased Services</b>				<b>\$861.12</b>
<b>Total 2834 Staff Development Services – Non-Instructional, Certified Staff Only</b>				<b>\$4,872.12</b>

General Fund (10)

2836 Staff Development Services – Non-Instructional, Non-Certified Staff Only

Elementary

Secondary

Federal

Total

300 Purchased Professional and Technical Services

360 Employee Training and Development Services

969.00

**Total Purchased Professional and Technical Services**

**\$969.00**

500 Other Purchased Services

580 Travel

1,308.73

**Total Other Purchased Services**

**\$1,308.73**

600 Supplies

630 Food

177.64

**Total Supplies**

**\$177.64**

**Total 2836 Staff Development Services – Non-Instructional, Non-Certified Staff Only**

**\$2,455.37**

General Fund (10)

2840 Data Processing Services

Elementary

Secondary

Federal

Total

300 Purchased Professional and Technical Services

340 Technical Services

412.26

**Total Purchased Professional and Technical Services**

**\$412.26**

600 Supplies

650 Supplies & Fees – Technology Related

48,640.00

**Total Supplies**

**\$48,640.00**

**Total 2840 Data Processing Services**

**\$49,052.26**

**General Fund (10)**

<b>3000 Operation of Non-Instructional Services</b>	<b><u>Total</u></b>
<b>100 Personnel Services – Salaries</b>	
100 Personnel Services – Salaries	290,092.38
<b>Total Personnel Services – Salaries</b>	<b>\$290,092.38</b>
<b>200 Personnel Services – Employee Benefits</b>	
220 Social Security Contributions	22,000.91
230 PSERS Retirement Contributions	81,201.00
250 Unemployment Compensation	968.30
260 Workers' Compensation	1,595.17
<b>Total Personnel Services – Employee Benefits</b>	<b>\$105,765.38</b>
<b>300 Purchased Professional and Technical Services</b>	
330 Other Professional Services	52,206.39
<b>Total Purchased Professional and Technical Services</b>	<b>\$52,206.39</b>
<b>400 Purchased Property Services</b>	
430 Repairs and Maintenance Services	1,366.75
<b>Total Purchased Property Services</b>	<b>\$1,366.75</b>
<b>500 Other Purchased Services</b>	
510 Student Transportation Services	85,572.44
530 Communications	300.00
580 Travel	4,438.47
<b>Total Other Purchased Services</b>	<b>\$90,310.91</b>
<b>600 Supplies</b>	
610 General Supplies	107,553.95
<b>Total Supplies</b>	<b>\$107,553.95</b>
<b>700 Property</b>	
752 Capital Equipment – Original and Additional	4,249.95
762 Capitalized Equipment - Replacement	5,440.00
<b>Total Property</b>	<b>\$9,689.95</b>
<b>800 Other Objects</b>	
810 Dues and Fees	7,133.00
<b>Total Other Objects</b>	<b>\$7,133.00</b>
<b>Total 3000 Operation of Non-Instructional Services</b>	<b>\$664,118.71</b>

General Fund (10)

3200 Student Activities

Elementary

Secondary

Federal

Total

100 Personnel Services – Salaries

100 Personnel Services – Salaries

285,901.38

**Total Personnel Services – Salaries**

**\$285,901.38**

200 Personnel Services – Employee Benefits

220 Social Security Contributions

21,679.97

230 PSERS Retirement Contributions

79,787.07

250 Unemployment Compensation

958.63

260 Workers' Compensation

1,572.29

**Total Personnel Services – Employee Benefits**

**\$103,997.96**

300 Purchased Professional and Technical Services

330 Other Professional Services

52,206.39

**Total Purchased Professional and Technical Services**

**\$52,206.39**

400 Purchased Property Services

430 Repairs and Maintenance Services

1,366.75

**Total Purchased Property Services**

**\$1,366.75**

500 Other Purchased Services

510 Student Transportation Services

85,572.44

580 Travel

4,438.47

**Total Other Purchased Services**

**\$90,010.91**

600 Supplies

610 General Supplies

80,773.27

**Total Supplies**

**\$80,773.27**

700 Property

752 Capital Equipment – Original and Additional

4,249.95

762 Capitalized Equipment - Replacement

5,440.00

**Total Property**

**\$9,689.95**

800 Other Objects

810 Dues and Fees

7,133.00

**Total Other Objects**

**\$7,133.00**

**Total 3200 Student Activities**

**\$631,079.61**

General Fund (10)

3300 Community Services

Elementary

Secondary

Federal

Total

100 Personnel Services – Salaries

100 Personnel Services – Salaries

4,191.00

**Total Personnel Services – Salaries**

**\$4,191.00**

200 Personnel Services – Employee Benefits

220 Social Security Contributions

320.94

230 PSERS Retirement Contributions

1,413.93

250 Unemployment Compensation

9.67

260 Workers' Compensation

22.88

**Total Personnel Services – Employee Benefits**

**\$1,767.42**

500 Other Purchased Services

530 Communications

300.00

**Total Other Purchased Services**

**\$300.00**

600 Supplies

610 General Supplies

22,945.85

26,780.68

**Total Supplies**

**\$22,945.85**

**\$26,780.68**

**Total 3300 Community Services**

**\$22,945.85**

**\$33,039.10**

**General Fund (10)**

**5000 Other Expenditures and Financing Uses**

**Total**

**800 Other Objects**

830 Interest 851,912.50

880 Refunds of Prior Years' Receipts 1,015.00

**Total Other Objects \$852,927.50**

**900 Other Uses of Funds**

910 Redemption of Principal 739,000.00

932 Capital Reserve Fund Transfers Applicable To Fund 32 500,000.00

939 Other Fund Transfers 2,106.00

**Total Other Uses of Funds \$1,241,106.00**

**Total 5000 Other Expenditures and Financing Uses \$2,094,033.50**



LEA : 117596003 Northern Tioga SD

Printed 11/25/2020 8:53:15 AM

General Fund (10)

5100 Debt Service / Other Expenditures and Financing Uses	<u>Elementary</u>	<u>Secondary</u>	<u>Federal</u>	<u>Total</u>
<b>800 Other Objects</b>				
830 Interest				851,912.50
880 Refunds of Prior Years' Receipts				1,015.00
<b>Total Other Objects</b>				<b>\$852,927.50</b>
<b>900 Other Uses of Funds</b>				
910 Redemption of Principal				739,000.00
<b>Total Other Uses of Funds</b>				<b>\$739,000.00</b>
<b>Total 5100 Debt Service / Other Expenditures and Financing Uses</b>				<b>\$1,591,927.50</b>

LEA : 117596003 Northern Tioga SD

Printed 11/25/2020 8:53:15 AM

General Fund (10)

5110 Debt Service

Elementary

Secondary

Federal

Total

800 Other Objects

830 Interest

851,912.50

**Total Other Objects**

**\$851,912.50**

900 Other Uses of Funds

910 Redemption of Principal

739,000.00

**Total Other Uses of Funds**

**\$739,000.00**

**Total 5110 Debt Service**

**\$1,590,912.50**

General Fund (10)

5130 Refund of Prior Year Revenues / Receipts

Elementary

Secondary

Federal

Total

800 Other Objects

880 Refunds of Prior Years' Receipts

1,015.00

**Total Other Objects**

**\$1,015.00**

**Total 5130 Refund of Prior Year Revenues / Receipts**

**\$1,015.00**

LEA : 117596003 Northern Tioga SD

Printed 11/25/2020 8:53:15 AM

General Fund (10)

5200 Interfund Transfers – Out

Elementary

Secondary

Federal

Total

900 Other Uses of Funds

932 Capital Reserve Fund Transfers Applicable To Fund 32

500,000.00

939 Other Fund Transfers

2,106.00

**Total Other Uses of Funds**

**\$502,106.00**

**Total 5200 Interfund Transfers – Out**

**\$502,106.00**

LEA : 117596003 Northern Tioga SD

Printed 11/25/2020 8:53:15 AM

General Fund (10)

5230 Capital Projects Fund Transfers

Elementary

Secondary

Federal

Total

900 Other Uses of Funds

932 Capital Reserve Fund Transfers Applicable To Fund 32

500,000.00

**Total Other Uses of Funds**

**\$500,000.00**

**Total 5230 Capital Projects Fund Transfers**

**\$500,000.00**

General Fund (10)

5250 Enterprise Fund Transfers

Elementary

Secondary

Federal

Total

900 Other Uses of Funds

939 Other Fund Transfers

2,106.00

**Total Other Uses of Funds**

**\$2,106.00**

**Total 5250 Enterprise Fund Transfers**

**\$2,106.00**

LEA : 117596003 Northern Tioga SD

Printed 11/25/2020 8:52:25 AM

Capital Reserve Fund - § 1431 (32)

2000 Support Services

300 Purchased Professional and Technical Services

310 Official / Administrative Services

**Total Purchased Professional and Technical Services**

**Total 2000 Support Services**

Total

4,646.57

**\$4,646.57**

**\$4,646.57**

LEA : 117596003 Northern Tioga SD

Printed 11/25/2020 8:52:25 AM

Capital Reserve Fund - § 1431 (32)

2300 Support Services – Administration

Elementary

Secondary

Federal

Total

300 Purchased Professional and Technical Services

310 Official / Administrative Services

4,646.57

**Total Purchased Professional and Technical Services**

**\$4,646.57**

**Total 2300 Support Services – Administration**

**\$4,646.57**



LEA : 117596003 Northern Tioga SD

Printed 11/25/2020 8:52:25 AM

Capital Reserve Fund - § 1431 (32)

2390 Other Administration Services

Elementary

Secondary

Federal

Total

300 Purchased Professional and Technical Services

310 Official / Administrative Services

4,646.57

**Total Purchased Professional and Technical Services**

**\$4,646.57**

**Total 2390 Other Administration Services**

**\$4,646.57**

LEA : 117596003 Northern Tioga SD

Printed 11/25/2020 8:52:49 AM

**Capital Reserve Fund - § 1431 (32)**

**4000 Facilities Acquisition, Construction and Improvement Services**

**Total**

**300 Purchased Professional and Technical Services**

330 Other Professional Services

691,631.76

**Total Purchased Professional and Technical Services**

**\$691,631.76**

**Total 4000 Facilities Acquisition, Construction and Improvement Services**

**\$691,631.76**

LEA : 117596003 Northern Tioga SD

Printed 11/25/2020 8:52:49 AM

Capital Reserve Fund - § 1431 (32)

4600 Existing Building Improvement Services

Elementary

Secondary

Federal

Total

300 Purchased Professional and Technical Services

330 Other Professional Services

691,631.76

**Total Purchased Professional and Technical Services**

**\$691,631.76**

**Total 4600 Existing Building Improvement Services**

**\$691,631.76**

LEA : 117596003 Northern Tioga SD

Printed 11/25/2020 8:53:17 AM

**Capital Reserve Fund - § 1431 (32)**

**5000 Other Expenditures and Financing Uses**

**Total**

**900 Other Uses of Funds**

910 Redemption of Principal

186,000.00

**Total Other Uses of Funds**

**\$186,000.00**

**Total 5000 Other Expenditures and Financing Uses**

**\$186,000.00**

LEA : 117596003 Northern Tioga SD

Printed 11/25/2020 8:53:17 AM

Capital Reserve Fund - § 1431 (32)

5100 Debt Service / Other Expenditures and Financing Uses

Elementary

Secondary

Federal

Total

900 Other Uses of Funds

910 Redemption of Principal

186,000.00

**Total Other Uses of Funds**

**\$186,000.00**

**Total 5100 Debt Service / Other Expenditures and Financing Uses**

**\$186,000.00**

LEA : 117596003 Northern Tioga SD

Printed 11/25/2020 8:53:17 AM

Capital Reserve Fund - § 1431 (32)

5110 Debt Service

Elementary

Secondary

Federal

Total

900 Other Uses of Funds

910 Redemption of Principal

186,000.00

**Total Other Uses of Funds**

**\$186,000.00**

**Total 5110 Debt Service**

**\$186,000.00**

LEA : 117596003 Northern Tioga SD

Printed 11/25/2020 8:52:27 AM

**Other Capital Projects Fund (39)**

**2000 Support Services**

**300 Purchased Professional and Technical Services**

310 Official / Administrative Services

**Total**

1,434.51

**Total Purchased Professional and Technical Services**

**\$1,434.51**

**Total 2000 Support Services**

**\$1,434.51**

LEA : 117596003 Northern Tioga SD

Printed 11/25/2020 8:52:27 AM

Other Capital Projects Fund (39)

2300 Support Services – Administration

Elementary

Secondary

Federal

Total

300 Purchased Professional and Technical Services

310 Official / Administrative Services

1,434.51

**Total Purchased Professional and Technical Services**

**\$1,434.51**

**Total 2300 Support Services – Administration**

**\$1,434.51**



LEA : 117596003 Northern Tioga SD

Printed 11/25/2020 8:52:27 AM

Other Capital Projects Fund (39)

2390 Other Administration Services

Elementary

Secondary

Federal

Total

300 Purchased Professional and Technical Services

310 Official / Administrative Services

1,434.51

**Total Purchased Professional and Technical Services**

**\$1,434.51**

**Total 2390 Other Administration Services**

**\$1,434.51**

**Other Capital Projects Fund (39)**

**4000 Facilities Acquisition, Construction and Improvement Services**

**Total**

**300 Purchased Professional and Technical Services**

330 Other Professional Services 6,660,073.49

**Total Purchased Professional and Technical Services \$6,660,073.49**

**500 Other Purchased Services**

520 Insurance – General 17,458.00

549 Other Advertising/Public Relations 694.76

**Total Other Purchased Services \$18,152.76**

**600 Supplies**

610 General Supplies 32,269.53

**Total Supplies \$32,269.53**

**700 Property**

752 Capital Equipment – Original and Additional 81,996.14

756 Capitalized Technology Equipment– Original 53,739.80

**Total Property \$135,735.94**

**Total 4000 Facilities Acquisition, Construction and Improvement Services \$6,846,231.72**

Other Capital Projects Fund (39)

4600 Existing Building Improvement Services

Elementary

Secondary

Federal

Total

300 Purchased Professional and Technical Services

330 Other Professional Services

6,660,073.49

**Total Purchased Professional and Technical Services**

**\$6,660,073.49**

500 Other Purchased Services

520 Insurance – General

17,458.00

549 Other Advertising/Public Relations

694.76

**Total Other Purchased Services**

**\$18,152.76**

600 Supplies

610 General Supplies

32,269.53

**Total Supplies**

**\$32,269.53**

700 Property

752 Capital Equipment – Original and Additional

81,996.14

756 Capitalized Technology Equipment – Original

53,739.80

**Total Property**

**\$135,735.94**

**Total 4600 Existing Building Improvement Services**

**\$6,846,231.72**

	<u>General Fund(10)</u>	<u>Student Sponsored Activity Fund(21)</u>	<u>Public Purpose Trust(27)</u>	<u>Other Compt Approved (28)</u>	<u>Athletic / Activity(29)</u>
<b>1000 Instruction</b>					
1100 Regular Programs - Elementary / Secondary	16,164,200.84				
1200 Special Programs - Elementary / Secondary	5,382,837.87				
1300 Vocational Education	274,576.13				
1400 Other Instructional Programs - Elementary / Secondary	134,155.83				
<b>Total Instruction</b>	<b>\$21,955,770.67</b>				
<b>2000 Support Services</b>					
2100 Support Services - Students	1,032,211.49				
2200 Support Services - Instructional Staff	1,338,253.53				
2300 Support Services - Administration	1,961,952.42				
2400 Support Services - Pupil Health	342,739.58				
2500 Support Services - Business	364,951.07				
2600 Operation and Maintenance of Plant Services	2,587,482.35				
2700 Student Transportation Services	1,899,260.68				
2800 Support Services - Central	56,379.75				
<b>Total Support Services</b>	<b>\$9,583,230.87</b>				
<b>3000 Operation of Non-Instructional Services</b>					
3200 Student Activities	631,079.61				
3300 Community Services	33,039.10				
<b>Total Operation of Non-Instructional Services</b>	<b>\$664,118.71</b>				
<b>4000 Facilities Acquisition, Construction and Improvement Services</b>					
4600 Existing Building Improvement Services					
<b>Total Facilities Acquisition, Construction and Improvement Services</b>					
<b>5000 Other Expenditures and Financing Uses</b>					
5100 Debt Service / Other Expenditures and Financing Uses	1,591,927.50				
5200 Interfund Transfers - Out	502,106.00				
<b>Total Other Expenditures and Financing Uses</b>	<b>\$2,094,033.50</b>				
<b>TOTAL ACTUAL EXPENDITURES &amp; OTHER FINANCING USES</b>	<b>\$34,297,153.75</b>				

	<u>Capital Reserve (690. 1850)(31)</u>	<u>Capital Reserve (1431)(32)</u>	<u>Other Capital Projects Fund(39)</u>	<u>Debt Service(40)</u>	<u>Permanent(90)</u>
<b>1000 Instruction</b>					
1100 Regular Programs - Elementary / Secondary					
1200 Special Programs - Elementary / Secondary					
1300 Vocational Education					
1400 Other Instructional Programs - Elementary / Secondary					
<b>Total Instruction</b>					
<b>2000 Support Services</b>					
2100 Support Services - Students					
2200 Support Services - Instructional Staff					
2300 Support Services - Administration		4,646.57	1,434.51		
2400 Support Services - Pupil Health					
2500 Support Services - Business					
2600 Operation and Maintenance of Plant Services					
2700 Student Transportation Services					
2800 Support Services - Central					
<b>Total Support Services</b>		<b>\$4,646.57</b>	<b>\$1,434.51</b>		
<b>3000 Operation of Non-Instructional Services</b>					
3200 Student Activities					
3300 Community Services					
<b>Total Operation of Non-Instructional Services</b>					
<b>4000 Facilities Acquisition, Construction and Improvement Services</b>					
4600 Existing Building Improvement Services		691,631.76	6,846,231.72		
<b>Total Facilities Acquisition, Construction and Improvement Services</b>		<b>\$691,631.76</b>	<b>\$6,846,231.72</b>		
<b>5000 Other Expenditures and Financing Uses</b>					
5100 Debt Service / Other Expenditures and Financing Uses		186,000.00			
5200 Interfund Transfers - Out					
<b>Total Other Expenditures and Financing Uses</b>		<b>\$186,000.00</b>			
<b>TOTAL ACTUAL EXPENDITURES &amp; OTHER FINANCING USES</b>		<b>\$882,278.33</b>	<b>\$6,847,666.23</b>		

**Total**

<b>1000 <u>Instruction</u></b>	
1100 Regular Programs - Elementary / Secondary	16,164,200.84
1200 Special Programs - Elementary / Secondary	5,382,837.87
1300 Vocational Education	274,576.13
1400 Other Instructional Programs - Elementary / Secondary	134,155.83

<b>Total Instruction</b>	<b>\$21,955,770.67</b>
--------------------------	------------------------

<b>2000 <u>Support Services</u></b>	
2100 Support Services - Students	1,032,211.49
2200 Support Services - Instructional Staff	1,338,253.53
2300 Support Services - Administration	1,968,033.50
2400 Support Services - Pupil Health	342,739.58
2500 Support Services - Business	364,951.07
2600 Operation and Maintenance of Plant Services	2,587,482.35
2700 Student Transportation Services	1,899,260.68
2800 Support Services - Central	56,379.75

<b>Total Support Services</b>	<b>\$9,589,311.95</b>
-------------------------------	-----------------------

<b>3000 <u>Operation of Non-Instructional Services</u></b>	
3200 Student Activities	631,079.61
3300 Community Services	33,039.10

<b>Total Operation of Non-Instructional Services</b>	<b>\$664,118.71</b>
--	---------------------

<b>4000 <u>Facilities Acquisition, Construction and Improvement Services</u></b>	
4600 Existing Building Improvement Services	7,537,863.48

<b>Total Facilities Acquisition, Construction and Improvement Services</b>	<b>\$7,537,863.48</b>
--	-----------------------

<b>5000 <u>Other Expenditures and Financing Uses</u></b>	
5100 Debt Service / Other Expenditures and Financing Uses	1,777,927.50
5200 Interfund Transfers - Out	502,106.00

<b>Total Other Expenditures and Financing Uses</b>	<b>\$2,280,033.50</b>
--	-----------------------

<b>TOTAL ACTUAL EXPENDITURES &amp; OTHER FINANCING USES</b>	<b>\$42,027,098.31</b>
---	------------------------

LEA : 117596003 Northern Tioga SD

Printed 11/25/2020 8:53:55 AM

**PSERS Salary Data (Salary Data should relate to the General Fund only)**

<b>Amount Description</b>	<b>Amount</b>
Total Salary Base for salaries subject to PSERS withholding	14,801,283.13
Total Federally Funded salaries subject to PSERS withholding	684,081.99
	<hr/>

**Title I Expenditure Data**

<b>Amount Description</b>	<b>Amount</b>
Expenditures Funded with Current Title I Funds	548,253.99
Expenditures Funded with Carry over Title I Funds	
	<hr/>
<b>Total Title I Expenditure Data</b>	<b>\$548,253.99</b>
	<hr/>

**Benefits for Staff Relative to Collective Bargaining Agreements**

	OBJECT	COVERED	NOT COVERED	TOTAL
<b>10 General Fund</b>	<b>No Self Insurance data to report</b>			
	211 Medical Insurance	4,652,082.14	106,393.92	4,758,476.06
	212 Dental Insurance	178,785.96	9,093.49	187,879.45
	215 Eye Care Insurance			
	216 Prescription Insurance			
	271 Self-Insurance Medical Benefits			
	272 Self-Insurance Dental Benefits			
	275 Self-Insurance Eye Care Benefits			
	276 Self-Insurance Prescription Benefits			
	<b>FUND TOTAL</b>	<b>\$4,830,868.10</b>	<b>\$115,487.41</b>	<b>\$4,946,355.51</b>
<b>50 Enterprise Fund</b>	<b>No Self Insurance data to report</b>			
	211 Medical Insurance	124,363.06	83,775.95	208,139.01
	212 Dental Insurance	3,621.43	2,439.54	6,060.97
	215 Eye Care Insurance			
	216 Prescription Insurance			
	271 Self-Insurance Medical Benefits			
	272 Self-Insurance Dental Benefits			
	275 Self-Insurance Eye Care Benefits			
	276 Self-Insurance Prescription Benefits			
	<b>FUND TOTAL</b>	<b>\$127,984.49</b>	<b>\$86,215.49</b>	<b>\$214,199.98</b>
<b>60 Internal Service Fund</b>	<b>No Self Insurance data to report</b>			
	211 Medical Insurance			
	212 Dental Insurance			
	215 Eye Care Insurance			
	216 Prescription Insurance			
	271 Self-Insurance Medical Benefits			
	272 Self-Insurance Dental Benefits			
	275 Self-Insurance Eye Care Benefits			
	276 Self-Insurance Prescription Benefits			
	<b>FUND TOTAL</b>			
<b>Total of All Funds</b>		<b>\$4,958,852.59</b>	<b>\$201,702.90</b>	<b>\$5,160,555.49</b>



LEA : 117596003 Northern Tioga SD

Printed 11/25/2020 8:54:08 AM

Function	Special Education (Prior Year)	Nonspecial Education (Prior Year)	Total (Prior Year)	Special Education (Current Year)	Nonspecial Education (Current Year)	Total (Current Year)
2120 Guidance Services	92,074.00	456,344.89	548,418.89	100,171.15	480,989.38	581,160.53
2140 Psychological Services	170,772.19	13,846.39	184,618.58	135,847.29	11,014.65	146,861.94
2150 Speech Pathology and Audiology Services						
2160 Social Work Services	273,455.41	22,172.06	295,627.47	281,204.64	22,800.38	304,005.02
2260 Instruction and Curriculum Development Services	270,060.98	229,491.40	499,552.38	266,804.19	193,682.74	460,486.93
2350 Legal and Accounting Services	7,728.54	38,304.83	46,033.37	13,599.73	63,717.62	77,317.35
2420 Medical Services						
2440 Nursing Services	51,101.72	253,274.63	304,376.35	59,075.96	283,663.62	342,739.58
2700 Student Transportation Services	396,011.77	1,658,833.68	2,054,845.45	323,367.53	1,558,951.64	1,882,319.17
<b>Total</b>	<b>\$1,261,204.61</b>	<b>\$2,672,267.88</b>	<b>\$3,933,472.49</b>	<b>\$1,180,070.49</b>	<b>\$2,614,820.03</b>	<b>\$3,794,890.52</b>

(PRINCIPAL AMOUNTS ONLY)

**GOVERNMENTAL FUNDS/ ACTIVITIES**

	Short-Term Borrowing	General Obligation Bonds/Notes	Authority Building Obligations	Other Long-Term Debt	Other Post-Employment Benefits (OPEB)	Compensated Absences	Net Pension Liability	Total
1. Debt at Beginning of Fiscal Year		22,565,000.00			5,042,340.00	330,730.50	52,805,000.00	80,743,070.50
2. Additional Debt Incurred During Year					228,718.00	28,191.23	1,333,051.00	1,589,960.23
3. Retirements and Repayments		925,000.00			247,489.00	2,583.84	4,736,051.00	5,911,123.84
4. Debt at End of Fiscal Year		21,640,000.00			5,023,569.00	356,337.89	49,402,000.00	76,421,906.89
5. Accreted Interest at End Of Fiscal Year								
6. Total Debt and Accreted Interest		21,640,000.00			5,023,569.00	356,337.89	49,402,000.00	76,421,906.89
7. Current Portion P&I - Due within 1 year		1,776,718.00						1,776,718.00
8. Interest Paid during current fiscal year		851,912.50						851,912.50

(PRINCIPAL AMOUNTS ONLY)

**PROPRIETARY FUNDS**

	Short-Term Borrowing	General Obligation Bonds/Notes	Authority Building Obligations	Other Long-Term Debt	Other Post-Employment Benefits (OPEB)	Compensated Absences	Net Pension Liability	Total
1. Debt at Beginning of Fiscal Year						6,511.58		6,511.58
2. Additional Debt Incurred During Year						75.00		75.00
3. Retirements and Repayments								
4. Debt at End of Fiscal Year						6,586.58		6,586.58
5. Accreted Interest at End Of Fiscal Year								
6. Total Debt and Accreted Interest						6,586.58		6,586.58
7. Current Portion P&I - Due within 1 year								
8. Interest Paid during current fiscal year								

**Total Principal and Interest Payments Made by Your School - All Funds**

Function	Fund		Principal (910)	Principal (920)	Interest (830)	Total (Principal +Interest)	Misc Other Uses (990)
5110	10	General Fund	739,000.00		851,912.50	1,590,912.50	
5110	20	Special Revenue Funds					
5110	30	Capital Projects Funds	186,000.00			186,000.00	
5110	40	Debt Service Fund					
5110	90	Permanent Fund					
5120	10	General Fund					
5120	20	Special Revenue Funds					
5120	30	Capital Projects Funds					
5120	40	Debt Service Fund					

<b>Total Debt Payments - Governmental Funds</b>			<b>\$925,000.00</b>		<b>\$851,912.50</b>	<b>\$1,776,912.50</b>	
---	--	--	---------------------	--	---------------------	-----------------------	--

Function	Fund		Principal (910)	Principal (920)	Interest (830)	Total (Principal +Interest)
5110	50	Enterprise Fund				
5110	60	Internal Service Fund				
5120	50	Enterprise Fund				
5120	60	Internal Service Fund				

<b>Total Debt Payments - Proprietary Funds</b>						
--	--	--	--	--	--	--

**Debt Details**  
**Governmental Funds/ Activities**

Debt Category	Debt Issue Date (MM/YYYY)	Principal Amounts Only				Current Portion Due Within One Year (Principal and Interest)	Interest Paid During Fiscal Year
		Debt at Beginning of Fiscal Year	Additions	Reductions / Repayments	Debt at End of Fiscal Year		
General Obligation Bonds/Notes – CIB	7/2017	18,265,000.00		360,000.00	17,905,000.00	1,082,500.00	724,700.00
General Obligation Bonds/Notes – CIB	7/2017	4,300,000.00		565,000.00	3,735,000.00	694,218.00	127,212.50
Compensated Absences		330,730.50	28,191.23	2,583.84	356,337.89		
Other Post-Employment Benefits (OPEB)		5,042,340.00	228,718.00	247,489.00	5,023,569.00		
Net Pension Liability		52,805,000.00	1,333,051.00	4,736,051.00	49,402,000.00		
<b>Totals for Debt Entered:</b>		<b>\$80,743,070.50</b>	<b>\$1,589,960.23</b>	<b>\$5,911,123.84</b>	<b>\$76,421,906.89</b>	<b>\$1,776,718.00</b>	<b>\$851,912.50</b>

**Bond Details**  
**Proprietary Funds**

Debt Category	Debt Issue Date (MM/YYYY)	Principal Amounts Only				Current Portion Due Within One Year (Principal and Interest)	Interest Paid During Fiscal Year
		Debt at Beginning of Fiscal Year	Additions	Reductions / Repayments	Debt at End of Fiscal Year		
Compensated Absences		6,511.58	75.00		6,586.58		
<b>Totals for Debt Entered:</b>		<b>\$6,511.58</b>	<b>\$75.00</b>		<b>\$6,586.58</b>		

**General Fund (10)**

**Section 1: Tuition/Purchased Services as Reported within Expenditure Detail**

	<b>Amount</b>
Tuition Reported in General Fund Expenditures 1000-560	941,281.15
Purchased Services in General Fund Expenditures 1000-594 and 1000-597	

<b>Section 1 Total</b>	<b>\$941,281.15</b>
------------------------	---------------------

**Section 2: Tuition Paid to Institution Types During Fiscal Year**

	Tuition Paid For Nonspecial Education	Tuition Paid For Special Education	Total
1 1306 Institutions			
2 Institutionalized Children's Programs	19,659.36		19,659.36
3 Juveniles Incarcerated in Adult Facilities			
4 Residential Treatment Facilities	43,957.47	3,196.36	47,153.83
5 Other Local Education Agencies	6,484.34	46,530.00	53,014.34
6 Brick and Mortar Charter Schools			
7 Cyber Charter Schools	376,747.30	293,669.89	670,417.19
8 Career and Technology Centers			
9 Approved Private Schools	1,322.89		1,322.89
10 PA Chartered Schools for the Deaf and Blind			
11 Private Residential Rehabilitative Institutions	2,121.40	6,562.00	8,683.40
12 Juvenile Detention Centers			
13 Special Program Jointures			
14 Other Tuition Not Included Elsewhere In This Section	94,520.14	46,510.00	141,030.14
<b>Section 2 Total</b>	<b>\$544,812.90</b>	<b>\$396,468.25</b>	<b>\$941,281.15</b>

LEA : 117596003 Northern Tioga SD

Printed 11/25/2020 8:54:29 AM

**Food Service / Cafeteria Operations Fund (51)**

**3000 Operation of Non-Instructional Services**

**Total**

**100 Personnel Services – Salaries**

100 Personnel Services – Salaries 506,862.00

**Total Personnel Services – Salaries \$506,862.00**

**200 Personnel Services – Employee Benefits**

210 Group Insurance – Contracted Provider 215,370.00

220 Social Security Contributions 37,360.00

230 PSERS Retirement Contributions 164,640.00

250 Unemployment Compensation 2,865.00

260 Workers' Compensation 2,788.00

**Total Personnel Services – Employee Benefits \$423,023.00**

**300 Purchased Professional and Technical Services**

340 Technical Services 2,946.00

**Total Purchased Professional and Technical Services \$2,946.00**

**400 Purchased Property Services**

430 Repairs and Maintenance Services 7,548.00

**Total Purchased Property Services \$7,548.00**

**500 Other Purchased Services**

580 Travel 3,263.00

**Total Other Purchased Services \$3,263.00**

**600 Supplies**

610 General Supplies 29,519.00

630 Food 519,575.00

**Total Supplies \$549,094.00**

**700 Property**

740 Depreciation 17,876.00

**Total Property \$17,876.00**

**Total 3000 Operation of Non-Instructional Services \$1,510,612.00**



	<u>Food Service(51)</u>	<u>Child Care Operations(52)</u>	<u>Other Enterprise(58)</u>	<u>Internal Service(60)</u>	<u>Total</u>
<b>3000 <u>Operation of Non-Instructional Services</u></b>					
3100 Food Services	1,510,612.00				1,510,612.00
<b>Total Operation of Non-Instructional Services</b>	<b>\$1,510,612.00</b>				<b>\$1,510,612.00</b>
<b>TOTAL ACTUAL EXPENDITURES &amp; OTHER FINANCING USES</b>	<b>\$1,510,612.00</b>				<b>\$1,510,612.00</b>



LEA : 117596003 Northern Tioga SD

Printed 11/25/2020 8:54:45 AM

Fund	School	School Number	Local Personnel	Local Nonpersonnel	State Personnel	State Nonpersonnel	Federal Personnel	Federal Nonpersonnel	Total	Explanation
10										
	Clark Wood El Sch	6371	1,533,502.85	296,458.08	2,667,874.83	515,721.03	248,832.48	2,334.92	5,264,724.19	
	Cowanesque Valley JSHS	4058	1,918,761.16	370,145.37	3,338,118.72	643,951.52	29,361.03	12,270.45	6,312,608.25	
	Russell B Walter El Sch	4060	1,699,624.59	289,845.45	2,956,881.30	504,251.68	531,422.18	9,333.40	5,991,358.60	
	Westfield Area El Sch	4057	1,447,037.52	268,679.39	2,517,448.83	467,463.60	263,461.86	2,193.25	4,966,284.45	
	Williamson SHS	6373	2,593,798.36	399,306.30	4,512,498.51	694,683.57	29,502.56	581.50	8,230,370.80	
<b>Total</b>			<b>9,192,724.48</b>	<b>1,624,434.59</b>	<b>15,992,822.19</b>	<b>2,826,071.40</b>	<b>1,102,580.11</b>	<b>26,713.52</b>	<b>30,765,346.29</b>	