

LEA Name : Northern Tioga SD
Address : 110 Ellison Road
Eikland, PA 16920

County : Tioga
AUN Number : 117596003
LEA Type : SD

Annual Financial Report Accuracy Certification Statement

For Fiscal Year Ending
6/30/2018

Pennsylvania Department of Education
&
Office of Comptroller Operations
PDE-2056: Intermediate Unit
PDE-2057: School District, AVTS/CTC, Charter School,
and Special Program Jointure

CERTIFICATION: By signing this page I agree that the electronic data submitted is a complete and accurate statement of the financial operations and status of the local education agency for the fiscal year. It has been prepared in accordance with generally accepted accounting principles and established Commonwealth of PA reporting guidelines.

Kathleen J. Brown
Chief School Administrator Signature

11-19-18
Date

Kathy S. Vanschaick
Board Secretary Signature

11-19-18
Date

Kathy S Vanschaick

(814)258-5644 Ext :1020

Contact Person

Contact Person Telephone Number

kathy.vanschaick@ntiogasd.org

(814)258-7083

Contact Person E-mail Address

Contact Person Fax Number

Audit Certification

Annual Financial Report:

For Fiscal Year Ending 6/30/2018

(Pursuant to PA School Code Section 218(b))

LEA Name : Northern Tioga SD

AUN Number : 117596003

County : Tioga

Audit Certification Due:
12/31/2018

This certification is applicable to the Annual Financial Report data submitted through the Consolidated Financial Reporting System on: _____

Date

Auditing Firm:

Auditor Contact Name:

Auditor Phone:

Auditor E-mail:

CERTIFICATION: By signing this page I agree that the financial statements of the school have been properly audited as noted above pursuant to Article XXIV, and in the auditor's professional opinion, the Annual Financial Report (PDE-2057) submitted on the date referenced is materially consistent with the audited financial statements.

Chief School Administrator

Board Secretary

Signature _____ Date _____

Signature _____ Date _____

Kathy S VanSchaick

(814)258-5644

Ext :1020

Contact Person

Contact Person Telephone Number

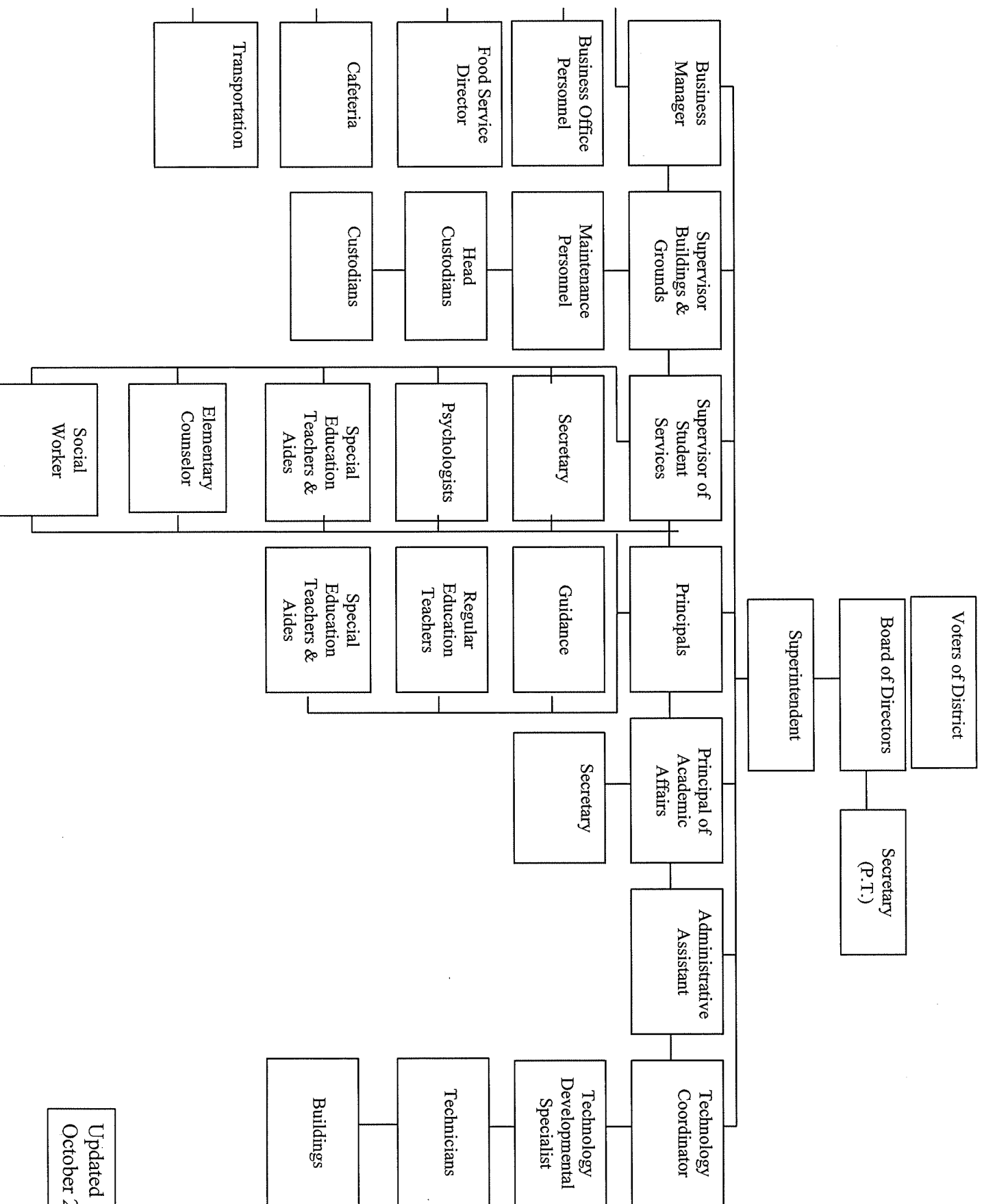
kathy.vanschack@ntiogasd.org

(814)258-7083

Contact Person E-mail Address

Contact Person Fax Number

NORTHERN TIOGA SCHOOL DISTRICT



Updated
October 2018

<u>Val Number</u>	<u>Description</u>	<u>Justification</u>
10150	NAG: Balance Sheet Govt Funds: Data has been entered for Fund 32, Line 0400 - Due to Other Funds. Since transfers out of Fund 32 are not allowed, this line should only be utilized when recording transactions related to interfund reimbursements. Please make corrections or provide brief details of the interfund reimbursement. NAG Fund 32, Line 0400: \$650,255.00	This is an interfund reimbursement. Capital Reserve expenditures are paid with General Fund check and then funds are transferred to reimburse general fund.
41120	Expenditure Detail - There is an entry in function 5110- 990 object "Other". Please explain what constitutes "Other". Expenditure 5110-990, Fund 40: \$390,848.00	This is the issuance costs of the debt service
41162	Expenditure Detail: Salaries (Object 100) and Benefits (Object 200 series): Amounts must be entered for both Salaries and Benefits. Please verify following fund and function codes: Fund 10 Function 2310;	This is a retirement contribution for health insurance for retired board secretary.
42330	Expenditure Detail: AFR amount must equal or exceed PDE FAI System amount. 1000-562, AFR Exp Detail: \$475,798.61 1000-562, PDE FAI System: \$482,421.86	Difference in payables from 16/17 to 17/18; prior year refund from Agora; and paid one charter school directly
50410	SESS - 2140 Psychological Services: SESS Schedule amounts for Special Education vary from prior year by 40% or more. Correct the data or enter a justification. SESS Schedule 2140: \$165,366.50 Prior Year SESS Schedule 2140: \$110,863.88	The district was able to hire a school psychologist at the beginning of the 2017/2018 school year into a position that had been vacant for the 2016/2017 school year.

Amounts Expressed in Whole Dollars

Assets And Deferred Outflows Of Resources

Assets

0100 Cash and Cash Equivalents	5,833,527				
0110 Investments	4,767,270				
0120 Taxes Receivable	1,001,376				
0130 Due From Other Funds	776,387				
0141 Due From Other Governments					
0142 State Revenue Receivable	1,232,437				
0143 Federal Revenue Receivable	911,596				
0145 Other Intergovernmental Revenue Receivable					
0146 Due from Primary Government					
0147 Due from Component Unit					
0150 Other Receivables					
0170 Inventories					
0180 Prepaid Expenses (Expenditures)					
0190 Other Current Assets	23,324				
Total Assets	\$14,545,917				
0910 Deferred Outflows of Resources					
Total Assets And Deferred Outflows Of Resources	\$14,545,917				

General Fund
(10)Public Purpose Trust
(27)Other Compt Approved
(28)Athletic / Activity
(29)Capital Reserve (690)
1850
(31)

Amounts Expressed in Whole Dollars	Capital Reserve (1431) (32)	Other Capital Projects Fund (39)	Debt Service (40)	Permanent (90)	Total Governmental Funds
Assets And Deferred Outflows Of Resources					
Assets					
0100 Cash and Cash Equivalents	468,867	14,566			6,316,960
0110 Investments	5,987,129	18,639,725			29,394,124
0120 Taxes Receivable					1,001,376
0130 Due From Other Funds					776,387
0141 Due From Other Governments					1,232,437
0142 State Revenue Receivable					911,596
0143 Federal Revenue Receivable					
0145 Other Intergovernmental Revenue Receivable					
0146 Due from Primary Government					
0147 Due from Component Unit					
0150 Other Receivables					
0170 Inventories					
0180 Prepaid Expenses (Expenditures)					
0190 Other Current Assets					23,324
Total Assets	\$6,455,996	\$18,654,291			\$39,656,204
0910 Deferred Outflows of Resources					
Total Assets And Deferred Outflows Of Resources	\$6,455,996	\$18,654,291			\$39,656,204

Amounts Expressed in Whole Dollars

General Fund
(10)Public Purpose Trust
(27)Other Compt. Approved
(28)Athletic / Activity
(29)Capital Reserve
(690)
(1850)
(31)

Liabilities And Deferred Inflows Of Resources And Fund Balances

Liabilities

0400 Due to Other Funds

0411 Due to Other Governments

0412 Due to Primary Government

0413 Due to Component Unit

0420 Accounts Payable

0430 Contracts Payable

0440 Current Portion of Long-Term Debt

0450 Short-Term Payables

0461 Accrued Salaries and Benefits

0462 Payroll Deductions and Withholding

0480 Unearned Revenues

0490 Other Current Liabilities

Total Liabilities

\$4,528,893

0950 Deferred Inflows of Resources

895,687

Fund Balances

0810 Nonspendable Fund Balance

0820 Restricted Fund Balance

0830 Committed Fund Balance

0840 Assigned Fund Balance

0850 Unassigned Fund Balance

Total Fund Balances

\$9,121,337

Total Liabilities, Deferred Inflows Of Resources And Fund Balances

\$14,545,917

Amounts Expressed in Whole Dollars		Capital Reserve (1431) (32)	Other Capital Projects Fund (39)	Debt Service (40)	Permanent (90)	Total Governmental Funds
Liabilities And Deferred Inflows Of Resources And Fund Balances						
Liabilities						
0400 Due to Other Funds		650,255				650,255
0411 Due to Other Governments						
0412 Due to Primary Government						
0413 Due to Component Unit						
0420 Accounts Payable		42,231				331,948
0430 Contracts Payable						
0440 Current Portion of Long-Term Debt						211,665
0450 Short-Term Payables						
0461 Accrued Salaries and Benefits						2,574,077
0462 Payroll Deductions and Withholding						1,453,434
0480 Unearned Revenues						
0490 Other Current Liabilities						
Total Liabilities		\$692,486				\$5,221,379
0950 Deferred Inflows of Resources						895,687
Fund Balances						
0810 Nonspendable Fund Balance						
0820 Restricted Fund Balance			18,654,291			18,654,291
0830 Committed Fund Balance						
0840 Assigned Fund Balance		5,763,510				12,170,850
0850 Unassigned Fund Balance						2,713,997
Total Fund Balances		\$5,763,510	\$18,654,291			\$33,539,138
Total Liabilities, Deferred Inflows Of Resources And Fund Balances		\$6,455,996	\$18,654,291			\$39,656,204

Amounts Expressed in Whole Dollars		General Fund (10)	Public Purpose Trust (27)	Other Compt Approved (28)	Athletic / Activity (29)	Capital Reserve (690) 1850 (31)
Revenues						
6000 Revenue from Local Sources		12,096,233				
7000 Revenue from State Sources		20,591,995				
8000 Revenue from Federal Sources		916,547				
Total Revenues		\$33,604,775				
Expenditures						
1000 Instruction		20,466,242				
2000 Support Services		9,366,008				
3000 Operation of Non-Instructional Services		654,666				
4000 Facilities Acquisition, Construction and Improvement Services		17,601				
5110 Debt Service		1,725,173				
5130 Refund of Prior Year Revenues / Receipts						
Total Expenditures		\$32,229,690				
Excess (Deficiency) Of Revenues Over Expenditures		\$1,375,085				
Other Financing Sources (Uses)						
9110 Face Value of Bonds Issued						
9120 Proceeds from Refunding of Bonds						
9130 Bond Premiums						
9200 Proceeds from Extended-Term Financing						
9300 Interfund Transfers - IN						
9400 Sale of or Compensation for Loss of Fixed Assets						
9710 Transfers from Component Units						
9720 Transfers from Primary Governments						
9910 Other Financing Sources Not Listed in the 9000 Series						
9990 Insurance Recoveries						
5120 Debt Service – Refunded Bonds						
5150 Bond Discounts						
5200 Interfund Transfers – Out		518,282				
5300 Transfers Out to Component Units/Primary Governments						
Total Other Financing Sources (Uses)		(\$518,282)				

Amounts Expressed in Whole Dollars	Capital Reserve (1431) (32)	Other Capital Projects Fund (39)	Debt Service (40)	Permanent (90)	Total Governmental Funds
Revenues					
6000 Revenue from Local Sources	58,599	143,660			12,298,492
7000 Revenue from State Sources					20,591,995
8000 Revenue from Federal Sources					916,547
Total Revenues	\$58,599	\$143,660			\$33,807,034
Expenditures					
1000 Instruction					20,466,242
2000 Support Services	3,031	12,370			9,381,409
3000 Operation of Non-Instructional Services					654,666
4000 Facilities Acquisition, Construction and Improvement Services	726,930	1,476,999			2,221,530
5110 Debt Service	186,000		390,848		2,302,021
5130 Refund of Prior Year Revenues / Receipts	\$915,961	\$1,489,369	\$390,848		\$35,025,868
Total Expenditures	\$915,961	\$1,489,369	\$390,848		\$35,025,868
Excess (Deficiency) Of Revenues Over Expenditures	(\$857,362)	(\$1,345,709)	(\$390,848)		(\$1,218,834)
Other Financing Sources (Uses)					
9110 Face Value of Bonds Issued			18,960,000		18,960,000
9120 Proceeds from Refunding of Bonds			5,290,000		5,290,000
9130 Bond Premiums			1,353,078		1,353,078
9200 Proceeds from Extended-Term Financing					
9300 Interfund Transfers - IN	500,000	20,000,000			20,500,000
9400 Sale of or Compensation for Loss of Fixed Assets					
9710 Transfers from Component Units					
9720 Transfers from Primary Governments					
9910 Other Financing Sources Not Listed in the 9000 Series					
9990 Insurance Recoveries					
5120 Debt Service -- Refunded Bonds			5,212,230		5,212,230
5150 Bond Discounts					
5200 Interfund Transfers -- Out			20,000,000		20,518,282
5300 Transfers Out to Component Units/Primary Governments					
Total Other Financing Sources (Uses)	\$500,000	\$20,000,000	\$390,848		\$20,372,568

Amounts Expressed in Whole Dollars		General Fund	Public Purpose Trust	Other Compt Approved	Athletic / Activity	Capital Reserve
		(10)	(27)	(28)	(29)	(690-1850-31)
Special And Extraordinary Items						
9920	Special Items – Gains					
9930	Extraordinary Items – Gains					
5520	Special Items – Losses					
5530	Extraordinary Items – Losses					
Net Change In Fund Balances		\$856,803				
Fund Balance						
0001	Fund Balance - Beginning of Fiscal Year	8,264,533				
Fund Balance - End Of Year		\$9,121,336				

Amounts Expressed in Whole Dollars	Capital Reserve (1431) (32)	Other Capital Projects Fund (39)	Debt Service (40)	Permanent (90)	Total Governmental Funds
Special And Extraordinary Items					
9920 Special Items – Gains					
9930 Extraordinary Items – Gains					
5520 Special Items – Losses					
5530 Extraordinary Items – Losses					
Net Change In Fund Balances	(\$357,362)	\$18,654,291			\$19,153,732
Fund Balance					
0001 Fund Balance - Beginning of Fiscal Year	6,120,872				14,385,405
Fund Balance - End Of Year	\$5,763,510	\$18,654,291			\$33,539,137

Amounts Expressed in Whole Dollars	Food Service (51)	Child Care Operations (52)	Other Enterprise (58)	TOTAL	Internal Service (60)
Assets And Deferred Outflows Of Resources					
Current Assets					
0100 Cash and Cash Equivalents	164,257			164,257	
0110 Investments					
0130 Due From Other Funds					
0141 Due From Other Governments					
0142 State Revenue Receivable	5,929			5,929	
0143 Federal Revenue Receivable	107,143			107,143	
0146 Due from Primary Government					
0147 Due from Component Unit					
0150 Other Receivables					
0170 Inventories	37,124			37,124	
0180 Prepaid Expenses (Expenditures)					
0190 Other Current Assets					
Total Current Assets	\$314,453			\$314,453	
Noncurrent Assets					
0211 Land					
0212 Site Improvements (Net)					
0220 Buildings and Building Improvements (Net)					
0230 Machinery, Equipment and Furniture (Net)	254,970			254,970	
0250 Construction in Progress					
0260 Long Term Prepayments					
0290 Other Noncurrent Assets					
Total Noncurrent Assets	\$254,970			\$254,970	
0910 Deferred Outflows of Resources					
Total Assets And Deferred Outflows Of Resources	\$569,423			\$569,423	

Amounts Expressed in Whole Dollars	Food Service (51)	Child Care Operations (52)	Other Enterprise (58)	TOTAL	Internal Service (60)
Liabilities And Deferred Inflows Of Resources And Net Position					
Current Liabilities					
0400 Due to Other Funds	126,132			126,132	
0411 Due to Other Governments					
0413 Due to Component Unit					
0420 Accounts Payable					
0430 Contracts Payable					
0440 Current Portion of Long-Term Debt					
0450 Short-Term Payables					
0461 Accrued Salaries and Benefits	10,446			10,446	
0462 Payroll Deductions and Withholding					
0480 Unearned Revenues	12,250			12,250	
0490 Other Current Liabilities					
Total Current Liabilities	\$148,828			\$148,828	
Noncurrent Liabilities					
0510 Bonds Payable					
0520 Extended-Term Financing Agreements Payable					
0530 Lease-Purchase Obligations					
0540 Accumulated Compensated Absences					
0550 Authority Lease Obligations					
0560 Other Post-Employment Benefits (OPEB)					
0570 Net Pension Liability					
0599 Other Noncurrent Liabilities					
Total Noncurrent Liabilities					
Total Liabilities	\$148,828			\$148,828	
0950 Deferred Inflows of Resources					
Net Position					
0791 Net Investment in Capital Assets	254,970			254,970	
0008 Restricted Net Position (0792 – 0798)					
0799 Unrestricted Net Position	165,625			165,625	
Total Net Position	\$420,595			\$420,595	
Total Liabilities And Deferred Inflows Of Resources And Net Position	\$569,423			\$569,423	

Amounts Expressed in Whole Dollars					
		<u>Food Service</u> (51)	<u>Child Care Operations</u> (52)	<u>Other Enterprise</u> (58)	<u>TOTAL</u>
					<u>Internal Service</u> (60)
Operating Revenues					
6600 Food Service Revenue		405,349			405,349
0071 Charges for Services					
0072 Other Operating Revenue					
Total Operating Revenues	\$405,349				\$405,349
Operating Expenses					
100 Personnel Services – Salaries	486,953				486,953
200 Personnel Services – Employee Benefits	402,375				402,375
300 Purchased Professional and Technical Services	2,617				2,617
400 Purchased Property Services	24,576				24,576
500 Other Purchased Services	6,463				6,463
600 Supplies	623,086				623,086
740 Depreciation	16,192				16,192
810 Dues and Fees					
890 Miscellaneous Expenditures					
Total Operating Expenses	\$1,562,262				\$1,562,262
Operating Income (Loss)	(\$1,156,913)				(\$1,156,913)
Non Operating Revenues (Expenses)					
6500 Earnings on Investments	1,396				1,396
6920 Contributions and Donations from Private Sources	39				39
6930 Gains or Losses on Sale of Fixed Assets					
6991 Refunds of a Prior Year Expenditure					
7000 Revenue from State Sources	180,853				180,853
8000 Revenue from Federal Sources	979,980				979,980
820 Claims and Judgments Against the LEA					
830 Interest					
TOTAL Non Operating Revenues (Expenses)	\$1,162,268				\$1,162,268
Income (Loss) Before Contributions And Transfers	\$5,355				\$5,355

Amounts Expressed in Whole Dollars					
		<u>Food Service</u>	<u>Child Care Operations</u>	<u>Other Enterprise</u>	<u>TOTAL</u>
		(51)	(52)	(58)	
Contributions, Transfers, and Special and Extraordinary Items					
5200	Interfund Transfers – Out				
5300	Transfers Out to Component Units/Primary Governments				
5520	Special Items – Losses				
5530	Extraordinary Items – Losses				
9300	Interfund Transfers - IN	18,282			18,282
9500	Capital Contributions				
9700	Transfers IN From Component Units/Primary Governments				
9920	Special Items – Gains				
9930	Extraordinary Items – Gains				
Change in Net Position		\$23,637			\$23,637
0002	Net Position - Beginning of Fiscal Year	396,960			396,960
0003	Accounting Changes / Residual Equity Transfers				
Net Position - End Of Year		\$420,597			\$420,597

Amounts Expressed in Whole Dollars	Food Service (51)	Child Care Operations (52)	Other Enterprise (58)	TOTAL	Internal Service(60)
Cash Flows From Operating Activities					
0011 Cash Receipts From Users	416,080			416,080	
0012 Cash Receipts From Assessments Made to Other Funds					
0013 Cash Receipts From Earnings on Investments					
0014 Cash Receipts From Other Operating Revenue					
0015 Cash Payments To Employees For Services	962,048			962,048	
0016 Cash Payments For Insurance Claims					
0017 Cash Payments To Suppliers For Goods and Services	551,959			551,959	
0018 Cash Payments For Other Operating Expenses					
Net Cash Provided By (Used For) Operating Activities	(\$1,097,927)			(\$1,097,927)	
Cash Flows From Non-Capital Financing Activities					
0021 Receipts From Local Sources - 6000	39			39	
0022 Receipts From State Sources - 7000	181,112			181,112	
0023 Receipts From Federal Sources -8000	878,818			878,818	
0024 Notes and Loans Received (Repaid)					
0025 Interest Paid on Notes/Loans - 5100-830					
0026 Operating Transfers In (Out)/Residual Equity Trans					
0027 Operating Transfers In (Out) Primary Government / Comp Unit	18,282			18,282	
0028 Receipts From Refund of Prior Year Expenditures - 6991					
0029 Special and Extraordinary Gains (losses)					
0030 Receipts from Insurance Recoveries -9990					
Net Cash Prov By (Used for) Non-Capital Financing Activities	\$1,078,251			\$1,078,251	
Cash Flows From Capital and Related Financing Activities					
0031 Payments For Fac Acq, Const, and Imp - 4000	(58,372)			(58,372)	
0032 Gain / (Loss) on Sale of Fixed Assets - 6930					
0033 Proceeds From Extended Term Financing - 9200					
0034 Principal Paid on Financing Agreements					
0035 Interest Paid on Financing Agreements - 5100-830					
0036 (Inc) Dec in Contributed Capital					
Net Cash Prov By (Used for) Capital and Related Financing Activities	(\$58,372)			(\$58,372)	
Cash Flows From Investing Activities					
0041 Earnings on Investments - 6500	1,396			1,396	
0042 Purchase of Inv Securities / Deposits to Inv Pools					
0043 Receipts From Investment Pool Withdrawals					
0044 Proceeds from Sale and Maturity of Inv Securities					

0045 Loans Received (Paid)

Net Cash Prov By (Used for) Investing Activities

\$1,396

\$1,396

LEA : 117596003 Northern Tioga SD

Printed 11/20/2018 1:01:47 PM

Page - 3 of 4

	<u>Food Service</u> (51)	<u>Child Care Operations</u> (52)	<u>Other Enterprise</u> (58)	<u>TOTAL</u>	<u>Internal Service</u> (60)
Net Increase (Decrease) in Cash Flows					
0004 Cash and Cash Equivalents Beginning of Year	(76,652)			(76,652)	
	240,908			240,908	
Cash and Cash Equivalents at Year End	\$164,256			\$164,256	
<hr/>					
Reconciliation of Operating Income (Loss) To Net Cash Provided by (Used For) Operating Activities					
0005 Operating Income (Loss) per REP	(1,156,913)			(1,156,913)	
Adjustments					
0051 Depreciation and Net Amortization	16,192			16,192	
0052 Provision for Uncollectible Accounts					
0053 Other Adjustments	108,758			108,758	
Effect of Changes in Assets, Liabilities, Deferred Outflows and Deferred Inflows					
0054 (Inc) Dec In Accounts Receivable (0120-0150)					
0055 Advances to Other Funds (0160)	(59,083)			(59,083)	
0056 (Inc) Dec in Inventories (0170)	6,549			6,549	
0057 (Inc) Dec in Prepaid Expenses (0180)					
0058 (Inc) Dec in Other Current or Noncurrent Assets					
0064 Deferred Outflows (0910)					
0059 Inc (Dec) in Accounts Payable (0400-0450)	(10,518)			(10,518)	
0060 Inc (Dec) in Accrued Salaries/Benefits (0461)	(3,119)			(3,119)	
0065 Inc (Dec) in Net Pension Liabilities (0570)					
0066 Inc (Dec) in Other Postemp Benefit Oblig (0560)					
0061 Inc (Dec) in Payroll Deductions/Withholding (0462)					
0062 Inc (Dec) in Unearned Revenue (0480)	212			212	
0063 Inc (Dec) in Other Current or Noncurrent Liabilities					
0067 Deferred Inflows (0950)					
Total Adjustments	\$58,991			\$58,991	
Cash Provided By (Used for) Total	(\$1,097,922)			(\$1,097,922)	

COMBINED STATEMENT OF CASH FLOWS

SCHEDULE OF NONCASH INVESTING, CAPITAL, AND FINANCING ACTIVITIES

Explanation of Transaction and Balance Sheet Effect	Amount
Total	

LEA : 117596003 Northern Tioga SD

Printed 11/20/2018 1:01:48 PM

Amounts Expressed in Whole Dollars

Private Purpose Trust
(71)

Investment Trust
(72)

Pension Trust
(73)

Activity
(81)

Assets And Deferred Outflows Of Resources

Assets

0100 Cash and Cash Equivalents	48,733			214,155
0110 Investments		131,704		
0130 Due From Other Funds				
0147 Due from Component Unit				
0150 Other Receivables				
0170 Inventories				
0180 Prepaid Expenses (Expenditures)				
0190 Other Current Assets				
0220 Buildings and Building Improvements (Net)				
0230 Machinery, Equipment and Furniture (Net)				

Total Assets	\$180,437			\$214,155
--------------	-----------	--	--	-----------

0910 Deferred Outflows of Resources

Total Assets And Deferred Outflows Of Resources	\$180,437			\$214,155
---	-----------	--	--	-----------

Amounts Expressed in Whole Dollars				
Assets And Deferred Outflows Of Resources				
Assets				
0100 Cash and Cash Equivalents		109,251		372,139
0110 Investments		967,579		1,099,283
0130 Due From Other Funds				
0147 Due from Component Unit				
0150 Other Receivables				
0170 Inventories				
0180 Prepaid Expenses (Expenditures)				
0190 Other Current Assets				
0220 Buildings and Building Improvements (Net)				
0230 Machinery, Equipment and Furniture (Net)				
Total Assets		\$1,076,830		\$1,471,422
0910 Deferred Outflows of Resources				
Total Assets And Deferred Outflows Of Resources		\$1,076,830		\$1,471,422

LEA : 117596003 Northern Tioga SD

Printed 11/20/2018 1:01:48 PM

Amounts Expressed in Whole Dollars

Private Purpose Trust
(71)

Investment Trust
(72)

Pension Trust
(73)

Activity
(81)

Liabilities, Deferred Inflows Of Resources And Net Position

Liabilities

0400 Due to Other Funds

0411 Due to Other Governments

0412 Due to Primary Government

0413 Due to Component Unit

0420 Accounts Payable

0430 Contracts Payable

0450 Short-Term Payables

0461 Accrued Salaries and Benefits

0462 Payroll Deductions and Withholding

0480 Unearned Revenues

0490 Other Current Liabilities

214,155

Total Liabilities

\$214,155

0950 Deferred Inflows of Resources

Net Position

0791 Net Investment in Capital Assets

0009 Restricted Net Position (0792 - 0798)

180,437

0799 Unrestricted Net Position

Total Net Position

\$180,437

Total Liabilities, Deferred Inflows Of Resources And Net Position

\$180,437

\$214,155

LEA : 117596003 Northern Tioga SD

Printed 11/20/2018 1:01:48 PM

Amounts Expressed in Whole Dollars				
	Other Agency (89)	Discrete Component Units (98)	Discrete Component Units (99)	Total Fiduciary Funds
Liabilities, Deferred Inflows Of Resources And Net Position				
Liabilities				
0400 Due to Other Funds				
0411 Due to Other Governments				
0412 Due to Primary Government				
0413 Due to Component Unit				
0420 Accounts Payable	18,779			18,779
0430 Contracts Payable				
0450 Short-Term Payables				
0461 Accrued Salaries and Benefits				
0462 Payroll Deductions and Withholding				
0480 Unearned Revenues				
0490 Other Current Liabilities	1,058,051			1,272,206
Total Liabilities	\$1,076,830			\$1,290,985
Deferred Inflows of Resources				
0950 Deferred Inflows of Resources				
Net Position				
0791 Net Investment in Capital Assets				180,437
0009 Restricted Net Position (0792 – 0798)				
0799 Unrestricted Net Position				
Total Net Position				\$180,437
Total Liabilities, Deferred Inflows Of Resources And Net Position	\$1,076,830			\$1,471,422

Amounts Expressed in Whole Dollars	Private Purpose Trust	Investment Trust	Pension Trust	Discrete Component	Discrete Component	Total Fiduciary
	(71)	(72)	(73)	Units (98)	Units (99)	Funds
Additions						
0091 Gifts and Contributions		11,507				11,507
0092 Other Additions		729				729
Deductions						
0093 Scholarships Awarded		5,820				5,820
0094 Other Deductions		60				60
Change in Net Position		\$6,356				\$6,356
0006 Net Position – Beginning of Fiscal Year		174,078				174,078
0007 Net Position Held in Trust for Pension Benefits						
Net Position - End of Fiscal Year		\$180,434				\$180,434

	Revenue Reported In Current Year	Current Year Tax Accrual	Prior Year Tax Accrual	Taxes Collected In Current Year
Revenue from Local Sources				
6111 Current Real Estate Taxes	7,769,844.46			7,769,844.46
6112 Interim Real Estate Taxes	50,552.62			50,552.62
6113 Public Utility Realty Taxes	10,900.23			10,900.23
6114 Payments in Lieu of Current Taxes - State / Local	36,930.96			36,930.96
6143 Current Act 511 Local Services Taxes	19,378.06	423.86	259.43	19,213.63
6151 Current Act 511 Earned Income Taxes	2,246,697.23	12,833.66	15,638.83	2,249,502.40
6153 Current Act 511 Real Estate Transfer Taxes	195,639.15			195,639.15
6411 Delinquent Real Estate Taxes	1,094,816.80	92,432.01	109,850.74	1,112,235.53
6500 Earnings on Investments	106,968.82			
6832 Federal IDEA Revenue Received as Pass Through	417,736.05			
6910 Rentals	7,574.60			
6920 Contributions and Donations from Private Sources	83,179.36			
6942 Summer School Tuition	2,088.00			
6949 Other Tuition from Patrons	4,500.00			
6991 Refunds of a Prior Year Expenditure	9,727.95			
6999 Other Revenues Not Specified Above	39,698.44			
TOTAL Revenue from Local Sources	\$12,096,232.73	\$105,689.53	\$125,749.00	\$11,444,818.98

Revenue from State Sources		Revenue Reported In Current Year
7110 Basic Education Funding		12,495,174.06
7160 Tuition for Orphans Subsidy		12,228.70
7220 Vocational Education		62,533.56
7240 Driver Education - Student		2,940.00
7271 Special Education funds for School-Aged Pupils		1,670,723.66
7311 Pupil Transportation Subsidy		1,463,451.61
7312 Nonpublic and Charter School Pupil Transportation Subsidy		18,480.00
7320 Rental and Sinking Fund Payments / Building Reimbursement Subsidy		183,614.22
7330 Health Services (Medical, Dental, Nurse, Act 25)		39,193.61
7340 State Property Tax Reduction Allocation		476,427.73
7360 Safe Schools		19,800.00
7505 Ready to Learn Block Grant		446,252.00
7509 Supplemental Equipment Grants		5,812.41
7810 State Share of Social Security and Medicare Taxes		653,373.92
7820 State Share of Retirement Contributions		3,039,989.45
TOTAL Revenue from State Sources		\$20,591,994.93

**Revenue Reported
In Current Year**

Revenue from Federal Sources

8514 NCLB, Title I - Improving the Academic Achievement of the Disadvantaged	642,137.52		
8515 NCLB, Title II - Preparing, Training and Recruiting High Quality Teachers and Principals	99,851.52		
8517 NCLB, Title IV - 21st Century Schools	12,549.00		
8519 NCLB, Title VI - Flexibility and Accountability	36,035.00		
8521 Vocational Education - Operating Expenditures	53,507.62		
8810 School-Based Access Medicaid Reimbursement Program (SBAP) Reimbursements (Access)	56,778.90		
8820 Medical Assistance Reimbursement for Administrative Claiming (Quarterly) Program	15,687.45		
TOTAL Revenue from Federal Sources	\$916,547.01		
TOTAL FROM ALL SOURCES	\$33,604,774.67	\$105,689.53	\$125,749.00
			\$11,444,818.98

Revenue from Local Sources	12,096,232.73
Revenue from State Sources	20,591,994.93
Revenue from Federal Sources	916,547.01
Other Financing Sources	
TOTAL FROM ALL SOURCES	\$33,604,774.67

General Fund (10)

1000 Instruction

100 Personnel Services – Salaries

	11,060,242.32
Total	

	\$11,060,242.32
--	------------------------

200 Personnel Services – Employee Benefits

210 Group Insurance – Contracted Provider	3,212,540.77
220 Social Security Contributions	829,196.36
230 PSERS Retirement Contributions	3,603,093.33
250 Unemployment Compensation	3,172.06
260 Workers' Compensation	57,585.31
291 Other Retirement Plans	12,171.00
299 All Other Employee Benefits	26,703.00
	\$7,744,461.83

Total Personnel Services – Employee Benefits

300 Purchased Professional and Technical Services

322 Professional Educational Services – Ius	182,040.90
329 Professional Educational Services – Other	45,586.04
330 Other Professional Services	72,370.45
	\$299,997.39

Total Purchased Professional and Technical Services

400 Purchased Property Services

430 Repairs and Maintenance Services	9,959.51
440 Rentals	65,139.25
	\$75,098.76

Total Purchased Property Services

500 Other Purchased Services

510 Student Transportation Services	15,833.05
520 Insurance – General	2,065.72
530 Communications	26,275.19
550 Printing and Binding	4,241.78
561 Tuition To Other School Districts Within the State	54,100.36
562 Tuition To Pennsylvania Charter Schools	475,798.61
563 Tuition To Nonpublic Schools	2,210.00
564 Tuition To Career and Technology Centers	23,735.18
567 Tuition To Approved Private Schools (APS) and PA Chartered Schools for the Deaf and Blind	13,730.48
568 Tuition To Private Residential Rehabilitative Institutions (PRRI) [In-State] and Detention Centers	3,707.74
569 Tuition – Other	112,291.43
580 Travel	6,253.45
	\$740,242.99

Total Other Purchased Services

600 Supplies

610 General Supplies	317,959.73
630 Food	3,318.61
640 Books and Periodicals	91,204.33
650 Supplies & Fees – Technology Related	47,951.21
	\$460,433.88

Total Supplies

700 Property

752 Capital Equipment – Original and Additional	15,795.28
---	-----------

LEA : 117596003 Northern Tioga SD

Printed 11/20/2018 1:01:52 PM

General Fund (10)

1000 Instruction

Total

700 Property

756 Capitalized Technology Hardware and Equipment -- Original

26,780.00

758 Capitalized Technology Software - Original

6,180.00

762 Capitalized Equipment - Replacement

22,853.20

768 Capitalized Technology Software - Replacement

12,360.00

Total Property

\$83,968.48

800 Other Objects

810 Dues and Fees

1,796.25

Total Other Objects

\$1,796.25

Total 1000 Instruction

\$20,466,241.90

General Fund (10)

1100 Regular Programs – Elementary / Secondary

100 Personnel Services – Salaries

100 Personnel Services – Salaries

	Elementary	Secondary	Federal	Total
	4,045,550.54	3,860,521.41	373,469.11	8,279,541.06
Total Personnel Services – Salaries	\$4,045,550.54	\$3,860,521.41	\$373,469.11	\$8,279,541.06

200 Personnel Services – Employee Benefits

210 Group Insurance – Contracted Provider
 220 Social Security Contributions
 230 PSERS Retirement Contributions
 250 Unemployment Compensation
 260 Workers' Compensation
 291 Other Retirement Plans
 299 All Other Employee Benefits

	1,082,650.52	993,628.89	91,261.99	2,107,541.40
	306,556.37	287,732.79	28,106.27	622,395.43
	1,316,109.89	1,262,369.16	121,873.59	2,700,352.64
	677.41	611.48	559.74	1,848.63
	21,010.94	20,007.55	2,070.73	43,089.22
	5,443.00	3,881.00	666.00	9,980.00
	15,609.00	6,450.00		22,059.00
Total Personnel Services – Employee Benefits	\$2,748,057.13	\$2,514,680.87	\$244,528.32	\$5,507,266.32

300 Purchased Professional and Technical Services

329 Professional Educational Services – Other

	45,586.04			45,586.04
Total Purchased Professional and Technical Services	\$45,586.04			\$45,586.04

400 Purchased Property Services

430 Repairs and Maintenance Services
 440 Rentals

	2,900.79	1,850.24		4,751.03
	32,368.16	21,091.09		53,459.25
Total Purchased Property Services	\$35,268.95	\$22,941.33		\$58,210.28

500 Other Purchased Services

510 Student Transportation Services
 530 Communications
 550 Printing and Binding
 561 Tuition To Other School Districts Within the State
 562 Tuition To Pennsylvania Charter Schools
 568 Tuition To Private Residential Rehabilitative Institutions (PRRI) [In-State] and Detention Centers
 569 Tuition – Other
 580 Travel

	3,477.60	5,236.97		8,714.57
	13,773.42	12,501.77		26,275.19
		4,241.78		4,241.78
		14,134.03		14,134.03
	145,965.74	149,060.94		295,026.68
	1,853.87	1,853.87		3,707.74
	28,248.09	42,024.34		70,272.43
		227.29		227.29
Total Other Purchased Services	\$193,318.72	\$229,280.99		\$422,599.71

600 Supplies

610 General Supplies
 630 Food
 640 Books and Periodicals
 650 Supplies & Fees – Technology Related

	104,959.74	73,112.33	105,945.49	284,017.56
	101.20	1,790.81		1,892.01
	29,868.12	60,704.98		90,573.10
	23,155.90	5,232.88	7,151.03	35,539.81
Total Supplies	\$158,084.96	\$140,841.00	\$113,096.52	\$412,022.48

700 Property

756 Capitalized Technology Hardware and Equipment – Original
 758 Capitalized Technology Software - Original
 762 Capitalized Equipment - Replacement
 768 Capitalized Technology Software - Replacement

	6,180.00	26,780.00		26,780.00
	9,060.00	2,159.20		6,180.00
	6,180.00	6,180.00		11,219.20
				12,360.00
Total Property	\$21,420.00	\$35,119.20		\$56,539.20
Total 1100 Regular Programs – Elementary / Secondary	\$7,201,700.30	\$6,848,970.84	\$731,093.95	\$14,781,765.09

General Fund (10)

1110 Regular Programs

100 Personnel Services – Salaries

100 Personnel Services – Salaries

Total Personnel Services – Salaries

200 Personnel Services – Employee Benefits

210 Group Insurance – Contracted Provider

220 Social Security Contributions

230 PSERS Retirement Contributions

250 Unemployment Compensation

260 Workers' Compensation

291 Other Retirement Plans

299 All Other Employee Benefits

Total Personnel Services – Employee Benefits

300 Purchased Professional and Technical Services

329 Professional Educational Services – Other

Total Purchased Professional and Technical Services

400 Purchased Property Services

430 Repairs and Maintenance Services

440 Rentals

Total Purchased Property Services

500 Other Purchased Services

510 Student Transportation Services

530 Communications

550 Printing and Binding

561 Tuition To Other School Districts Within the State

562 Tuition To Pennsylvania Charter Schools

568 Tuition To Private Residential Rehabilitative Institutions (PRRI) [In-State] and Detention Centers

569 Tuition – Other

580 Travel

Total Other Purchased Services

600 Supplies

610 General Supplies

630 Food

640 Books and Periodicals

650 Supplies & Fees – Technology Related

Total Supplies

700 Property

756 Capitalized Technology Hardware and Equipment – Original

758 Capitalized Technology Software - Original

762 Capitalized Equipment - Replacement

768 Capitalized Technology Software - Replacement

Total Property

Total 1110 Regular Programs

Elementary	Secondary	Federal	Total
4,045,550.54	3,860,521.41	1,230.00	7,907,301.95
\$4,045,550.54	\$3,860,521.41	\$1,230.00	\$7,907,301.95
1,082,650.52	933,628.89		2,016,279.41
306,556.37	287,732.79	94.11	594,383.27
1,316,109.89	1,262,369.16	360.26	2,578,839.31
677.41	611.48	10.82	1,299.71
21,010.94	20,007.55	6.78	41,025.27
5,443.00	3,881.00		9,324.00
15,609.00	6,450.00		22,059.00
\$2,748,057.13	\$2,514,680.87	\$471.97	\$5,263,209.97
	45,586.04		45,586.04
	\$45,586.04		\$45,586.04
2,900.79	1,850.24		4,751.03
32,368.16	21,091.09		53,459.25
\$35,268.95	\$22,941.33		\$58,210.28
3,477.60	5,236.97		8,714.57
13,773.42	12,501.77		26,275.19
	4,241.78		4,241.78
	14,134.03		14,134.03
145,965.74	149,060.94		295,026.68
1,853.87	1,853.87		3,707.74
28,248.09	42,024.34		70,272.43
	227.29		227.29
\$193,318.72	\$229,280.99		\$422,599.71
104,959.74	73,112.33	5,001.55	183,073.62
101.20	1,790.81		1,892.01
29,868.12	60,704.98		90,573.10
23,155.90	5,232.88	7,151.03	35,539.81
\$158,084.96	\$140,841.00	\$12,152.58	\$311,078.54
	26,780.00		26,780.00
6,180.00			6,180.00
9,060.00	2,159.20		11,219.20
6,180.00	6,180.00		12,360.00
\$21,420.00	\$35,119.20		\$56,539.20
\$7,201,700.30	\$6,848,970.84	\$13,854.55	\$14,064,525.69

General Fund (10)		Elementary	Secondary	Federal	Total
1190 Federally-Funded Regular Programs					
100 <u>Personnel Services – Salaries</u>					
100 Personnel Services – Salaries				372,239.11	372,239.11
Total Personnel Services – Salaries				\$372,239.11	\$372,239.11
200 <u>Personnel Services – Employee Benefits</u>					
210 Group Insurance – Contracted Provider				91,261.99	91,261.99
220 Social Security Contributions				28,012.16	28,012.16
230 PSERS Retirement Contributions				121,513.33	121,513.33
250 Unemployment Compensation				548.92	548.92
260 Workers' Compensation				2,063.95	2,063.95
291 Other Retirement Plans				656.00	656.00
Total Personnel Services – Employee Benefits				\$244,056.35	\$244,056.35
600 <u>Supplies</u>					
610 General Supplies				100,943.94	100,943.94
Total Supplies				\$100,943.94	\$100,943.94
Total 1190 Federally-Funded Regular Programs				\$717,239.40	\$717,239.40

General Fund (10)

1200 Special Programs – Elementary / Secondary

100 Personnel Services – Salaries

100 Personnel Services – Salaries

	Elementary	Secondary	Federal	Total
	1,114,469.79	1,107,484.88	160,726.62	2,382,681.29

Total Personnel Services – Salaries

	\$1,114,469.79	\$1,107,484.88	\$160,726.62	\$2,382,681.29
--	----------------	----------------	--------------	----------------

200 Personnel Services – Employee Benefits

210 Group Insurance – Contracted Provider

220 Social Security Contributions

230 PSERS Retirement Contributions

250 Unemployment Compensation

260 Workers' Compensation

291 Other Retirement Plans

299 All Other Employee Benefits

460,045.47	520,823.17	29,949.70	1,010,818.34
82,495.60	82,121.42	12,015.87	176,632.89
357,931.92	362,569.52	52,637.94	773,139.38
105.77	125.20	411.88	642.85
5,750.06	5,712.41	883.97	12,346.44
1,441.00	300.00		1,741.00
1,548.00	3,096.00		4,644.00

Total Personnel Services – Employee Benefits

\$909,317.82	\$974,747.72	\$95,899.36	\$1,979,964.90
--------------	--------------	-------------	----------------

300 Purchased Professional and Technical Services

322 Professional Educational Services – Ius

330 Other Professional Services

75,133.20	75,133.17		150,266.37
29,289.73	29,289.72		58,579.45

Total Purchased Professional and Technical Services

\$104,422.93	\$104,422.89		\$208,845.82
--------------	--------------	--	--------------

400 Purchased Property Services

430 Repairs and Maintenance Services

2,460.32	2,460.31		4,920.63
----------	----------	--	----------

Total Purchased Property Services

\$2,460.32	\$2,460.31		\$4,920.63
------------	------------	--	------------

500 Other Purchased Services

510 Student Transportation Services

561 Tuition To Other School Districts Within the State

562 Tuition To Pennsylvania Charter Schools

567 Tuition To Approved Private Schools (APS) and PA Chartered Schools for the Deaf and Blind

569 Tuition – Other

580 Travel

1,819.64	3,298.24		5,117.88
2,967.54	12,535.71		15,503.25
90,385.97	90,385.96		180,771.93
6,865.24	6,865.24		13,730.48
20,769.50	20,769.50		41,539.00
14.98	44.98		59.96

Total Other Purchased Services

\$122,822.87	\$133,899.63		\$256,722.50
--------------	--------------	--	--------------

600 Supplies

610 General Supplies

630 Food

640 Books and Periodicals

650 Supplies & Fees – Technology Related

5,831.15	7,156.25		12,987.40
1,006.17	420.43		1,426.60
	604.59		604.59
5,751.09	4,644.61		10,395.70

Total Supplies

\$12,568.41	\$12,825.88		\$25,414.29
-------------	-------------	--	-------------

Total 1200 Special Programs – Elementary / Secondary

\$2,266,082.14	\$2,335,841.31	\$256,625.98	\$4,858,549.43
----------------	----------------	--------------	----------------

General Fund (10)

1210 Life Skills Support

Elementary

Secondary

Federal

Total

100 Personnel Services – Salaries

100 Personnel Services – Salaries

176,599.39

109,332.34

285,931.73

Total Personnel Services – Salaries

\$176,599.39

\$109,332.34

\$285,931.73

200 Personnel Services – Employee Benefits

210 Group Insurance – Contracted Provider

81,107.93

68,192.28

149,300.21

220 Social Security Contributions

13,113.49

8,062.95

21,176.44

230 PSERS Retirement Contributions

56,484.64

35,635.17

92,119.81

250 Unemployment Compensation

40.34

33.61

73.95

260 Workers' Compensation

913.82

564.51

1,478.33

291 Other Retirement Plans

350.00

1,548.00

350.00

299 All Other Employee Benefits

1,548.00

1,548.00

1,548.00

Total Personnel Services – Employee Benefits

\$152,010.22

\$114,036.52

\$266,046.74

500 Other Purchased Services

510 Student Transportation Services

1,058.66

1,567.59

2,626.25

561 Tuition To Other School Districts Within the State

20,689.50

197.52

197.52

569 Tuition – Other

20,689.50

20,689.50

41,379.00

Total Other Purchased Services

\$21,748.16

\$22,454.61

\$44,202.77

600 Supplies

610 General Supplies

714.91

1,548.99

2,263.90

630 Food

908.27

352.43

1,260.70

640 Books and Periodicals

462.15

462.15

462.15

650 Supplies & Fees – Technology Related

936.85

563.54

1,500.39

Total Supplies

\$2,560.03

\$2,927.11

\$5,487.14

Total 1210 Life Skills Support

\$352,917.80

\$248,750.58

\$601,668.38

General Fund (10)					
		<u>Elementary</u>	<u>Secondary</u>	<u>Federal</u>	<u>Total</u>
1220 Sensory Support					
100 Personnel Services – Salaries					
100 Personnel Services – Salaries				112,701.00	112,701.00
Total Personnel Services – Salaries				\$112,701.00	\$112,701.00
200 Personnel Services – Employee Benefits					
210 Group Insurance – Contracted Provider	1,669.50	1,669.49	22,479.22	25,818.21	
220 Social Security Contributions	0.23	0.23	8,397.04	8,397.50	
230 PSERS Retirement Contributions			36,909.56	36,909.56	
250 Unemployment Compensation	(80.73)	(80.72)	176.02	14.57	
260 Workers' Compensation	(18.94)	(18.94)	619.84	581.96	
Total Personnel Services – Employee Benefits	\$1,570.06	\$1,570.06	\$68,581.68	\$71,721.80	
300 Purchased Professional and Technical Services					
322 Professional Educational Services – Ius	18,612.00	18,611.98		37,223.98	
Total Purchased Professional and Technical Services	\$18,612.00	\$18,611.98		\$37,223.98	
400 Purchased Property Services					
430 Repairs and Maintenance Services	2,460.32	2,460.31		4,920.63	
Total Purchased Property Services	\$2,460.32	\$2,460.31		\$4,920.63	
600 Supplies					
610 General Supplies	238.54	238.53		477.07	
650 Supplies & Fees – Technology Related	167.98	167.97		335.95	
Total Supplies	\$406.52	\$406.50		\$813.02	
Total 1220 Sensory Support	\$23,048.90	\$23,048.85	\$181,282.68	\$227,380.43	

General Fund (10)				
1230 Emotional Support				
100 Personnel Services – Salaries				
100 Personnel Services – Salaries				
	Elementary	Secondary	Federal	Total
214,365.17	214,365.17	150,091.98		364,457.15
Total Personnel Services – Salaries	\$214,365.17	\$150,091.98		\$364,457.15
200 Personnel Services – Employee Benefits				
210 Group Insurance – Contracted Provider	69,885.85	72,637.62		142,523.47
220 Social Security Contributions	15,951.84	11,020.07		26,971.91
230 PSERS Retirement Contributions	68,710.59	49,056.79		117,767.38
250 Unemployment Compensation	58.67	36.55		95.22
260 Workers' Compensation	1,107.45	776.07		1,883.52
291 Other Retirement Plans	59.00	200.00		259.00
Total Personnel Services – Employee Benefits	\$155,773.40	\$133,727.10		\$289,500.50
300 Purchased Professional and Technical Services				
322 Professional Educational Services – Ius	46,190.79	46,190.78		92,381.57
Total Purchased Professional and Technical Services	\$46,190.79	\$46,190.78		\$92,381.57
500 Other Purchased Services				
510 Student Transportation Services	660.98	350.80		1,011.78
561 Tuition To Other School Districts Within the State	2,801.90	12,172.56		14,974.46
Total Other Purchased Services	\$3,462.88	\$12,523.36		\$15,986.24
600 Supplies				
610 General Supplies	1,826.11	937.78		2,763.89
630 Food	29.90			29.90
640 Books and Periodicals		142.44		142.44
650 Supplies & Fees – Technology Related	1,382.49	747.95		2,130.44
Total Supplies	\$3,238.50	\$1,828.17		\$5,066.67
Total 1230 Emotional Support	\$423,030.74	\$344,361.39		\$767,392.13

General Fund (10)				
1240 Academic Support				
100 Personnel Services – Salaries				
100 Personnel Services – Salaries				
Total Personnel Services – Salaries				
200 Personnel Services – Employee Benefits				
210 Group Insurance – Contracted Provider				
220 Social Security Contributions				
230 PSERS Retirement Contributions				
250 Unemployment Compensation				
260 Workers' Compensation				
291 Other Retirement Plans				
299 All Other Employee Benefits				
Total Personnel Services – Employee Benefits				
300 Purchased Professional and Technical Services				
322 Professional Educational Services – lus				
Total Purchased Professional and Technical Services				
500 Other Purchased Services				
510 Student Transportation Services				
561 Tuition To Other School Districts Within the State				
569 Tuition – Other				
580 Travel				
Total Other Purchased Services				
600 Supplies				
610 General Supplies				
650 Supplies & Fees – Technology Related				
Total Supplies				
Total 1240 Academic Support				

Elementary

Secondary

Federal

Total

715,584.77

778,213.50

48,025.62

1,541,823.89

\$715,584.77

\$778,213.50

\$48,025.62

\$1,541,823.89

307,382.19

345,564.39

7,470.48

660,417.06

52,937.21

57,903.03

3,618.83

114,459.07

230,140.73

255,374.95

15,728.38

501,244.06

77.10

103.62

235.86

416.58

3,706.81

4,030.00

264.13

8,000.94

1,032.00

100.00

1,132.00

1,132.00

1,548.00

1,548.00

1,548.00

1,548.00

\$596,824.04

\$663,075.99

\$27,317.68

\$1,287,217.71

10,330.41

10,330.41

20,660.82

20,660.82

\$10,330.41

\$10,330.41

\$20,660.82

\$20,660.82

165.64

217.30

217.30

217.30

80.00

165.63

331.27

331.27

80.00

80.00

160.00

160.00

30.00

30.00

30.00

30.00

\$245.64

\$492.93

\$738.57

\$738.57

2,894.63

2,189.92

5,084.55

5,084.55

3,263.77

3,165.15

6,428.92

6,428.92

\$6,158.40

\$5,355.07

\$11,513.47

\$11,513.47

\$1,329,143.26

\$1,457,467.90

\$75,343.30

\$2,861,954.46

LEA : 117596003 Northern Tioga SD

Printed 11/20/2018 1:01:52 PM

General Fund (10)					
1241 Learning Support – Public					
100	<u>Personnel Services – Salaries</u>				
100	Personnel Services – Salaries	664,167.69	765,359.58	48,026.62	1,477,552.89
	Total Personnel Services – Salaries	\$664,167.69	\$765,359.58	\$48,026.62	\$1,477,552.89
200	<u>Personnel Services – Employee Benefits</u>				
210	Group Insurance – Contracted Provider	294,145.96	342,243.89	7,470.48	643,860.33
220	Social Security Contributions	49,154.38	56,957.42	3,618.83	109,730.63
230	PSERS Retirement Contributions	213,301.59	251,165.35	15,728.38	480,195.32
250	Unemployment Compensation	8.79	86.52	236.86	331.17
260	Workers' Compensation	3,423.95	3,959.28	204.13	7,647.36
291	Other Retirement Plans	1,032.00	100.00		1,132.00
299	All Other Employee Benefits	1,548.00			1,548.00
	Total Personnel Services – Employee Benefits	\$562,614.67	\$654,512.46	\$27,317.68	\$1,244,444.81
300	<u>Purchased Professional and Technical Services</u>				
322	Professional Educational Services – Jus	10,330.41	10,330.41		20,660.82
	Total Purchased Professional and Technical Services	\$10,330.41	\$10,330.41		\$20,660.82
500	<u>Other Purchased Services</u>				
510	Student Transportation Services		217.30		217.30
561	Tuition To Other School Districts Within the State	165.64	165.63		331.27
569	Tuition – Other	80.00	80.00		160.00
580	Travel		30.00		30.00
	Total Other Purchased Services	\$245.64	\$492.93		\$738.57
600	<u>Supplies</u>				
610	General Supplies	1,904.63	1,120.17		3,024.80
650	Supplies & Fees – Technology Related	2,995.00	3,097.97		6,092.97
	Total Supplies	\$4,899.63	\$4,218.14		\$9,117.77
	Total 1241 Learning Support – Public	\$1,242,258.04	\$1,434,913.52	\$75,343.30	\$2,752,514.86

General Fund (10)

1243 Gifted Support

ElementarySecondaryFederalTotal100 Personnel Services – Salaries

100 Personnel Services – Salaries

51,417.08

12,853.92

64,271.00

Total Personnel Services – Salaries\$51,417.08\$12,853.92\$64,271.00200 Personnel Services – Employee Benefits

210 Group Insurance – Contracted Provider

13,236.23

3,320.50

16,556.73

220 Social Security Contributions

3,782.83

945.61

4,728.44

230 PSERS Retirement Contributions

16,839.14

4,209.60

21,048.74

250 Unemployment Compensation

68.31

17.10

85.41

260 Workers' Compensation

282.86

70.72

353.58

Total Personnel Services – Employee Benefits\$34,209.37\$8,563.53\$42,772.90600 Supplies

610 General Supplies

990.00

1,069.75

2,059.75

650 Supplies & Fees – Technology Related

268.77

67.18

335.95

Total Supplies\$1,258.77\$1,136.93\$2,395.70Total 1243 Gifted Support\$86,885.22\$22,554.38\$109,439.60

General Fund (10)				
1260 Physical Support				
300 Purchased Professional and Technical Services				
330 Other Professional Services	29,289.73	29,289.72		58,579.45
Total Purchased Professional and Technical Services	\$29,289.73	\$29,289.72		\$58,579.45
Total 1260 Physical Support	\$29,289.73	\$29,289.72		\$58,579.45

General Fund (10)

1270 Multi-Handicapped Support

100 Personnel Services – Salaries

100 Personnel Services – Salaries

ElementarySecondaryFederalTotal

61,926.61

61,926.61

Total Personnel Services – Salaries**\$61,926.61****\$61,926.61****200 Personnel Services – Employee Benefits**

210 Group Insurance – Contracted Provider

220 Social Security Contributions

230 PSERS Retirement Contributions

250 Unemployment Compensation

260 Workers' Compensation

299 All Other Employee Benefits

32,759.39

32,759.39

4,642.32

4,642.32

19,906.66

19,906.66

21.76

21.76

319.85

319.85

1,548.00

1,548.00

Total Personnel Services – Employee Benefits**\$59,197.98****\$59,197.98****500 Other Purchased Services**

510 Student Transportation Services

1,062.55

1,062.55

Total Other Purchased Services**\$1,062.55****\$1,062.55****600 Supplies**

610 General Supplies

2,084.07

2,084.07

Total Supplies**\$2,084.07****\$2,084.07****Total 1270 Multi-Handicapped Support****\$124,271.21****\$124,271.21**

General Fund (10)

1290 Special Programs - Other Support

100 Personnel Services – Salaries

Elementary

Secondary

Federal

Total

100 Personnel Services – Salaries

7,920.46

7,920.45

15,840.91

Total Personnel Services – Salaries

\$7,920.46

\$7,920.45

\$15,840.91

200 Personnel Services – Employee Benefits

220 Social Security Contributions

492.83

492.82

985.65

230 PSERS Retirement Contributions

2,595.96

2,595.95

5,191.91

250 Unemployment Compensation

10.39

10.38

20.77

260 Workers' Compensation

40.92

40.92

81.84

Total Personnel Services – Employee Benefits

\$3,140.10

\$3,140.07

\$6,280.17

500 Other Purchased Services

510 Student Transportation Services

100.00

100.00

200.00

562 Tuition To Pennsylvania Charter Schools

90,385.97

90,385.96

180,771.93

567 Tuition To Approved Private Schools (APs) and PA Chartered Schools for the Deaf and Blind

6,865.24

6,865.24

13,730.48

580 Travel

14.98

14.98

29.96

Total Other Purchased Services

\$97,366.19

\$97,366.18

\$194,732.37

600 Supplies

610 General Supplies

156.96

156.96

313.92

630 Food

68.00

68.00

136.00

Total Supplies

\$224.96

\$224.96

\$449.92

Total 1290 Special Programs - Other Support

\$108,651.71

\$108,651.66

\$217,303.37

General Fund (10)					
1300 Vocational Education		Elementary	Secondary	Federal	Total
100 <u>Personnel Services – Salaries</u>					
100	Personnel Services – Salaries		124,283.02		124,283.02
Total Personnel Services – Salaries			\$124,283.02		\$124,283.02
200 <u>Personnel Services – Employee Benefits</u>					
210	Group Insurance – Contracted Provider		31,285.56		31,285.56
220	Social Security Contributions		9,340.42		9,340.42
230	PSERS Retirement Contributions		40,497.70		40,497.70
250	Unemployment Compensation		13.63		13.63
260	Workers' Compensation		641.85		641.85
Total Personnel Services – Employee Benefits			\$81,779.16		\$81,779.16
500 <u>Other Purchased Services</u>					
510	Student Transportation Services			2,000.60	2,000.60
564	Tuition To Career and Technology Centers		23,735.18		23,735.18
580	Travel		2,050.31		2,050.31
Total Other Purchased Services			\$25,785.49	\$2,000.60	\$27,786.09
600 <u>Supplies</u>					
610	General Supplies		11,352.45	8,334.27	19,686.72
640	Books and Periodicals		26.64		26.64
Total Supplies			\$11,379.09	\$8,334.27	\$19,713.36
700 <u>Property</u>					
752	Capital Equipment – Original and Additional		9,831.41	5,963.87	15,795.28
762	Capitalized Equipment - Replacement			11,634.00	11,634.00
Total Property			\$9,831.41	\$17,597.87	\$27,429.28
800 <u>Other Objects</u>					
810	Dues and Fees		1,796.25		1,796.25
Total Other Objects			\$1,796.25		\$1,796.25
Total 1300 Vocational Education			\$254,854.42	\$27,932.74	\$282,787.16

General Fund (10)					
1400 Other Instructional Programs – Elementary / Secondary		Elementary	Secondary	Federal	Total
100	<u>Personnel Services – Salaries</u>				
100	Personnel Services – Salaries	48,038.86	48,038.86		48,038.86
	Total Personnel Services – Salaries	\$48,038.86	\$48,038.86		\$48,038.86
200	<u>Personnel Services – Employee Benefits</u>				
210	Group Insurance – Contracted Provider	7,136.37	7,136.37		7,136.37
220	Social Security Contributions	3,636.05	3,636.05		3,636.05
230	PSERS Retirement Contributions	15,735.13	15,735.13		15,735.13
250	Unemployment Compensation	120.38	120.38		120.38
260	Workers' Compensation	264.18	264.18		264.18
	Total Personnel Services – Employee Benefits	\$26,892.11	\$26,892.11		\$26,892.11
300	<u>Purchased Professional and Technical Services</u>				
322	Professional Educational Services – Ius	22,799.30	8,975.23		31,774.53
330	Other Professional Services		13,791.00		13,791.00
	Total Purchased Professional and Technical Services	\$22,799.30	\$22,766.23		\$45,565.53
400	<u>Purchased Property Services</u>				
430	Repairs and Maintenance Services		287.85		287.85
440	Rentals		11,680.00		11,680.00
	Total Purchased Property Services		\$11,967.85		\$11,967.85
500	<u>Other Purchased Services</u>				
520	Insurance – General		2,065.72		2,065.72
561	Tuition To Other School Districts Within the State		24,463.08		24,463.08
563	Tuition To Nonpublic Schools		2,210.00		2,210.00
569	Tuition – Other	180.00	300.00		480.00
580	Travel	584.53	3,331.36		3,915.89
	Total Other Purchased Services	\$764.53	\$32,370.16		\$33,134.69
600	<u>Supplies</u>				
610	General Supplies		1,268.05		1,268.05
	Total Supplies		\$1,268.05		\$1,268.05
	Total 1400 Other Instructional Programs – Elementary / Secondary	\$23,563.83	\$143,303.26		\$166,867.09

General Fund (10)					
1410 Drivers' Education		Elementary	Secondary	Federal	Total
100	<u>Personnel Services – Salaries</u>				
100	Personnel Services – Salaries		38,233.86		38,233.86
Total Personnel Services – Salaries			\$38,233.86		\$38,233.86
200	<u>Personnel Services – Employee Benefits</u>				
210	Group Insurance – Contracted Provider		7,136.37		7,136.37
220	Social Security Contributions		2,885.96		2,885.96
230	PSEERS Retirement Contributions		12,521.80		12,521.80
250	Unemployment Compensation		52.35		52.35
260	Workers' Compensation		210.24		210.24
Total Personnel Services – Employee Benefits			\$22,806.72		\$22,806.72
400	<u>Purchased Property Services</u>				
430	Repairs and Maintenance Services		287.85		287.85
440	Rentals		11,680.00		11,680.00
Total Purchased Property Services			\$11,967.85		\$11,967.85
500	<u>Other Purchased Services</u>				
520	Insurance – General		2,065.72		2,065.72
Total Other Purchased Services			\$2,065.72		\$2,065.72
600	<u>Supplies</u>				
610	General Supplies		1,268.05		1,268.05
Total Supplies			\$1,268.05		\$1,268.05
Total 1410 Drivers' Education			\$76,342.20		\$76,342.20

General Fund (10)

1420 Summer School

Elementary

Secondary

Federal

Total

100 Personnel Services – Salaries

100 Personnel Services – Salaries

600.00

600.00

Total Personnel Services – Salaries

\$600.00

\$600.00

200 Personnel Services – Employee Benefits

220 Social Security Contributions

45.90

45.90

230 PSERS Retirement Contributions

198.68

198.68

260 Workers' Compensation

3.30

3.30

Total Personnel Services – Employee Benefits

\$247.88

\$247.88

500 Other Purchased Services

563 Tuition To Nonpublic Schools

2,210.00

2,210.00

Total Other Purchased Services

\$2,210.00

\$2,210.00

Total 1420 Summer School

\$3,057.88

\$3,057.88

General Fund (10)

1430 Homebound Instruction

ElementarySecondaryFederalTotal100 Personnel Services – Salaries

100 Personnel Services – Salaries

9,205.00

9,205.00

Total Personnel Services – Salaries\$9,205.00\$9,205.00200 Personnel Services – Employee Benefits

220 Social Security Contributions

704.19

704.19

230 PSERS Retirement Contributions

3,014.65

3,014.65

250 Unemployment Compensation

68.03

68.03

260 Workers' Compensation

50.64

50.64

Total Personnel Services – Employee Benefits\$3,837.51\$3,837.51500 Other Purchased Services

569 Tuition – Other

180.00

300.00

480.00

580 Travel

584.53

3,331.36

3,915.89

Total Other Purchased Services\$764.53\$3,631.36\$4,395.89Total 1430 Homebound Instruction\$764.53\$16,673.87\$17,438.40

General Fund (10)				
1440 Alternative Regular Education Programs				
300 Purchased Professional and Technical Services				
322 Professional Educational Services – Ius	22,799.30	8,975.23		31,774.53
330 Other Professional Services		13,791.00		13,791.00
Total Purchased Professional and Technical Services	\$22,799.30	\$22,766.23		\$45,565.53
500 Other Purchased Services				
561 Tuition To Other School Districts Within the State		24,463.08		24,463.08
Total Other Purchased Services		\$24,463.08		\$24,463.08
Total 1440 Alternative Regular Education Programs	\$22,799.30	\$47,229.31		\$70,028.61

LEA : 117596003 Northern Tioga SD

Printed 11/20/2018 1:01:52 PM

Page - 22 of 24

General Fund (10)

1442 Alternative Education Programs

300 Purchased Professional and Technical Services

322 Professional Educational Services – lus

330 Other Professional Services

Total Purchased Professional and Technical Services

500 Other Purchased Services

561 Tuition To Other School Districts Within the State

Total Other Purchased Services

Total 1442 Alternative Education Programs

	Elementary	Secondary	Federal	Total
322 Professional Educational Services – lus	22,799.30	8,975.23		31,774.53
330 Other Professional Services		13,791.00		13,791.00
Total Purchased Professional and Technical Services	\$22,799.30	\$22,766.23		\$45,565.53
500 Other Purchased Services				
561 Tuition To Other School Districts Within the State		24,463.08		24,463.08
Total Other Purchased Services		\$24,463.08		\$24,463.08
Total 1442 Alternative Education Programs	\$22,799.30	\$47,229.31		\$70,028.61

General Fund (10)			
	Elementary	Secondary	Federal
	Total		
1800 Pre-Kindergarten			
100 <u>Personnel Services – Salaries</u>			225,698.09
100 Personnel Services – Salaries			\$225,698.09
Total Personnel Services – Salaries			
200 <u>Personnel Services – Employee Benefits</u>			
210 Group Insurance – Contracted Provider			55,759.10
220 Social Security Contributions			17,191.57
230 PSERS Retirement Contributions			73,368.48
250 Unemployment Compensation			546.57
260 Workers' Compensation			1,243.62
291 Other Retirement Plans			450.00
Total Personnel Services – Employee Benefits			\$148,559.34
600 <u>Supplies</u>			
650 Supplies & Fees – Technology Related			2,015.70
Total Supplies			\$2,015.70
Total 1800 Pre-Kindergarten			\$376,273.13

LEA : 117596003 Northern Tioga SD

Printed 11/20/2018 1:01:52 PM

General Fund (10)				
	Elementary	Secondary	Federal	Total
1801 Pre-K Instruction				
100 Personnel Services – Salaries				225,698.09
100 Personnel Services – Salaries				
Total Personnel Services – Salaries				\$225,698.09
200 Personnel Services – Employee Benefits				
210 Group Insurance – Contracted Provider				55,759.10
220 Social Security Contributions				17,191.57
230 PSERS Retirement Contributions				73,368.48
250 Unemployment Compensation				546.57
260 Workers' Compensation				1,243.62
291 Other Retirement Plans				450.00
Total Personnel Services – Employee Benefits				\$148,559.34
600 Supplies				2,015.70
650 Supplies & Fees – Technology Related				
Total Supplies				\$2,015.70
Total 1801 Pre-K Instruction				\$376,273.13

General Fund (10)**2000 Support Services****100 Personnel Services – Salaries**

100 Personnel Services – Salaries

3,218,342.71

Total**Total Personnel Services – Salaries****\$3,218,342.71****200 Personnel Services – Employee Benefits**

210 Group Insurance – Contracted Provider

889,870.89

220 Social Security Contributions

240,727.06

230 PSERS Retirement Contributions

1,047,586.49

240 Tuition Reimbursement

77,356.20

250 Unemployment Compensation

848.35

260 Workers' Compensation

16,850.73

291 Other Retirement Plans

100.00

299 All Other Employee Benefits

7,729.80

Total Personnel Services – Employee Benefits**\$2,281,069.52****300 Purchased Professional and Technical Services**

310 Official / Administrative Services

24,466.09

322 Professional Educational Services – Ius

1,054.29

323 Professional Educational Services – Other Educational Agencies

1,971.25

324 Professional Educational Services – Employee Training and Development Services

52,120.05

330 Other Professional Services

79,550.68

340 Technical Services

58,807.70

390 Other Purchased Professional and Technical Services

3,500.00

Total Purchased Professional and Technical Services**\$221,470.06****400 Purchased Property Services**

410 Cleaning Services

40,725.86

420 Utility Services

101,712.47

430 Repairs and Maintenance Services

170,669.29

440 Rentals

43,684.33

Total Purchased Property Services**\$356,791.95****500 Other Purchased Services**

510 Student Transportation Services

2,257.25

513 Contracted Carriers

1,971,465.79

516 Student Transportation Services From the IU

17,318.51

520 Insurance – General

16,349.49

523 General Property and Liability Insurance

140,764.28

530 Communications

69,881.52

549 Other Advertising/Public Relations

22,741.38

550 Printing and Binding

28,804.04

580 Travel

48,153.97

599 Other Miscellaneous Purchased Services

528.75

Total Other Purchased Services**\$2,318,264.98****600 Supplies**

610 General Supplies

165,083.18

620 Energy

408,232.00

630 Food

6,968.60

General Fund (10)

2000 Support Services

Total

600 Supplies

640 Books and Periodicals

74,208.38

650 Supplies & Fees – Technology Related

215,483.82

Total Supplies

\$869,975.98

700 Property

752 Capital Equipment – Original and Additional

18,915.35

762 Capitalized Equipment - Replacement

43,305.94

766 Capitalized Technology Hardware and Equipment – Replacement

5,002.41

768 Capitalized Technology Software - Replacement

6,719.00

Total Property

\$73,942.70

800 Other Objects

810 Dues and Fees

21,397.97

890 Miscellaneous Expenditures

4,751.67

Total Other Objects

\$26,149.64

Total 2000 Support Services

\$9,366,007.54

General Fund (10)

2100 Support Services – Students

100 Personnel Services – Salaries

100 Personnel Services – Salaries

ElementarySecondaryFederalTotal

53,457.56

264,046.73

174,606.76

554,285.87

Total Personnel Services – Salaries\$53,457.56\$264,046.73\$174,606.76\$554,285.87200 Personnel Services – Employee Benefits

210 Group Insurance – Contracted Provider

220 Social Security Contributions

230 PSERS Retirement Contributions

250 Unemployment Compensation

260 Workers' Compensation

12,798.61

93,238.26

55,292.63

166,101.86

3,946.67

19,484.37

13,085.06

41,214.34

17,507.31

86,493.90

57,060.10

181,423.58

(71.56)

51.23

261.87

248.82

254.16

1,363.40

958.12

2,917.68

Total Personnel Services – Employee Benefits\$34,435.19\$200,631.16\$126,657.78\$391,906.28300 Purchased Professional and Technical Services

322 Professional Educational Services – Ius

527.15

527.14

1,054.29

Total Purchased Professional and Technical Services\$527.15\$527.14\$1,054.29400 Purchased Property Services

440 Rentals

1,370.30

1,370.30

1,370.30

Total Purchased Property Services\$1,370.30\$1,370.30\$1,370.30500 Other Purchased Services

510 Student Transportation Services

530 Communications

580 Travel

1,279.55

977.70

2,257.25

1,347.20

3,019.45

3,019.45

Total Other Purchased Services\$2,626.75\$5,839.14\$9,329.37600 Supplies

610 General Supplies

650 Supplies & Fees – Technology Related

2,057.56

4,522.86

6,736.07

149.30

149.29

1,940.99

Total Supplies\$2,206.86\$4,672.15\$8,677.06800 Other Objects

810 Dues and Fees

331.50

142.50

699.00

Total Other Objects\$331.50\$142.50\$699.00Total 2100 Support Services – Students\$93,585.01\$477,229.12\$301,264.54\$967,322.17

General Fund (10)

2120 Guidance Services

ElementarySecondaryFederalTotal100 Personnel Services – Salaries

100 Personnel Services – Salaries

1,371.56

211,960.73

65,489.34

278,821.63

Total Personnel Services – Salaries**\$1,371.56****\$211,960.73****\$65,489.34****\$278,821.63**200 Personnel Services – Employee Benefits

210 Group Insurance – Contracted Provider

74.89

80,514.55

19,246.19

99,835.63

220 Social Security Contributions

104.93

15,642.64

4,876.80

20,624.37

230 PSERS Retirement Contributions

449.18

69,435.77

21,324.15

91,209.10

250 Unemployment Compensation

(80.74)

42.05

88.01

49.32

260 Workers' Compensation

(14.79)

1,094.45

358.04

1,437.70

Total Personnel Services – Employee Benefits**\$533.47****\$166,729.46****\$45,893.19****\$213,156.12**400 Purchased Property Services

440 Rentals

1,370.30

1,370.30

1,370.30

Total Purchased Property Services**\$1,370.30****\$1,370.30****\$1,370.30**500 Other Purchased Services

510 Student Transportation Services

1,279.55

977.70

2,257.25

530 Communications

599.20

3,019.45

1,693.20

3,019.45

580 Travel

1,094.00

1,094.00

1,693.20

Total Other Purchased Services**\$1,878.75****\$5,091.15****\$6,969.90**600 Supplies

610 General Supplies

224.90

2,690.21

2,915.11

Total Supplies**\$224.90****\$2,690.21****\$2,915.11**800 Other Objects

810 Dues and Fees

189.00

189.00

189.00

Total Other Objects**\$189.00****\$189.00****\$189.00****Total 2120 Guidance Services****\$4,197.68****\$387,841.85****\$111,382.53****\$503,422.06**

General Fund (10)				
2140 Psychological Services				
100 Personnel Services – Salaries	Elementary	Secondary	Federal	Total
100 Personnel Services – Salaries	52,086.00	52,086.00		104,172.00
Total Personnel Services – Salaries	\$52,086.00	\$52,086.00		\$104,172.00
200 Personnel Services – Employee Benefits				
210 Group Insurance – Contracted Provider	12,723.72	12,723.71		25,447.43
220 Social Security Contributions	3,841.74	3,841.73		7,683.47
230 PSERS Retirement Contributions	17,058.13	17,058.13		34,116.26
250 Unemployment Compensation	9.18	9.18		18.36
260 Workers' Compensation	268.95	268.95		537.90
Total Personnel Services – Employee Benefits	\$33,901.72	\$33,901.70		\$67,803.42
300 Purchased Professional and Technical Services				
322 Professional Educational Services – lus	527.15	527.14		1,054.29
Total Purchased Professional and Technical Services	\$527.15	\$527.14		\$1,054.29
500 Other Purchased Services				
580 Travel	748.00	747.99		1,495.99
Total Other Purchased Services	\$748.00	\$747.99		\$1,495.99
600 Supplies				
610 General Supplies	1,832.66	1,832.65		3,665.31
650 Supplies & Fees – Technology Related	149.30	149.29		298.59
Total Supplies	\$1,981.96	\$1,981.94		\$3,963.90
800 Other Objects				
810 Dues and Fees	142.50	142.50		285.00
Total Other Objects	\$142.50	\$142.50		\$285.00
Total 2140 Psychological Services	\$89,387.33	\$89,387.27		\$178,774.60

General Fund (10)					
2160 Social Work Services		Elementary	Secondary	Federal	Total
100 Personnel Services – Salaries					
100	Personnel Services – Salaries			109,117.42	171,292.24
Total Personnel Services – Salaries				\$109,117.42	\$171,292.24
200 Personnel Services – Employee Benefits					
210	Group Insurance – Contracted Provider			36,046.44	40,818.80
220	Social Security Contributions			8,208.26	12,906.50
230	PSERS Retirement Contributions			35,735.95	56,098.22
250	Unemployment Compensation			173.86	181.14
260	Workers' Compensation			600.08	942.08
Total Personnel Services – Employee Benefits				\$80,764.59	\$110,946.74
500 Other Purchased Services					
580	Travel				863.48
Total Other Purchased Services					\$863.48
600 Supplies					
610	General Supplies				155.65
650	Supplies & Fees – Technology Related				1,642.40
Total Supplies					\$1,798.05
800 Other Objects					
810	Dues and Fees				225.00
Total Other Objects					\$225.00
Total 2160 Social Work Services				\$189,882.01	\$285,125.51

General Fund (10)

2200 Support Services – Instructional Staff

100 Personnel Services – Salaries

100 Personnel Services – Salaries

	Elementary	Secondary	Federal	Total
2200 Support Services – Instructional Staff				
100 Personnel Services – Salaries	290,324.06	227,753.53	100,755.20	618,832.79
Total Personnel Services – Salaries	\$290,324.06	\$227,753.53	\$100,755.20	\$618,832.79

200 Personnel Services – Employee Benefits

210 Group Insurance – Contracted Provider
 220 Social Security Contributions
 230 PSERS Retirement Contributions
 240 Tuition Reimbursement
 250 Unemployment Compensation
 260 Workers' Compensation

Total Personnel Services – Employee Benefits

200 Personnel Services – Employee Benefits	77,179.83	66,114.67	3,067.29	146,361.79
210 Group Insurance – Contracted Provider	21,901.77	17,226.57	7,918.87	47,047.21
220 Social Security Contributions	90,873.93	73,583.98	33,783.37	198,241.28
230 PSERS Retirement Contributions	41,295.10	30,214.10	88.00	71,509.20
240 Tuition Reimbursement	127.11	33.83		248.94
250 Unemployment Compensation	1,537.43	1,212.07	567.27	3,316.77
260 Workers' Compensation				
Total Personnel Services – Employee Benefits	\$232,915.17	\$188,385.22	\$45,424.80	\$466,725.19

300 Purchased Professional and Technical Services

323 Professional Educational Services – Other Educational Agencies
 324 Professional Educational Services – Employee Training and Development Services
 330 Other Professional Services
 340 Technical Services
 390 Other Purchased Professional and Technical Services

Total Purchased Professional and Technical Services

300 Purchased Professional and Technical Services	781.75	1,189.50		1,971.25
323 Professional Educational Services – Other Educational Agencies	11,631.31	8,113.81	20,763.77	40,508.89
324 Professional Educational Services – Employee Training and Development Services	2,778.26	2,521.74		5,300.00
330 Other Professional Services	8,602.22	1,118.63		9,720.85
340 Technical Services	1,834.70	1,665.30		3,500.00
390 Other Purchased Professional and Technical Services				
Total Purchased Professional and Technical Services	\$25,628.24	\$14,608.98	\$20,763.77	\$61,000.99

400 Purchased Property Services

430 Repairs and Maintenance Services
 440 Rentals

Total Purchased Property Services

400 Purchased Property Services	10,496.70	9,532.28		20,028.98
430 Repairs and Maintenance Services	1,733.07	1,639.24		3,372.31
440 Rentals				
Total Purchased Property Services	\$12,229.77	\$11,171.52		\$23,401.29

500 Other Purchased Services

530 Communications
 580 Travel
 599 Other Miscellaneous Purchased Services

Total Other Purchased Services

500 Other Purchased Services	4,427.41	4,420.38		8,847.79
530 Communications	12,816.93	6,803.58	682.85	20,303.36
580 Travel	528.75			528.75
599 Other Miscellaneous Purchased Services				
Total Other Purchased Services	\$17,773.09	\$11,223.96	\$682.85	\$29,679.90

600 Supplies

610 General Supplies
 630 Food
 640 Books and Periodicals
 650 Supplies & Fees – Technology Related

Total Supplies

600 Supplies	4,673.58	6,469.98		11,143.56
610 General Supplies	2,236.82	1,881.91		4,118.73
630 Food	43,248.90	30,352.02		73,600.92
640 Books and Periodicals	92,499.77	39,373.66	28,883.97	160,757.40
650 Supplies & Fees – Technology Related				
Total Supplies	\$142,659.07	\$78,077.57	\$28,883.97	\$249,620.61

700 Property

766 Capitalized Technology Hardware and Equipment – Replacement
 768 Capitalized Technology Software - Replacement

Total Property

700 Property	2,622.27	2,380.14		5,002.41
766 Capitalized Technology Hardware and Equipment – Replacement		6,719.00		6,719.00
768 Capitalized Technology Software - Replacement				
Total Property	\$2,622.27	\$9,099.14		\$11,721.41

800 Other Objects

810 Dues and Fees

Total Other Objects

800 Other Objects	601.08	562.92		1,164.00
810 Dues and Fees				
Total Other Objects	\$601.08	\$562.92		\$1,164.00

Total 2200 Support Services – Instructional Staff

Total 2200 Support Services – Instructional Staff	\$724,752.75	\$540,882.84	\$196,510.59	\$1,462,146.18
---	--------------	--------------	--------------	----------------

General Fund (10)

2220 Technology Support Services

100 Personnel Services – Salaries

100 Personnel Services – Salaries

Total Personnel Services – Salaries

200 Personnel Services – Employee Benefits

210 Group Insurance – Contracted Provider

220 Social Security Contributions

230 PSERS Retirement Contributions

250 Unemployment Compensation

260 Workers' Compensation

Total Personnel Services – Employee Benefits

300 Purchased Professional and Technical Services

330 Other Professional Services

340 Technical Services

390 Other Purchased Professional and Technical Services

Total Purchased Professional and Technical Services

400 Purchased Property Services

430 Repairs and Maintenance Services

Total Purchased Property Services

500 Other Purchased Services

530 Communications

580 Travel

Total Other Purchased Services

600 Supplies

610 General Supplies

640 Books and Periodicals

650 Supplies & Fees – Technology Related

Total Supplies

700 Property

766 Capitalized Technology Hardware and Equipment – Replacement

Total Property

Total 2220 Technology Support Services

Elementary

Secondary

Federal

Total

76,715.08

68,038.91

144,753.99

\$76,715.08

\$68,038.91

\$144,753.99

22,884.83

20,771.36

43,656.19

5,697.47

5,048.57

10,746.04

25,152.37

22,307.99

47,460.36

11.44

10.39

21.83

395.82

351.41

747.23

\$54,141.93

\$48,489.72

\$102,631.65

2,778.26

2,521.74

5,300.00

1,232.41

1,118.63

2,351.04

1,834.70

1,665.30

3,500.00

\$5,845.37

\$5,305.67

\$11,151.04

10,448.06

9,483.64

19,931.70

\$10,448.06

\$9,483.64

\$19,931.70

1,197.47

1,196.76

2,394.23

1,800.79

1,634.55

3,435.34

\$2,998.26

\$2,831.31

\$5,829.57

149.00

169.43

318.43

11,367.30

10,317.75

21,685.05

84,805.54

30,484.94

28,883.97

\$96,321.84

\$40,972.12

\$28,883.97

\$2,622.27

2,380.14

5,002.41

\$2,622.27

\$2,380.14

\$5,002.41

\$249,092.81

\$177,501.51

\$28,883.97

\$455,478.29

General Fund (10)				
2250 School Library Services				
100 Personnel Services – Salaries				
100 Personnel Services – Salaries				
Total Personnel Services – Salaries				
	Elementary	Secondary	Federal	Total
	96,115.18	57,853.82		153,969.00
	\$96,115.18	\$57,853.82		\$153,969.00
200 Personnel Services – Employee Benefits				
210 Group Insurance – Contracted Provider	31,123.71	23,859.44		54,983.15
220 Social Security Contributions	7,255.50	4,383.66		11,639.16
230 PSERS Retirement Contributions	30,539.96	18,330.68		48,870.64
250 Unemployment Compensation	26.04	13.18		39.22
260 Workers' Compensation	496.58	298.86		795.44
	\$69,441.79	\$46,885.82		\$116,327.61
Total Personnel Services – Employee Benefits				
600 Supplies				
610 General Supplies	3,094.25	4,896.87		7,991.12
640 Books and Periodicals	31,881.60	20,034.27		51,915.87
	\$34,975.85	\$24,931.14		\$59,906.99
Total Supplies				
700 Property				
768 Capitalized Technology Software - Replacement		6,719.00		6,719.00
		\$6,719.00		\$6,719.00
Total Property				
800 Other Objects				
810 Dues and Fees	30.00	30.00		60.00
	\$30.00	\$30.00		\$60.00
Total Other Objects				
	\$200,562.82	\$136,419.78		\$336,982.60
Total 2250 School Library Services				

General Fund (10)

2260 Instruction and Curriculum Development Services

100 Personnel Services – Salaries

100 Personnel Services – Salaries

Elementary

Secondary

Federal

Total

101,805.36

95,391.08

100,755.20

297,951.64

Total Personnel Services – Salaries

\$101,805.36

\$95,391.08

\$100,755.20

\$297,951.64

200 Personnel Services – Employee Benefits

210 Group Insurance – Contracted Provider

220 Social Security Contributions

230 PSERS Retirement Contributions

250 Unemployment Compensation

260 Workers' Compensation

23,171.29

21,483.87

3,067.29

47,722.45

7,748.55

7,289.34

7,918.87

22,966.76

33,342.15

31,399.53

33,783.37

98,525.05

(28.98)

(29.76)

88.00

29.26

558.67

526.19

567.27

1,652.13

Total Personnel Services – Employee Benefits

\$64,791.68

\$60,679.17

\$45,424.80

\$170,895.65

300 Purchased Professional and Technical Services

340 Technical Services

7,369.81

7,369.81

Total Purchased Professional and Technical Services

\$7,369.81

\$7,369.81

400 Purchased Property Services

430 Repairs and Maintenance Services

440 Rentals

48.64

48.64

97.28

1,733.07

1,639.24

3,372.31

Total Purchased Property Services

\$1,781.71

\$1,687.88

\$3,469.59

500 Other Purchased Services

530 Communications

580 Travel

3,229.94

3,223.62

6,453.56

2,315.68

2,222.07

4,537.75

Total Other Purchased Services

\$5,545.62

\$5,445.69

\$10,991.31

600 Supplies

610 General Supplies

630 Food

650 Supplies & Fees – Technology Related

1,406.63

1,344.23

2,750.86

24.58

22.42

47.00

7,694.23

8,888.72

16,582.95

Total Supplies

\$9,125.44

\$10,265.37

\$19,380.81

800 Other Objects

810 Dues and Fees

571.08

632.92

1,104.00

Total Other Objects

\$571.08

\$632.92

\$1,104.00

Total 2260 Instruction and Curriculum Development Services

\$190,990.70

\$173,992.11

\$146,180.00

\$511,162.81

General Fund (10)

2270 Instructional Staff Professional Development Services

100 Personnel Services – Salaries

100 Personnel Services – Salaries

Total Personnel Services – Salaries

200 Personnel Services – Employee Benefits

220 Social Security Contributions

230 PSERS Retirement Contributions

240 Tuition Reimbursement

250 Unemployment Compensation

260 Workers' Compensation

Total Personnel Services – Employee Benefits

300 Purchased Professional and Technical Services

323 Professional Educational Services – Other Educational Agencies

324 Professional Educational Services – Employee Training and Development Services

Total Purchased Professional and Technical Services

500 Other Purchased Services

580 Travel

599 Other Miscellaneous Purchased Services

Total Other Purchased Services

600 Supplies

610 General Supplies

630 Food

Total Supplies

Total 2270 Instructional Staff Professional Development Services

	Elementary	Secondary	Federal	Total
100 Personnel Services – Salaries	15,688.44	6,469.72		22,158.16
Total Personnel Services – Salaries	\$15,688.44	\$6,469.72		\$22,158.16
200 Personnel Services – Employee Benefits				
220 Social Security Contributions	1,200.25	495.00		1,695.25
230 PSERS Retirement Contributions	1,839.45	1,545.78		3,385.23
240 Tuition Reimbursement	41,295.10	30,214.10		71,509.20
250 Unemployment Compensation	118.61	40.02		158.63
260 Workers' Compensation	86.36	35.61		121.97
Total Personnel Services – Employee Benefits	\$44,539.77	\$32,330.51		\$76,870.28
300 Purchased Professional and Technical Services				
323 Professional Educational Services – Other Educational Agencies	781.75	1,189.50		1,971.25
324 Professional Educational Services – Employee Training and Development Services	11,631.31	8,113.81	20,763.77	40,508.89
Total Purchased Professional and Technical Services	\$12,413.06	\$9,303.31	\$20,763.77	\$42,480.14
500 Other Purchased Services				
580 Travel	8,700.46	2,946.96	682.85	12,330.27
599 Other Miscellaneous Purchased Services	528.75			528.75
Total Other Purchased Services	\$9,229.21	\$2,946.96	\$682.85	\$12,859.02
600 Supplies				
610 General Supplies	23.70	59.45		83.15
630 Food	2,212.24	1,859.49		4,071.73
Total Supplies	\$2,235.94	\$1,918.94		\$4,154.88
Total 2270 Instructional Staff Professional Development Services	\$84,106.42	\$52,969.44	\$21,446.62	\$158,522.48

LEA : 117596003 Northern Tioga SD

Printed 11/20/2018 1:01:55 PM

Page - 12 of 36

General Fund (10)

2300 Support Services – Administration

100 Personnel Services – Salaries

100 Personnel Services – Salaries

Total Personnel Services – Salaries

200 Personnel Services – Employee Benefits

210 Group Insurance – Contracted Provider

220 Social Security Contributions

230 PSERS Retirement Contributions

250 Unemployment Compensation

260 Workers' Compensation

299 All Other Employee Benefits

Total Personnel Services – Employee Benefits

300 Purchased Professional and Technical Services

310 Official / Administrative Services

330 Other Professional Services

340 Technical Services

Total Purchased Professional and Technical Services

400 Purchased Property Services

430 Repairs and Maintenance Services

440 Rentals

Total Purchased Property Services

500 Other Purchased Services

520 Insurance – General

530 Communications

549 Other Advertising/Public Relations

550 Printing and Binding

580 Travel

Total Other Purchased Services

600 Supplies

610 General Supplies

630 Food

640 Books and Periodicals

650 Supplies & Fees – Technology Related

Total Supplies

800 Other Objects

810 Dues and Fees

890 Miscellaneous Expenditures

Total Other Objects

Total 2300 Support Services – Administration

	Elementary	Secondary	Federal	Total
100 Personnel Services – Salaries	383,739.88	360,390.08		935,350.51
Total Personnel Services – Salaries	\$383,739.88	\$360,390.08		\$935,350.51
200 Personnel Services – Employee Benefits				
210 Group Insurance – Contracted Provider	94,007.55	54,220.96		186,796.20
220 Social Security Contributions	28,654.46	26,923.71		69,389.24
230 PSERS Retirement Contributions	125,520.39	118,077.09		306,255.39
250 Unemployment Compensation	52.56	39.24		110.34
260 Workers' Compensation	1,981.54	1,860.95		4,830.00
299 All Other Employee Benefits				7,729.80
Total Personnel Services – Employee Benefits	\$250,216.50	\$201,121.95		\$575,110.97
300 Purchased Professional and Technical Services				
310 Official / Administrative Services				24,466.09
330 Other Professional Services				41,486.94
340 Technical Services				46,858.56
Total Purchased Professional and Technical Services				\$112,811.59
400 Purchased Property Services				
430 Repairs and Maintenance Services	530.56	567.74		1,098.30
440 Rentals	17,239.75	15,196.49		37,001.62
Total Purchased Property Services	\$17,770.31	\$15,764.23		\$38,099.92
500 Other Purchased Services				
520 Insurance – General				15,999.49
530 Communications	20,291.02	18,651.90		47,607.49
549 Other Advertising/Public Relations				22,741.38
550 Printing and Binding				28,804.04
580 Travel	2,608.75	4,419.41		11,408.31
Total Other Purchased Services	\$22,899.77	\$23,071.31		\$126,560.71
600 Supplies				
610 General Supplies	3,520.48	712.47		6,764.19
630 Food	118.95	1,023.45		2,849.87
640 Books and Periodicals				522.46
650 Supplies & Fees – Technology Related	157.32	1,274.99		2,396.31
Total Supplies	\$3,796.75	\$3,010.91		\$12,532.83
800 Other Objects				
810 Dues and Fees	1,348.00	1,020.00		18,924.47
890 Miscellaneous Expenditures	1,909.67	2,842.00		4,751.67
Total Other Objects	\$3,257.67	\$3,862.00		\$23,676.14
Total 2300 Support Services – Administration	\$681,680.88	\$607,220.48		\$1,824,142.67

General Fund (10)			
	Elementary	Secondary	Federal
			Total
2310 Board Services			
200 Personnel Services – Employee Benefits			
210 Group Insurance – Contracted Provider			34.00
299 All Other Employee Benefits			7,729.80
Total Personnel Services – Employee Benefits			\$7,763.80
300 Purchased Professional and Technical Services			
330 Other Professional Services			16,297.00
Total Purchased Professional and Technical Services			\$16,297.00
400 Purchased Property Services			
440 Rentals			2,282.69
Total Purchased Property Services			\$2,282.69
500 Other Purchased Services			
520 Insurance – General			15,032.00
530 Communications			2,274.00
549 Other Advertising/Public Relations			22,741.38
550 Printing and Binding			28,804.04
580 Travel			1,134.98
Total Other Purchased Services			\$69,986.40
600 Supplies			
610 General Supplies			928.52
630 Food			597.31
Total Supplies			\$1,525.83
800 Other Objects			
810 Dues and Fees			11,439.97
Total Other Objects			\$11,439.97
Total 2310 Board Services			\$109,295.69

General Fund (10)

2330 Tax Assessment and Collection Services

Elementary

Secondary

Federal

Total

300 Purchased Professional and Technical Services

310 Official / Administrative Services

340 Technical Services

Total Purchased Professional and Technical Services

12,131.83
46,858.56
\$58,990.39

500 Other Purchased Services

520 Insurance – General

530 Communications

Total Other Purchased Services

967.49
6,390.57
\$7,358.06

600 Supplies

610 General Supplies

Total Supplies

205.31
\$205.31

Total 2330 Tax Assessment and Collection Services

\$66,553.76

General Fund (10)				
2350 Legal and Accounting Services	Elementary	Secondary	Federal	Total
300 Purchased Professional and Technical Services				
330 Other Professional Services				25,189.94
Total Purchased Professional and Technical Services				\$25,189.94
Total 2350 Legal and Accounting Services				\$25,189.94

General Fund (10)				
2360 Office of the Superintendent / Executive Director Services				
100 Personnel Services – Salaries				
100 Personnel Services – Salaries				191,220.55
Total Personnel Services – Salaries				\$191,220.55
200 Personnel Services – Employee Benefits				
210 Group Insurance – Contracted Provider				38,533.69
220 Social Security Contributions				13,811.07
230 PSERS Retirement Contributions				62,657.91
250 Unemployment Compensation				18.54
260 Workers' Compensation				987.51
Total Personnel Services – Employee Benefits				\$116,008.72
400 Purchased Property Services				
440 Rentals				2,282.69
Total Purchased Property Services				\$2,282.69
500 Other Purchased Services				
530 Communications	1,951.14	1,951.13		3,902.27
580 Travel				3,245.17
Total Other Purchased Services	\$1,951.14	\$1,951.13		\$7,147.44
600 Supplies				
610 General Supplies				1,397.41
630 Food				1,110.16
640 Books and Periodicals				522.46
650 Supplies & Fees – Technology Related				964.00
Total Supplies				\$3,994.03
800 Other Objects				
810 Dues and Fees				5,116.50
Total Other Objects				\$5,116.50
Total 2360 Office of the Superintendent / Executive Director Services	\$1,951.14	\$1,951.13		\$325,769.93

General Fund (10)

2380 Office of the Principal Services

100 Personnel Services – Salaries

	Elementary	Secondary	Federal	Total
100 Personnel Services – Salaries	383,739.88	360,390.08		744,129.96
Total Personnel Services – Salaries	\$383,739.88	\$360,390.08		\$744,129.96

200 Personnel Services – Employee Benefits

210 Group Insurance – Contracted Provider	94,007.55	54,220.96		148,228.51
220 Social Security Contributions	28,654.46	26,923.71		55,578.17
230 PSERS Retirement Contributions	125,520.39	118,077.09		243,597.48
250 Unemployment Compensation	52.56	39.24		91.80
260 Workers' Compensation	1,981.54	1,860.95		3,842.49

Total Personnel Services – Employee Benefits

	\$250,216.50	\$201,121.95		\$451,338.45
--	---------------------	---------------------	--	---------------------

400 Purchased Property Services

430 Repairs and Maintenance Services	530.56	567.74		1,098.30
440 Rentals	17,239.75	15,196.49		32,436.24

Total Purchased Property Services

	\$17,770.31	\$15,764.23		\$33,534.54
--	--------------------	--------------------	--	--------------------

500 Other Purchased Services

530 Communications	18,339.88	16,700.77		35,040.65
580 Travel	2,608.75	4,419.41		7,028.16

Total Other Purchased Services

	\$20,948.63	\$21,120.18		\$42,068.81
--	--------------------	--------------------	--	--------------------

600 Supplies

610 General Supplies	3,520.48	712.47		4,232.95
630 Food	118.95	1,023.45		1,142.40
650 Supplies & Fees – Technology Related	157.32	1,274.99		1,432.31

Total Supplies

	\$3,796.75	\$3,010.91		\$6,807.66
--	-------------------	-------------------	--	-------------------

800 Other Objects

810 Dues and Fees	1,348.00	1,020.00		2,368.00
890 Miscellaneous Expenditures	1,909.67	2,842.00		4,751.67

Total Other Objects

	\$3,257.67	\$3,862.00		\$7,119.67
--	-------------------	-------------------	--	-------------------

Total 2380 Office of the Principal Services

	\$679,729.74	\$605,269.35		\$1,284,999.09
--	---------------------	---------------------	--	-----------------------

General Fund (10)				
2390 Other Administration Services				
300 Purchased Professional and Technical Services				
310 Official / Administrative Services				12,334.26
Total Purchased Professional and Technical Services				\$12,334.26
Total 2390 Other Administration Services				\$12,334.26

General Fund (10)				
2400 Support Services – Pupil Health	Elementary	Secondary	Federal	Total
100 Personnel Services – Salaries				159,843.56
100 Personnel Services – Salaries				\$159,843.56
Total Personnel Services – Salaries				
200 Personnel Services – Employee Benefits				75,660.98
210 Group Insurance – Contracted Provider				11,818.70
220 Social Security Contributions				51,411.20
230 PSERS Retirement Contributions				31.47
250 Unemployment Compensation				876.37
260 Workers' Compensation				100.00
291 Other Retirement Plans				
Total Personnel Services – Employee Benefits				\$139,898.72
300 Purchased Professional and Technical Services				1,599.00
330 Other Professional Services				
Total Purchased Professional and Technical Services				\$1,599.00
400 Purchased Property Services				247.00
430 Repairs and Maintenance Services				
Total Purchased Property Services				\$247.00
500 Other Purchased Services				52.17
580 Travel				
Total Other Purchased Services				\$52.17
600 Supplies				8,460.58
610 General Supplies				269.93
650 Supplies & Fees – Technology Related				
Total Supplies				\$8,730.51
Total 2400 Support Services – Pupil Health				\$310,370.96

General Fund (10)					
2440 Nursing Services		Elementary	Secondary	Federal	Total
100	Personnel Services – Salaries				
100	Personnel Services – Salaries				159,843.56
Total Personnel Services – Salaries					\$159,843.56
200	Personnel Services – Employee Benefits				
210	Group Insurance – Contracted Provider				75,660.98
220	Social Security Contributions				11,818.70
230	PSERS Retirement Contributions				51,411.20
250	Unemployment Compensation				31.47
260	Workers' Compensation				876.37
291	Other Retirement Plans				100.00
Total Personnel Services – Employee Benefits					\$139,898.72
300	Purchased Professional and Technical Services				
330	Other Professional Services				1,599.00
Total Purchased Professional and Technical Services					\$1,599.00
400	Purchased Property Services				
430	Repairs and Maintenance Services				247.00
Total Purchased Property Services					\$247.00
500	Other Purchased Services				
580	Travel				52.17
Total Other Purchased Services					\$52.17
600	Supplies				
610	General Supplies				8,460.58
650	Supplies & Fees – Technology Related				269.93
Total Supplies					\$8,730.51
Total 2440 Nursing Services					\$310,370.96

		Elementary	Secondary	Federal	Total
General Fund (10)					
2500 Support Services – Business					
100 Personnel Services – Salaries					
100 Personnel Services – Salaries					231,220.04
Total Personnel Services – Salaries					\$231,220.04
200 Personnel Services – Employee Benefits					
210 Group Insurance – Contracted Provider					55,920.68
220 Social Security Contributions					17,403.05
230 PSERS Retirement Contributions					74,960.22
250 Unemployment Compensation					31.69
260 Workers' Compensation					1,193.99
Total Personnel Services – Employee Benefits					\$149,509.63
400 Purchased Property Services					
440 Rentals					1,940.10
Total Purchased Property Services					\$1,940.10
500 Other Purchased Services					
520 Insurance – General					350.00
530 Communications					5,855.05
580 Travel					1,756.46
Total Other Purchased Services					\$7,961.51
600 Supplies					
610 General Supplies					7,260.11
640 Books and Periodicals					85.00
650 Supplies & Fees – Technology Related					2,362.52
Total Supplies					\$9,707.63
800 Other Objects					
810 Dues and Fees					264.00
Total Other Objects					\$264.00
Total 2500 Support Services – Business					\$400,602.91

General Fund (10)				
2510 Fiscal Services				
	Elementary	Secondary	Federal	Total
100 <u>Personnel Services – Salaries</u>				
100 Personnel Services – Salaries				152,720.82
Total Personnel Services – Salaries				\$152,720.82
200 <u>Personnel Services – Employee Benefits</u>				
210 Group Insurance – Contracted Provider				38,030.61
220 Social Security Contributions				11,510.29
230 PSERS Retirement Contributions				49,986.63
250 Unemployment Compensation				14.56
260 Workers' Compensation				788.58
Total Personnel Services – Employee Benefits				\$100,330.67
500 <u>Other Purchased Services</u>				
520 Insurance – General				350.00
530 Communications				958.80
580 Travel				1,756.46
Total Other Purchased Services				\$3,065.26
600 <u>Supplies</u>				
610 General Supplies				2,569.53
640 Books and Periodicals				85.00
650 Supplies & Fees – Technology Related				1,597.12
Total Supplies				\$4,251.65
800 <u>Other Objects</u>				
810 Dues and Fees				264.00
Total Other Objects				\$264.00
Total 2510 Fiscal Services				\$260,632.40

General Fund (10)				
2511 Supervision of Fiscal Services - Head of Component				Total
	Elementary	Secondary	Federal	
100 Personnel Services – Salaries				117,846.32
100 Personnel Services – Salaries				\$117,846.32
Total Personnel Services – Salaries				
200 Personnel Services – Employee Benefits				19,186.83
210 Group Insurance – Contracted Provider				8,874.77
220 Social Security Contributions				38,538.42
230 PSERS Retirement Contributions				7.28
250 Unemployment Compensation				608.46
260 Workers' Compensation				
Total Personnel Services – Employee Benefits \$67,215.76				
500 Other Purchased Services				350.00
520 Insurance – General				958.80
530 Communications				1,756.46
580 Travel				
Total Other Purchased Services \$3,065.26				
600 Supplies				426.95
610 General Supplies				85.00
640 Books and Periodicals				1,597.12
650 Supplies & Fees – Technology Related				
Total Supplies \$2,109.07				
800 Other Objects				264.00
810 Dues and Fees				
Total Other Objects \$264.00				
Total 2511 Supervision of Fiscal Services - Head of Component \$190,500.41				

General Fund (10)

2514 Payroll Services

Elementary

Secondary

Federal

Total

100 Personnel Services - Salaries

100 Personnel Services - Salaries

34,874.50

Total Personnel Services - Salaries

\$34,874.50

200 Personnel Services - Employee Benefits

210 Group Insurance - Contracted Provider

18,843.78

220 Social Security Contributions

2,635.52

230 PSERS Retirement Contributions

11,448.21

250 Unemployment Compensation

7.28

260 Workers' Compensation

180.12

Total Personnel Services - Employee Benefits

\$33,114.91

600 Supplies

610 General Supplies

2,142.58

Total Supplies

\$2,142.58

Total 2514 Payroll Services

\$70,131.99

General Fund (10)			
	Elementary	Secondary	Federal
			Total
2590 Other Support Services – Business			
100 <u>Personnel Services – Salaries</u>			78,499.22
100 Personnel Services – Salaries			\$78,499.22
Total Personnel Services – Salaries			
200 <u>Personnel Services – Employee Benefits</u>			17,890.07
210 Group Insurance – Contracted Provider			5,892.76
220 Social Security Contributions			24,973.59
230 PSERS Retirement Contributions			17.13
250 Unemployment Compensation			405.41
260 Workers' Compensation			
Total Personnel Services – Employee Benefits			\$49,178.96
400 Purchased Property Services			1,940.10
440 Rentals			\$1,940.10
Total Purchased Property Services			
500 <u>Other Purchased Services</u>			4,896.25
530 Communications			\$4,896.25
Total Other Purchased Services			
600 <u>Supplies</u>			4,690.58
610 General Supplies			765.40
650 Supplies & Fees – Technology Related			\$5,455.98
Total Supplies			\$139,970.51
Total 2590 Other Support Services – Business			

General Fund (10)				
2600 Operation and Maintenance of Plant Services		<u>Elementary</u>	<u>Secondary</u>	<u>Federal</u>
100 <u>Personnel Services – Salaries</u>				<u>Total</u>
100 Personnel Services – Salaries				718,809.94
Total Personnel Services – Salaries				\$718,809.94
200 <u>Personnel Services – Employee Benefits</u>				
210 Group Insurance – Contracted Provider				259,029.38
220 Social Security Contributions				53,854.52
230 PSERS Retirement Contributions				235,294.82
250 Unemployment Compensation				177.09
260 Workers' Compensation				3,715.92
Total Personnel Services – Employee Benefits				\$552,071.73
300 <u>Purchased Professional and Technical Services</u>				
330 Other Professional Services				31,164.74
Total Purchased Professional and Technical Services				\$31,164.74
400 <u>Purchased Property Services</u>				
410 Cleaning Services				40,725.86
420 Utility Services				101,712.47
430 Repairs and Maintenance Services				148,478.38
Total Purchased Property Services				\$290,916.71
500 <u>Other Purchased Services</u>				
523 General Property and Liability Insurance				140,764.28
530 Communications				831.74
580 Travel				271.38
Total Other Purchased Services				\$141,867.40
600 <u>Supplies</u>				
610 General Supplies		68,448.07	54,935.18	123,383.25
620 Energy				408,232.00
650 Supplies & Fees – Technology Related				160.99
Total Supplies		\$68,448.07	\$54,935.18	\$631,776.24
700 <u>Property</u>				
752 Capital Equipment – Original and Additional				18,915.35
762 Capitalized Equipment - Replacement				43,305.94
Total Property				\$62,221.29
800 <u>Other Objects</u>				
810 Dues and Fees				346.50
Total Other Objects				\$346.50
Total 2600 Operation and Maintenance of Plant Services		\$68,448.07	\$54,935.18	\$2,329,174.55

General Fund (10)					
		Elementary	Secondary	Federal	Total
2620 Operation of Buildings Services					
100 Personnel Services – Salaries					572,951.92
100 Personnel Services – Salaries					\$572,951.92
Total Personnel Services – Salaries					
200 Personnel Services – Employee Benefits					
210 Group Insurance – Contracted Provider					216,118.76
220 Social Security Contributions					42,931.70
230 PSERS Retirement Contributions					187,476.26
250 Unemployment Compensation					151,06
260 Workers' Compensation					2,962.21
Total Personnel Services – Employee Benefits					\$449,639.99
400 Purchased Property Services					
410 Cleaning Services					32,943.36
430 Repairs and Maintenance Services					4,388.18
Total Purchased Property Services					\$37,331.54
500 Other Purchased Services					
523 General Property and Liability Insurance					140,764.28
580 Travel					82.63
Total Other Purchased Services					\$140,846.91
600 Supplies					
610 General Supplies					53,940.68
Total Supplies					\$53,940.68
700 Property					
752 Capital Equipment – Original and Additional					4,154.35
762 Capitalized Equipment - Replacement					14,958.38
Total Property					\$19,112.73
Total 2620 Operation of Buildings Services		\$32,381.60	\$21,559.08		\$1,273,823.77

General Fund (10)

2690 Other Operation and Maintenance of Plant Services

ElementarySecondaryFederalTotal100 Personnel Services – Salaries

100 Personnel Services – Salaries

145,858.02

Total Personnel Services – Salaries\$145,858.02200 Personnel Services – Employee Benefits

210 Group Insurance – Contracted Provider

42,910.62

220 Social Security Contributions

10,922.82

230 PSERS Retirement Contributions

47,818.56

250 Unemployment Compensation

26.03

260 Workers' Compensation

753.71

Total Personnel Services – Employee Benefits\$102,431.74300 Purchased Professional and Technical Services

330 Other Professional Services

31,164.74

Total Purchased Professional and Technical Services\$31,164.74400 Purchased Property Services

410 Cleaning Services

7,782.50

420 Utility Services

101,712.47

430 Repairs and Maintenance Services

144,090.20

Total Purchased Property Services\$253,585.17500 Other Purchased Services

530 Communications

831.74

580 Travel

188.75

Total Other Purchased Services\$1,020.49600 Supplies

610 General Supplies

36,066.47

33,376.10

69,442.57

620 Energy

408,232.00

650 Supplies & Fees – Technology Related

160.99

Total Supplies\$36,066.47\$33,376.10\$477,835.56700 Property

752 Capital Equipment – Original and Additional

14,761.00

762 Capitalized Equipment - Replacement

28,347.56

Total Property\$43,108.56800 Other Objects

810 Dues and Fees

346.50

Total Other Objects\$36,066.47\$33,376.10\$1,055,350.78Total 2690 Other Operation and Maintenance of Plant Services

General Fund (10)				
	Elementary	Secondary	Federal	Total
2700 Student Transportation Services				
300 Purchased Professional and Technical Services				
340 Technical Services				1,735.20
Total Purchased Professional and Technical Services				\$1,735.20
400 Purchased Property Services				
430 Repairs and Maintenance Services				816.63
Total Purchased Property Services				\$816.63
500 Other Purchased Services				
513 Contracted Carriers				1,971,465.79
516 Student Transportation Services From the IU				17,318.51
530 Communications				3,720.00
Total Other Purchased Services				\$1,992,504.30
600 Supplies				
610 General Supplies				1,335.42
650 Supplies & Fees – Technology Related				2,194.50
Total Supplies				\$3,529.92
Total 2700 Student Transportation Services				\$1,998,586.05

General Fund (10)				
2750 Nonpublic Transportation				
500 Other Purchased Services		<u>Elementary</u>	<u>Secondary</u>	<u>Federal</u>
513 Contracted Carriers				
	109,430.07			
Total Other Purchased Services	\$109,430.07			
Total 2750 Nonpublic Transportation	\$109,430.07			

General Fund (10)			
	Elementary	Secondary	Federal
			Total
2790 Other Student Transportation Services			
300 Purchased Professional and Technical Services			
340 Technical Services			1,735.20
Total Purchased Professional and Technical Services			\$1,735.20
400 Purchased Property Services			
430 Repairs and Maintenance Services			816.63
Total Purchased Property Services			\$816.63
500 Other Purchased Services			
513 Contracted Carriers			1,862,035.72
516 Student Transportation Services From the IU			17,318.51
530 Communications			3,720.00
Total Other Purchased Services			\$1,883,074.23
600 Supplies			
610 General Supplies			1,335.42
650 Supplies & Fees – Technology Related			2,194.50
Total Supplies			\$3,529.92
Total 2790 Other Student Transportation Services			\$1,889,155.98

LEA : 117596003 Northern Tioga SD

Printed 11/20/2018 1:01:55 PM

Page - 32 of 36

General Fund (10)

2800 Support Services – Central

ElementarySecondaryFederalTotal

200 Personnel Services – Employee Benefits

240 Tuition Reimbursement

5,847.00

Total Personnel Services – Employee Benefits

\$5,847.00

300 Purchased Professional and Technical Services

324 Professional Educational Services – Employee Training and Development Services

147.06

11,611.16

340 Technical Services

493.09

Total Purchased Professional and Technical Services

\$147.06\$12,104.25

500 Other Purchased Services

580 Travel

10,309.62

Total Other Purchased Services

\$10,309.62

600 Supplies

660 Supplies & Fees – Technology Related

45,401.18

Total Supplies

\$45,401.18

Total 2800 Support Services – Central

\$147.06\$73,662.05

General Fund (10)				
	Elementary	Secondary	Federal	Total
2830 Staff Services				
200 Personnel Services – Employee Benefits				
240 Tuition Reimbursement				5,847.00
Total Personnel Services – Employee Benefits				\$5,847.00
300 Purchased Professional and Technical Services				
324 Professional Educational Services – Employee Training and Development Services			147.06	11,611.16
Total Purchased Professional and Technical Services			\$147.06	\$11,611.16
500 Other Purchased Services				
580 Travel				10,309.62
Total Other Purchased Services				\$10,309.62
Total 2830 Staff Services			\$147.06	\$27,767.78

General Fund (10)

2834 Staff Development Services – Non-Instructional, Certified Staff Only

Elementary

Secondary

Federal

Total

200 Personnel Services – Employee Benefits

240 Tuition Reimbursement

5,847.00

Total Personnel Services – Employee Benefits

\$5,847.00

300 Purchased Professional and Technical Services

324 Professional Educational Services – Employee Training and Development Services

147.06

9,174.61

Total Purchased Professional and Technical Services

\$147.06

\$9,174.61

500 Other Purchased Services

580 Travel

6,392.60

Total Other Purchased Services

\$147.06

\$6,392.60

Total 2834 Staff Development Services – Non-Instructional, Certified Staff Only

\$147.06

\$21,414.21

General Fund (10)				
2836 Staff Development Services – Non-Instructional, Non-Certified Staff Only				
300 <u>Purchased Professional and Technical Services</u>				
324 Professional Educational Services – Employee Training and Development Services				
Total Purchased Professional and Technical Services				2,436.55
500 <u>Other Purchased Services</u>				
580 Travel				3,917.02
Total Other Purchased Services				\$3,917.02
Total 2836 Staff Development Services – Non-Instructional, Non-Certified Staff Only				\$6,353.57

General Fund (10)

2840 Data Processing Services

Elementary

Secondary

Federal

Total

300 Purchased Professional and Technical Services

340 Technical Services

493.09

Total Purchased Professional and Technical Services

\$493.09

600 Supplies

650 Supplies & Fees – Technology Related

45,401.18

Total Supplies

\$45,401.18

Total 2840 Data Processing Services

\$45,894.27

General Fund (10)	
3000 Operation of Non-Instructional Services	
100 Personnel Services – Salaries	
100 Personnel Services – Salaries	281,037.07
Total Personnel Services – Salaries	\$281,037.07
200 Personnel Services – Employee Benefits	
220 Social Security Contributions	21,406.93
230 PSERS Retirement Contributions	70,173.46
250 Unemployment Compensation	1,378.70
260 Workers' Compensation	1,545.93
Total Personnel Services – Employee Benefits	\$94,505.02
300 Purchased Professional and Technical Services	
324 Professional Educational Services – Employee Training and Development Services	625.00
330 Other Professional Services	23,000.00
390 Other Purchased Professional and Technical Services	40,675.00
Total Purchased Professional and Technical Services	\$64,300.00
400 Purchased Property Services	
430 Repairs and Maintenance Services	1,065.98
Total Purchased Property Services	\$1,065.98
500 Other Purchased Services	
510 Student Transportation Services	103,851.11
530 Communications	350.00
580 Travel	3,390.68
Total Other Purchased Services	\$107,591.79
600 Supplies	
610 General Supplies	91,321.05
Total Supplies	\$91,321.05
700 Property	
752 Capital Equipment – Original and Additional	10,402.00
Total Property	\$10,402.00
800 Other Objects	
810 Dues and Fees	4,443.25
Total Other Objects	\$4,443.25
Total 3000 Operation of Non-Instructional Services	\$654,666.16

General Fund (10)		Elementary	Secondary	Federal	Total
3200 Student Activities					
100 Personnel Services – Salaries					
100 Personnel Services – Salaries					274,373.07
Total Personnel Services – Salaries					\$274,373.07
200 Personnel Services – Employee Benefits					
220 Social Security Contributions					20,897.09
230 PSERS Retirement Contributions					67,990.98
250 Unemployment Compensation					1,363.55
260 Workers' Compensation					1,509.37
Total Personnel Services – Employee Benefits					\$91,760.99
300 Purchased Professional and Technical Services					
324 Professional Educational Services – Employee Training and Development Services					625.00
330 Other Professional Services					23,000.00
390 Other Purchased Professional and Technical Services					40,675.00
Total Purchased Professional and Technical Services					\$64,300.00
400 Purchased Property Services					
430 Repairs and Maintenance Services					1,065.98
Total Purchased Property Services					\$1,065.98
500 Other Purchased Services					
510 Student Transportation Services					103,851.11
580 Travel					3,390.68
Total Other Purchased Services					\$107,241.79
600 Supplies					
610 General Supplies					76,748.71
Total Supplies					\$76,748.71
700 Property					
752 Capital Equipment – Original and Additional					10,402.00
Total Property					\$10,402.00
800 Other Objects					
810 Dues and Fees					4,443.25
Total Other Objects					\$4,443.25
Total 3200 Student Activities					\$630,335.79

General Fund (10)			
	Elementary	Secondary	Total
3300 Community Services			
100 Personnel Services – Salaries			
100 Personnel Services – Salaries			6,664.00
Total Personnel Services – Salaries			\$6,664.00
200 Personnel Services – Employee Benefits			
220 Social Security Contributions			509.84
230 PSERS Retirement Contributions			2,182.48
250 Unemployment Compensation			15.15
260 Workers' Compensation			36.56
Total Personnel Services – Employee Benefits			\$2,744.03
500 Other Purchased Services			
530 Communications			350.00
Total Other Purchased Services			\$350.00
600 Supplies			
610 General Supplies			11,261.65
Total Supplies			\$11,261.65
Total 3300 Community Services			\$24,330.37

General Fund (10)

4000 Facilities Acquisition, Construction and Improvement Services

Total

400 Purchased Property Services

430 Repairs and Maintenance Services

17,601.00

Total Purchased Property Services

\$17,601.00

Total 4000 Facilities Acquisition, Construction and Improvement Services

\$17,601.00

General Fund (10)				
4600 Existing Building Improvement Services	<u>Elementary</u>	<u>Secondary</u>	<u>Federal</u>	<u>Total</u>
400 Purchased Property Services				
430 Repairs and Maintenance Services				17,601.00
Total Purchased Property Services				\$17,601.00
Total 4600 Existing Building Improvement Services				\$17,601.00

General Fund (10)

5000 Other Expenditures and Financing Uses

800 Other Objects

Total

830 Interest

561,173.12

Total Other Objects

\$561,173.12

900 Other Uses of Funds

910 Redemption of Principal

1,164,000.00

930 Fund Transfers

18,282.09

932 Capital Reserve Fund Transfers Applicable To Fund 32

500,000.00

Total Other Uses of Funds

\$1,682,282.09

Total 5000 Other Expenditures and Financing Uses

\$2,243,455.21

General Fund (10)				
5100 Debt Service / Other Expenditures and Financing Uses				
800 <u>Other Objects</u>				
830 Interest				
Total Other Objects				
900 <u>Other Uses of Funds</u>				
910 Redemption of Principal				
Total Other Uses of Funds				
Total 5100 Debt Service / Other Expenditures and Financing Uses				

		<u>Elementary</u>	<u>Secondary</u>	<u>Federal</u>	<u>Total</u>
General Fund (10)					
5110 Debt Service					
800 Other Objects					
830 Interest					561,173.12
Total Other Objects					\$561,173.12
900 Other Uses of Funds					
910 Redemption of Principal					1,164,000.00
Total Other Uses of Funds					\$1,164,000.00
Total 5110 Debt Service					\$1,725,173.12

General Fund (10)				
5200 Interfund Transfers – Out				
<u>900 Other Uses of Funds</u>				
930	Fund Transfers			18,282.09
932	Capital Reserve Fund Transfers Applicable To Fund 32			500,000.00
<u>Total Other Uses of Funds</u>				<u>\$518,282.09</u>
<u>Total 5200 Interfund Transfers – Out</u>				<u>\$518,282.09</u>

General Fund (10)				
5230 Capital Projects Fund Transfers	Elementary	Secondary	Federal	Total
900 Other Uses of Funds				
932 Capital Reserve Fund Transfers Applicable To Fund 32				500,000.00
Total Other Uses of Funds				\$500,000.00
Total 5230 Capital Projects Fund Transfers				\$500,000.00

General Fund (10)				
5250 Enterprise Fund Transfers				
900 Other Uses of Funds				
930 Fund Transfers				
Total Other Uses of Funds				
Total 5250 Enterprise Fund Transfers				

Elementary

Secondary

Federal

Total

18,282.09

\$18,282.09

\$18,282.09

Capital Reserve Fund - \$ 1431 (32)

2000 Support Services

300 Purchased Professional and Technical Services

310 Official / Administrative Services

Total Purchased Professional and Technical Services

Total 2000 Support Services

Total

3,030.50

\$3,030.50

\$3,030.50

Capital Reserve Fund - \$ 1431 (32)				
2300 Support Services – Administration	Elementary	Secondary	Federal	Total
300 Purchased Professional and Technical Services				
310 Official / Administrative Services				3,030.50
Total Purchased Professional and Technical Services				\$3,030.50
Total 2300 Support Services – Administration				\$3,030.50

Capital Reserve Fund - \$ 1431 (32)

2390 Other Administration Services

300 Purchased Professional and Technical Services

310 Official / Administrative Services

Total Purchased Professional and Technical Services

Total 2390 Other Administration Services

	Elementary	Secondary	Federal	Total
				3,030.50
				\$3,030.50
				\$3,030.50

Capital Reserve Fund - \$ 1431 (32)	
4000 Facilities Acquisition, Construction and Improvement Services	
300 Purchased Professional and Technical Services	
330 Other Professional Services	13,922.92
Total Purchased Professional and Technical Services	\$13,922.92
400 Purchased Property Services	
430 Repairs and Maintenance Services	574,522.36
450 Construction Services	25,518.91
Total Purchased Property Services	\$600,041.27
600 Supplies	
610 General Supplies	3,738.32
Total Supplies	\$3,738.32
700 Property	
762 Capitalized Equipment - Replacement	109,227.71
Total Property	\$109,227.71
Total 4000 Facilities Acquisition, Construction and Improvement Services	\$726,930.22

Capital Reserve Fund - \$ 1431 (32)				
4200 Existing Site Improvement Services				
400 Purchased Property Services				
430 Repairs and Maintenance Services				
450 Construction Services				
Total Purchased Property Services				
Total 4200 Existing Site Improvement Services				

Elementary

Secondary

Federal

Total

7,178.36
6,005.18

\$13,183.54
\$13,183.54

Capital Reserve Fund - \$ 1431 (32)				
4600 Existing Building Improvement Services	Elementary	Secondary	Federal	Total
300 Purchased Professional and Technical Services				
330 Other Professional Services				13,922.92
Total Purchased Professional and Technical Services				\$13,922.92
400 Purchased Property Services				
430 Repairs and Maintenance Services				567,344.00
450 Construction Services				19,513.73
Total Purchased Property Services				\$586,857.73
600 Supplies				
610 General Supplies				3,738.32
Total Supplies				\$3,738.32
700 Property				
762 Capitalized Equipment - Replacement				109,227.71
Total Property				\$109,227.71
Total 4600 Existing Building Improvement Services				\$713,746.68

Capital Reserve Fund - \$ 1431 (32)

5000 Other Expenditures and Financing Uses

900 Other Uses of Funds

910 Redemption of Principal

Total Other Uses of Funds

Total 5000 Other Expenditures and Financing Uses

Total

186,000.00

\$186,000.00

\$186,000.00

Capital Reserve Fund - \$ 1431 (32)				
5100 Debt Service / Other Expenditures and Financing Uses				
900 <u>Other Uses of Funds</u>				
910 Redemption of Principal				186,000.00
Total Other Uses of Funds				\$186,000.00
Total 5100 Debt Service / Other Expenditures and Financing Uses				\$186,000.00

Capital Reserve Fund - \$ 1431 (32)				
5110 Debt Service				
900 Other Uses of Funds				
910 Redemption of Principal				186,000.00
Total Other Uses of Funds				\$186,000.00
Total 5110 Debt Service				\$186,000.00

Other Capital Projects Fund (39)

2000 Support Services

Total

300 Purchased Professional and Technical Services

310 Official / Administrative Services

12,369.51

Total Purchased Professional and Technical Services

\$12,369.51

Total 2000 Support Services

\$12,369.51

Other Capital Projects Fund (39)				
	Elementary	Secondary	Federal	Total
2300 Support Services – Administration				
300 Purchased Professional and Technical Services				
310 Official / Administrative Services				12,369.51
Total Purchased Professional and Technical Services				\$12,369.51
Total 2300 Support Services – Administration				\$12,369.51

Other Capital Projects Fund (39)				
2390 Other Administration Services				
300 Purchased Professional and Technical Services				
310 Official / Administrative Services				12,369.51
Total Purchased Professional and Technical Services				\$12,369.51
Total 2390 Other Administration Services				\$12,369.51

Other Capital Projects Fund (39)

4000 Facilities Acquisition, Construction and Improvement Services

Total

300 Purchased Professional and Technical Services

330 Other Professional Services

1,058,269.13

Total Purchased Professional and Technical Services

\$1,058,269.13

400 Purchased Property Services

430 Repairs and Maintenance Services

418,730.00

Total Purchased Property Services

\$418,730.00

Total 4000 Facilities Acquisition, Construction and Improvement Services

\$1,476,999.13

Other Capital Projects Fund (39)

4600 Existing Building Improvement Services

300 Purchased Professional and Technical Services

330 Other Professional Services

Total Purchased Professional and Technical Services

400 Purchased Property Services

430 Repairs and Maintenance Services

Total Purchased Property Services

Total 4600 Existing Building Improvement Services

Elementary

Secondary

Federal

Total

1,058,269.13

\$1,058,269.13

418,730.00

\$418,730.00

\$1,476,999.13

Debt Service Fund (40)

5000 Other Expenditures and Financing Uses

800 Other Objects

830 Interest

Total

87,230.00

Total Other Objects

\$87,230.00

900 Other Uses of Funds

910 Redemption of Principal

939 Other Fund Transfers

990 Miscellaneous Other Uses of Funds

5,125,000.00
20,000,000.00
390,848.00

Total Other Uses of Funds

\$25,515,848.00

Total 5000 Other Expenditures and Financing Uses

\$25,603,078.00

Debt Service Fund (40)					
5100 Debt Service / Other Expenditures and Financing Uses					
800 <u>Other Objects</u>		<u>Elementary</u>	<u>Secondary</u>	<u>Federal</u>	<u>Total</u>
830 Interest					87,230.00
Total Other Objects					\$87,230.00
900 <u>Other Uses of Funds</u>					
910 Redemption of Principal					5,125,000.00
990 Miscellaneous Other Uses of Funds					390,848.00
Total Other Uses of Funds					\$5,515,848.00
Total 5100 Debt Service / Other Expenditures and Financing Uses					\$5,603,078.00

Debt Service Fund (40)				
5110 Debt Service	<u>Elementary</u>	<u>Secondary</u>	<u>Federal</u>	<u>Total</u>
900 Other Uses of Funds				
990 Miscellaneous Other Uses of Funds				390,848.00
Total Other Uses of Funds				\$390,848.00
Total 5110 Debt Service				\$390,848.00

Debt Service Fund (40)				
5120 Debt Service – Refunded Bonds				
800 <u>Other Objects</u>				
830 Interest				87,230.00
Total Other Objects				\$87,230.00
900 <u>Other Uses of Funds</u>				
910 Redemption of Principal				5,125,000.00
Total Other Uses of Funds				\$5,125,000.00
Total 5120 Debt Service – Refunded Bonds				\$5,212,230.00

Debt Service Fund (40)				
5200	Interfund Transfers -- Out			
900	Other Uses of Funds			
939	Other Fund Transfers			
	Total Other Uses of Funds			20,000,000.00
	Total 5200 Interfund Transfers -- Out			\$20,000,000.00
				\$20,000,000.00

Debt Service Fund (40)				
5230 Capital Projects Fund Transfers				
900 <u>Other Uses of Funds</u>				
939 Other Fund Transfers				20,000,000.00
Total Other Uses of Funds				\$20,000,000.00
Total 5230 Capital Projects Fund Transfers				\$20,000,000.00

LEA : 117596003 Northern Tioga SD

Printed 11/20/2018 1:02:11 PM

Page - 1 of 2

	<u>General Fund(10)</u>	<u>Public Purpose Trust(27)</u>	<u>Other Compt Approved (28)</u>	<u>Athletic / Activity(29)</u>	<u>Capital Reserve (690, 1850)(31)</u>
1000 Instruction					
1100 Regular Programs - Elementary / Secondary	14,781,765.09				
1200 Special Programs - Elementary / Secondary	4,858,549.43				
1300 Vocational Education	282,787.16				
1400 Other Instructional Programs - Elementary / Secondary	166,867.09				
1800 Pre-Kindergarten	376,273.13				
Total Instruction	\$20,466,241.90				
2000 Support Services					
2100 Support Services - Students	967,322.17				
2200 Support Services - Instructional Staff	1,462,146.18				
2300 Support Services - Administration	1,824,142.67				
2400 Support Services - Pupil Health	310,370.96				
2500 Support Services - Business	400,602.91				
2600 Operation and Maintenance of Plant Services	2,329,174.55				
2700 Student Transportation Services	1,998,586.05				
2800 Support Services - Central	73,662.05				
Total Support Services	\$9,366,007.54				
3000 Operation of Non-Instructional Services					
3200 Student Activities	630,335.79				
3300 Community Services	24,330.37				
Total Operation of Non-Instructional Services	\$654,666.16				
4000 Facilities Acquisition, Construction and Improvement Services					
4200 Existing Site Improvement Services					
4600 Existing Building Improvement Services	17,601.00				
Total Facilities Acquisition, Construction and Improvement Services	\$17,601.00				
5000 Other Expenditures and Financing Uses					
5100 Debt Service / Other Expenditures and Financing Uses	1,725,173.12				
5200 Interfund Transfers - Out	518,282.09				
Total Other Expenditures and Financing Uses	\$2,243,455.21				
TOTAL ACTUAL EXPENDITURES & OTHER FINANCING USES	\$32,747,971.81				

	<u>Capital Reserve (1431)(32)</u>	<u>Other Capital Projects Fund(39)</u>	<u>Debt Service(40)</u>	<u>Permanent(90)</u>	<u>Total</u>
1000 Instruction					
1100 Regular Programs - Elementary / Secondary					14,781,765.09
1200 Special Programs - Elementary / Secondary					4,858,549.43
1300 Vocational Education					282,787.16
1400 Other Instructional Programs - Elementary / Secondary					166,867.09
1800 Pre-Kindergarten					376,273.13
Total Instruction					\$20,466,241.90
2000 Support Services					
2100 Support Services - Students					967,322.17
2200 Support Services - Instructional Staff					1,462,146.18
2300 Support Services - Administration	3,030.50	12,369.51			1,839,542.68
2400 Support Services - Pupil Health					310,370.96
2500 Support Services - Business					400,602.91
2600 Operation and Maintenance of Plant Services					2,329,174.55
2700 Student Transportation Services					1,998,586.05
2800 Support Services - Central					73,662.05
Total Support Services	\$3,030.50	\$12,369.51			\$9,381,407.55
3000 Operation of Non-Instructional Services					
3200 Student Activities					630,335.79
3300 Community Services					24,330.37
Total Operation of Non-Instructional Services					\$654,666.16
4000 Facilities Acquisition, Construction and Improvement Services					
4200 Existing Site Improvement Services	13,183.54				13,183.54
4600 Existing Building Improvement Services	713,746.68	1,476,999.13			2,208,346.81
Total Facilities Acquisition, Construction and Improvement Services	\$726,930.22	\$1,476,999.13			\$2,221,530.35
5000 Other Expenditures and Financing Uses					
5100 Debt Service / Other Expenditures and Financing Uses	186,000.00		5,603,078.00		7,514,251.12
5200 Interfund Transfers - Out			20,000,000.00		20,518,282.09
Total Other Expenditures and Financing Uses	\$186,000.00		\$25,603,078.00		\$28,032,533.21
TOTAL ACTUAL EXPENDITURES & OTHER FINANCING USES	\$915,960.72	\$1,489,368.64	\$25,603,078.00		\$60,756,379.17

PSERS Salary Data (Salary Data should relate to the General Fund only)

Amount Description	Amount
Total Salary Base for salaries subject to PSERS withholding	14,337,531.44
Total Federally Funded salaries subject to PSERS withholding	778,638.24

Title I Expenditure Data

Amount Description	Amount
Expenditures Funded with Current Title I Funds	452,691.03
Expenditures Funded with Carry over Title I Funds	189,446.49
Total Title I Expenditure Data	\$642,137.52

Benefits for Staff Relative to Collective
Bargaining Agreements

	OBJECT	COVERED	NOT COVERED	TOTAL
10 General Fund	No Self Insurance data to report			
	211 Medical Insurance	3,659,981.63	250,255.15	3,910,236.78
	212 Dental Insurance	154,284.94	10,549.40	164,834.34
	215 Eye Care Insurance			
	216 Prescription Insurance			
	271 Self-Insurance Medical Benefits			
	272 Self-Insurance Dental Benefits			
	275 Self-Insurance Eye Care Benefits			
	276 Self-Insurance Prescription Benefits			
	FUND TOTAL	\$3,814,266.57	\$260,804.55	\$4,075,071.12
60 Enterprise Fund	No Self Insurance data to report			
	211 Medical Insurance	122,520.91	79,093.22	201,614.13
	212 Dental Insurance	3,646.56	2,354.04	6,000.60
	215 Eye Care Insurance			
	216 Prescription Insurance			
	271 Self-Insurance Medical Benefits			
	272 Self-Insurance Dental Benefits			
	275 Self-Insurance Eye Care Benefits			
	276 Self-Insurance Prescription Benefits			
	FUND TOTAL	\$126,167.47	\$81,447.26	\$207,614.73
60 Internal Service Fund	No Self Insurance data to report			
	211 Medical Insurance			
	212 Dental Insurance			
	215 Eye Care Insurance			
	216 Prescription Insurance			
	271 Self-Insurance Medical Benefits			
	272 Self-Insurance Dental Benefits			
	275 Self-Insurance Eye Care Benefits			
	276 Self-Insurance Prescription Benefits			
	FUND TOTAL			
Total of All Funds		\$3,940,434.04	\$342,261.81	\$4,282,685.85

Function	Special Education (Prior Year)	Nonspecial Education (Prior Year)	Total (Prior Year)	Special Education (Current Year)	Nonspecial Education (Current Year)	Total (Current Year)
2120 Guidance Services	82,032.33	403,992.08	486,024.41	84,249.91	419,172.15	503,422.06
2140 Psychological Services	110,863.88	8,988.96	119,852.84	165,366.50	13,408.10	178,774.60
2150 Speech Pathology and Audiology Services						
2160 Social Work Services	257,107.33	20,846.54	277,953.87	263,741.10	21,384.41	285,125.51
2260 Instruction and Curriculum Development Services	258,344.98	218,288.15	476,633.13	271,861.45	239,301.36	511,162.81
2350 Legal and Accounting Services	3,594.83	17,703.77	21,298.60	4,215.65	20,974.29	25,189.94
2420 Medical Services						
2440 Nursing Services	45,974.95	226,417.02	272,391.97	51,941.95	258,429.01	310,370.96
2700 Student Transportation Services	312,595.30	1,604,164.09	1,916,759.39	356,419.80	1,642,166.25	1,998,586.05
Total	\$1,070,513.60	\$2,500,400.61	\$3,570,914.21	\$1,197,796.36	\$2,614,835.57	\$3,812,631.93

GOVERNMENTAL FUNDS/ACTIVITIES**(PRINCIPAL AMOUNTS ONLY)**

	Short-Term Borrowing	General Obligation Bonds/Notes	Authority Building Obligations	Other Long-Term Debt	Other Post- Employment Benefits (OPEB)	Compensated Absences	Net Pension Liability	Total
1. Debt at Beginning of Fiscal Year		5,670,000.00			5,051,824.00	247,560.65	54,215,000.00	65,184,384.65
2. Additional Debt Incurred During Year		24,250,000.00			252,428.00	6,285.30	3,955,476.00	28,464,189.30
3. Retirements and Repayments		6,475,000.00			276,053.00	11,569.52	4,188,476.00	10,951,098.52
4. Debt at End of Fiscal Year		23,445,000.00			5,028,199.00	242,276.43	53,982,000.00	82,697,475.43
5. Accreted Interest at End Of Fiscal Year								
6. Total Debt and Accreted Interest		23,445,000.00			5,028,199.00	242,276.43	53,982,000.00	82,697,475.43
7. Current Portion P&I - Due within 1 year		1,749,790.00						1,749,790.00
8. Interest Paid during current fiscal year		648,403.11						648,403.11

PROPRIETARY FUNDS**(PRINCIPAL AMOUNTS ONLY)**

	Short-Term Borrowing	General Obligation Bonds/Notes	Authority Building Obligations	Other Long-Term Debt	Other Post- Employment Benefits (OPEB)	Compensated Absences	Net Pension Liability	Total
1. Debt at Beginning of Fiscal Year								
2. Additional Debt Incurred During Year						7,268.28		7,268.28
3. Retirements and Repayments								
4. Debt at End of Fiscal Year						7,268.28		7,268.28
5. Accreted Interest at End Of Fiscal Year								
6. Total Debt and Accreted Interest						7,268.28		7,268.28
7. Current Portion P&I - Due within 1 year								
8. Interest Paid during current fiscal year								

Total Principal and Interest Payments Made by Your School - All Funds

Function	Fund	Principal (910)	Principal (920)	Interest (830)	Total (Principal +Interest)	Misc Other Uses (990)
5110	10	General Fund	1,164,000.00		1,725,173.12	
5110	20	Special Revenue Funds		561,173.12		
5110	30	Capital Projects Funds	186,000.00		186,000.00	
5110	40	Debt Service Fund				390,848.00
5110	90	Permanent Fund				
5120	10	General Fund				
5120	20	Special Revenue Funds				
5120	30	Capital Projects Funds				
5120	40	Debt Service Fund	5,125,000.00	87,230.00	5,212,230.00	
Total Debt Payments - Governmental Funds		\$6,475,000.00		\$648,403.12	\$7,123,403.12	\$390,848.00
Function	Fund	Principal (910)	Principal (920)	Interest (830)	Total (Principal +Interest)	
5110	50	Enterprise Fund				
5110	60	Internal Service Fund				
5120	50	Enterprise Fund				
5120	60	Internal Service Fund				
Total Debt Payments - Proprietary Funds						

Debt DetailsGovernmental Funds/Activities**Debt Category**

Debt Issue Date (MM/YYYY)	Debt at Beginning of Fiscal Year	Principal Amounts Only			Debt at End of Fiscal Year	Current Portion Due Within One Year (Principal and Interest)		Interest Paid During Fiscal Year
		Additions	Reductions / Repayments					
General Obligation Bonds/Notes – CIB	07/2017	5,290,000.00	435,000.00		4,855,000.00	693,590.00		90,699.78
General Obligation Bonds/Notes – CIB	07/2017	18,960,000.00	370,000.00		18,590,000.00	1,056,200.00		459,573.33
General Obligation Bonds/Notes – CIB	01/2016	5,125,000.00	5,125,000.00					87,230.00
General Obligation Bonds/Notes – CIB	06/2013	545,000.00	545,000.00					10,900.00
Compensated Absences		247,560.65	11,569.52		242,276.43			
Other Post-Employment Benefits (OPEB)		5,051,824.00	276,053.00		5,028,199.00			
Net Pension Liability		54,215,000.00	4,188,476.00		53,982,000.00			

Totals for Debt Entered:

\$65,184,384.65	\$28,464,189.30	\$10,951,098.52	\$82,697,475.43	\$1,749,790.00	\$648,403.11
-----------------	-----------------	-----------------	-----------------	----------------	--------------

Bond Details
Proprietary Funds**Debt Category**

Debt Issue Date (MM/YYYY)	Debt at Beginning of Fiscal Year	Principal Amounts Only			Debt at End of Fiscal Year	Current Portion Due Within One Year (Principal and Interest)		Interest Paid During Fiscal Year
		Additions	Reductions / Repayments					
Compensated Absences		7,268.28			7,268.28			

Totals for Debt Entered:

\$7,268.28							
------------	--	--	--	--	--	--	--

General Fund (10)**Section 1: Tuition/Purchased Services as Reported within Expenditure Detail**

Tuition Reported in General Fund Expenditures 1000-560

Amount
685,573.80

Purchased Services in General Fund Expenditures 1000-594 and 1000-597

Section 1 Total**\$685,573.80****Section 2: Tuition Paid to Institution Types During Fiscal Year**

	Tuition Paid For Nonspecial Education	Tuition Paid For Special Education	Total
1 1306 Institutions			
2 Institutionalized Children's Programs			
3 Juveniles Incarcerated in Adult Facilities			
4 Residential Treatment Facilities	677.52	6,227.28	6,904.80
5 Other Local Education Agencies	42,304.85	9,238.45	51,543.30
6 Brick and Mortar Charter Schools	1,213.52		1,213.52
7 Cyber Charter Schools	293,813.16	180,771.93	474,585.09
8 Career and Technology Centers		23,735.18	23,735.18
9 Approved Private Schools		13,730.48	13,730.48
10 PA Chartered Schools for the Deaf and Blind			
11 Private Residential Rehabilitative Institutions			
12 Juvenile Detention Centers			
13 Special Program Jointures		41,379.00	41,379.00
14 Other Tuition Not Included Elsewhere In This Section	72,482.43		72,482.43
Section 2 Total	\$410,491.48	\$275,082.32	\$685,573.80

Food Service / Cafeteria Operations Fund (51)	
3000 Operation of Non-Instructional Services	
100 <u>Personnel Services – Salaries</u>	
100 Personnel Services – Salaries	486,952.99
Total Personnel Services – Salaries	\$486,952.99
200 <u>Personnel Services – Employee Benefits</u>	
210 Group Insurance – Contracted Provider	208,779.03
220 Social Security Contributions	36,493.03
230 PSERS Retirement Contributions	151,721.12
250 Unemployment Compensation	2,703.65
260 Workers' Compensation	2,678.12
Total Personnel Services – Employee Benefits	\$402,374.95
300 <u>Purchased Professional and Technical Services</u>	
340 Technical Services	2,617.20
Total Purchased Professional and Technical Services	\$2,617.20
400 <u>Purchased Property Services</u>	
430 Repairs and Maintenance Services	24,576.39
Total Purchased Property Services	\$24,576.39
500 <u>Other Purchased Services</u>	
580 Travel	6,463.31
Total Other Purchased Services	\$6,463.31
600 <u>Supplies</u>	
610 General Supplies	23,322.18
630 Food	599,763.89
Total Supplies	\$623,086.07
700 <u>Property</u>	
740 Depreciation	16,191.82
Total Property	\$16,191.82
Total 3000 Operation of Non-Instructional Services	\$1,562,262.73

Food Service / Cafeteria Operations Fund (51)				
3100 Food Services			Elementary	Secondary
100 Personnel Services – Salaries				
100 Personnel Services – Salaries				
Total Personnel Services – Salaries				
200 Personnel Services – Employee Benefits				
210 Group Insurance – Contracted Provider				
220 Social Security Contributions				
230 PSERS Retirement Contributions				
250 Unemployment Compensation				
260 Workers' Compensation				
Total Personnel Services – Employee Benefits				
300 Purchased Professional and Technical Services				
340 Technical Services				
Total Purchased Professional and Technical Services				
400 Purchased Property Services				
430 Repairs and Maintenance Services				
Total Purchased Property Services				
500 Other Purchased Services				
580 Travel				
Total Other Purchased Services				
600 Supplies				
610 General Supplies				
630 Food				
Total Supplies				
700 Property				
740 Depreciation				
Total Property				
Total 3100 Food Services				

	<u>Food Service(51)</u>	<u>Child Care Operations(52)</u>	<u>Other Enterprise(56)</u>	<u>Internal Service(60)</u>	<u>Total</u>
3000 <u>Operation of Non-Instructional Services</u>					
3100 Food Services	1,562,262.73				1,562,262.73
Total Operation of Non-Instructional Services	\$1,562,262.73				\$1,562,262.73
TOTAL ACTUAL EXPENDITURES & OTHER FINANCING USES	\$1,562,262.73				\$1,562,262.73

